



Kingsgate Road, West Hampstead, London, NW6 .| £365

- Garden
- 2 Double Bedrooms
- Close to Tube
- Close to Shops

- Wooden Floors
- Own Entrance
- Available 1st April

"Vita Properties have been tremendously helpful throughout the process of securing/renting my flat. Informative about the property, prompt communication, easy to use dashboard for sharing of information, and pleasant to work with. Highly recommend!"

Ideally located on tree lined Kingsgate Road, this generously sized two bedroomed flat is located on the garden level of a period conversion. This superb property comprises reception room with open plan fitted kitchen, a patio garden, two double bedrooms, bathroom and wooden floors through out. Enviably located just moments from the shops and restaurants in Kilburn & West Hampstead. West Hampstead Underground Station (Jubilee Line), First Connect and West Hampsteads Overland & Kilburn Park Station (bakerloo line) is within easy reach, providing convenient links into and out of central London. Available 1st April and offered furnished.



Oliver Kent

✉ [oliver.kent@vitaproperties.uk](mailto:oliver.kent@vitaproperties.uk)

☎ +4477 7274 0351



- 🏠 Flat
- 🔑 Available to Let
- 🛏 x 2
- 🛋 x 1
- 🚿 x 1

"I was very impressed with Vita and their network of buyers. When the sale of my flat fell through (twice) they worked extremely hard to find new buyers in a difficult market - thank you!"

---





"Working with Vita properties has been a smooth experience! No complaints at all. Our letting agent, Diana has been fantastic and very helpful throughout the whole process. I would highly recommend both Vita properties and Diana."

---



"I used Vita properties to find a flat recently and it was an overall professional, personalised and positive experience. Saira went the extra mile to accommodate to our needs and quick to help us whenever possible."

---

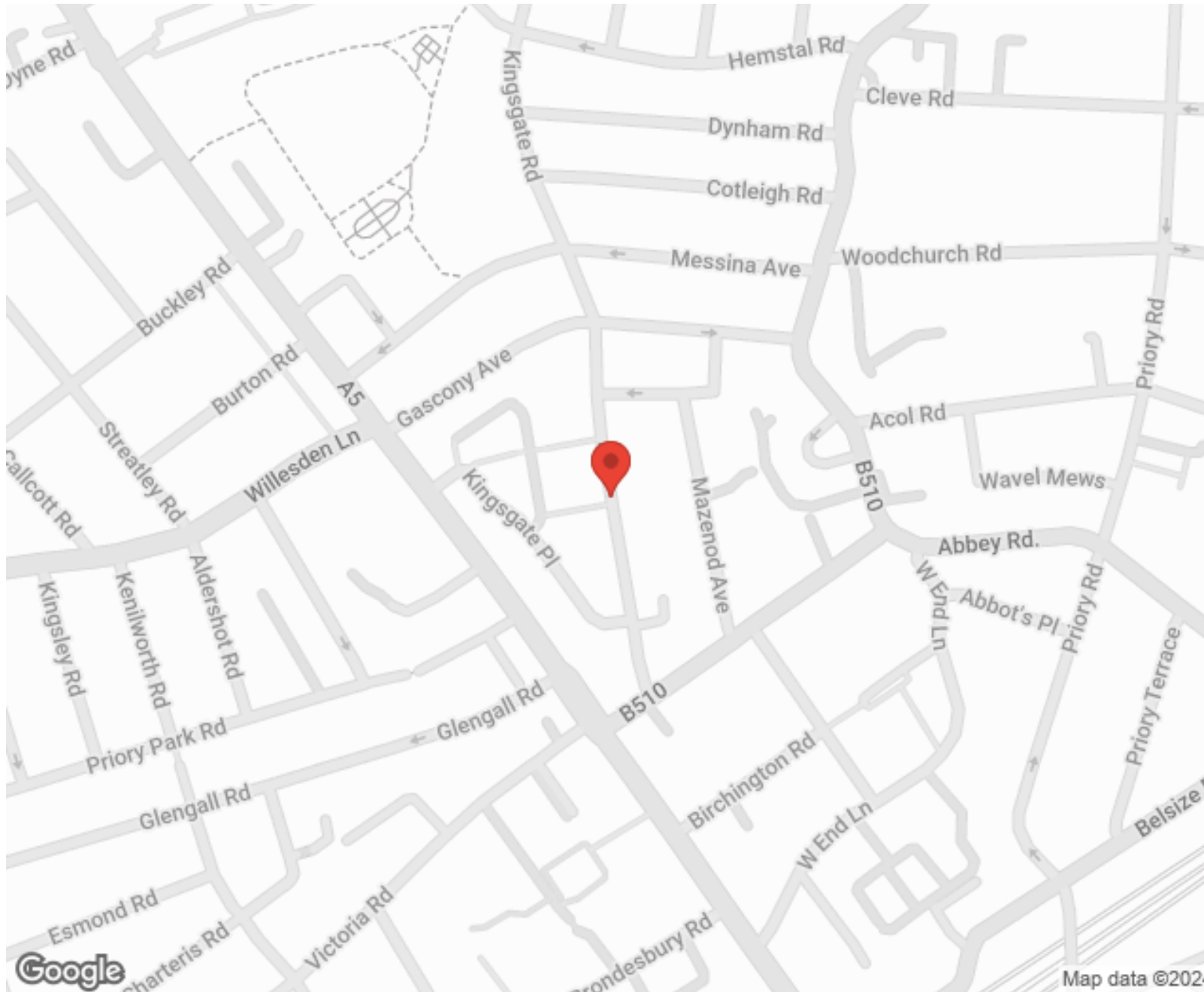


**MORE INFO, PICTURES,  
CONTACT ON  
OUR WEBSITE**



"Vita Properties is a very professional agency. My experience with them was incredible and the entire team was very helpful and kind throughout the renting process. I'd highly recommend!"

---



SCAN FOR MORE  
GOOGLE REVIEWS






Google

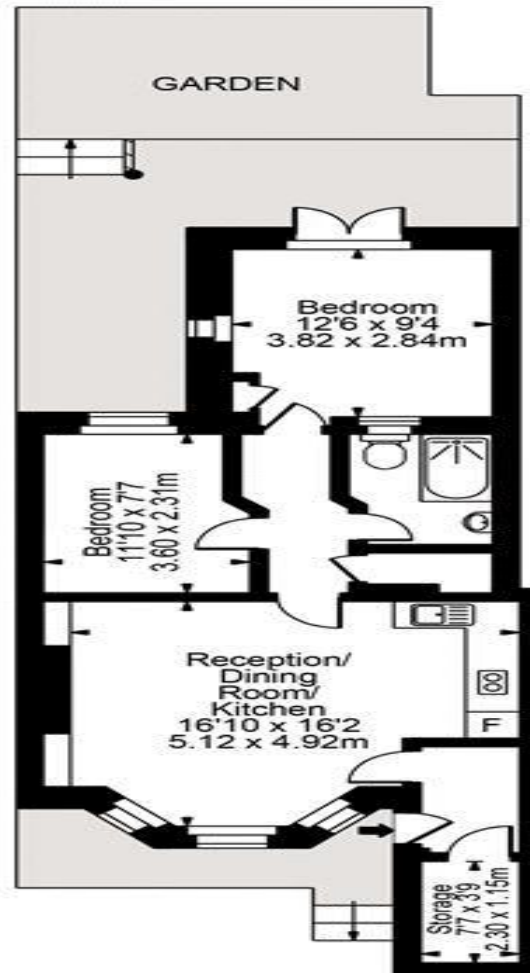


4.9 Stars | 132 Reviews

Find us on social media

-  vitaproperties
-  VitaProperties
-  VitaProperties

# Kingsgate Road



## Lower Ground Floor

Approx Gross Internal Area **643 Sq Ft - 59.72 Sq M**

FOR ILLUSTRATIVE PURPOSES ONLY. NOT TO SCALE.

Whilst every attempt has been made to ensure the accuracy of the floorplan shown, all measurements, positioning, fixtures, fittings and any other data shown are an approximate interpretation for illustrative purposes only and are not to scale. No responsibility is taken for any error, omission, miss-statement or use of data shown.  
Floor plan by [www.bestangle.co.uk](http://www.bestangle.co.uk)