



Fitzjohns Avenue, Hampstead, London, NW3 .| £560

- Two bedroom - Two bathroom
- Split level
- Moments to Swiss Cottage tube
- Modern finish

- Unfurnished
- Available 11 December

"Vita Properties have been tremendously helpful throughout the process of securing/renting my flat. Informative about the property, prompt communication, easy to use dashboard for sharing of information, and pleasant to work with. Highly recommend!"

Available 11 December on an unfurnished basis is this duplex 2 bedroom 2 bathroom apartment set on the first/second floor of a period conversion located on a tree-lined street within 500m to both Finchley Road & Swiss Cottage stations. The property has a modern finish, modern and double glazed throughout.

The flat further benefits from being only minutes away from Hampstead and Belsize Village



Oliver Kent

✉ [oliver.kent@vitaproperties.uk](mailto:oliver.kent@vitaproperties.uk)

☎ +4477 7274 0351

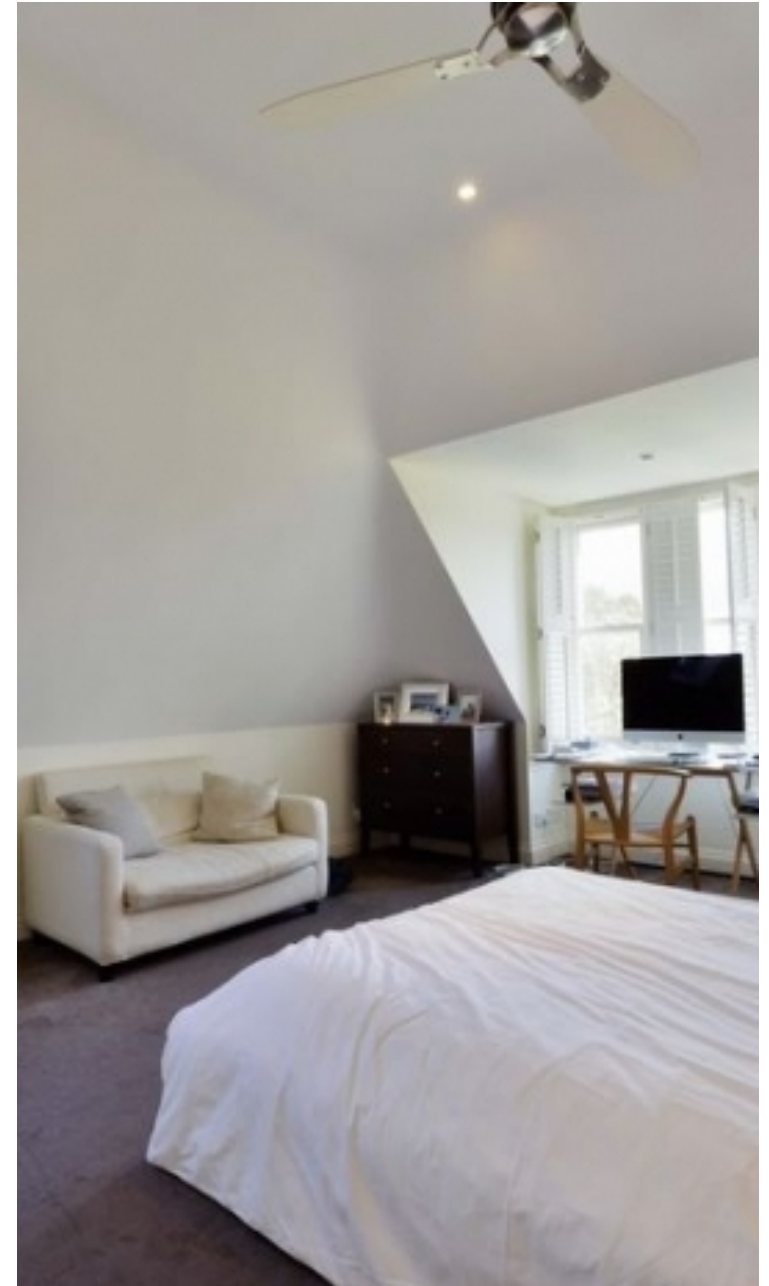


🏠	Flat
🔑	Available to Let
🛏	x 2
🛋	x 1
🚿	x 2



"I was very impressed with Vita and their network of buyers. When the sale of my flat fell through (twice) they worked extremely hard to find new buyers in a difficult market - thank you!"

---



"Working with Vita properties has been a smooth experience! No complaints at all. Our letting agent, Diana has been fantastic and very helpful throughout the whole process. I would highly recommend both Vita properties and Diana."

---



"I used Vita properties to find a flat recently and it was an overall professional, personalised and positive experience. Saira went the extra mile to accommodate to our needs and quick to help us whenever possible."

---

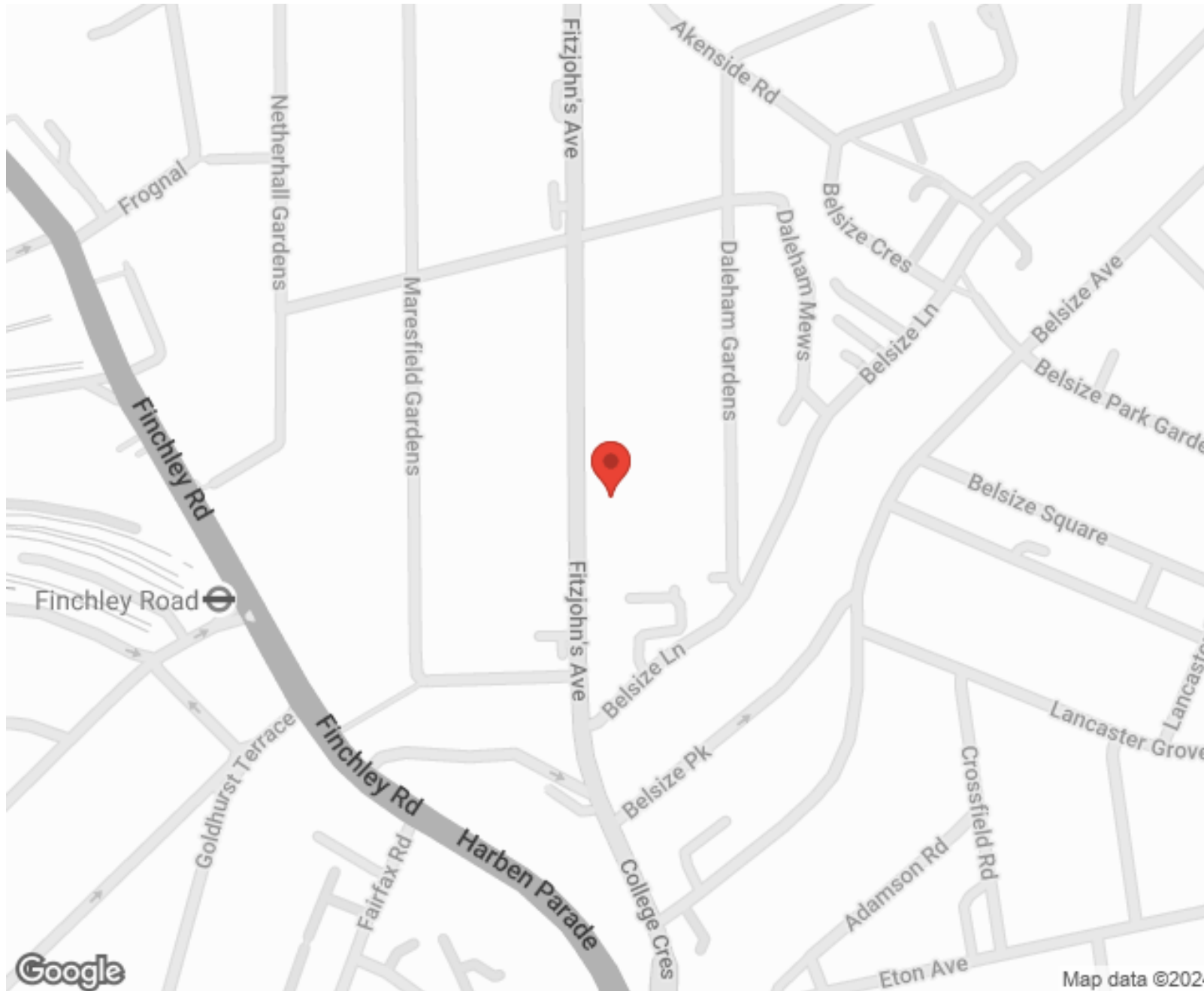


**MORE INFO, PICTURES,  
CONTACT ON  
OUR WEBSITE**



"Vita Properties is a very professional agency. My experience with them was incredible and the entire team was very helpful and kind throughout the renting process. I'd highly recommend!"

---



SCAN FOR MORE  
GOOGLE REVIEWS






Google

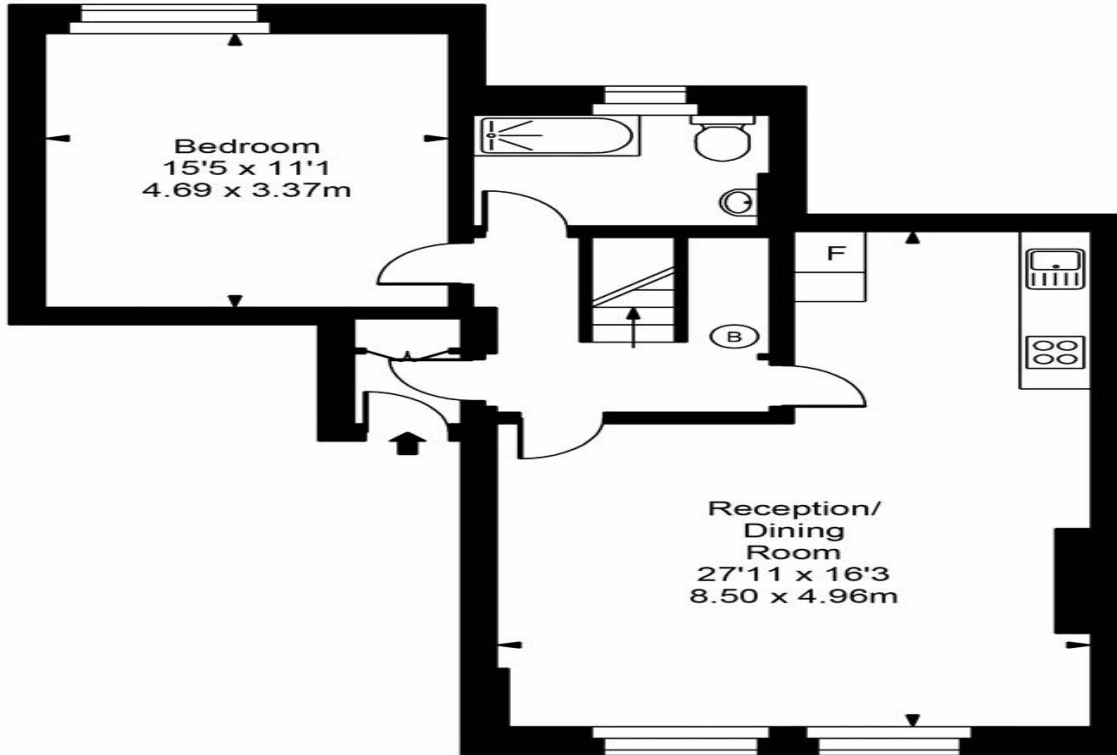
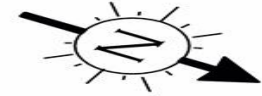


4.9 Stars | 132 Reviews

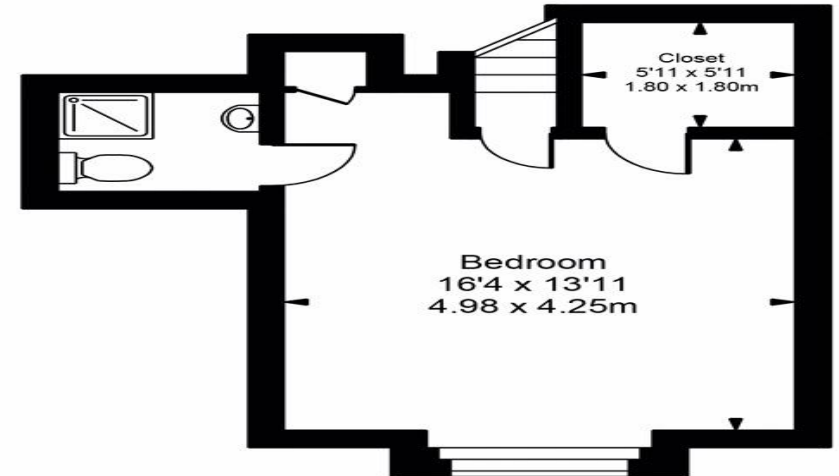
Find us on social media

-  vitaproperties
-  VitaProperties
-  VitaProperties

Fitzjohns Avenue



Ground Floor



Top Floor



Approx Gross Internal Area **1067 Sq Ft - 99.12 Sq M**

For Illustration Purposes Only - Not To Scale  
Floor plan by [www.bestangle.co.uk](http://www.bestangle.co.uk)