



Gloucester Place, Marylebone, London, W1 .| £550

- Newly refurbished
- Bright and spacious
- Well located
- Furnished or unfurnished

- Available 30 October
- Council tax - F - £980 per annum

"Vita Properties have been tremendously helpful throughout the process of securing/renting my flat. Informative about the property, prompt communication, easy to use dashboard for sharing of information, and pleasant to work with. Highly recommend!"

Available 30 October - This beautifully presented, newly refurbished two double bedroom third floor apartment. This bright and spacious apartment benefits a large living room, magnificent high ceilings, a large eat in kitchen, a modern bathroom and lift access. The apartment is a short walk to Baker Street and Marylebone High Street.

Offered furnished or unfurnished



Oliver Kent

✉ oliver.kent@vitaproperties.uk

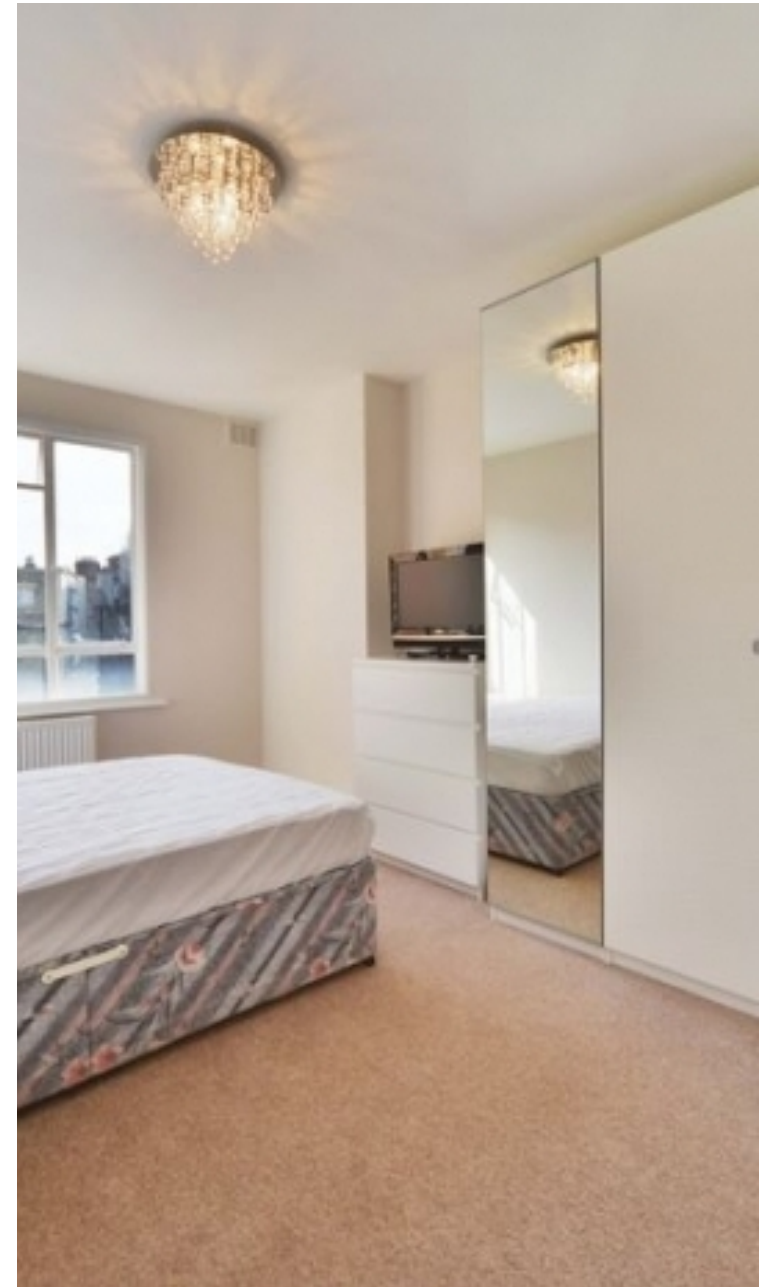
☎ +4477 7274 0351



🏠	Flat
🔑	Under Negotiation
🛏️	x 2
🛋️	x 1
🚶	x 1



"I was very impressed with Vita and their network of buyers. When the sale of my flat fell through (twice) they worked extremely hard to find new buyers in a difficult market - thank you!"



"Working with Vita properties has been a smooth experience! No complaints at all. Our letting agent, Diana has been fantastic and very helpful throughout the whole process. I would highly recommend both Vita properties and Diana."



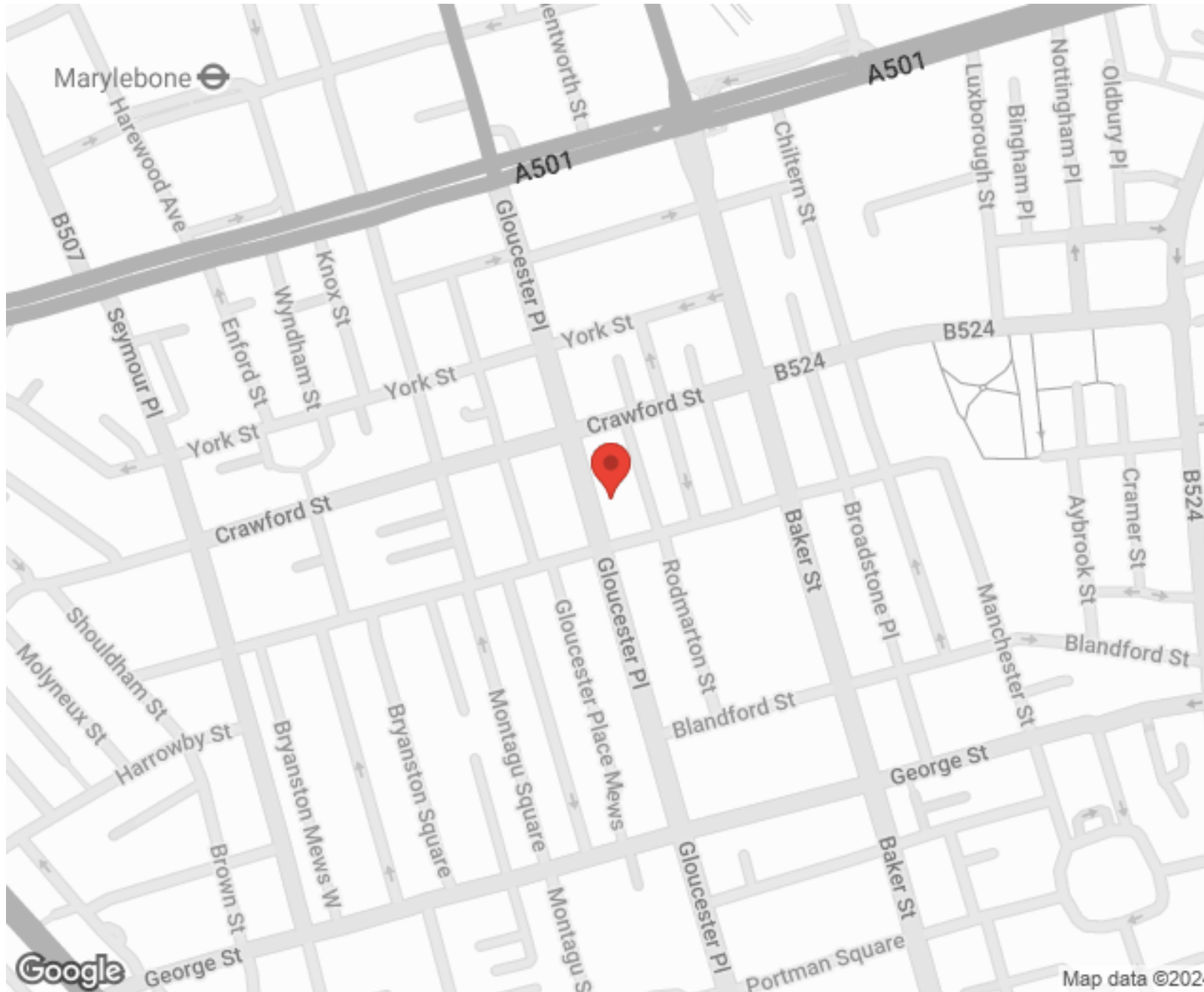
"I used Vita properties to find a flat recently and it was an overall professional, personalised and positive experience. Saira went the extra mile to accommodate to our needs and quick to help us whenever possible."



**MORE INFO, PICTURES,
CONTACT ON
OUR WEBSITE**



"Vita Properties is a very professional agency. My experience with them was incredible and the entire team was very helpful and kind throughout the renting process. I'd highly recommend!"



SCAN FOR MORE
GOOGLE REVIEWS






Google

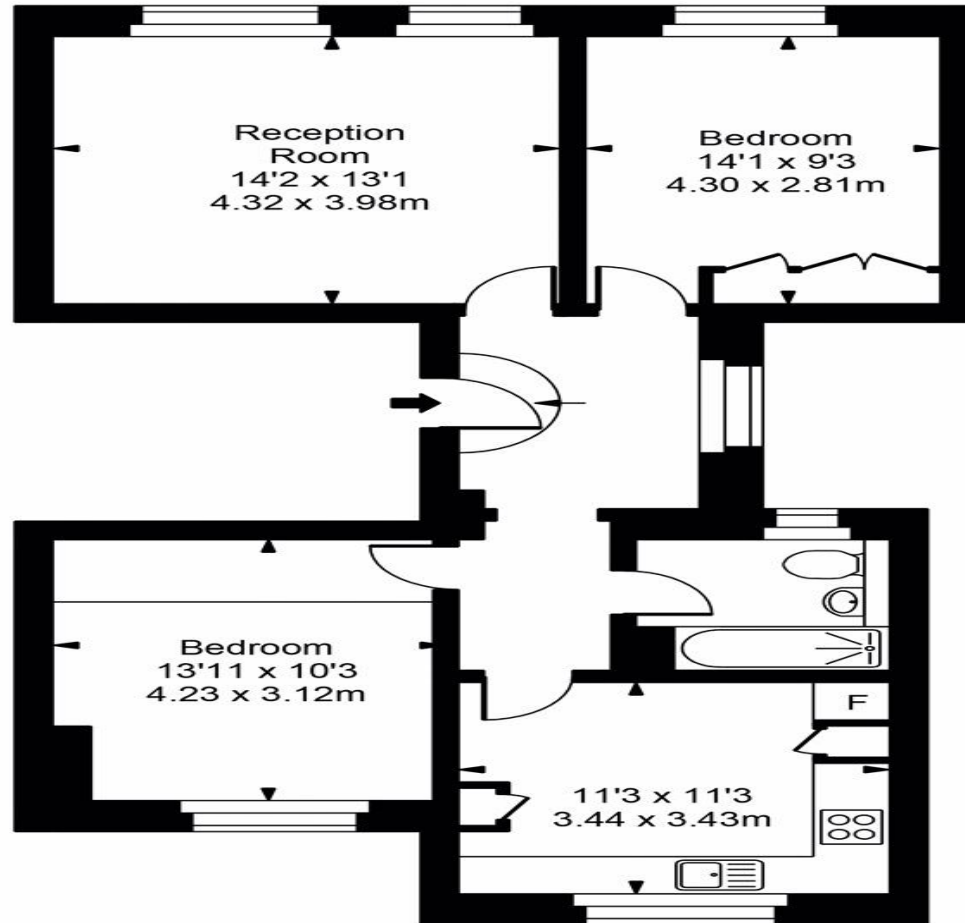
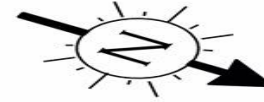


4.9 Stars | 132 Reviews

Find us on social media

-  vitaproperties
-  VitaProperties
-  VitaProperties

Gloucester Place



Top Floor/
Fourth Floor

Approx Gross Internal Area **754 Sq Ft - 70.05 Sq M**

For Illustration Purposes Only - Not To Scale
Floor plan by www.creativeplanettk.com

