



Priory Road, South Hampstead, London, NW6 .| £560

- Available immediately
- 3 double bedrooms
- Brand new kitchen
- Wooden floors

- 2 bathrooms
- Private garden

"Vita Properties have been tremendously helpful throughout the process of securing/renting my flat. Informative about the property, prompt communication, easy to use dashboard for sharing of information, and pleasant to work with. Highly recommend!"

Available immediately - Vita Properties are pleased to offer this spacious three bedroom apartment situated in a quiet residential street in South Hampstead. This property benefits from sole use of a well maintained garden and further comprises an en-suite bathroom and large master bedroom.

This property is offered furnished



Oliver Kent

✉ oliver.kent@vitaproperties.uk
☎ +4477 7274 0351





Flat



Available to Let



x 3



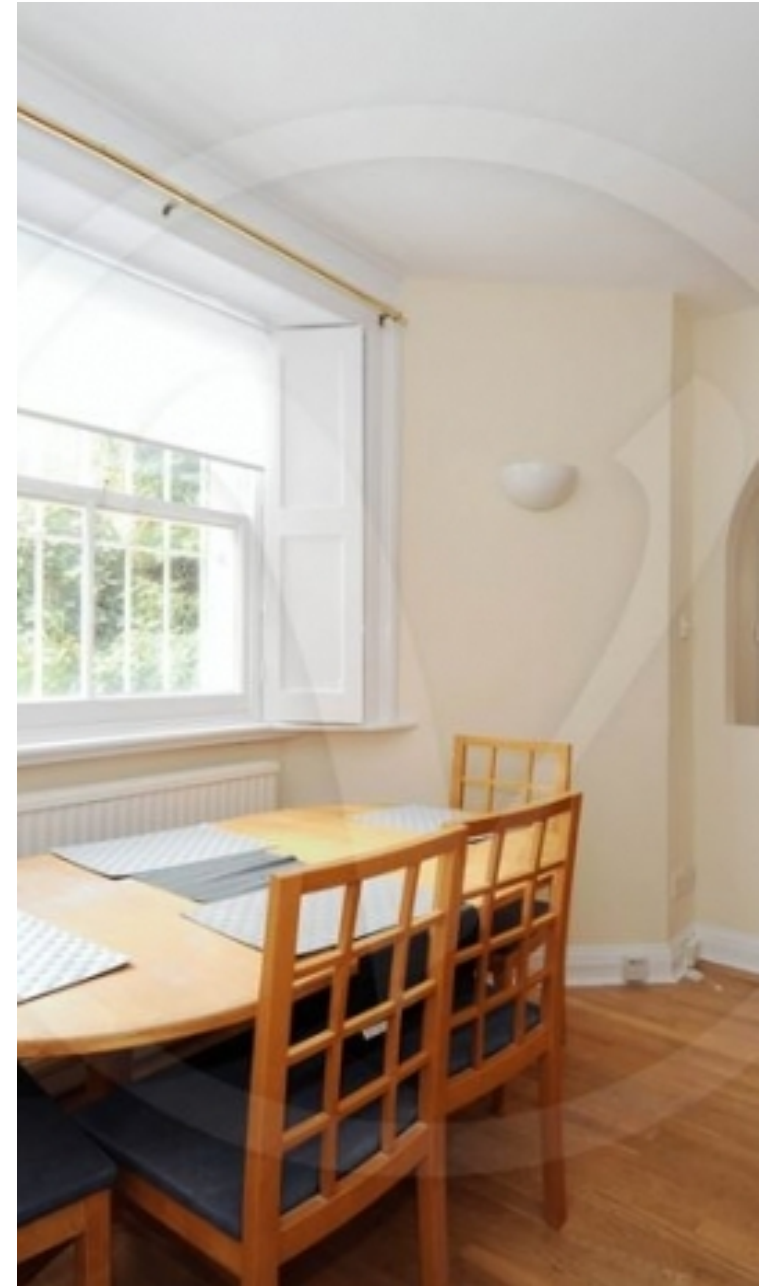
x 1



x 2



"I was very impressed with Vita and their network of buyers. When the sale of my flat fell through (twice) they worked extremely hard to find new buyers in a difficult market - thank you!"



"Working with Vita properties has been a smooth experience! No complaints at all. Our letting agent, Diana has been fantastic and very helpful throughout the whole process. I would highly recommend both Vita properties and Diana."



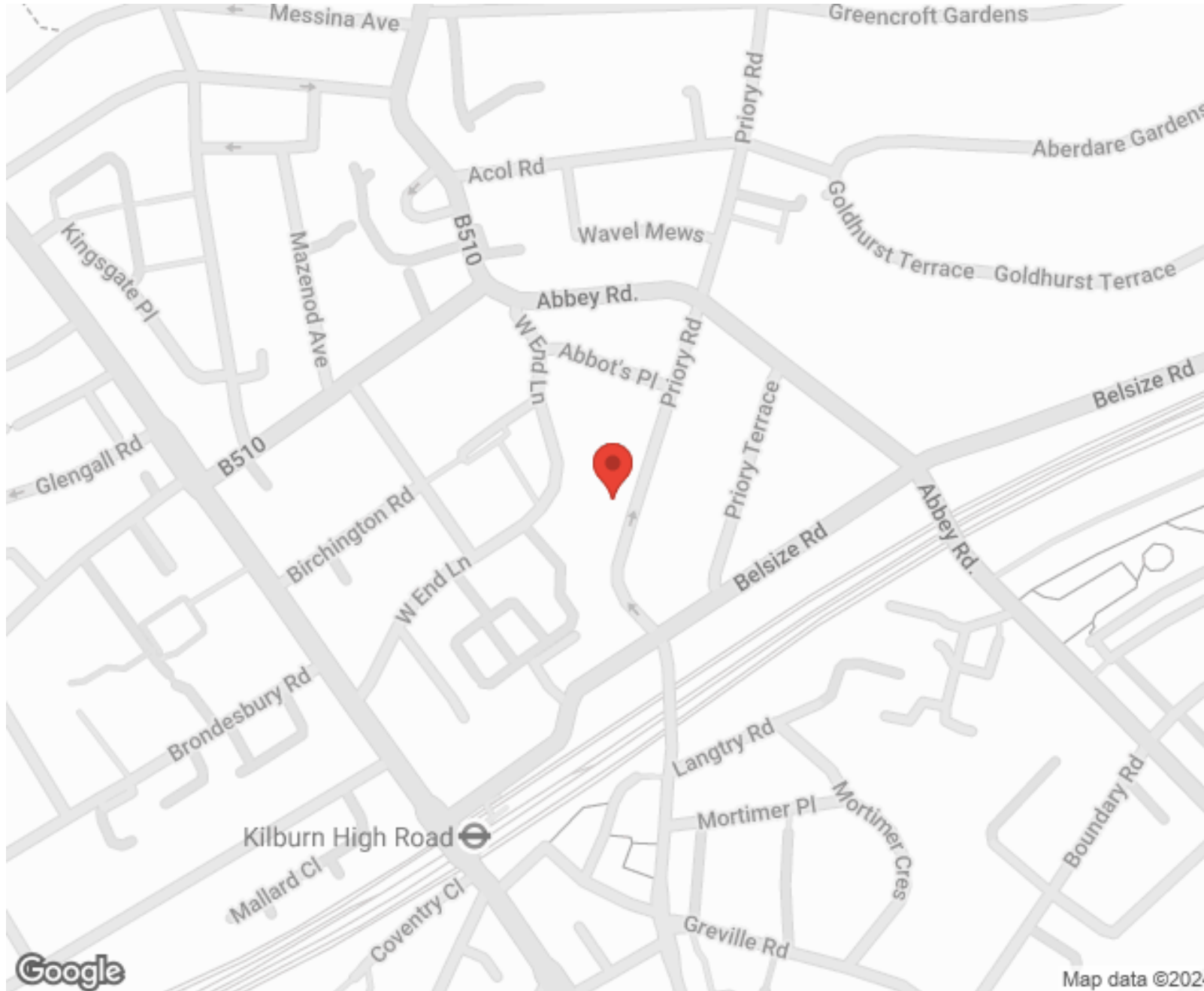
"I used Vita properties to find a flat recently and it was an overall professional, personalised and positive experience. Saira went the extra mile to accommodate to our needs and quick to help us whenever possible."



MORE INFO, PICTURES,
CONTACT ON
OUR WEBSITE



"Vita Properties is a very professional agency. My experience with them was incredible and the entire team was very helpful and kind throughout the renting process. I'd highly recommend!"



SCAN FOR MORE
GOOGLE REVIEWS



Google



4.9 Stars | 132 Reviews

Find us on social media

 vitaproperties

 VitaProperties

 VitaProperties

Approximate Gross Internal Area
872 sq ft / 81 sq m
Store = 11 sq ft / 1 sq m
Total = 883 sq ft / 82 sq m

