



Eden Close, Kensington, London, W8 .| £595

- Central Kensington location
- Modern
- Managed
- Furnished

- Available immediately

"Vita Properties have been tremendously helpful throughout the process of securing/renting my flat. Informative about the property, prompt communication, easy to use dashboard for sharing of information, and pleasant to work with. Highly recommend!"

Available immediately - This stunning, recently refurbished two bedroom, two-bathroom top floor apartment that has been finished and furnished to a very high standard.

The property benefits from a semi open plan kitchen leading to a dining and reception room and wooden floors. There is a master bedroom with a stylish en-suite bathroom, the second bedroom is also a good size double, a stylish main bathroom and a secure entrance from Adam and Eve Mews. Offered fully furnished.



Oliver Kent

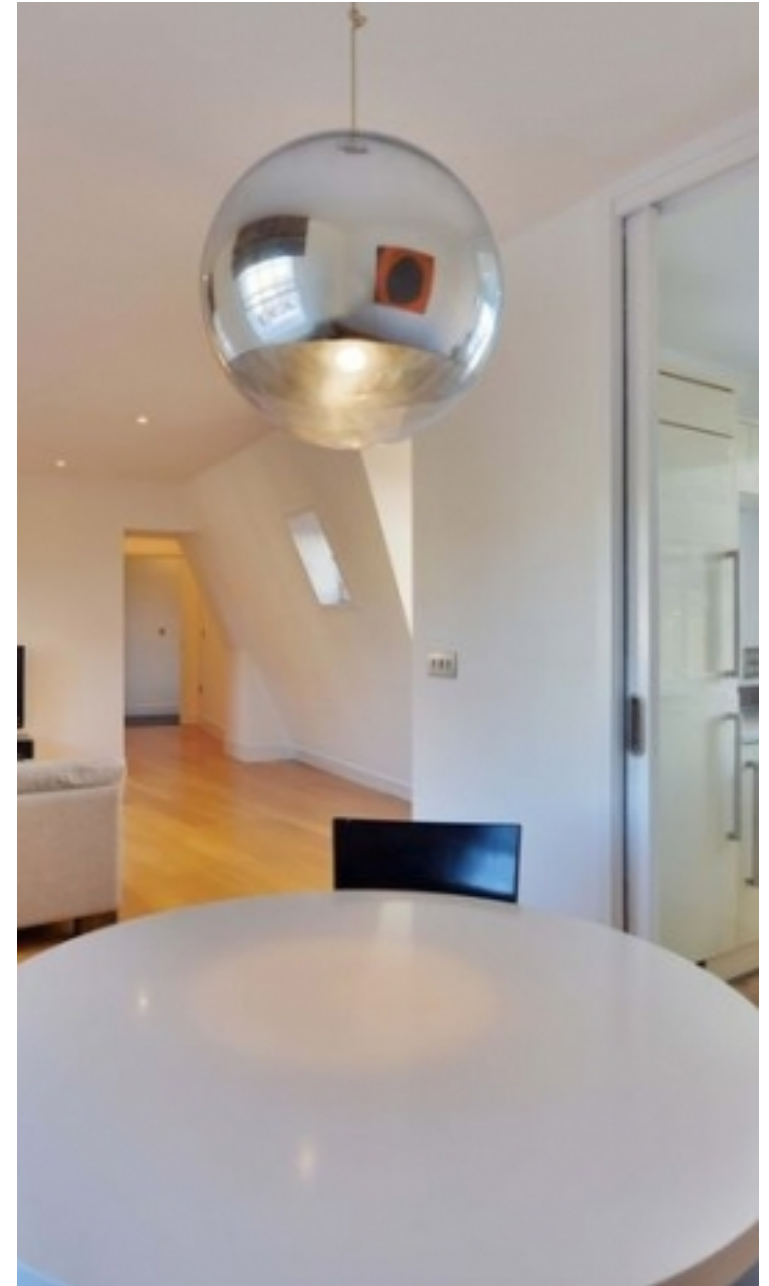
✉ oliver.kent@vitaproperties.uk
☎ +4477 7274 0351



🏠	Flat
🔑	Under Negotiation
🛏️	x 2
🚿	x 1
🚪	x 2



"I was very impressed with Vita and their network of buyers. When the sale of my flat fell through (twice) they worked extremely hard to find new buyers in a difficult market - thank you!"



"Working with Vita properties has been a smooth experience! No complaints at all. Our letting agent, Diana has been fantastic and very helpful throughout the whole process. I would highly recommend both Vita properties and Diana."



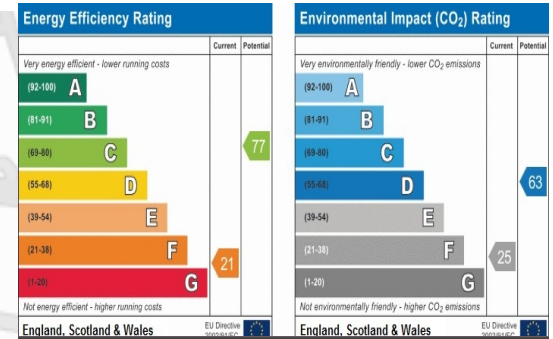
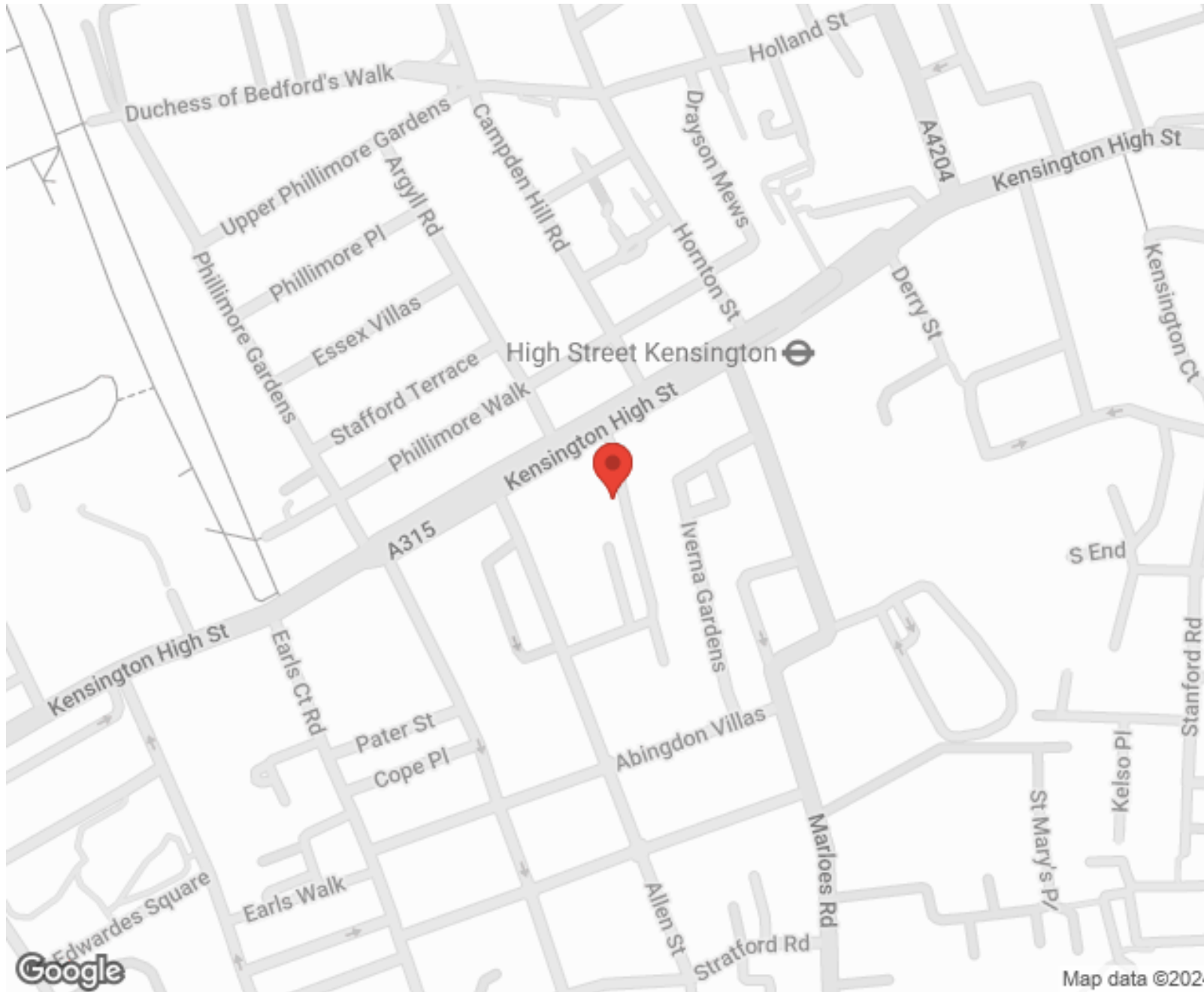
"I used Vita properties to find a flat recently and it was an overall professional, personalised and positive experience. Saira went the extra mile to accommodate to our needs and quick to help us whenever possible."



**MORE INFO, PICTURES,
CONTACT ON
OUR WEBSITE**



"Vita Properties is a very professional agency. My experience with them was incredible and the entire team was very helpful and kind throughout the renting process. I'd highly recommend!"



SCAN FOR MORE
GOOGLE REVIEWS



Google

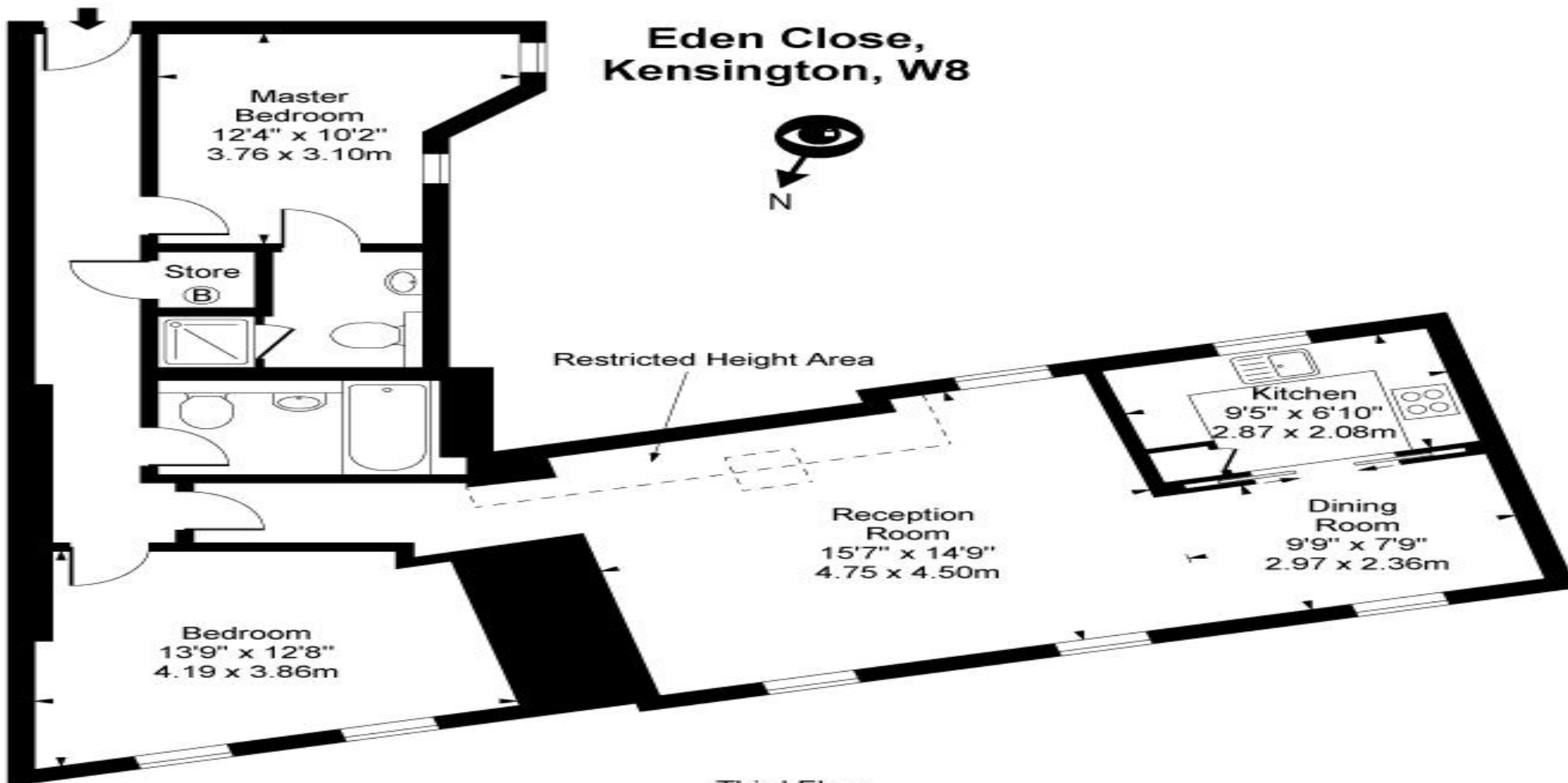


4.9 Stars | 132 Reviews

Find us on social media

- vitaproperties
- VitaProperties
- VitaProperties

**Eden Close,
Kensington, W8**



Third Floor

Approx Gross Internal Area 890 Sq Ft - 82.68 Sq M
(Including Restricted Height Area)

For Illustration Purposes Only - Not To Scale
Floor Plan by www.bpmmediagroup.com
Ref: No. P53876