



Gloucester Place, Marylebone, London, W1U .| £1,300

- Hot water and heating included
- Lift
- Spacious (1,733 ft² (161 m²)
- Three double bedrooms - Three bathrooms

- Offered furnished or unfurnished
- Available immediately

"Vita Properties have been tremendously helpful throughout the process of securing/renting my flat. Informative about the property, prompt communication, easy to use dashboard for sharing of information, and pleasant to work with. Highly recommend!"

Available immediately - A Large luxury second floor apartment with three large double bedrooms, three bathroom bright apartment. The property comprises a living room, large fully fitted eat in kitchen, master bedroom with built-in wardrobes and an en-suite shower room, a spacious second double bedroom with built-in storage, double bedroom, shower room and a family bathroom, there is also a lift. The property is located close to Regents Park as well as Marylebone train station.

Offered furnished or unfurnished



Oliver Kent

✉ oliver.kent@vitaproperties.uk

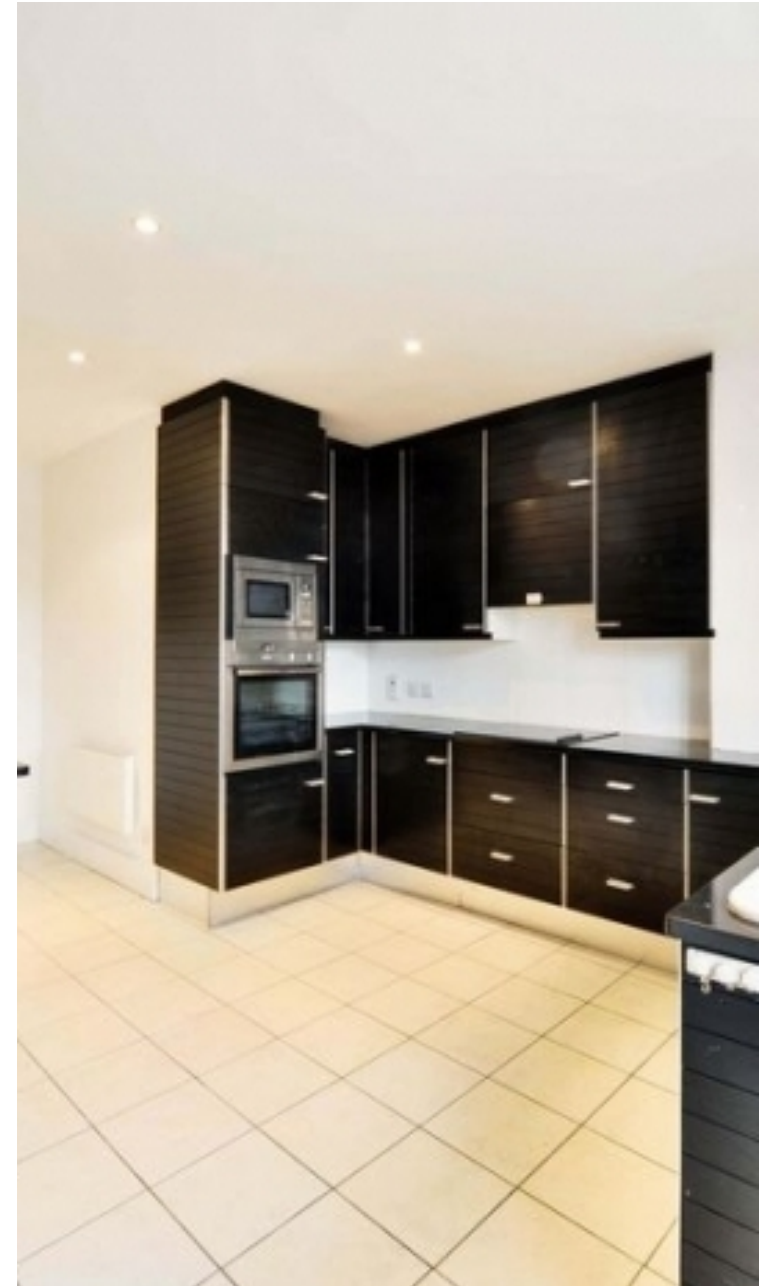
☎ +4477 7274 0351



🏠	Flat
🔑	Available to Let
🛏️	x 3
🛋️	x 1
🪑	x 3



"I was very impressed with Vita and their network of buyers. When the sale of my flat fell through (twice) they worked extremely hard to find new buyers in a difficult market - thank you!"



"Working with Vita properties has been a smooth experience! No complaints at all. Our letting agent, Diana has been fantastic and very helpful throughout the whole process. I would highly recommend both Vita properties and Diana."



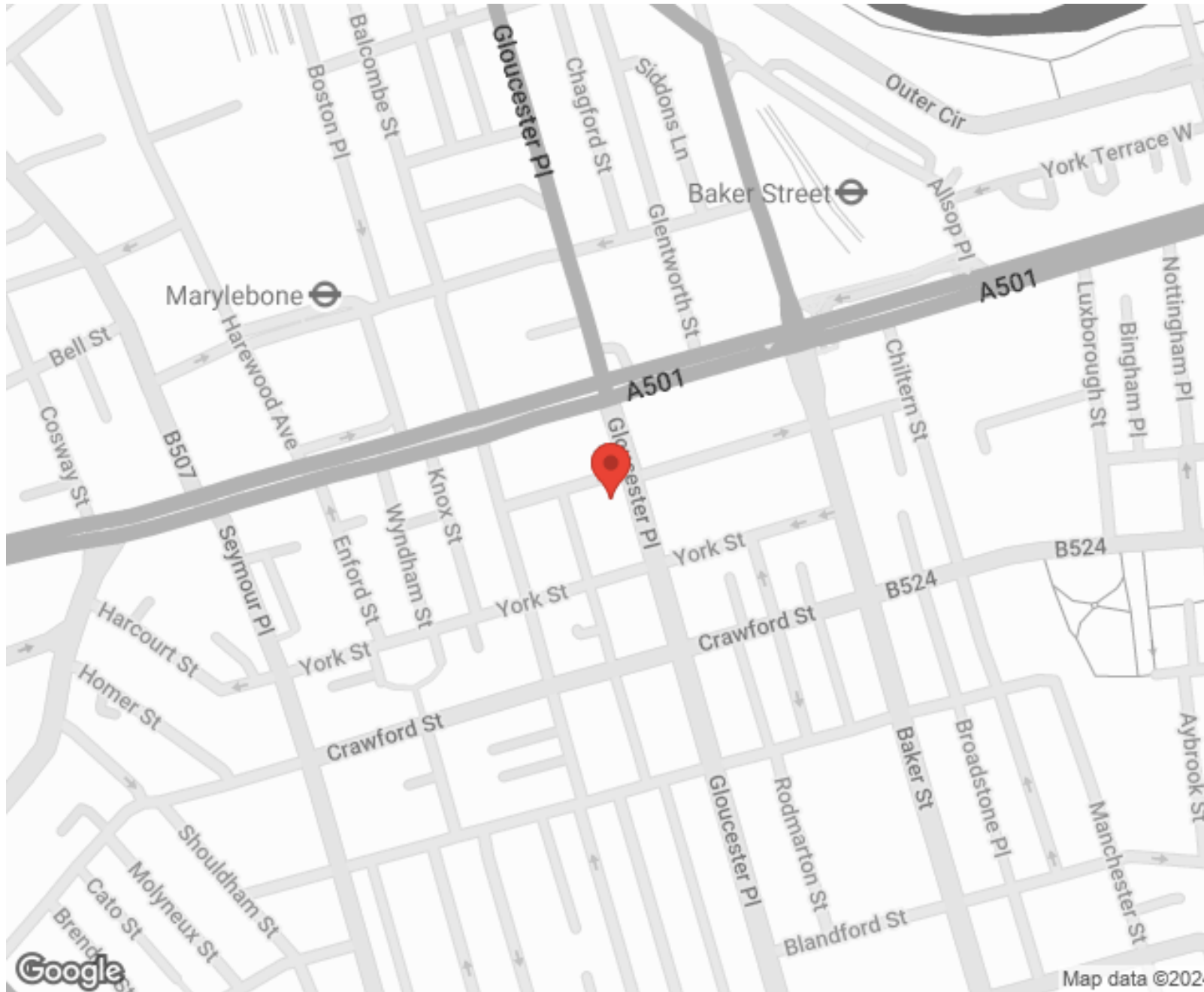
"I used Vita properties to find a flat recently and it was an overall professional, personalised and positive experience. Saira went the extra mile to accommodate to our needs and quick to help us whenever possible."



**MORE INFO, PICTURES,
CONTACT ON
OUR WEBSITE**



"Vita Properties is a very professional agency. My experience with them was incredible and the entire team was very helpful and kind throughout the renting process. I'd highly recommend!"



SCAN FOR MORE
GOOGLE REVIEWS






Google



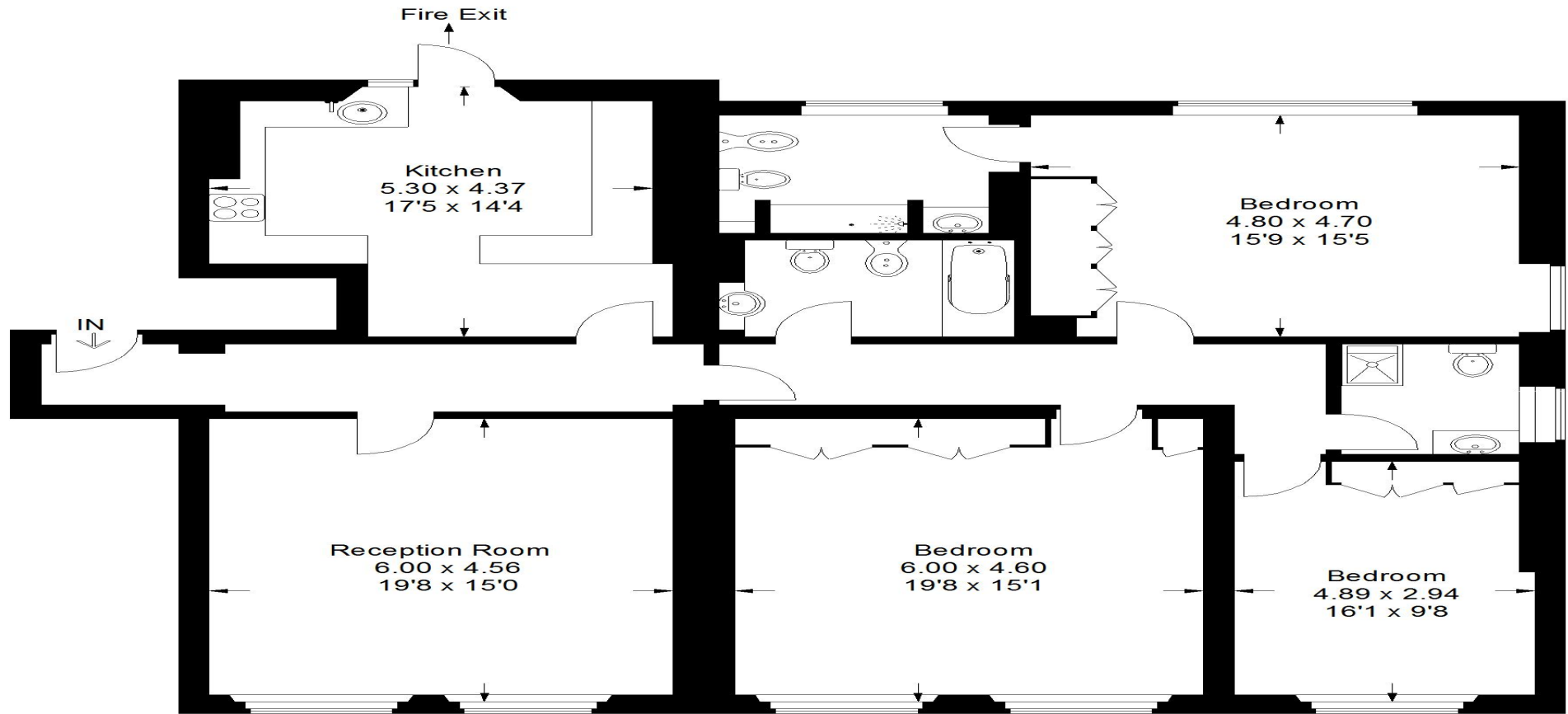
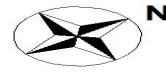
4.9 Stars | 132 Reviews

Find us on social media

-  vitaproperties
-  VitaProperties
-  VitaProperties

Gloucester Place

Approximate Gross Internal Area
161 sq m / 1733 sq ft



Second Floor

Illustration for identification purposes only, measurements are approximate, not to scale.
FloorplansUsketch.com © 2015 (ID 188045)