



Ingham Road, West Hampstead, London, NW6 .| £550

- Brand newly refurbished
- Private south facing garden
- Split level
- Moments to transport and amenities

- Master bedroom with ensuite
- Guest WC
- Available immediately

"Vita Properties have been tremendously helpful throughout the process of securing/renting my flat. Informative about the property, prompt communication, easy to use dashboard for sharing of information, and pleasant to work with. Highly recommend!"

Available immediately is this recently fully refurbished to a high-specification, two bedroom two bathroom split-level garden flat boasting spacious open-plan accommodation with modern fixtures and fittings, en suite bathroom and a lovely private garden.

Ingham Road is located moments from all the amenities of Fortune Green Road, Finchley Road and West End Lane.



Oliver Kent

✉ oliver.kent@vitaproperties.uk

☎ +4477 7274 0351



🏠	Flat
🔑	Available to Let
🛏️	x 2
🛋️	x 1
🚿	x 2

"I was very impressed with Vita and their network of buyers. When the sale of my flat fell through (twice) they worked extremely hard to find new buyers in a difficult market - thank you!"



"Working with Vita properties has been a smooth experience! No complaints at all. Our letting agent, Diana has been fantastic and very helpful throughout the whole process. I would highly recommend both Vita properties and Diana."



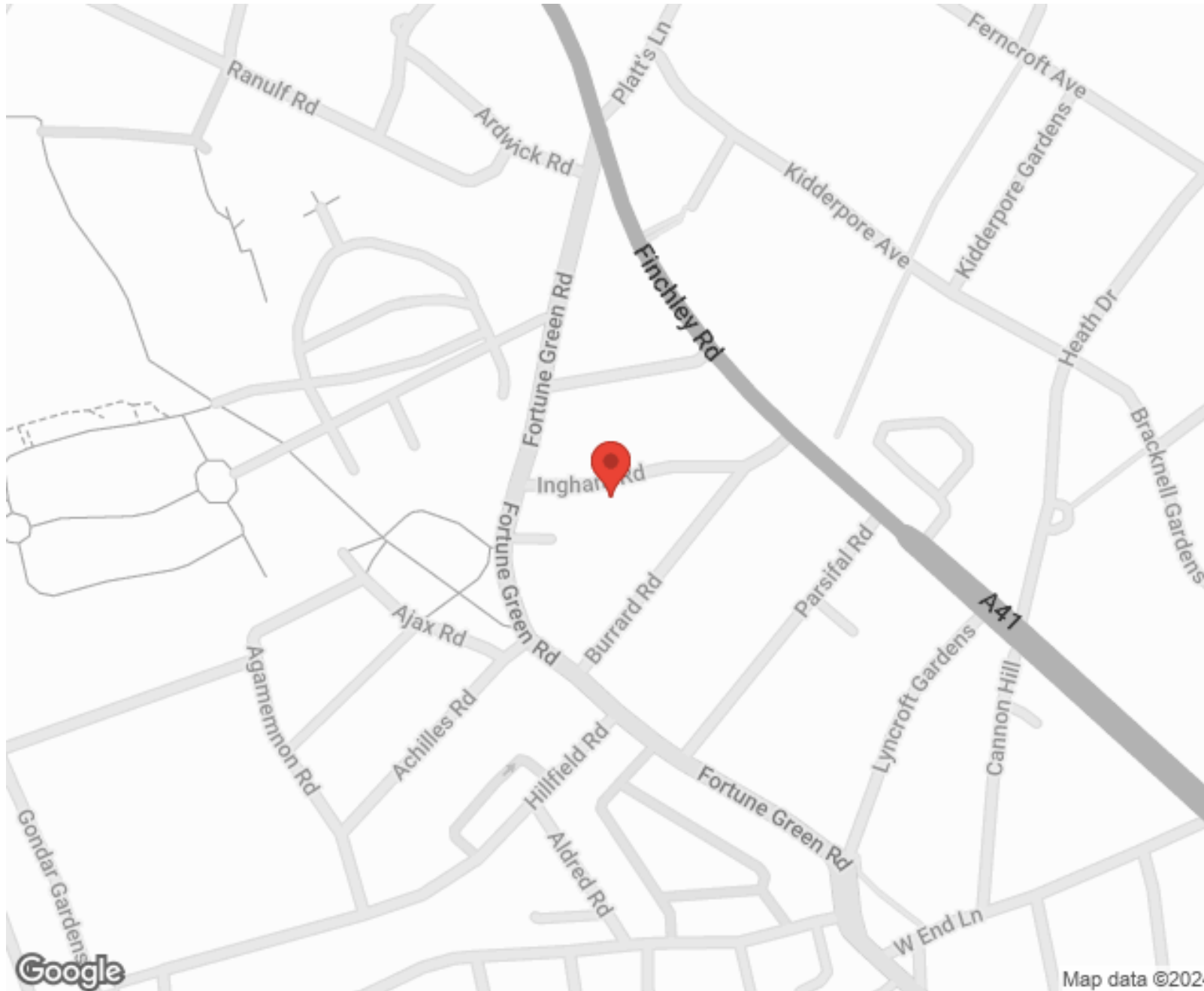
"I used Vita properties to find a flat recently and it was an overall professional, personalised and positive experience. Saira went the extra mile to accommodate to our needs and quick to help us whenever possible."



**MORE INFO, PICTURES,
CONTACT ON
OUR WEBSITE**



"Vita Properties is a very professional agency. My experience with them was incredible and the entire team was very helpful and kind throughout the renting process. I'd highly recommend!"



SCAN FOR MORE
GOOGLE REVIEWS




Google




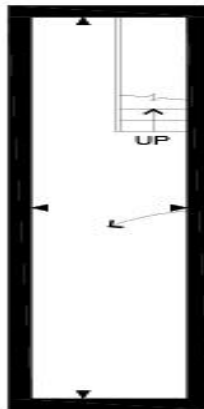
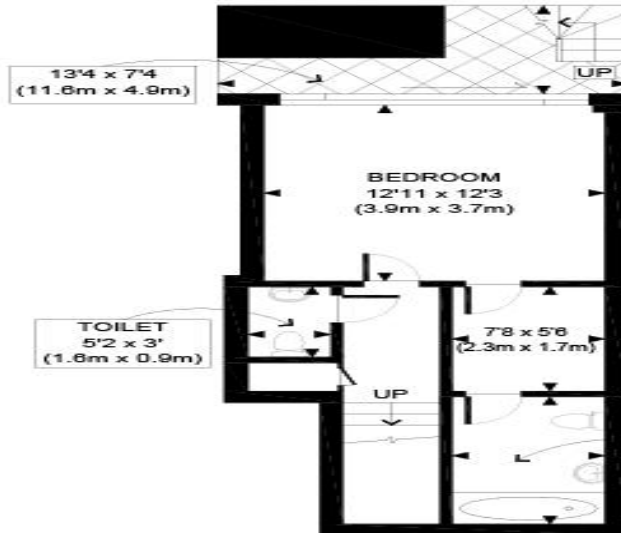
4.9 Stars | 132 Reviews

Find us on social media

 vitaproperties

 VitaProperties

 VitaProperties



BASEMENT
GROSS INTERNAL
FLOOR AREA 354 SQ FT

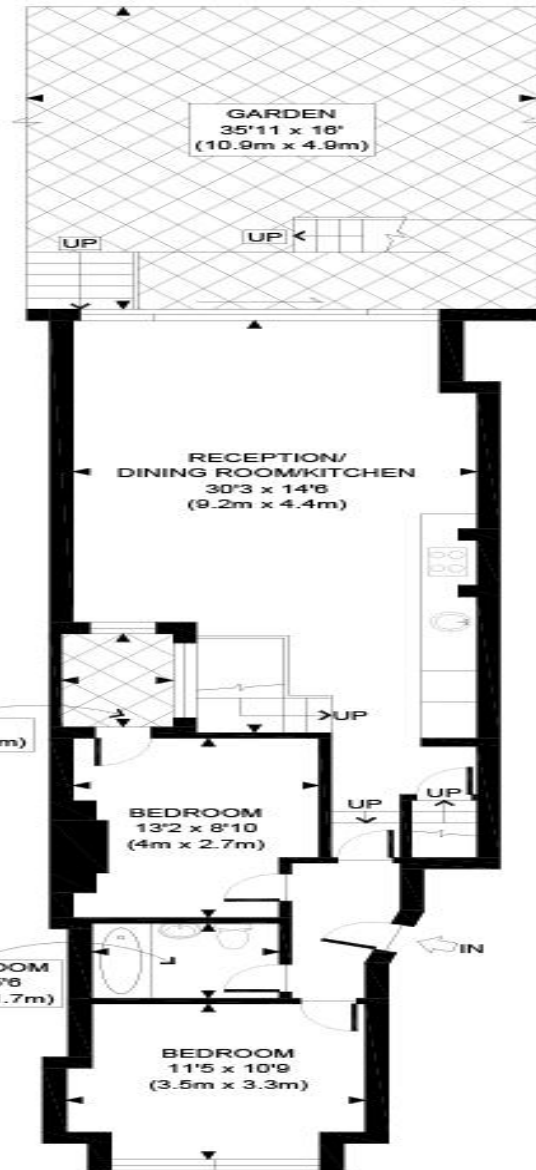
28' x 5'7"
(8.5m x 1.7m)

BASEMENT
GROSS INTERNAL
FLOOR AREA 156 SQ FT

BATHROOM
9'4" x 5'6"
(2.8m x 1.7m)

6'10" x 4'
(2.1m x 1.2m)

BATHROOM
6'9" x 5'6"
(2.1m x 1.7m)



GROUND FLOOR
GROSS INTERNAL
FLOOR AREA 755 SQ FT

APPROX. GROSS INTERNAL FLOOR AREA 1265 SQ FT / 118 SQM

Ref:

Copyright **photonplan**

Disclaimer: Floor plan measurements are approximate and are for illustrative purposes only. While we do not doubt the floor plan accuracy and completeness, you or your advisors should conduct a careful, independent investigation of the property in respect of monetary valuation