



Grove End Road, St Johns Wood, London, NW8 .| £525

- Own Entrance
- Heating and Hot Water Included
- Porter
- Moments from St Johns Wood Tube and Shops

- Newly Refurbished
- Available 30 August 2015

"Vita Properties have been tremendously helpful throughout the process of securing/renting my flat. Informative about the property, prompt communication, easy to use dashboard for sharing of information, and pleasant to work with. Highly recommend!"

30 August 2015 - Vita Properties are delighted to offer this beautifully refurbished one double bedroom apartment set within this popular portered block in the heart of St Johns Wood. The property boasts a large and bright reception room, a fully fitted kitchen, dining / study area, double bedroom and brand new bathroom. Further benefits include wood floors, built in wardrobes and HEATING AND HOT WATER INCLUDED IN THE RENT.

Located within moments from St Johns Wood tube station and High Street



Oliver Kent

✉ oliver.kent@vitaproperties.uk

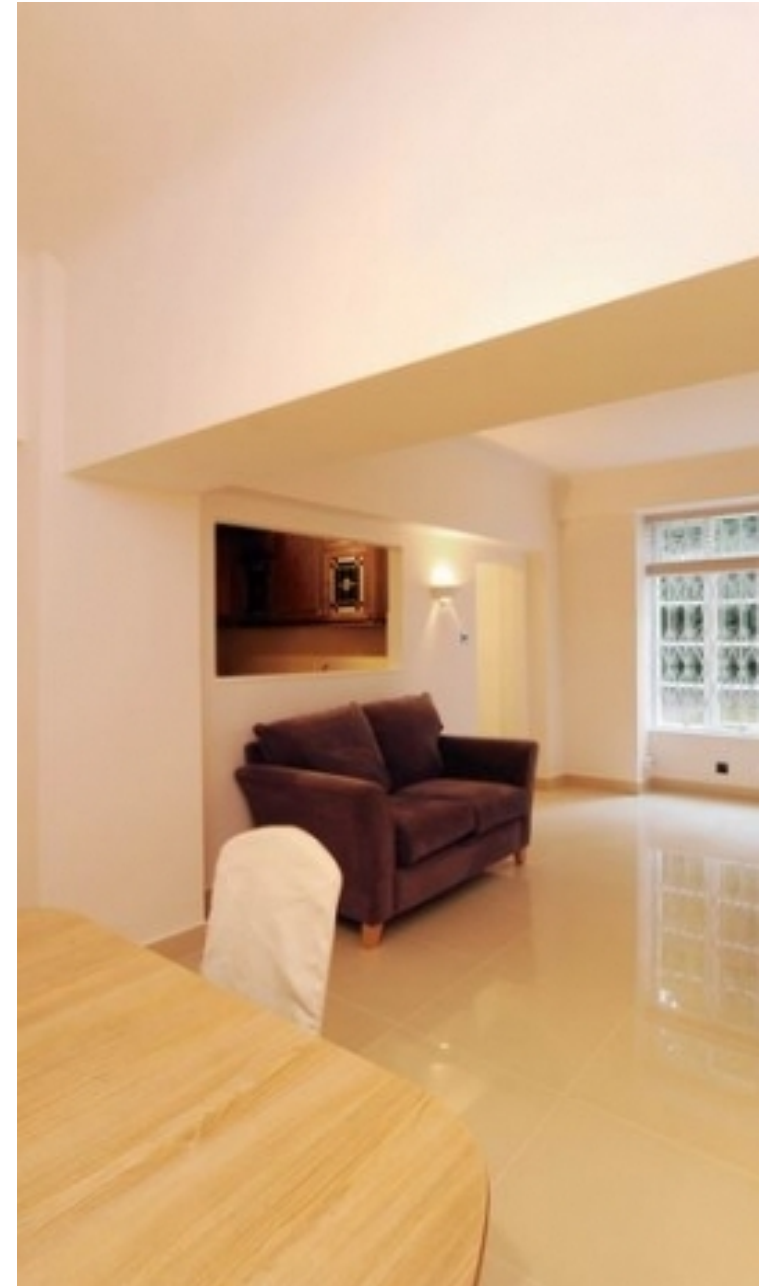
☎ +4477 7274 0351



🏠	Flat
🔑	Available to Let
🛏️	x 1
🍽️	x 1
🚿	x 1



"I was very impressed with Vita and their network of buyers. When the sale of my flat fell through (twice) they worked extremely hard to find new buyers in a difficult market - thank you!"



"Working with Vita properties has been a smooth experience! No complaints at all. Our letting agent, Diana has been fantastic and very helpful throughout the whole process. I would highly recommend both Vita properties and Diana."



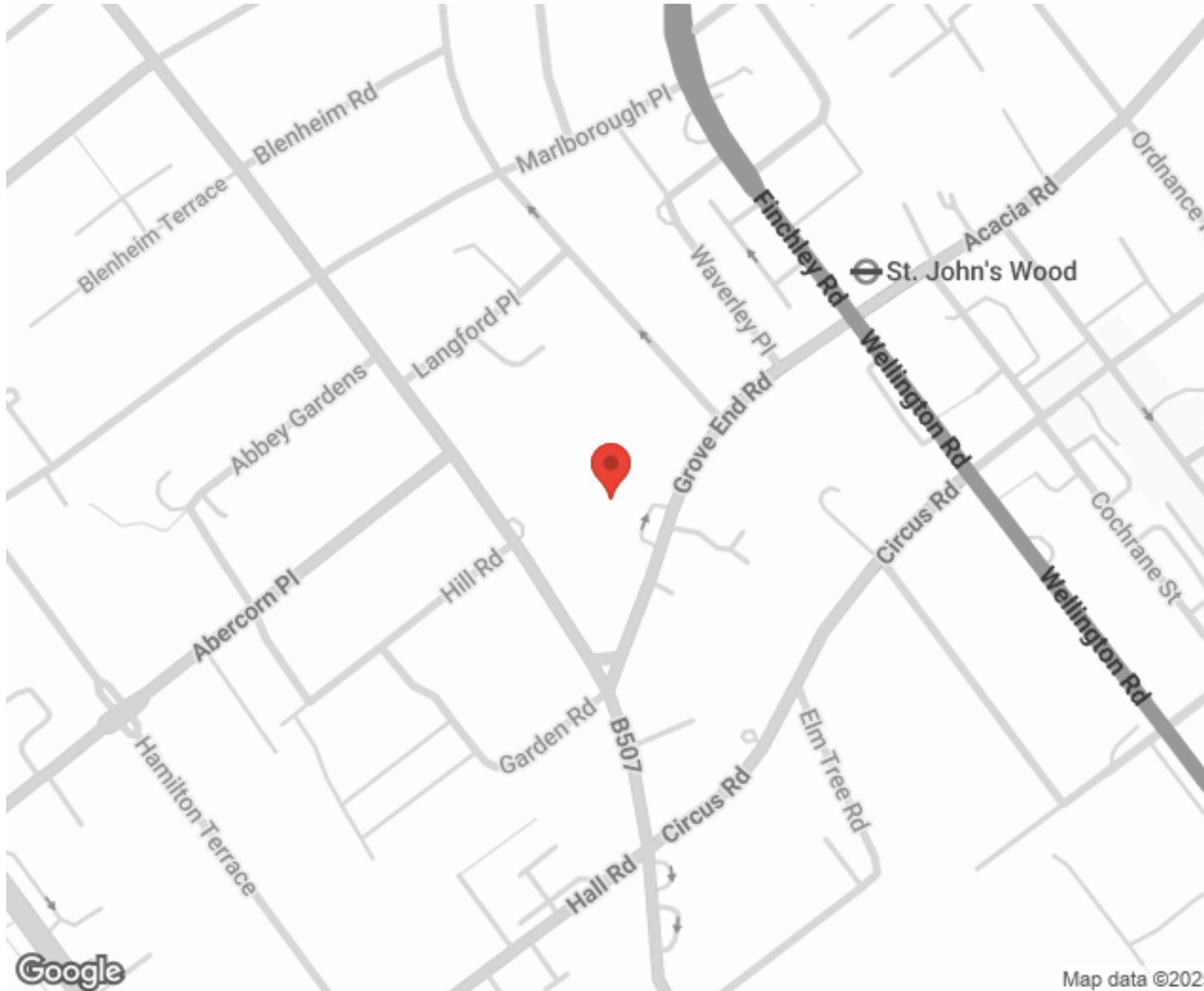
"I used Vita properties to find a flat recently and it was an overall professional, personalised and positive experience. Saira went the extra mile to accommodate to our needs and quick to help us whenever possible."



**MORE INFO, PICTURES,
CONTACT ON
OUR WEBSITE**



"Vita Properties is a very professional agency. My experience with them was incredible and the entire team was very helpful and kind throughout the renting process. I'd highly recommend!"



SCAN FOR MORE
GOOGLE REVIEWS






Google

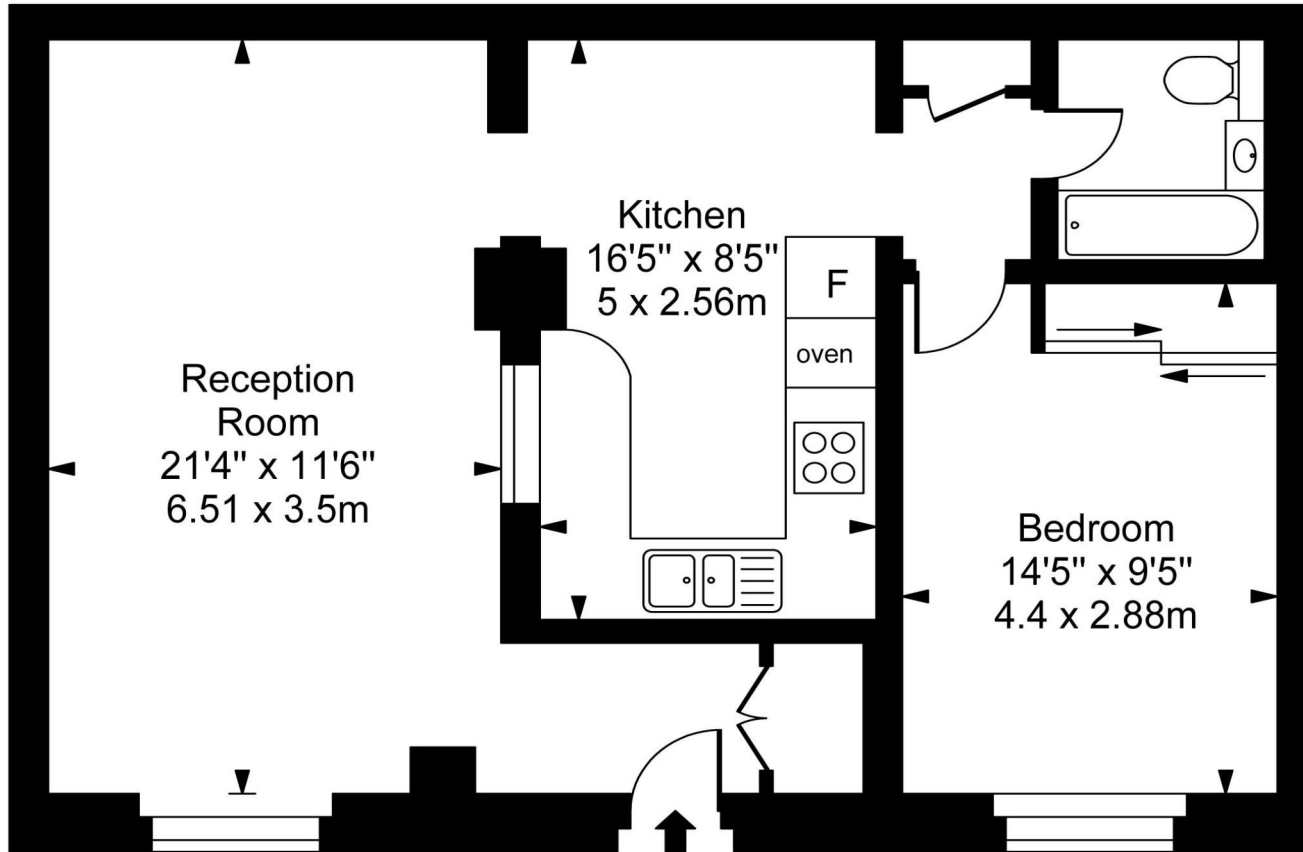
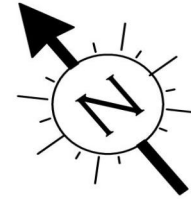


4.9 Stars | 132 Reviews

Find us on social media

-  vitaproperties
-  VitaProperties
-  VitaProperties

Grove End Gardens



Ground Floor

Approx Gross Internal Area **669 Sq Ft - 62.15 Sq M**

For Illustration Purposes Only - Not To Scale
Floor plan by www.creativeplanettk.com