



Gloucester Place, Marylebone, NW1 .| £595

- Newly refurbished
- 3 equal size bedrooms
- Moments to tube and shops
- First floor

- Furnished or Unfurnished
- Available immediately

"Vita Properties have been tremendously helpful throughout the process of securing/renting my flat. Informative about the property, prompt communication, easy to use dashboard for sharing of information, and pleasant to work with. Highly recommend!"

Available immediately is this Wonderful three bedroom first floor flat which is currently being renovated located in the amazing area of Marylebone. The flat has three equal size bedrooms, one bathroom, a good-size reception room and a fully-fitted kitchen. This property is close to the amenities of Baker Street which has a large number of wonderful shops, bars and restaurants. Regents Park is only moments from the property. The nearest Underground stations are Marylebone Station ((Bakerloo Line and national rail services) and Baker Street (Bakerloo line, Jubilee, Circle, Metropolitan, Hammersmith and City lines).



Oliver Kent

✉ oliver.kent@vitaproperties.uk

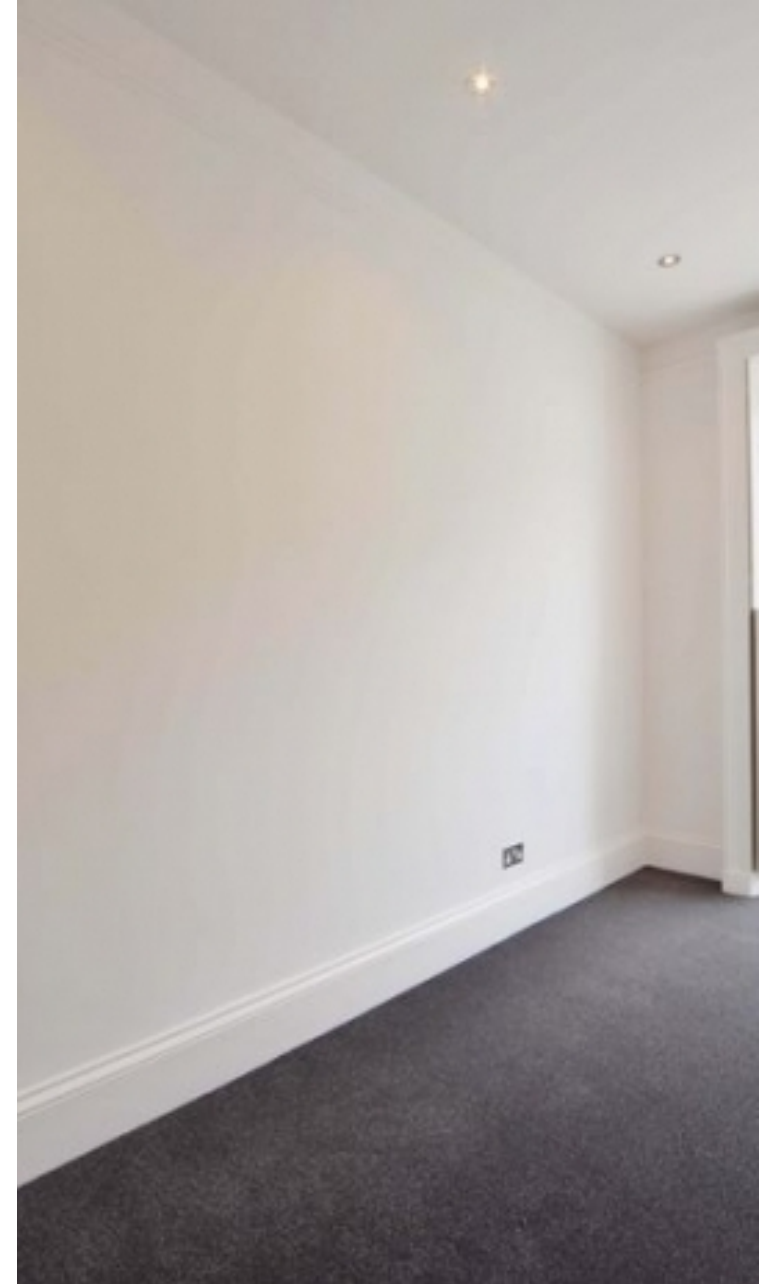
☎ +4477 7274 0351



🏠	Flat
🔑	Available to Let
🛏️	x 3
🛋️	x 1
🚿	x 1



"I was very impressed with Vita and their network of buyers. When the sale of my flat fell through (twice) they worked extremely hard to find new buyers in a difficult market - thank you!"



"Working with Vita properties has been a smooth experience! No complaints at all. Our letting agent, Diana has been fantastic and very helpful throughout the whole process. I would highly recommend both Vita properties and Diana."



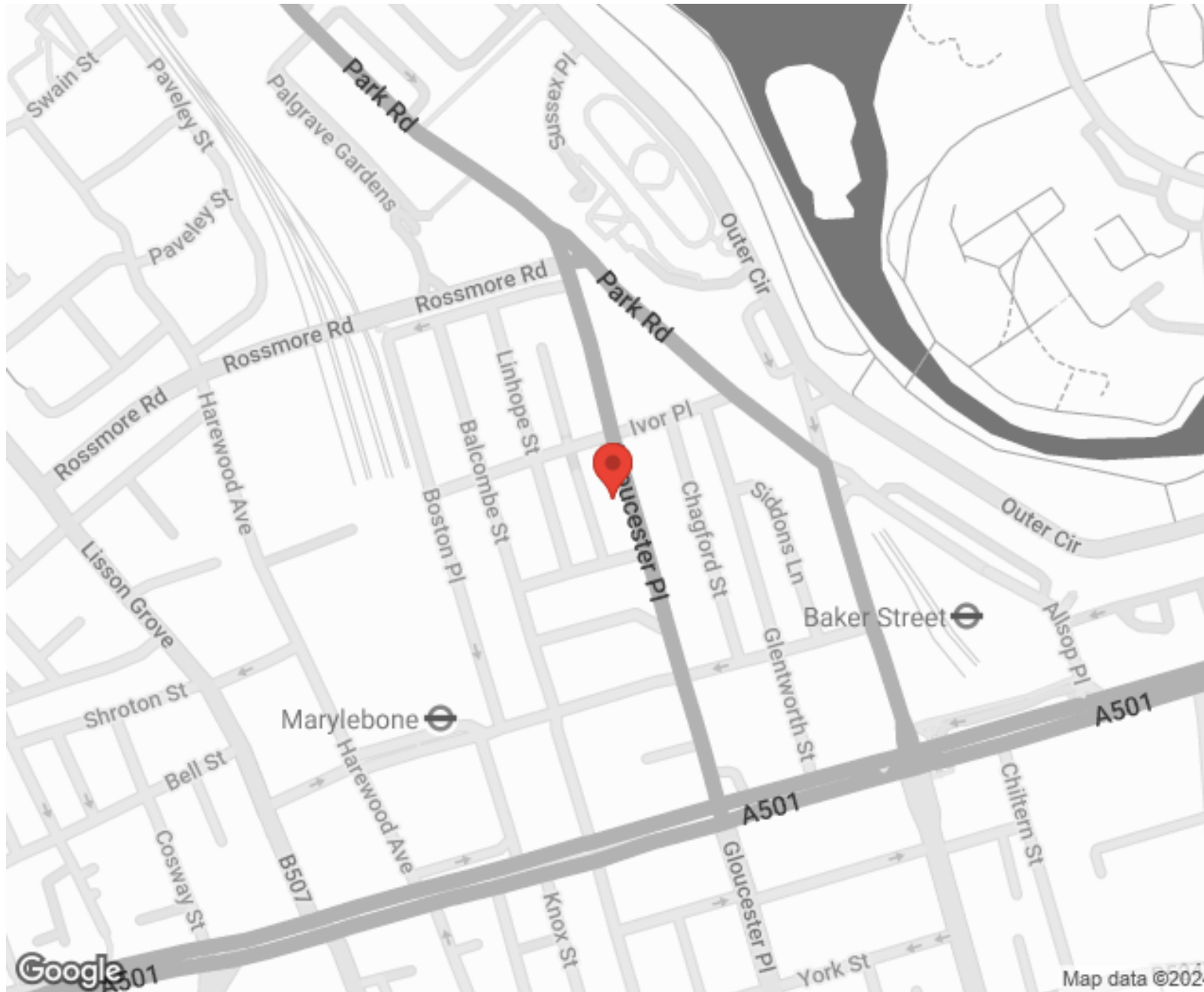
"I used Vita properties to find a flat recently and it was an overall professional, personalised and positive experience. Saira went the extra mile to accommodate to our needs and quick to help us whenever possible."



**MORE INFO, PICTURES,
CONTACT ON
OUR WEBSITE**



"Vita Properties is a very professional agency. My experience with them was incredible and the entire team was very helpful and kind throughout the renting process. I'd highly recommend!"



SCAN FOR MORE
GOOGLE REVIEWS






Google

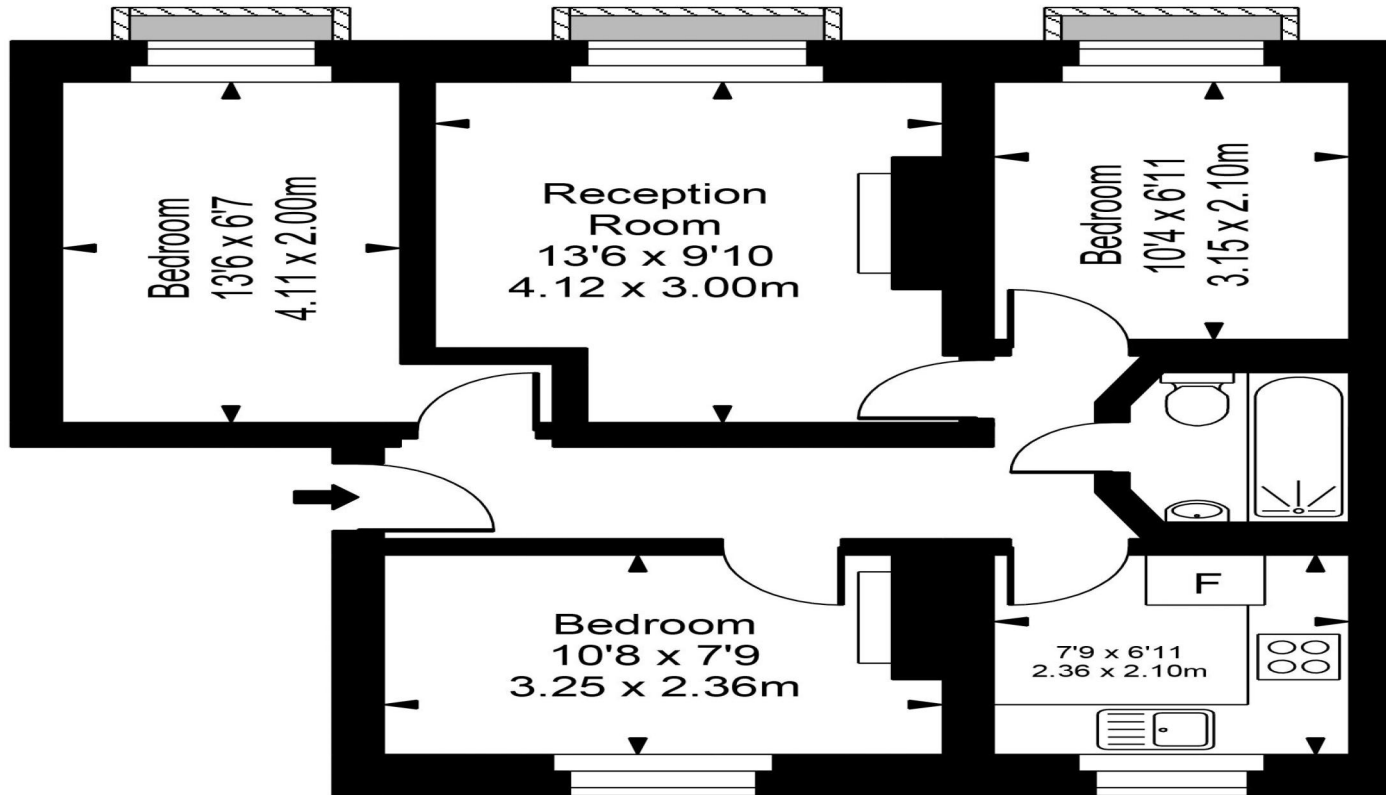
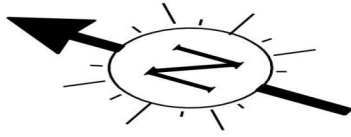


4.9 Stars | 132 Reviews

Find us on social media

-  vitaproperties
-  VitaProperties
-  VitaProperties

Gloucester Place



First Floor



Approx Gross Internal Area **581 Sq Ft - 53.97 Sq M**

For Illustration Purposes Only - Not To Scale
Floor plan by www.creativeplanetlk.com