



Pulse Apartments, Hampstead, London, NW6 .| £1,250,000

- Modern Building
- 24 Hour Porterage
- Balcony
- Underfloor Heating

- Chain free

"Vita Properties have been tremendously helpful throughout the process of securing/renting my flat. Informative about the property, prompt communication, easy to use dashboard for sharing of information, and pleasant to work with. Highly recommend!"

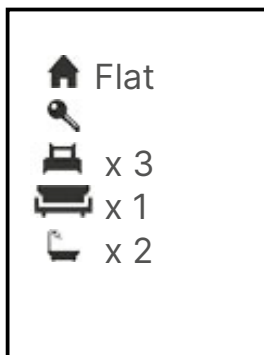
A three bedroom luxury apartment boasting approx. 1298sq ft in a modern development on the corner of Lymington Road and Finchley Road. This flat boasts three lovely size bedrooms, two bathrooms (1 ensuite) and a large modern kitchen. The flat benefits from a spacious lounge surrounded by large windows with a private balcony big enough to entertain, further 2 bedrooms, porter and an allocated parking space.

Further benefits include under floor heating and a concierge service as well as being a few minute's walk from transport (Jubilee and Metropolitan Lines) and the O2 Centre

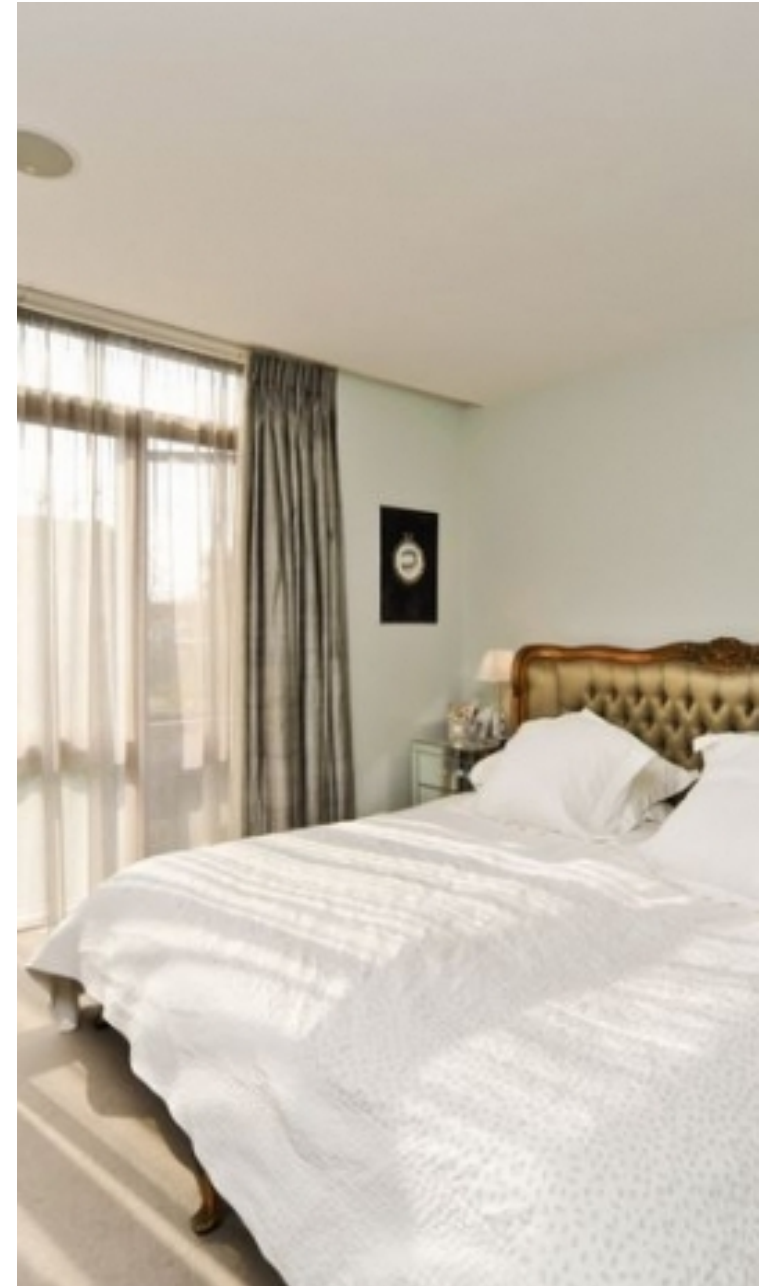


Oliver Kent

✉ oliver.kent@vitaproperties.uk
☎ +4477 7274 0351



"I was very impressed with Vita and their network of buyers. When the sale of my flat fell through (twice) they worked extremely hard to find new buyers in a difficult market - thank you!"



"Working with Vita properties has been a smooth experience! No complaints at all. Our letting agent, Diana has been fantastic and very helpful throughout the whole process. I would highly recommend both Vita properties and Diana."



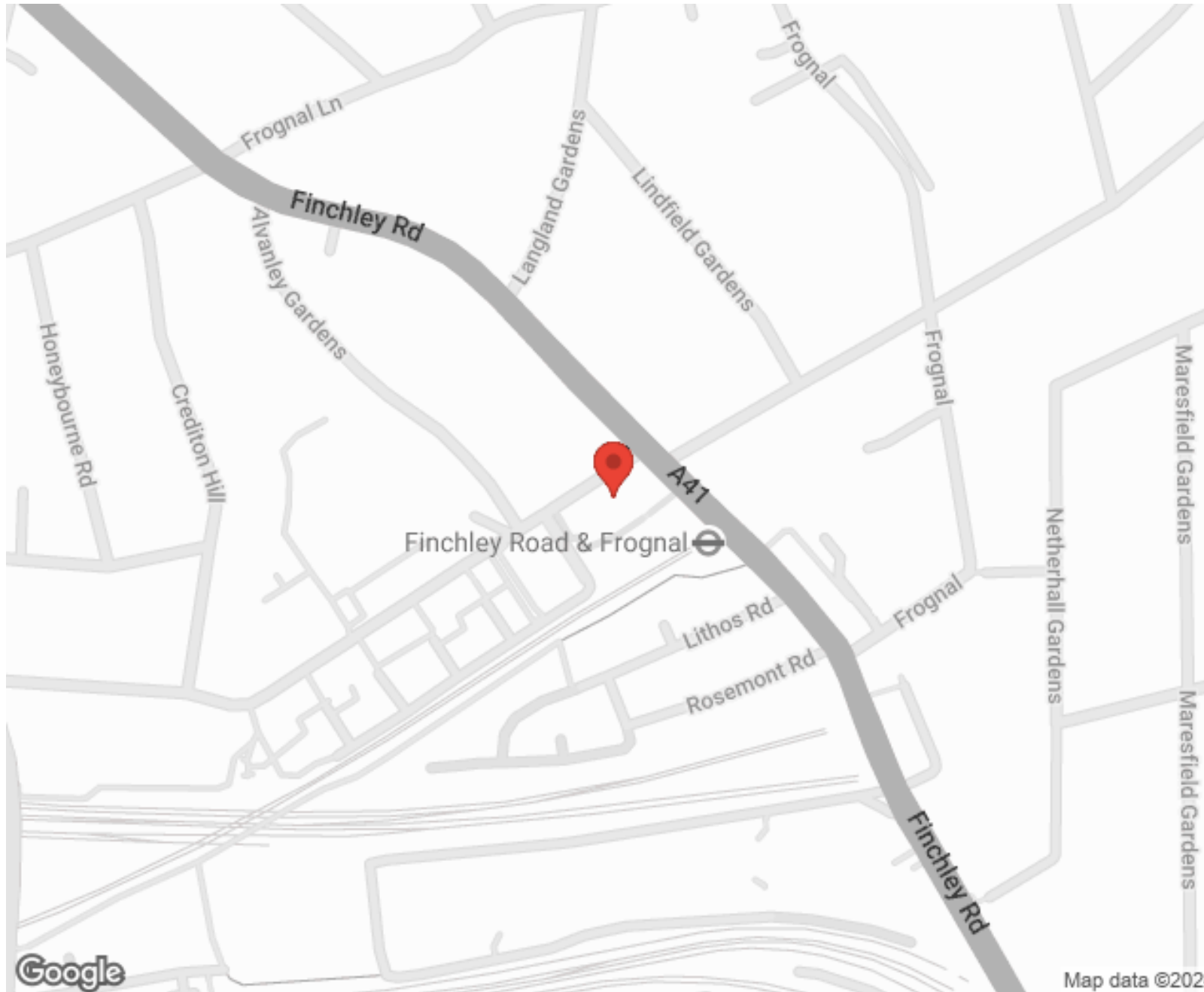
"I used Vita properties to find a flat recently and it was an overall professional, personalised and positive experience. Saira went the extra mile to accommodate to our needs and quick to help us whenever possible."



MORE INFO, PICTURES,
CONTACT ON
OUR WEBSITE



"Vita Properties is a very professional agency. My experience with them was incredible and the entire team was very helpful and kind throughout the renting process. I'd highly recommend!"



SCAN FOR MORE
GOOGLE REVIEWS



Google



4.9 Stars | 132 Reviews

Find us on social media

 vitaproperties

 VitaProperties

 VitaProperties



Total Approx. Floor Area 1298 Sq.Ft. (120.6 Sq.M.)

KeyAGENT LTD Floor Plans are produced and provided for illustration purposes only. Whilst every attempt has been made to ensure the plan is accurate and presents the property in the best way, measurements of doors, windows and rooms are approximate and no responsibility is taken for any error, omission or mis-statement. To find out more about KeyAGENT please visit www.keyagent.co.uk

(Tel: 0845 475 4165)

Made with Metropix ©2012