



Ordnance Hill, St Johns Wood, London NW8 .| £2,500

- Fully Refurbished
- Managed
- Large Reception
- Private Garden

- Guest Cloakroom
- Available Beginning of July

"Vita Properties have been tremendously helpful throughout the process of securing/renting my flat. Informative about the property, prompt communication, easy to use dashboard for sharing of information, and pleasant to work with. Highly recommend!"

Vita Properties are delighted to offer this newly refurbished end of terrace Georgian house. Arranged over four floors this family home comprises master bedroom with en suite shower room, three further bedrooms, family bathroom, large reception room leading onto a private garden, kitchen/dining room and guest cloakroom. Ordnance Hill is located within walking distance to St John's Wood High Street and underground station (Jubilee line).



Oliver Kent

✉ oliver.kent@vitaproperties.uk

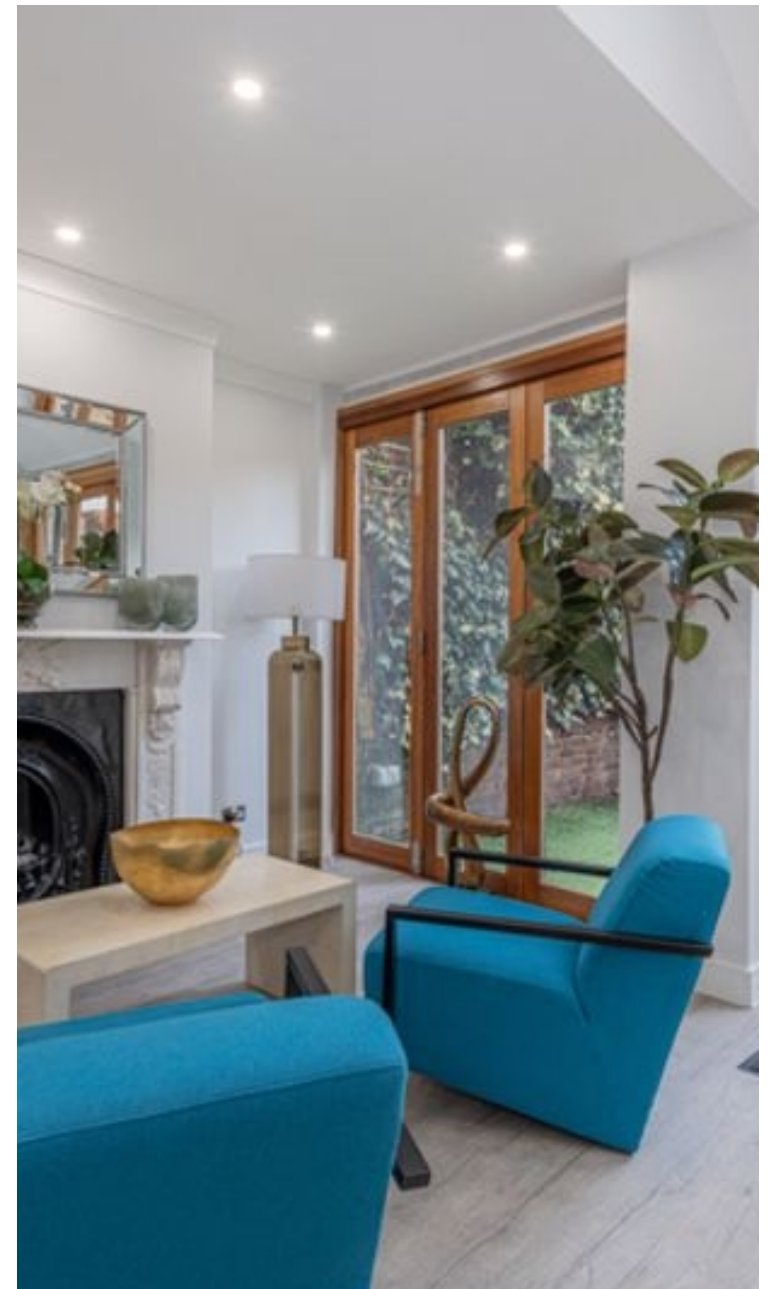
☎ +4477 7274 0351



🏠	House
🔑	Available to Let
🛏️	x 4
🛋️	x 2
🚿	x 2



"I was very impressed with Vita and their network of buyers. When the sale of my flat fell through (twice) they worked extremely hard to find new buyers in a difficult market - thank you!"



"Working with Vita properties has been a smooth experience! No complaints at all. Our letting agent, Diana has been fantastic and very helpful throughout the whole process. I would highly recommend both Vita properties and Diana."



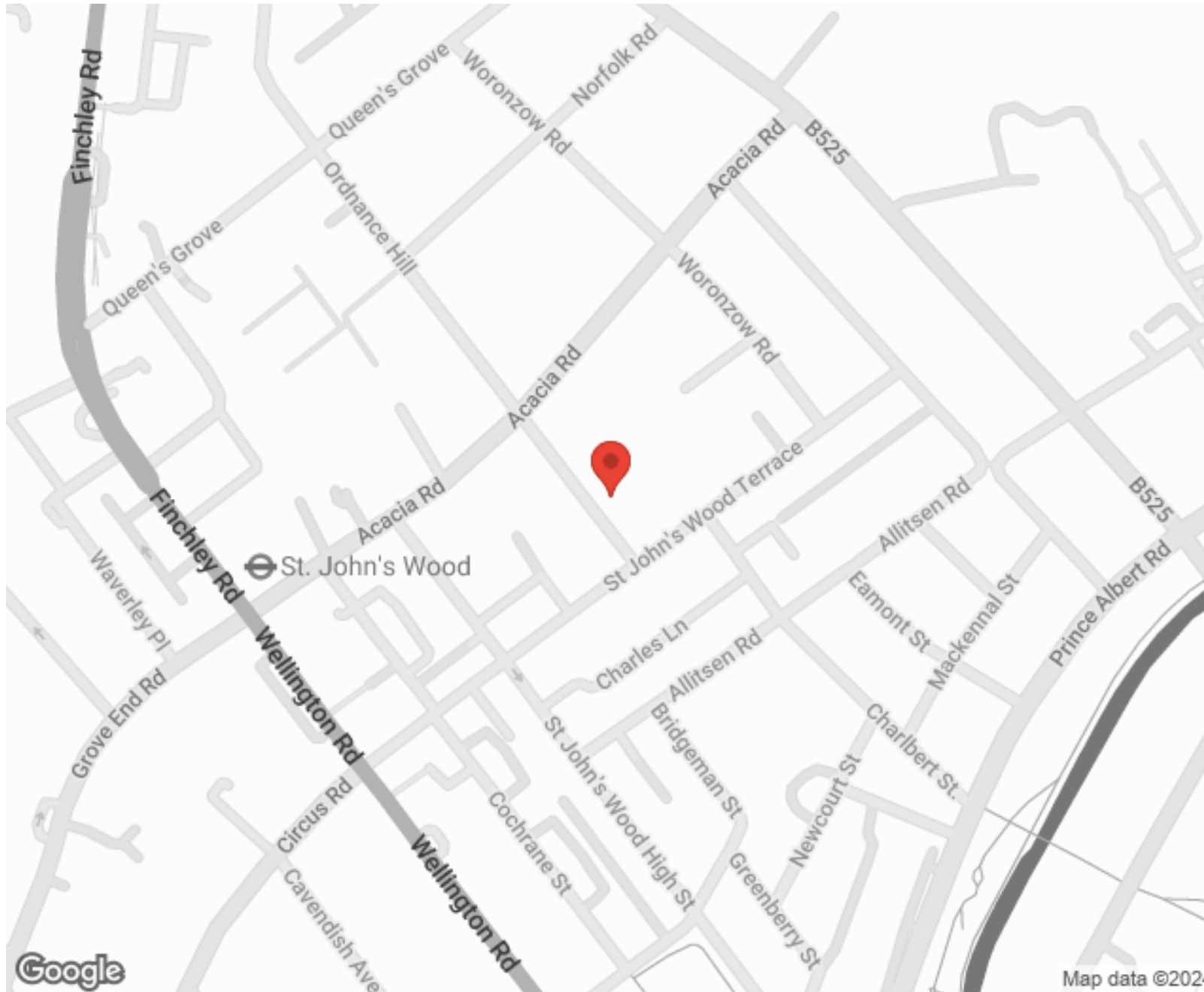
"I used Vita properties to find a flat recently and it was an overall professional, personalised and positive experience. Saira went the extra mile to accommodate to our needs and quick to help us whenever possible."



**MORE INFO, PICTURES,
CONTACT ON
OUR WEBSITE**



"Vita Properties is a very professional agency. My experience with them was incredible and the entire team was very helpful and kind throughout the renting process. I'd highly recommend!"



Energy rating and score

This property's current energy rating is D. It has the potential to be C.

[See how to improve this property's energy efficiency.](#)

Score	Energy rating	Current	Potential
92+	A		
81-91	B		
69-80	C		80 C
55-68	D	60 D	
39-54	E		
21-38	F		
1-20	G		

The graph shows this property's current and potential energy rating.

SCAN FOR MORE
GOOGLE REVIEWS



Google

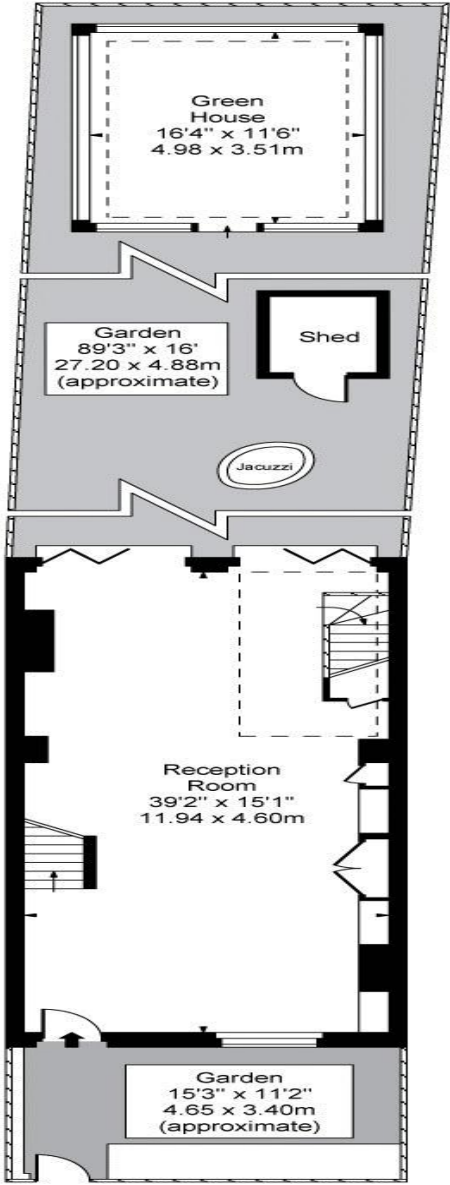


4.9 Stars | 132 Reviews

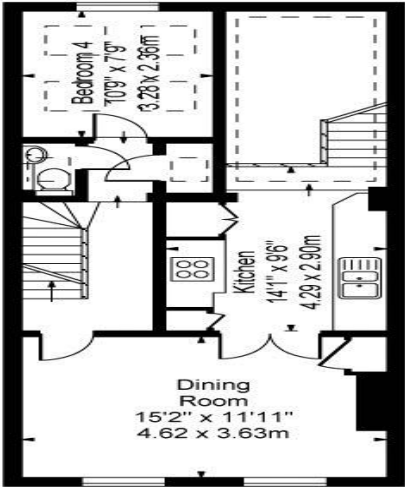
Find us on social media

- vitaproperties
- VitaProperties
- VitaProperties

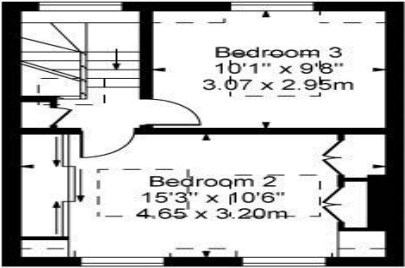
**Ordnance Hill,
St. John's Wood, NW8**



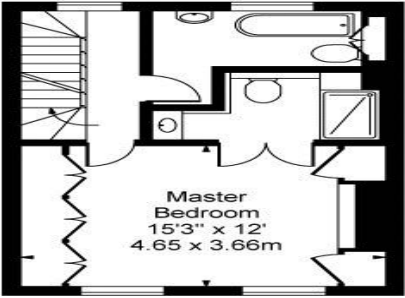
Ground Floor



First Floor



Third Floor



Second Floor

Approx Gross Internal Area Including Restricted Heights
Approx Gross Internal Area Excluding Restricted Heights

1893 Sq Ft - 175.86 Sq M
1881 Sq Ft - 174.74 Sq M

(Excluding Green House & Shed)

For Illustration Purposes Only - Not To Scale Floor Plan by www.nogaphotostudio.com Ref. No.12731
 This floor plan should be used as a general outline for guidance only. Any intending purchaser or lessee should satisfy themselves by inspection, searches, enquiries and full survey as to the correctness of each statement. Any areas, measurements or distances quoted are approximate and should not be used to value a property or be the basis of any sale or let.