



Dufours Place, Soho, W1F .| £365

- Newly refurbished
- Wooden floors
- South facing balcony
- Managed

- Available immediately
- Offered furnished or unfurnished

"Vita Properties have been tremendously helpful throughout the process of securing/renting my flat. Informative about the property, prompt communication, easy to use dashboard for sharing of information, and pleasant to work with. Highly recommend!"

Available immediately is this newly refurbished 11th floor studio apartment offering a stylish and comfortable open-plan living arrangement and has a magical south-facing balcony and large windows facing west offering wonderful views across London. The standard of finish throughout is impeccable: Stylish light oak flooring, brand new fully integrated kitchen with granite worktops, a luxury brand new bathroom and fitted storage. This really is a perfect Soho Pied-a Terre. Ideally located on the borders of Soho`s Carnaby District, and seconds walk from The Marshall Street Baths, Oxford Circus, Piccadilly Circus and numerous restaurants, high-end shops and amenities.

Offered furnished or unfurnished



Oliver Kent

✉ oliver.kent@vitaproperties.uk

☎ +4477 7274 0351



🏠	Flat
🔑	Available to Let
🛏️	x 0
🛋️	x 1
🚿	x 1



"I was very impressed with Vita and their network of buyers. When the sale of my flat fell through (twice) they worked extremely hard to find new buyers in a difficult market - thank you!"



"Working with Vita properties has been a smooth experience! No complaints at all. Our letting agent, Diana has been fantastic and very helpful throughout the whole process. I would highly recommend both Vita properties and Diana."



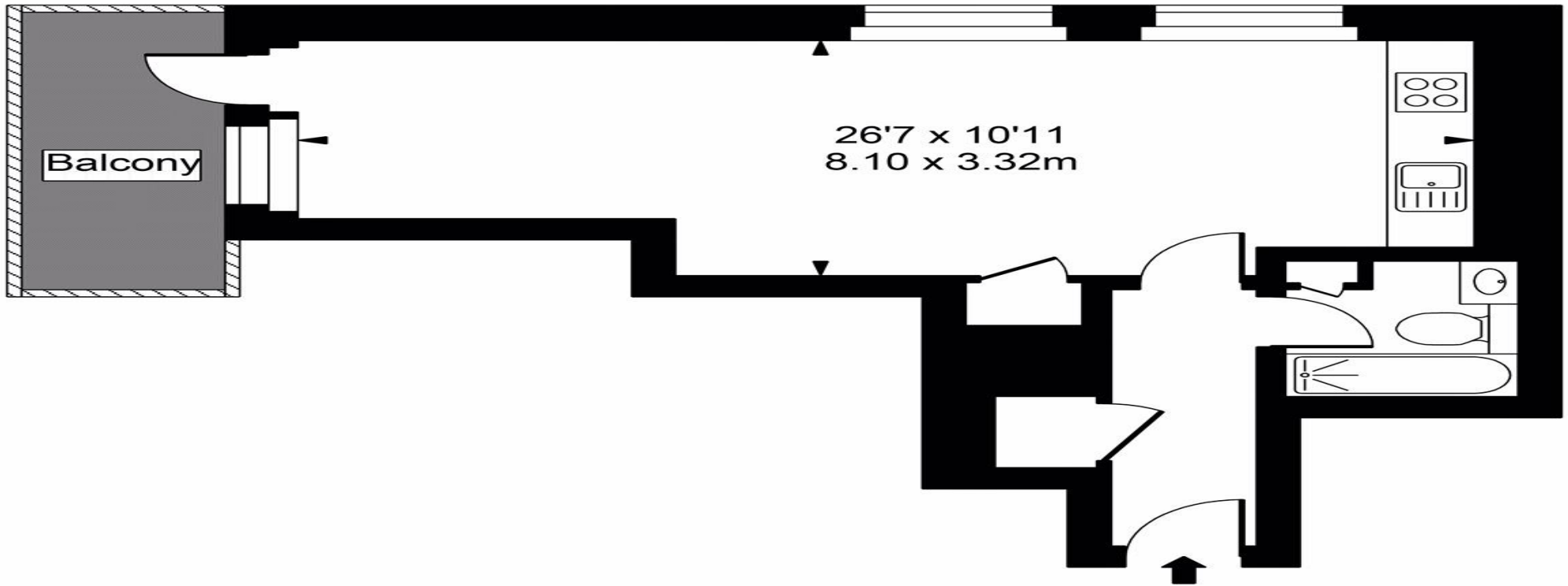
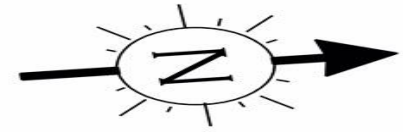
"I used Vita properties to find a flat recently and it was an overall professional, personalised and positive experience. Saira went the extra mile to accommodate to our needs and quick to help us whenever possible."



**MORE INFO, PICTURES,
CONTACT ON
OUR WEBSITE**



Dufours Place



Eleventh Floor



Approx Gross Internal Area **358 Sq Ft - 33.26 Sq M**

For Illustration Purposes Only - Not To Scale
Floor plan by www.creativeplanetlk.com