



Meadowbank, Primrose Hill, London, NW3 .| £2,200

- Available 01 June 2016
- High tec fittings
- Modernised to a high standard
- Adjacent to Primrose Hill

- Off street parking
- Private garden

"Vita Properties have been tremendously helpful throughout the process of securing/renting my flat. Informative about the property, prompt communication, easy to use dashboard for sharing of information, and pleasant to work with. Highly recommend!"

We are pleased to offer this newly refurbished four bedroom (all en-suite) townhouse adjacent to the beautiful green and open spaces of Primrose Hill. The house is in outstanding condition and benefits from off street parking for two cars and boasts an attractive lawned garden that spreads directly on to communal gardens.

Meadowbank is located within seconds to Primrose Hill Park and is within a short walk of the local transport facilities (Northern Line Underground Station) and the popular shopping amenities of Primrose Hill Village with its classic boutiques and restaurants.

Accommodation Summary: Principal Bedroom with En-Suite Bathroom, Second Bedroom with En-Suite Bathroom, Two Further Bedrooms with En-Suite Shower Rooms, Dining Room, Reception Room, Fitted Kitchen/Breakfast Room, Guest Cloakroom

Amenities: Under Floor Heating, Lutron Lighting System, Piped Music, Provision for Air Conditioning, cat 6 Cabling Throughout, Rear Patio Garden, Direct Access to Communal Gardens, Off-Street Parking for Two Car



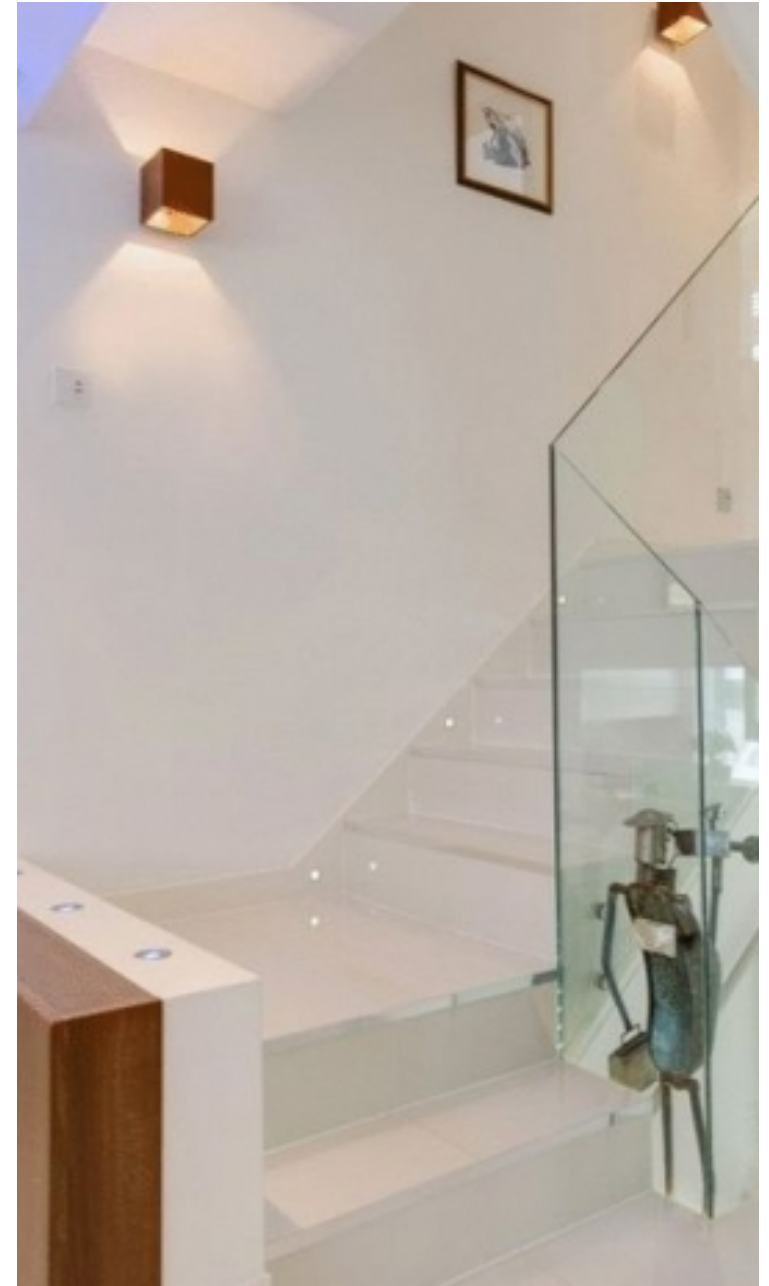
Oliver Kent

✉ oliver.kent@vitaproperties.uk
☎ +4477 7274 0351



	House
	Available to Let
	x 4
	x 2
	x 4

"I was very impressed with Vita and their network of buyers. When the sale of my flat fell through (twice) they worked extremely hard to find new buyers in a difficult market - thank you!"



"Working with Vita properties has been a smooth experience! No complaints at all. Our letting agent, Diana has been fantastic and very helpful throughout the whole process. I would highly recommend both Vita properties and Diana."



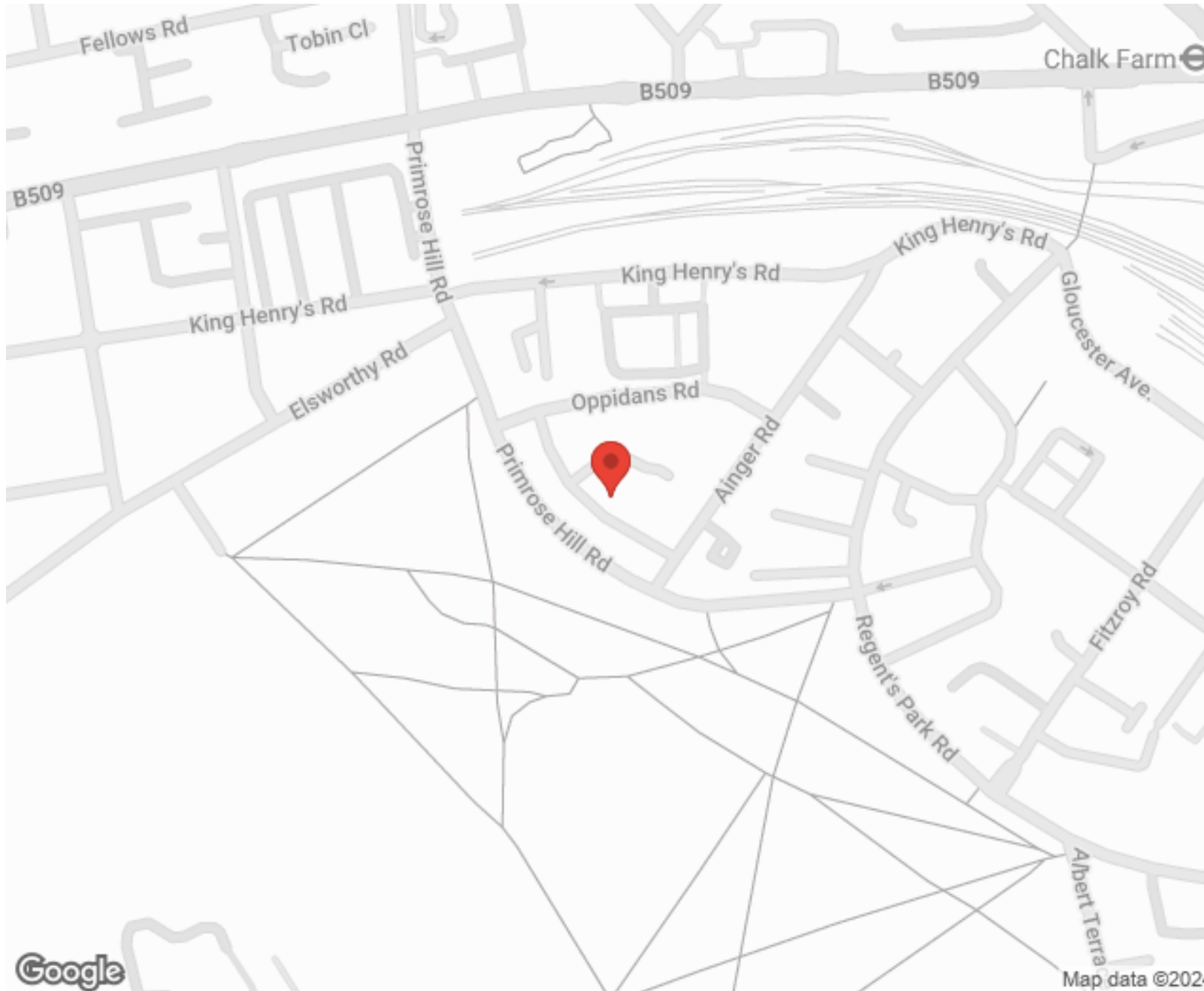
"I used Vita properties to find a flat recently and it was an overall professional, personalised and positive experience. Saira went the extra mile to accommodate to our needs and quick to help us whenever possible."



**MORE INFO, PICTURES,
CONTACT ON
OUR WEBSITE**



"Vita Properties is a very professional agency. My experience with them was incredible and the entire team was very helpful and kind throughout the renting process. I'd highly recommend!"



SCAN FOR MORE
GOOGLE REVIEWS



Google



4.9 Stars | 132 Reviews

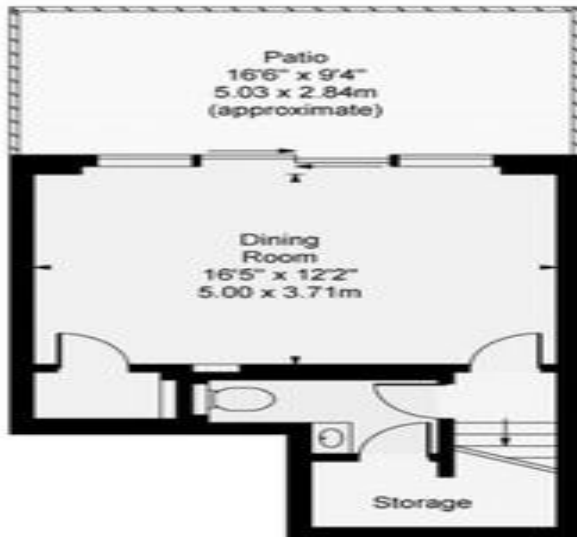
Find us on social media

 vitaproperties

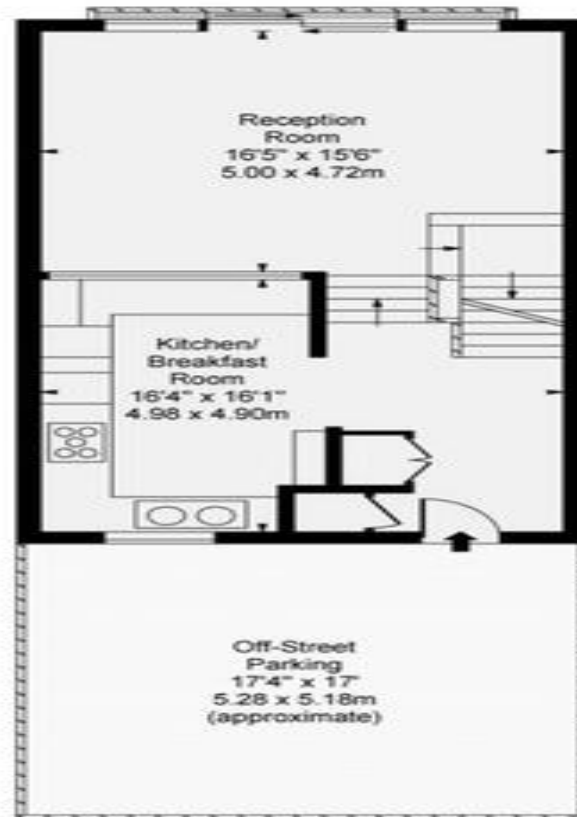
 VitaProperties

 VitaProperties

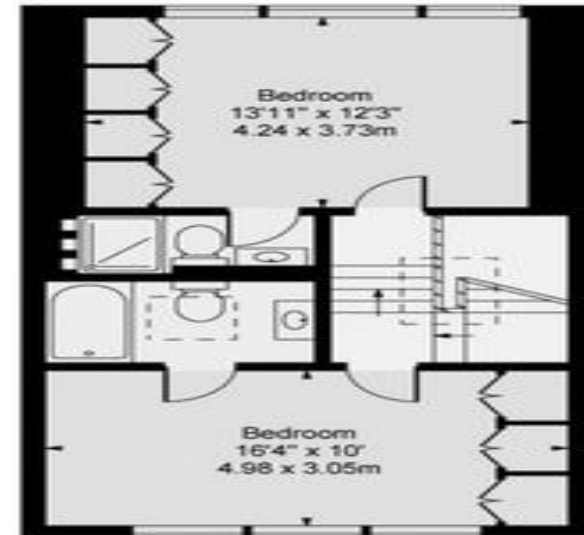
Meadowbank, NW3



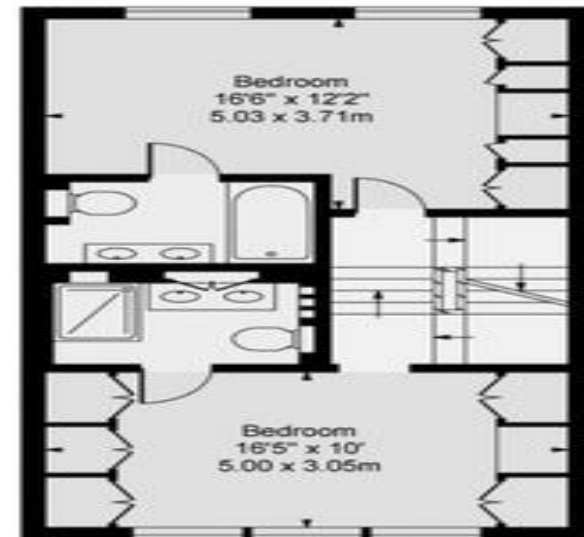
Lower Ground Floor



Ground Floor



Second Floor



First Floor

Approx Gross Internal Area 1900 Sq Ft - 176.51 Sq M

For Illustration Purposes Only - Not To Scale Floor Plan by www.nogaphotostudio.com Ref: No.23471

This floor plan should be used as a general outline for guidance only. Any intending purchaser or lessee should satisfy themselves by inspection, searches, enquiries and full survey as to the correctness of each statement. Any areas, measurements or distances quoted are approximate and should not be used to value a property or be the basis of any sale or let.