



Loudoun Road, St Johns Wood, London NW8 .| £595

- One Bed, One Bath
- Ultra Modern
- Moments to South Hampstead and Swiss Cottage transport links
- Managed

- Private Garden
- Available 16 November 2023

"Vita Properties have been tremendously helpful throughout the process of securing/renting my flat. Informative about the property, prompt communication, easy to use dashboard for sharing of information, and pleasant to work with. Highly recommend!"

Available 16 November 2023 - We are delighted to offer this contemporary one bedroom garden apartment set on the ground floor within a fabulous modern development. This exceptional property comprises fully fitted kitchen with Corrian worktops, open plan to a bright spacious reception, one double bedroom, fitted wardrobes, luxury modern bathroom. The property further benefits from a communal roof terrace, underfloor heating, smoked oak wood flooring throughout. conveniently located moments from South Hampstead and Swiss Cottage shops and restaurants as well as excellent and transport links.



Saira Ishfaq

✉ saira@vitaproperties.uk

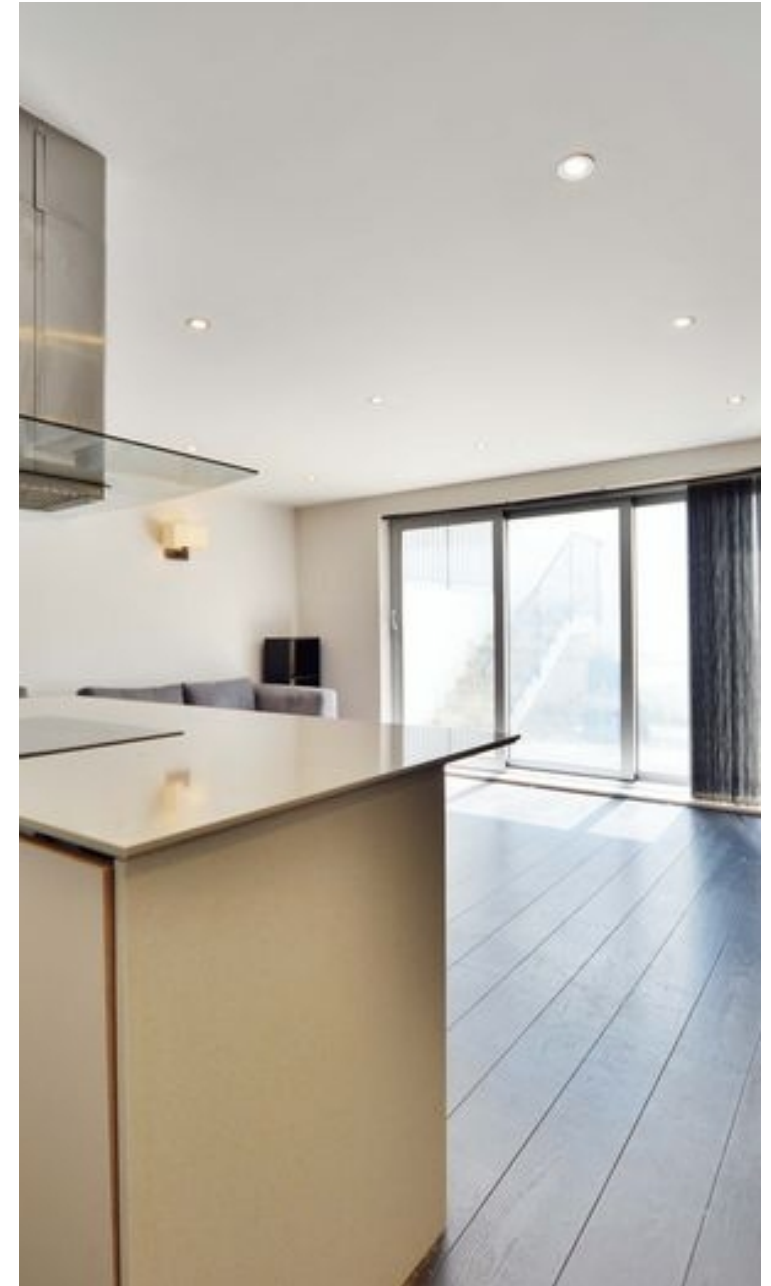
☎ +4475 5575 4510



🏠	Flat
🔑	Available to Let
🛏	x 1
🛋	x 1
🚿	x 1



"I was very impressed with Vita and their network of buyers. When the sale of my flat fell through (twice) they worked extremely hard to find new buyers in a difficult market - thank you!"



"Working with Vita properties has been a smooth experience! No complaints at all. Our letting agent, Diana has been fantastic and very helpful throughout the whole process. I would highly recommend both Vita properties and Diana."



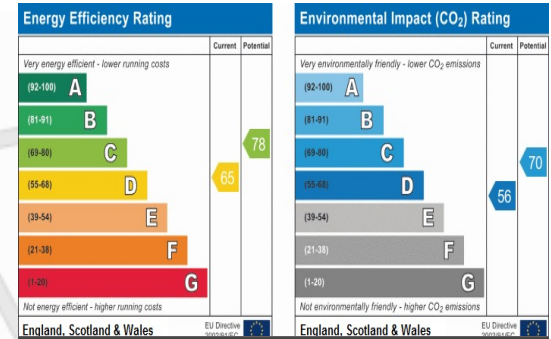
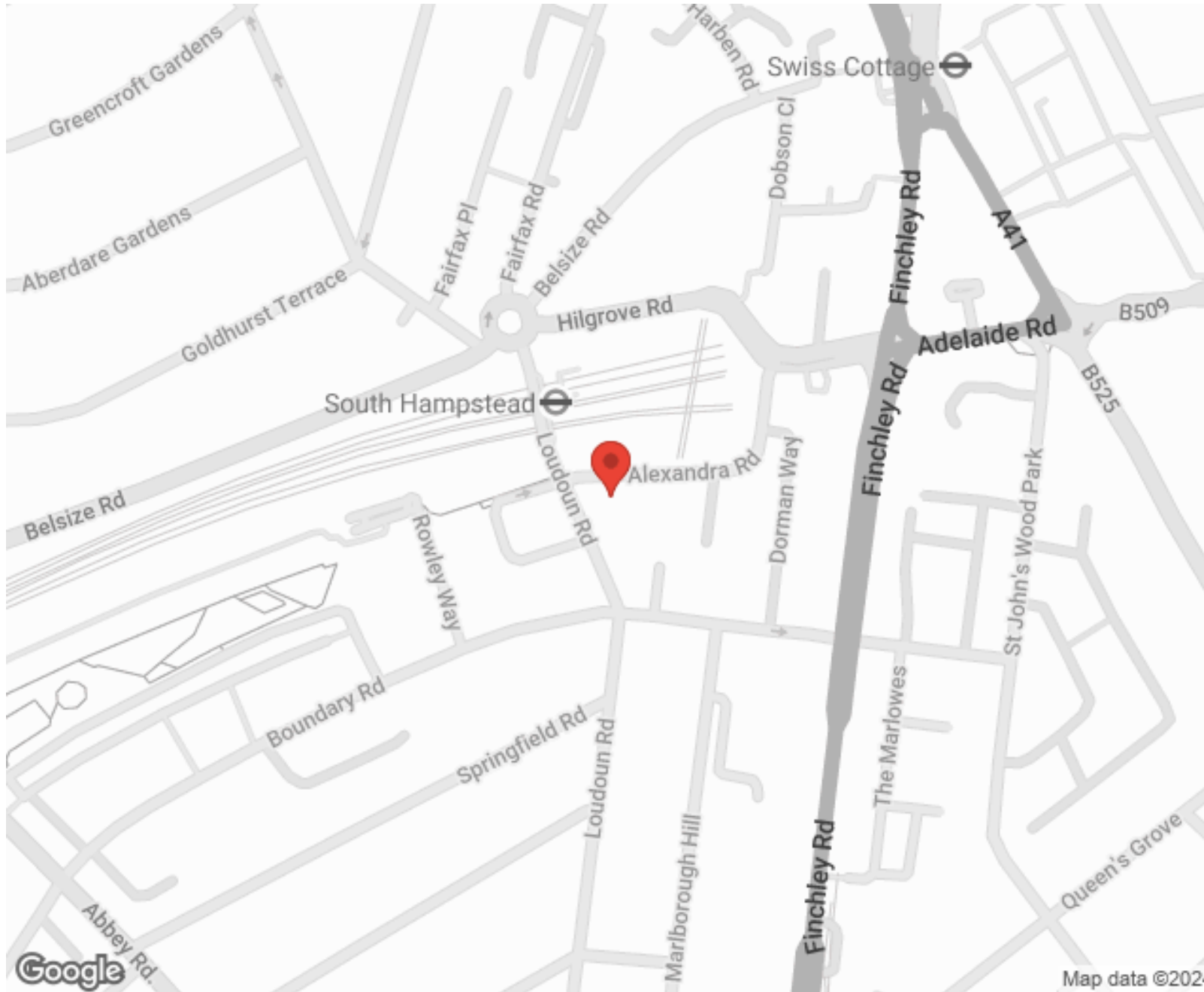
"I used Vita properties to find a flat recently and it was an overall professional, personalised and positive experience. Saira went the extra mile to accommodate to our needs and quick to help us whenever possible."



**MORE INFO, PICTURES,
CONTACT ON
OUR WEBSITE**



"Vita Properties is a very professional agency. My experience with them was incredible and the entire team was very helpful and kind throughout the renting process. I'd highly recommend!"



SCAN FOR MORE
GOOGLE REVIEWS






Google

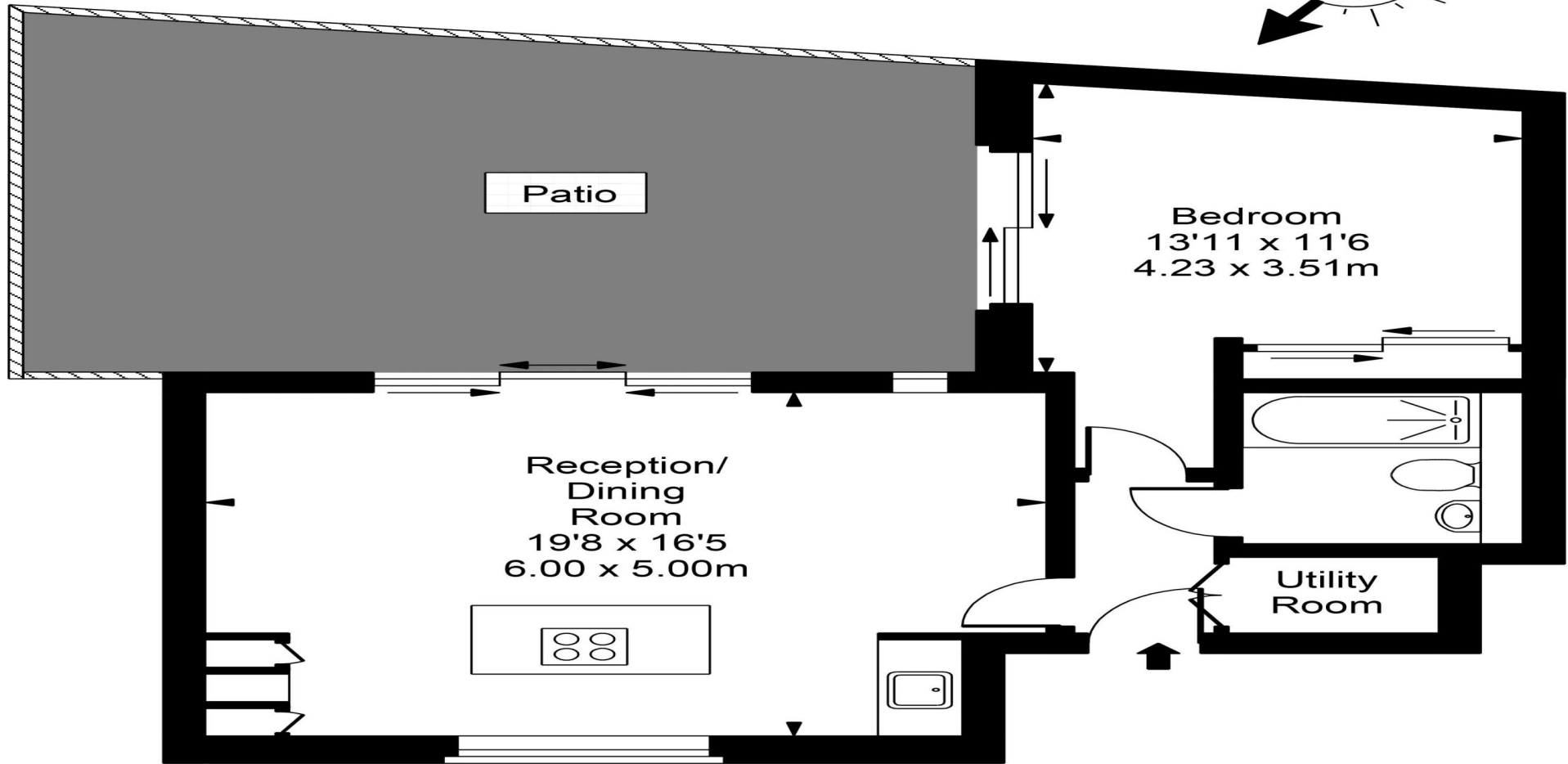
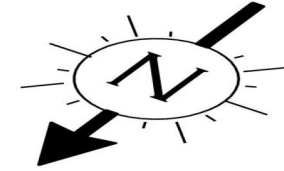


4.9 Stars | 132 Reviews

Find us on social media

-  vitaproperties
-  VitaProperties
-  VitaProperties

All Souls Church



Ground Floor



Approx Gross Internal Area **595 Sq Ft - 55.28 Sq M**

For Illustration Purposes Only - Not To Scale
Floor plan by www.creativeplanetlk.com