



## Belsize Place, Belsize Village, London, NW3 .| £700

- 3 double bedrooms - 3 bathrooms
- Large double volume reception
- Modern
- Located in the heart of Belsize Village

- Available 07 March 2017
- Council tax F - £1908 per annum

"Vita Properties have been tremendously helpful throughout the process of securing/renting my flat. Informative about the property, prompt communication, easy to use dashboard for sharing of information, and pleasant to work with. Highly recommend!"

Available 07 March 2017 - A Unique  
3 Bedroom, 3 Bathroom Apartment  
- Arranged Over First Floor - Bright  
Reception with Full Height Sash  
Windows - Semi Open Plan Modern  
Kitchen - Master Bedroom with  
Fitted Wardrobes - En Suite Luxury  
Bathroom - 2 Further Double  
Bedrooms and 2 Shower Rooms -  
Located in the Heart of Belsize  
Village - Easy Walking Distance to  
Belsize Park and Swiss Cottage  
Undergrounds - Offered  
Unfurnished



Oliver Kent

✉ [oliver.kent@vitaproperties.uk](mailto:oliver.kent@vitaproperties.uk)

☎ +4477 7274 0351

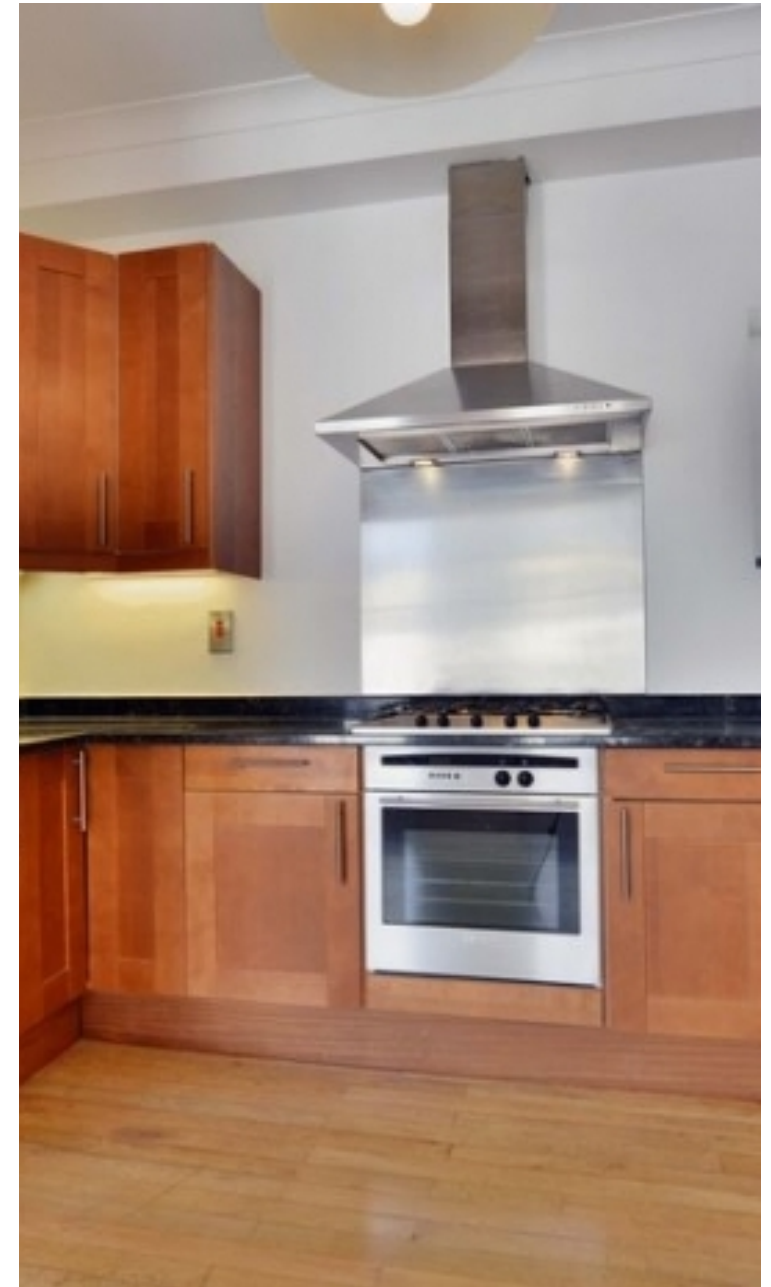


🏠	Flat
🔑	Available to Let
🛏	x 3
🛋	x 1
🚿	x 3



"I was very impressed with Vita and their network of buyers. When the sale of my flat fell through (twice) they worked extremely hard to find new buyers in a difficult market - thank you!"

---



"Working with Vita properties has been a smooth experience! No complaints at all. Our letting agent, Diana has been fantastic and very helpful throughout the whole process. I would highly recommend both Vita properties and Diana."

---



"I used Vita properties to find a flat recently and it was an overall professional, personalised and positive experience. Saira went the extra mile to accommodate to our needs and quick to help us whenever possible."

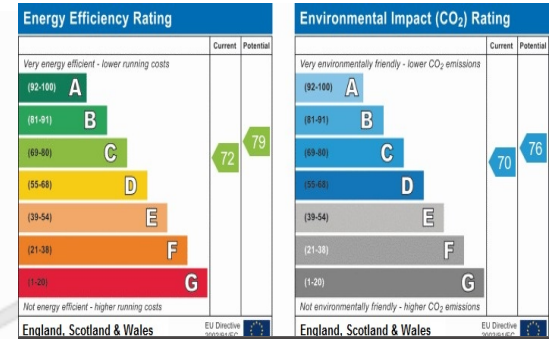
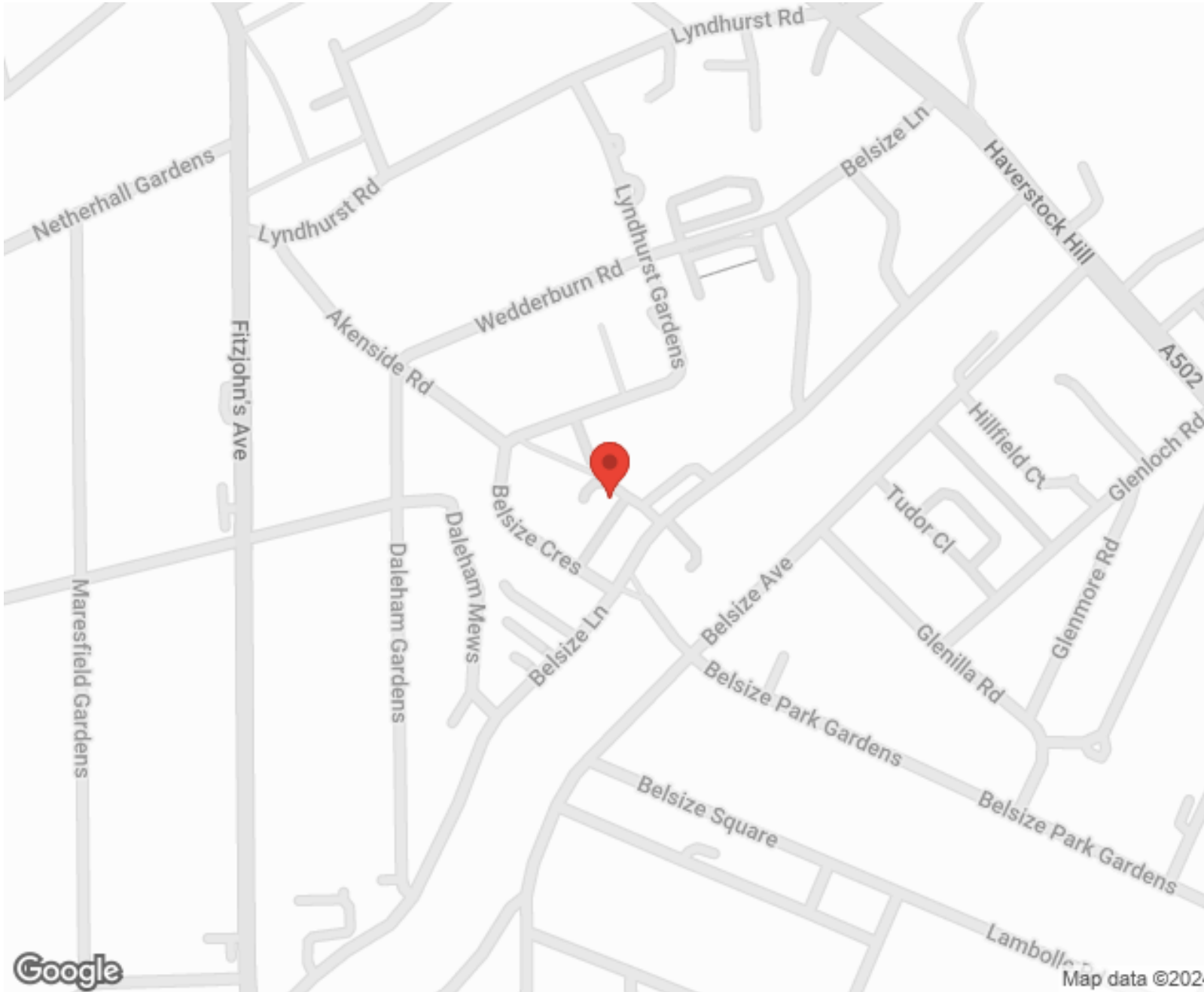
---



**MORE INFO, PICTURES,  
CONTACT ON  
OUR WEBSITE**



"Vita Properties is a very professional agency. My experience with them was incredible and the entire team was very helpful and kind throughout the renting process. I'd highly recommend!"



SCAN FOR MORE  
GOOGLE REVIEWS






Google

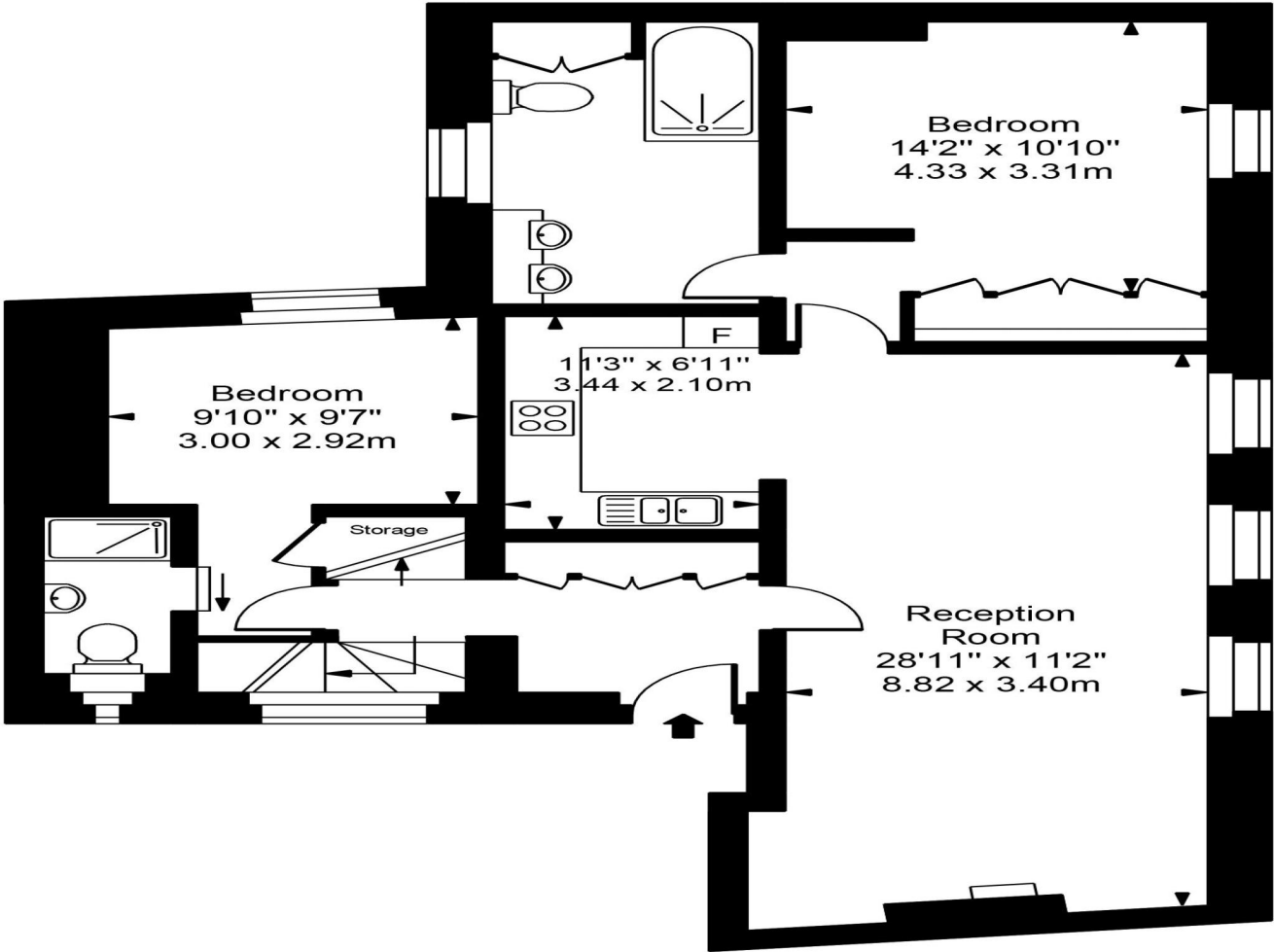


4.9 Stars | 132 Reviews

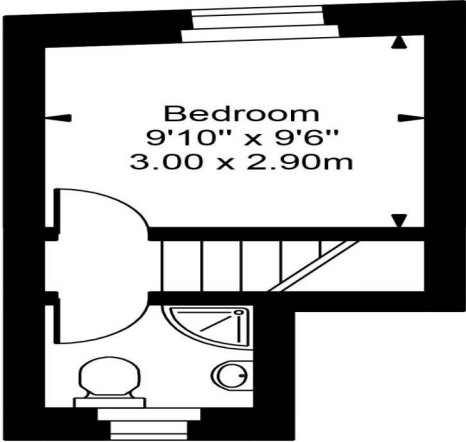
Find us on social media

-  vitaproperties
-  VitaProperties
-  VitaProperties

# Belsize Place



First Floor



Second Floor



Approx Gross Internal Area 1127 Sq Ft - 104.70 Sq M

For Illustration Purposes Only - Not To Scale  
Floor plan by [www.creativeplanetk.com](http://www.creativeplanetk.com)