



Harford Walk, Hampstead Garden Suburb, London, N2 .| £895

- Double aspect living room
- 5 Bedrooms
- Off street parking for 2 cars
- Private garden
- Quiet location
- Available 18th April
- Council tax - H - £2802 per annum

"Vita Properties have been tremendously helpful throughout the process of securing/renting my flat. Informative about the property, prompt communication, easy to use dashboard for sharing of information, and pleasant to work with. Highly recommend!"

Available 18th April is this fantastic 5 bedroomed detached family home arranged over 3 floors, set at the top of a very quiet cul de sac within 4 minutes walk of East Finchley tube station (northern line) and extensive shopping amenities. Featuring wood flooring throughout the house and comprising entrance hall, large through lounge/dining room, recently fitted white kitchen leading to a family/breakfast room, guest cloakroom, first floor comprises master bedroom with en suite bathroom, 2 further double bedrooms, family bathroom, single bedroom, 2nd floor comprises double bedroom and bathroom with a sizeable landing ideal for storage. There is a driveway to the front for 2 cars and to the rear there is a patio and large rear garden.

Unfurnished



Oliver Kent

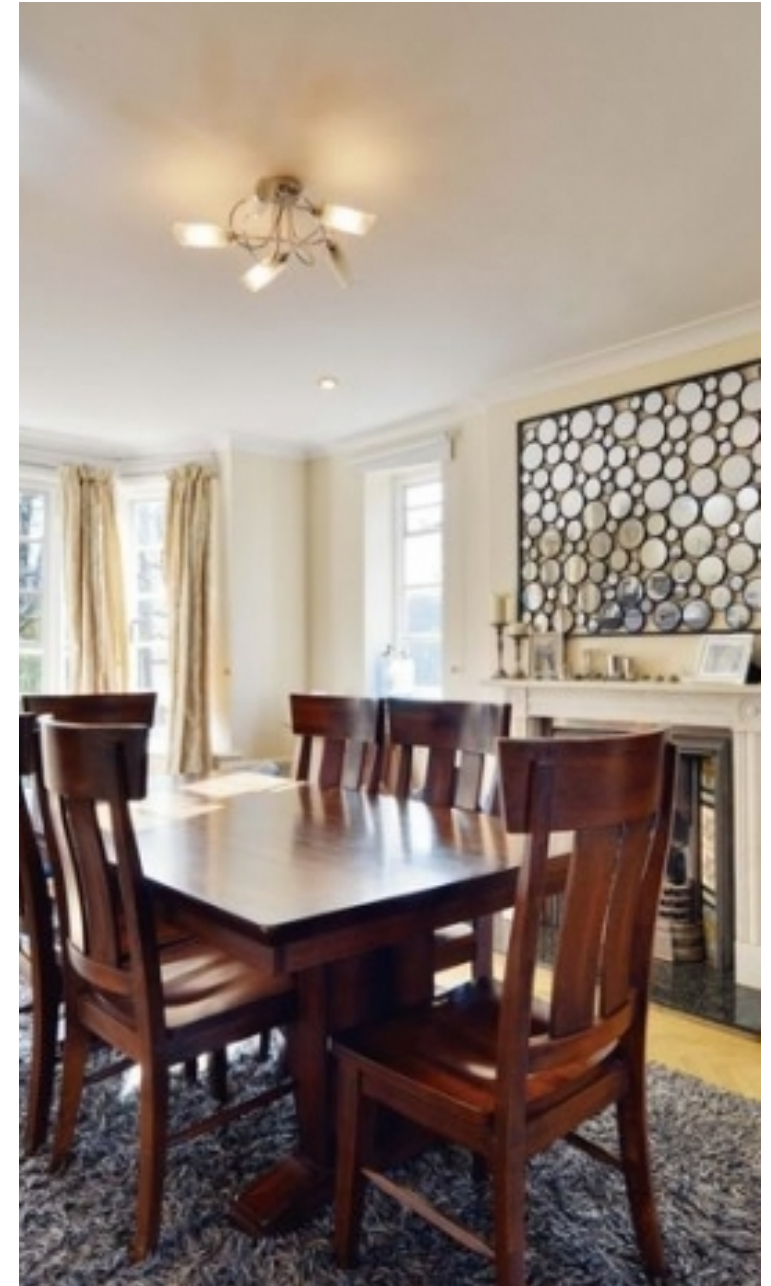
✉ oliver.kent@vitaproperties.uk
☎ +4477 7274 0351



🏠	House
🔑	Under Negotiation
🛏️	x 5+
🚿	x 2
🚗	x 3



"I was very impressed with Vita and their network of buyers. When the sale of my flat fell through (twice) they worked extremely hard to find new buyers in a difficult market - thank you!"



"Working with Vita properties has been a smooth experience! No complaints at all. Our letting agent, Diana has been fantastic and very helpful throughout the whole process. I would highly recommend both Vita properties and Diana."



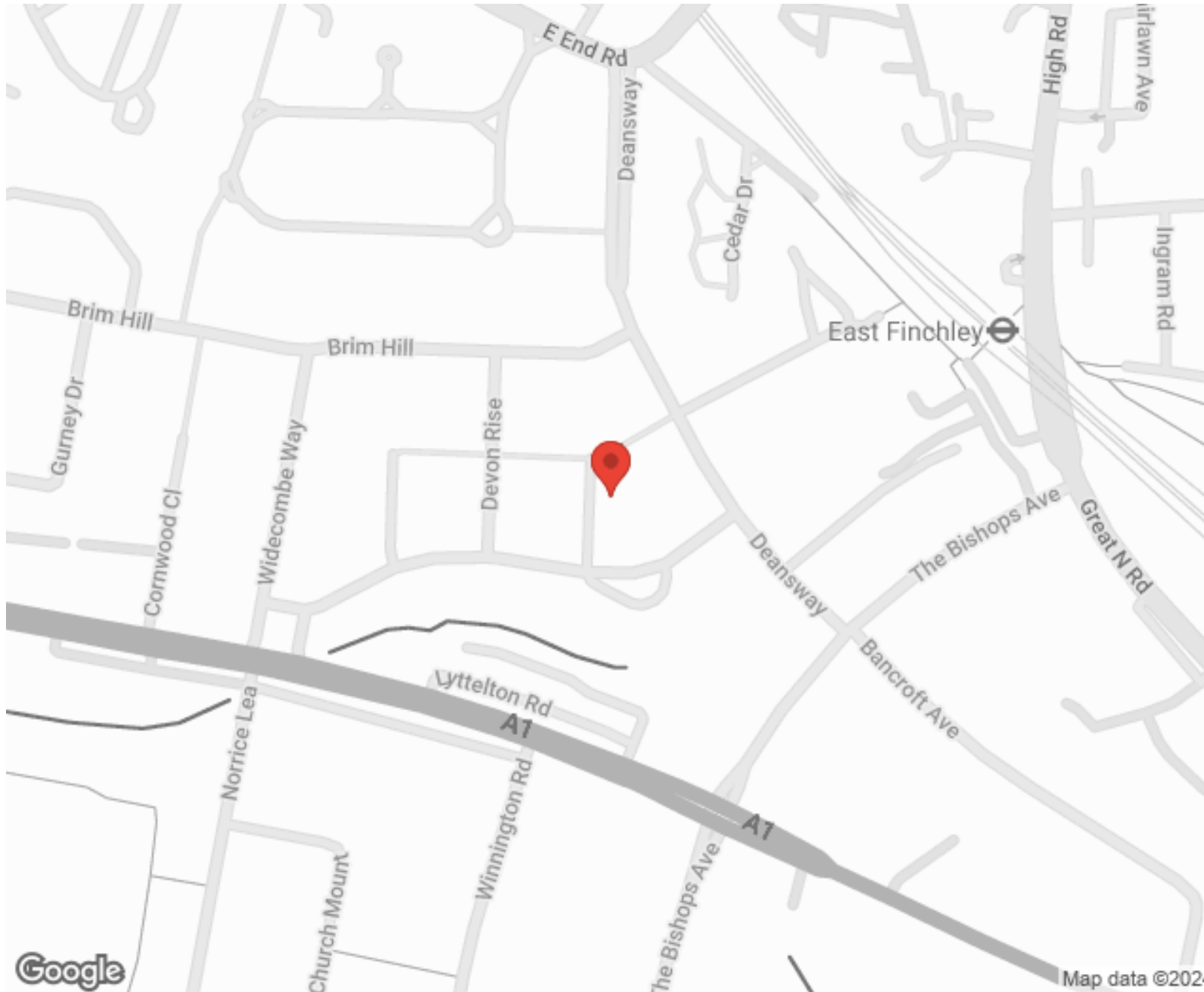
"I used Vita properties to find a flat recently and it was an overall professional, personalised and positive experience. Saira went the extra mile to accommodate to our needs and quick to help us whenever possible."



**MORE INFO, PICTURES,
CONTACT ON
OUR WEBSITE**



"Vita Properties is a very professional agency. My experience with them was incredible and the entire team was very helpful and kind throughout the renting process. I'd highly recommend!"



SCAN FOR MORE
GOOGLE REVIEWS



Google




4.9 Stars | 132 Reviews

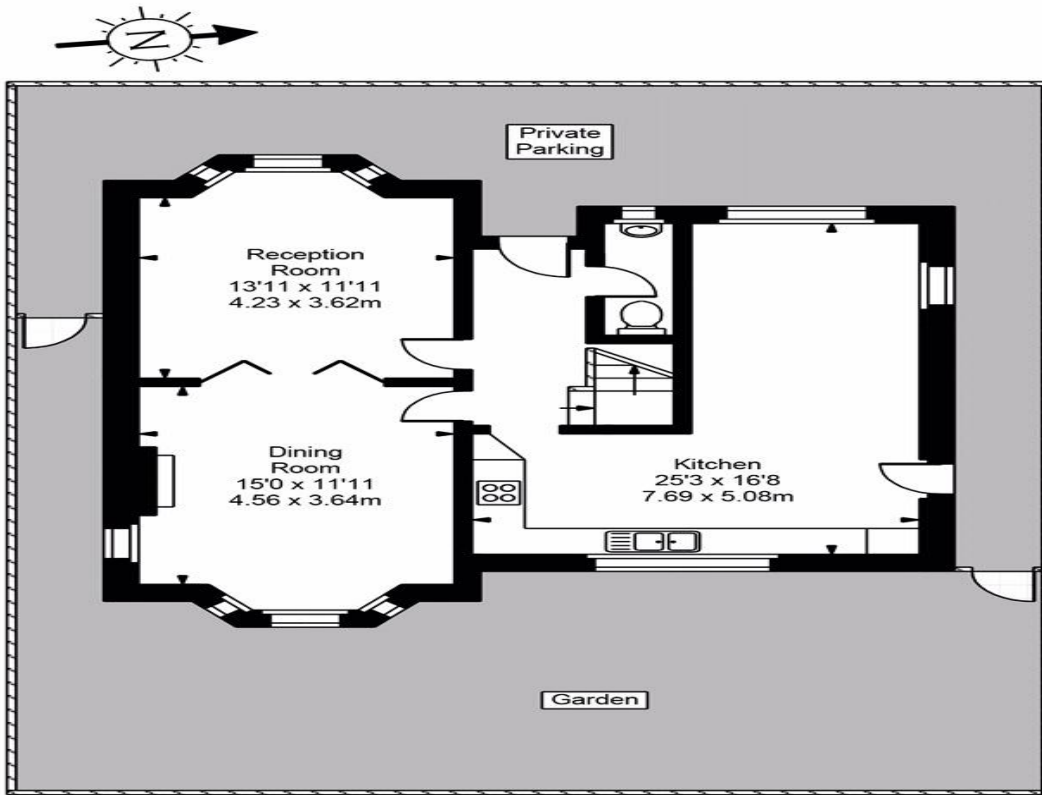
Find us on social media

 vitaproperties

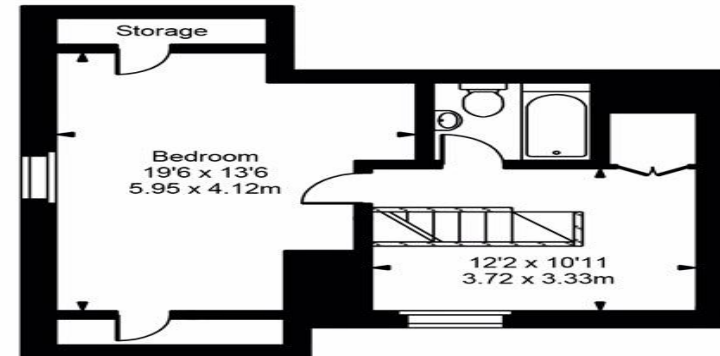
 VitaProperties

 VitaProperties

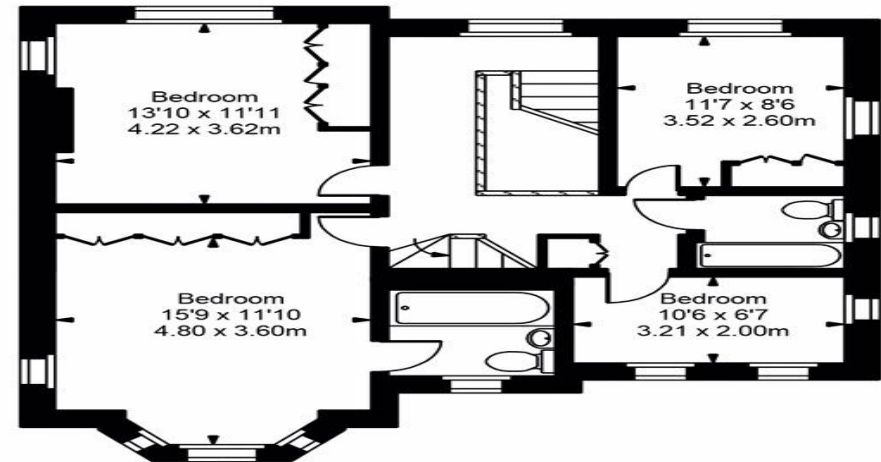
Harford Walk



Ground Floor



Second Floor



First Floor



Approx Gross Internal Area 2082 Sq Ft - 193.38 Sq M

For Illustration Purposes Only - Not To Scale
Floor plan by www.creativeplanettk.com