



Elgin Avenue, Maida Vale, London, W9 .| £465

- Lift
- Pet Friendly
- Private Balcony
- Two double bedrooms

- Close to Maida Vale Station
- Available immediately

"Vita Properties have been tremendously helpful throughout the process of securing/renting my flat. Informative about the property, prompt communication, easy to use dashboard for sharing of information, and pleasant to work with. Highly recommend!"

Available immediately is this)
beautifully presented, two double
bedroom first floor flat set within
this newly refurbished converted
block. The property benefits from a
bright and airy reception room
boasting access to a private
balcony, separate fitted kitchen,
master bedroom with access to the
shower room and second double
bedroom. Available on an
unfurnished basis, located in the
heart of Maida Vale Westside Court
is a great W9 location and only a
short walk to Paddington Recreation
Ground, the cafes and bars of
Lauderdale Road and transport links
of Elgin Avenue (Bakerloo Line).



Oliver Kent

✉ oliver.kent@vitaproperties.uk

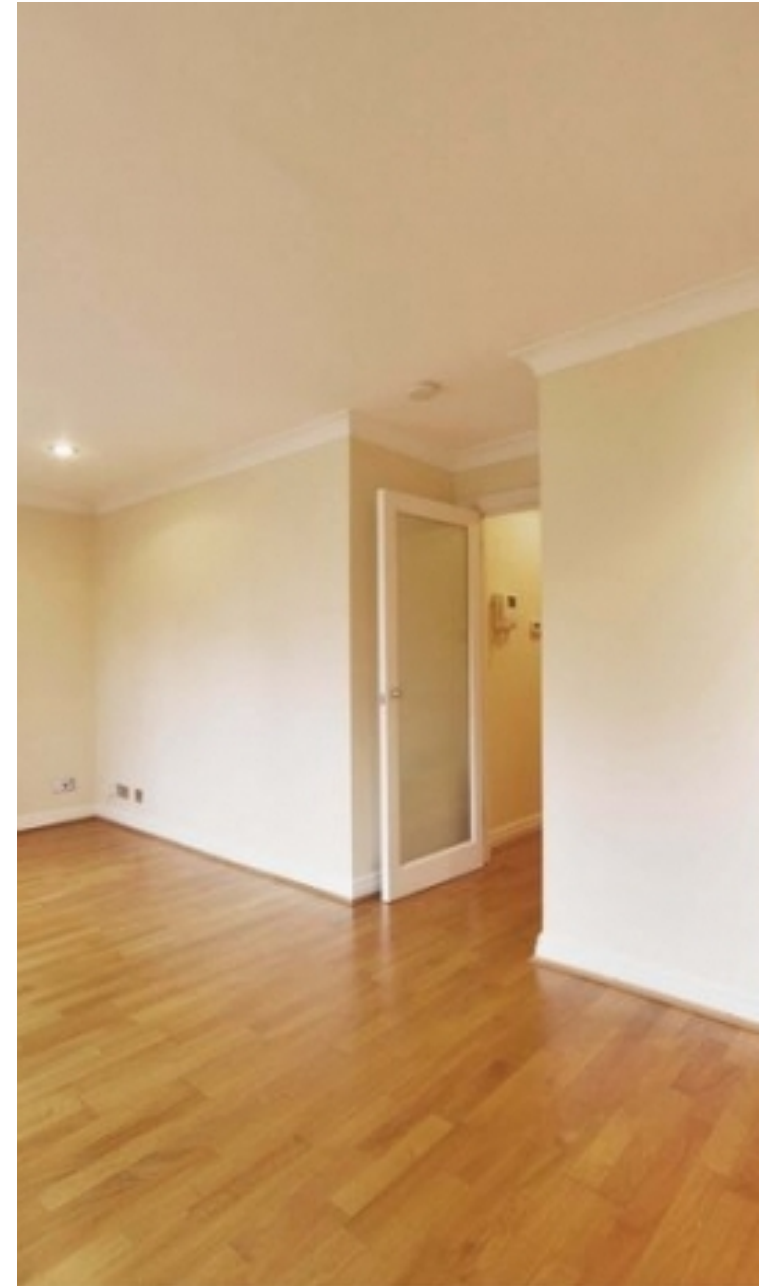
☎ +4477 7274 0351



🏠	Flat
🔑	Available to Let
🛏️	x 2
🛋️	x 1
🚿	x 1



"I was very impressed with Vita and their network of buyers. When the sale of my flat fell through (twice) they worked extremely hard to find new buyers in a difficult market - thank you!"



"Working with Vita properties has been a smooth experience! No complaints at all. Our letting agent, Diana has been fantastic and very helpful throughout the whole process. I would highly recommend both Vita properties and Diana."



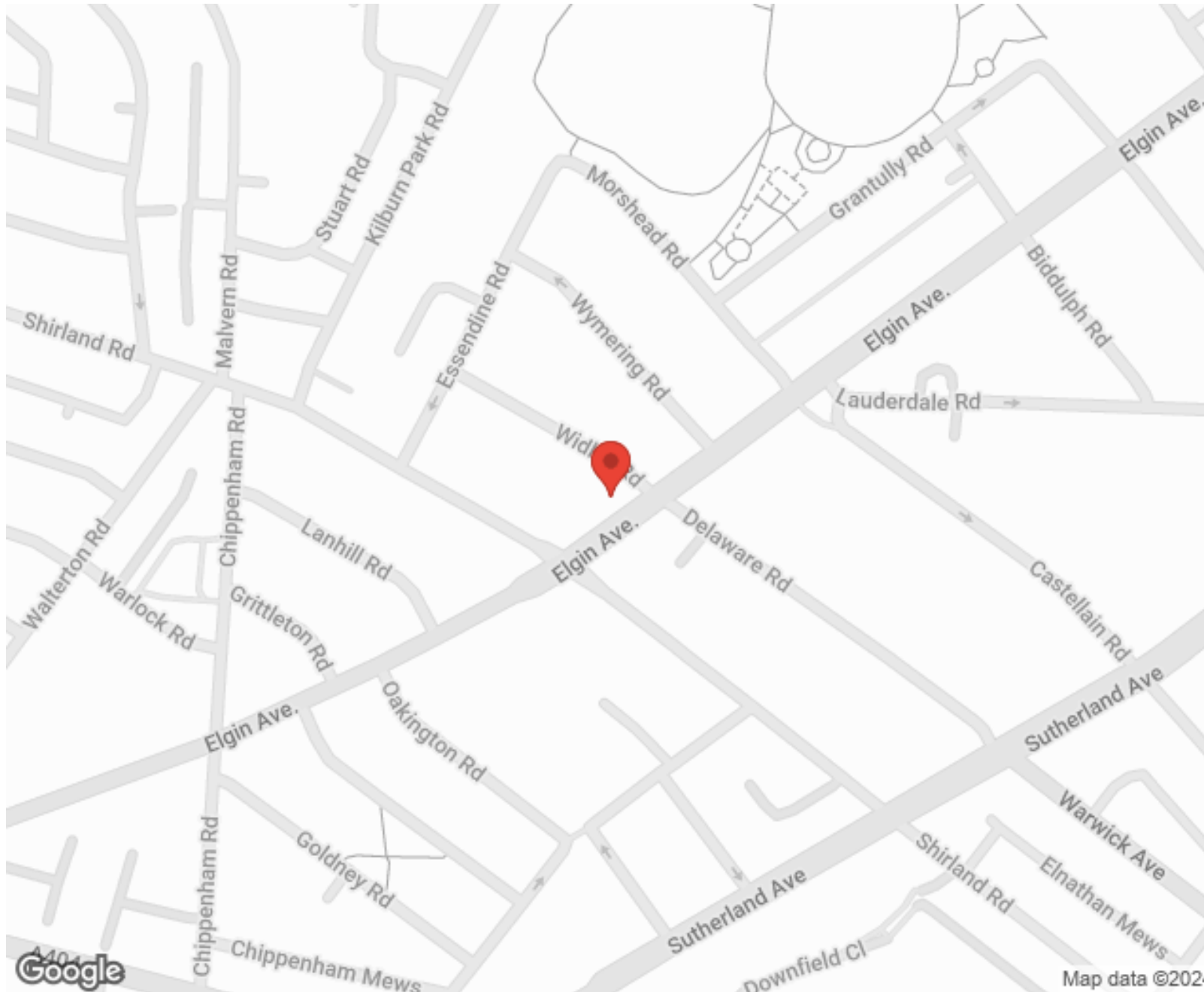
"I used Vita properties to find a flat recently and it was an overall professional, personalised and positive experience. Saira went the extra mile to accommodate to our needs and quick to help us whenever possible."



**MORE INFO, PICTURES,
CONTACT ON
OUR WEBSITE**



"Vita Properties is a very professional agency. My experience with them was incredible and the entire team was very helpful and kind throughout the renting process. I'd highly recommend!"



SCAN FOR MORE
GOOGLE REVIEWS






Google

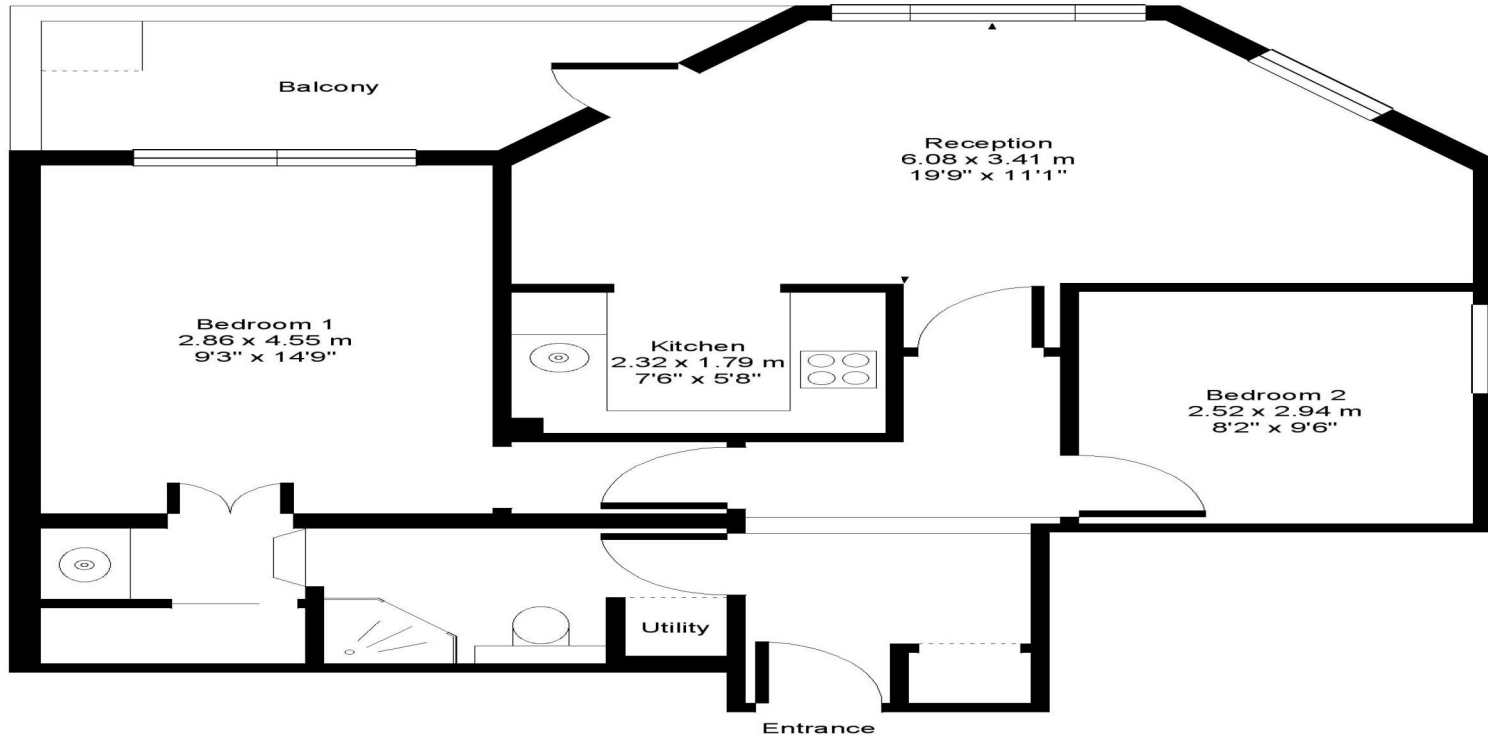


4.9 Stars | 132 Reviews

Find us on social media

-  vitaproperties
-  VitaProperties
-  VitaProperties

Westside Court
Elgin Avenue, W9



FIRST FLOOR

Approx. Gross Floor Area = 62 sq.meters • 672 sq.feet

For illustrative purposes only. Measured and drawn in accordance to RICS guidelines. Not drawn to scale.
Prepared by swan-photography.co.ukv