



Priory Terrace, South Hampstead, London, NW6 .| £395

- Modern
- Two double bedrooms
- Fitted kitchen
- Spacious reception

- Bright and airy
- Available 21st May

"Vita Properties have been tremendously helpful throughout the process of securing/renting my flat. Informative about the property, prompt communication, easy to use dashboard for sharing of information, and pleasant to work with. Highly recommend!"

Available 21st May is this spacious 2 Bedroom Apartment - 1st Floor Flat - Bright 17'1 Reception Room with Wooden Floors - Semi Open Plan Kitchen - 14' Master Bedroom with Fitted Storage - 2nd Small Double Bedroom - Contemporary Bathroom - Within Stucco Fronted Period House - Very Well Presented Accommodation - Quiet Residential South Hampstead Street - Superb Local Transport Links and Amenities -Furnished - Council Tax: Camden Band D



Oliver Kent

✉ oliver.kent@vitaproperties.uk

☎ +4477 7274 0351



- 🏠 Flat
- 🔑 Under Negotiation
- 🛏 x 2
- 🚿 x 1
- 🚻 x 1

"I was very impressed with Vita and their network of buyers. When the sale of my flat fell through (twice) they worked extremely hard to find new buyers in a difficult market - thank you!"



"Working with Vita properties has been a smooth experience! No complaints at all. Our letting agent, Diana has been fantastic and very helpful throughout the whole process. I would highly recommend both Vita properties and Diana."



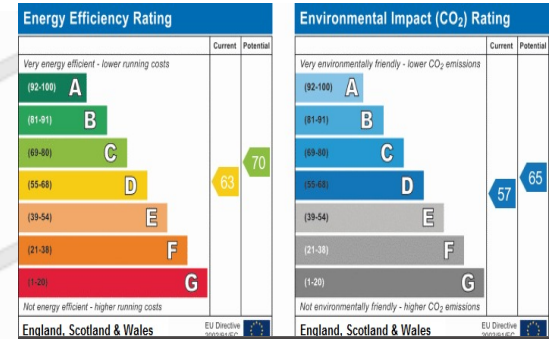
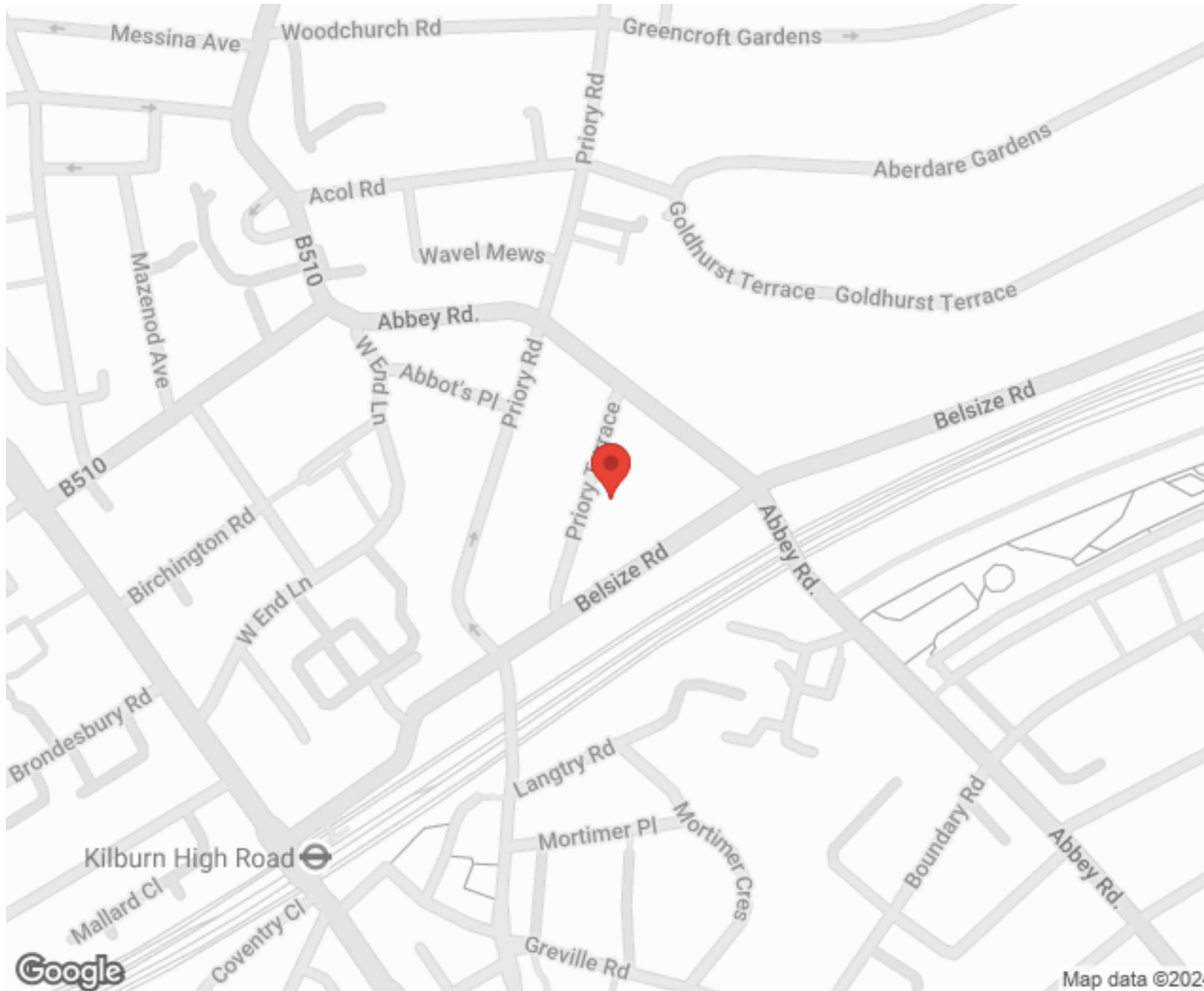
"I used Vita properties to find a flat recently and it was an overall professional, personalised and positive experience. Saira went the extra mile to accommodate to our needs and quick to help us whenever possible."



**MORE INFO, PICTURES,
CONTACT ON
OUR WEBSITE**



"Vita Properties is a very professional agency. My experience with them was incredible and the entire team was very helpful and kind throughout the renting process. I'd highly recommend!"



SCAN FOR MORE
GOOGLE REVIEWS






Google

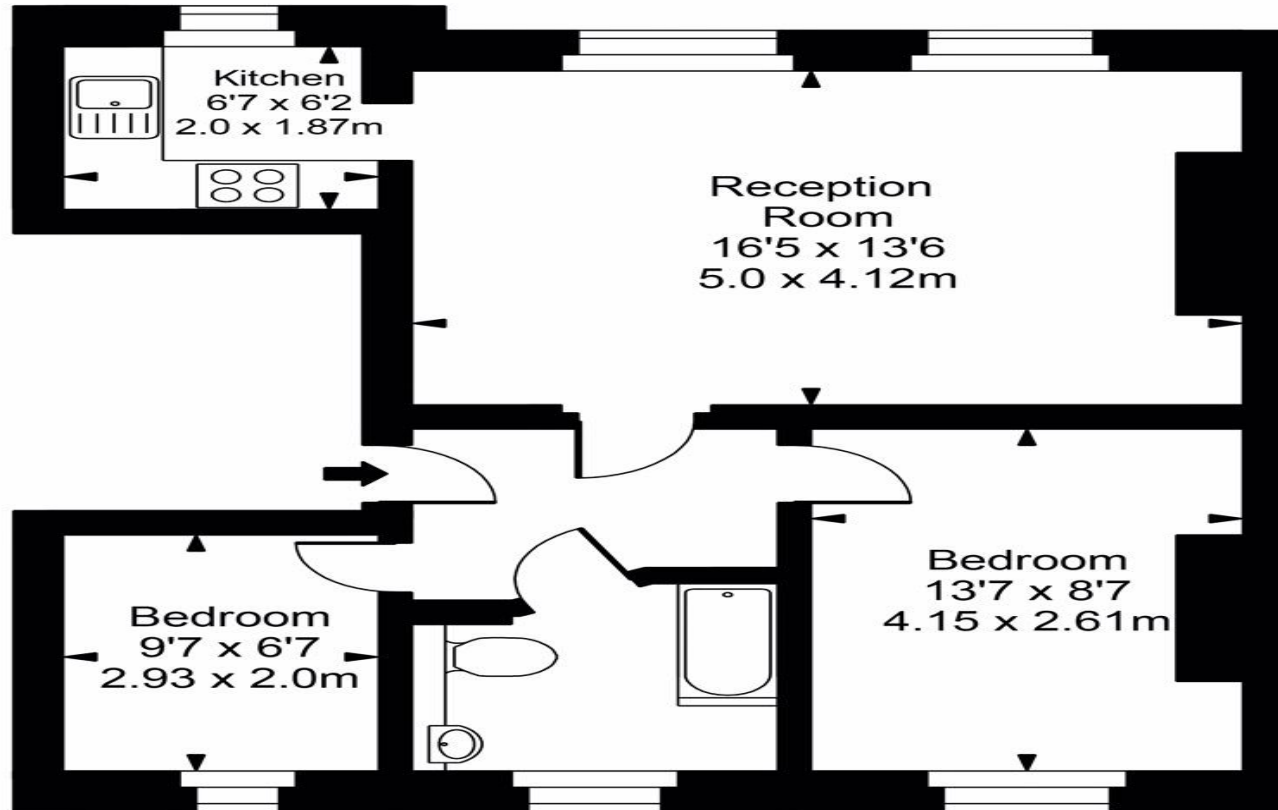
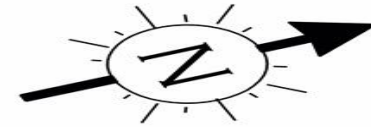


4.9 Stars | 132 Reviews

Find us on social media

-  vitaproperties
-  VitaProperties
-  VitaProperties

Priory Terrace



First Floor



Approx Gross Internal Area **573 Sq Ft - 53.20 Sq M**

For Illustration Purposes Only - Not To Scale
Floor plan by www.creativeplanetlk.com