



Randolph Avenue, Maida Vale, London, W9 .| £495

- Amazing storage
- Wine fridge
- Two double bedrooms
- Brand new

- Available immediately
- Council tax - D - £678 per annum
- Furnished

"Vita Properties have been tremendously helpful throughout the process of securing/renting my flat. Informative about the property, prompt communication, easy to use dashboard for sharing of information, and pleasant to work with. Highly recommend!"

Available immediately is this fully modernised 2 double bedroom top floor apartment located on Randolph Avenue seconds from Maida Vale tube and easy reach of a superb selection of shops, bars & restaurants in Maida Vale. In addition, it is close to the green open spaces of Paddington Recreation Ground and the pretty canal walks of Little Venice.

Offered furnished and has an abundance of natural light and clever storage spaces



Oliver Kent

✉ oliver.kent@vitaproperties.uk

☎ +4477 7274 0351



🏠	Flat
🔑	Available to Let
🛏️	x 2
🛋️	x 1
🚿	x 1



"I was very impressed with Vita and their network of buyers. When the sale of my flat fell through (twice) they worked extremely hard to find new buyers in a difficult market - thank you!"



"Working with Vita properties has been a smooth experience! No complaints at all. Our letting agent, Diana has been fantastic and very helpful throughout the whole process. I would highly recommend both Vita properties and Diana."



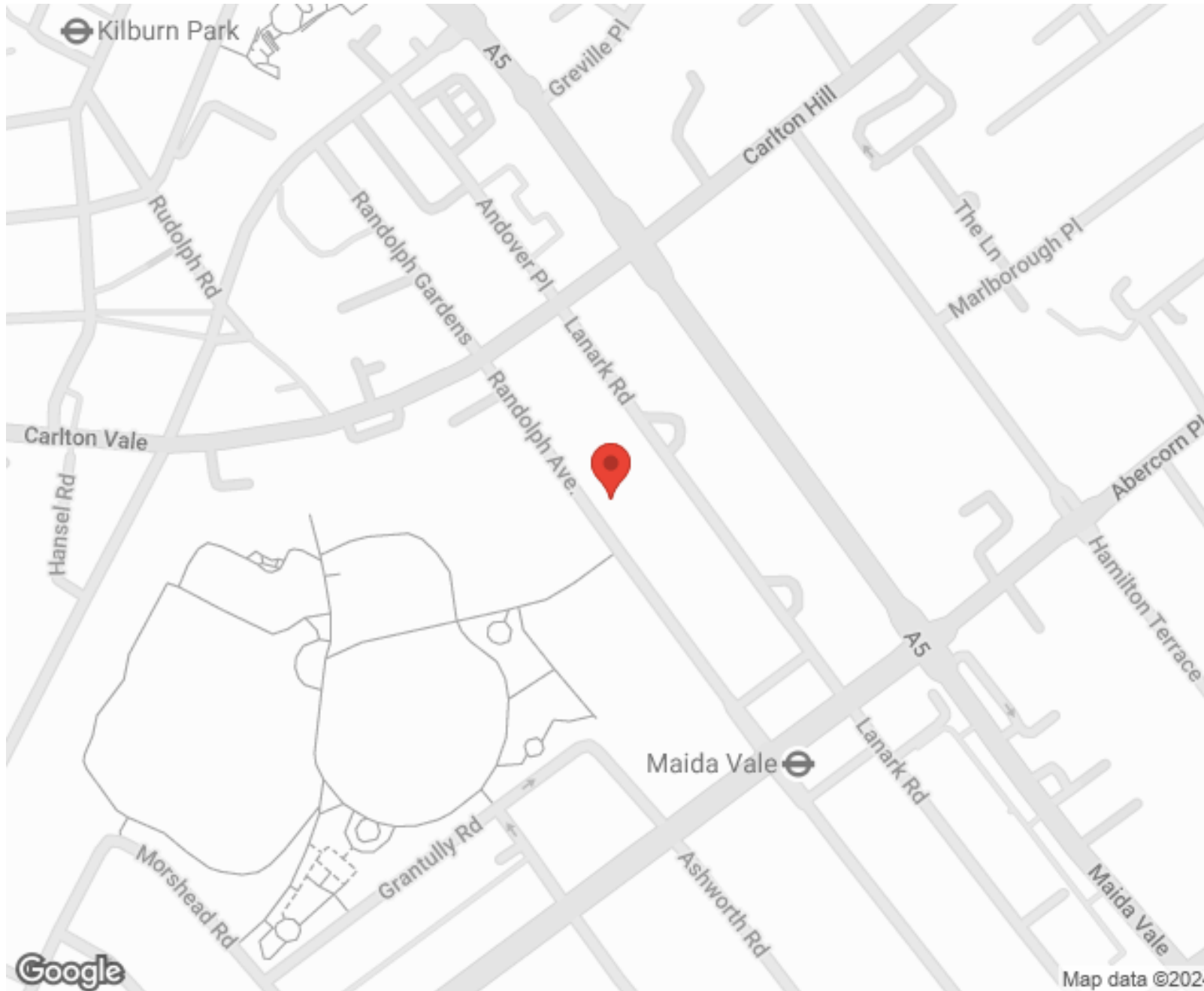
"I used Vita properties to find a flat recently and it was an overall professional, personalised and positive experience. Saira went the extra mile to accommodate to our needs and quick to help us whenever possible."



**MORE INFO, PICTURES,
CONTACT ON
OUR WEBSITE**



"Vita Properties is a very professional agency. My experience with them was incredible and the entire team was very helpful and kind throughout the renting process. I'd highly recommend!"



SCAN FOR MORE
GOOGLE REVIEWS






Google

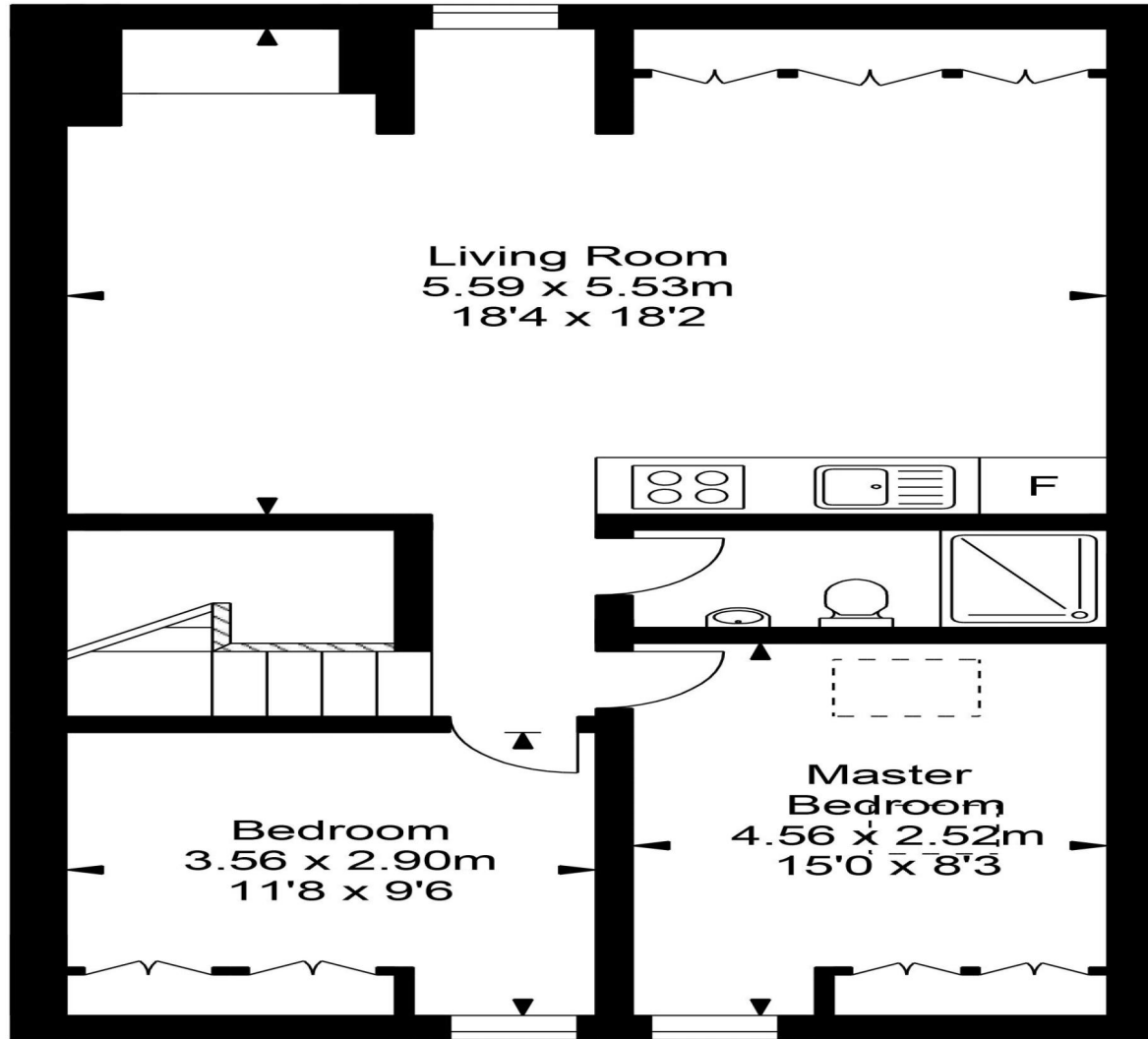
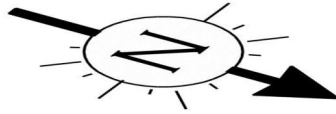


4.9 Stars | 132 Reviews

Find us on social media

-  vitaproperties
-  VitaProperties
-  VitaProperties

Randolph Avenue W9



Approx Gross Area - 630 SqFt - 58.6 SqM

For Illustration purposes only - Not to scale.