



Woods Mews, Mayfair, London, W1K .| £1,350

- Duplex
- Private patio
- Modern finish
- Available immediately

- Two Bathrooms - Two Bathroom
- Council tax - G - £1130 per annum

"Vita Properties have been tremendously helpful throughout the process of securing/renting my flat. Informative about the property, prompt communication, easy to use dashboard for sharing of information, and pleasant to work with. Highly recommend!"

Available immediately is this stunning newly constructed and refurbished two bedroom two bathroom residence set in the Heart of Mayfair between Grosvenor Square and Park Lane. This elegant maisonette offers an exquisite interior, beautifully furnished and fitted to the highest standard, and boasts marble bathrooms, fully fitted kitchen with top of the range appliances and have been furnished to satisfy the demands of the most discerning of tenants.



Oliver Kent

✉ oliver.kent@vitaproperties.uk

☎ +4477 7274 0351



🏠	Flat
🔑	Available to Let
🛏	x 2
🛋	x 1
🚿	x 2



"I was very impressed with Vita and their network of buyers. When the sale of my flat fell through (twice) they worked extremely hard to find new buyers in a difficult market - thank you!"



"Working with Vita properties has been a smooth experience! No complaints at all. Our letting agent, Diana has been fantastic and very helpful throughout the whole process. I would highly recommend both Vita properties and Diana."



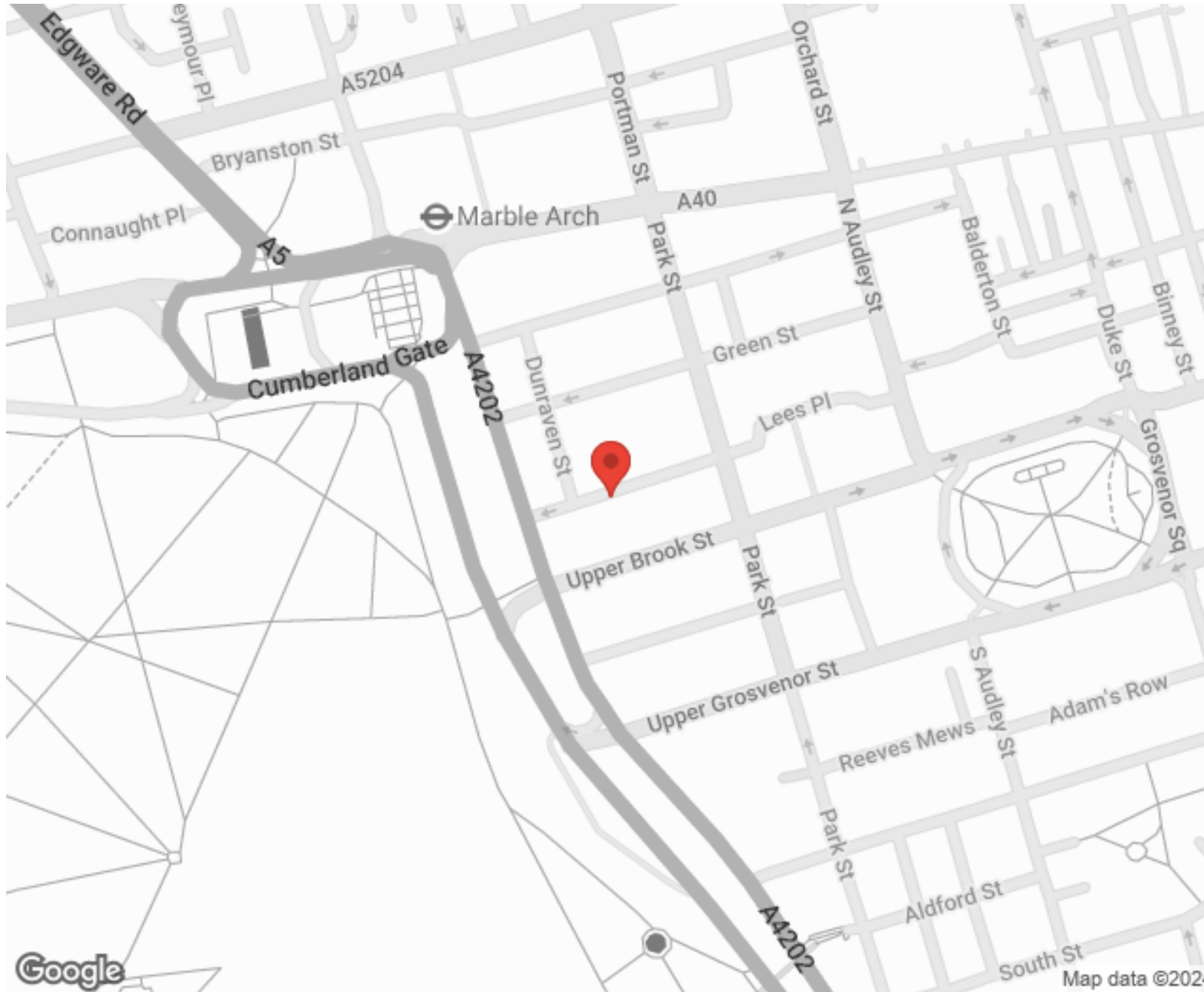
"I used Vita properties to find a flat recently and it was an overall professional, personalised and positive experience. Saira went the extra mile to accommodate to our needs and quick to help us whenever possible."



**MORE INFO, PICTURES,
CONTACT ON
OUR WEBSITE**



"Vita Properties is a very professional agency. My experience with them was incredible and the entire team was very helpful and kind throughout the renting process. I'd highly recommend!"



SCAN FOR MORE
GOOGLE REVIEWS






Google

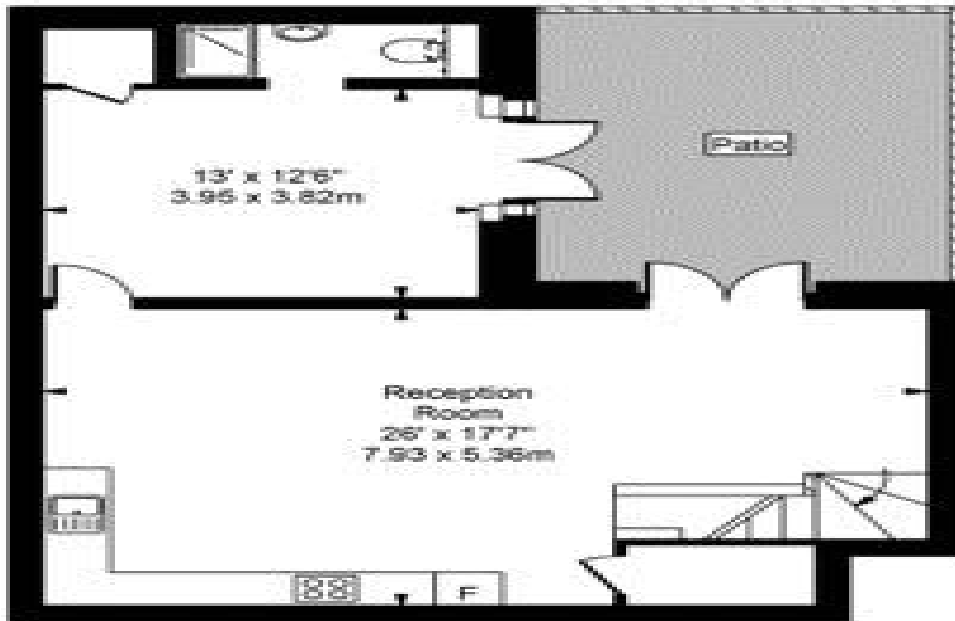


4.9 Stars | 132 Reviews

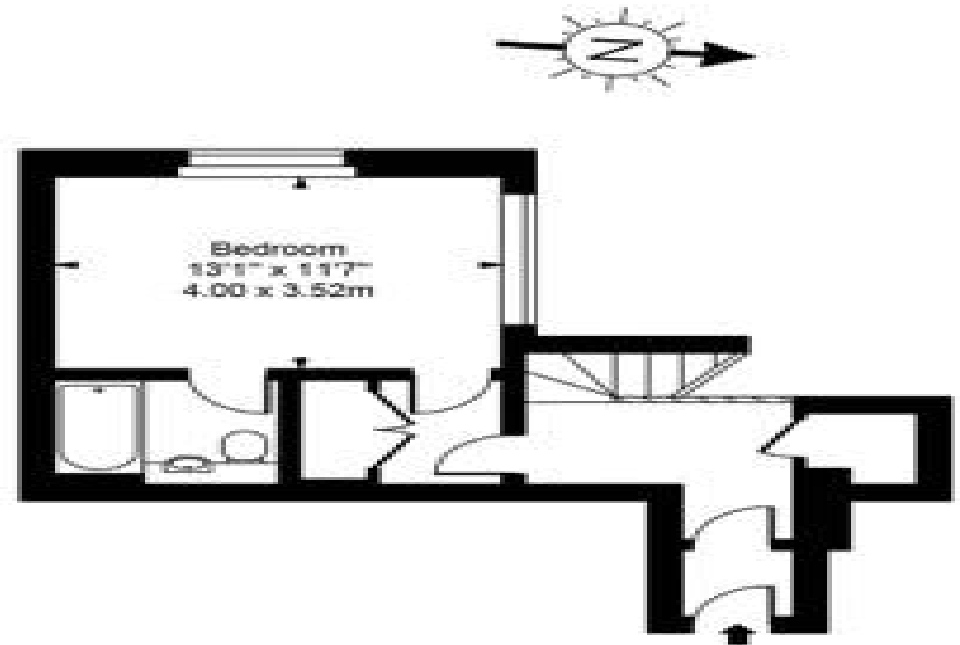
Find us on social media

-  vitaproperties
-  VitaProperties
-  VitaProperties

Wood Mews



Lower Ground Floor



Ground Floor



Approx Gross Internal Area **1008 Sq Ft - 93.64 Sq M**

For Illustration Purposes Only - Not To Scale
Floor plan by www.creativeplanetuk.com