



Woods Mews, Mayfair, London, W1K .| £1,300

- Furnished
- Located in the heart of Mayfair
- Bright and Spacious
- Available on the 20th March

- Lift
- Council tax - H - £1356 per annum

"Vita Properties have been tremendously helpful throughout the process of securing/renting my flat. Informative about the property, prompt communication, easy to use dashboard for sharing of information, and pleasant to work with. Highly recommend!"

Available on the 20th March and located in a mews between Park Street and Park Lane is this bright, recently refurbished and interior designed apartment of c. 1145 sq. ft apartment situated on the 2nd floor of this well maintained block with lift in this charming mews in Mayfair. The property benefits from wood flooring a large l-shaped reception/dining room and south facing terrace. Reception/dining room, kitchen, 2 double bedrooms, 2 bathrooms.

Offered Furnished



Oliver Kent

✉ oliver.kent@vitaproperties.uk
☎ +4477 7274 0351



🏠 Flat
🔑 Available
to Let
🛏 x 2
🛋 x 1
🚿 x 2



"I was very impressed with Vita and their network of buyers. When the sale of my flat fell through (twice) they worked extremely hard to find new buyers in a difficult market - thank you!"



"Working with Vita properties has been a smooth experience! No complaints at all. Our letting agent, Diana has been fantastic and very helpful throughout the whole process. I would highly recommend both Vita properties and Diana."



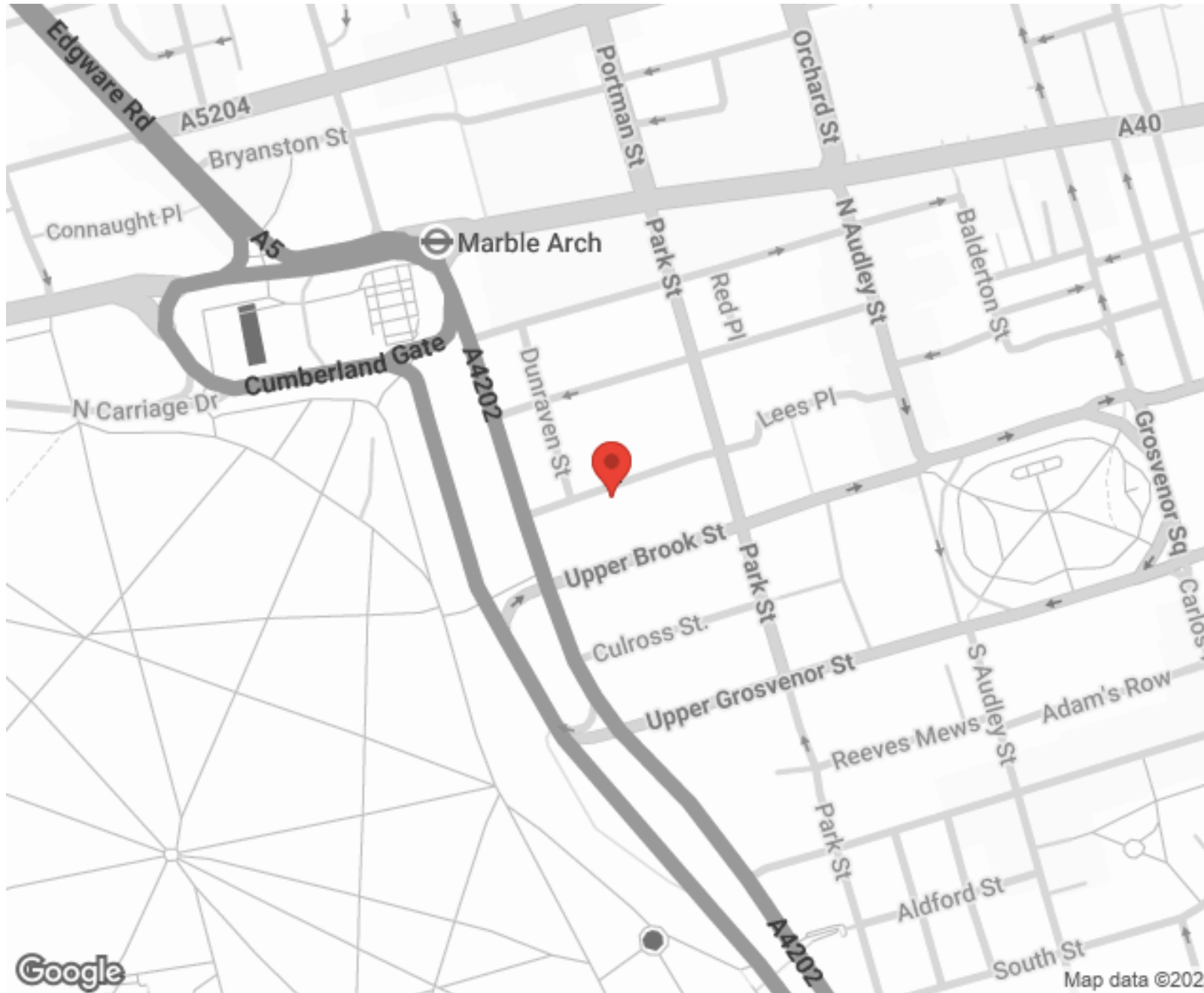
"I used Vita properties to find a flat recently and it was an overall professional, personalised and positive experience. Saira went the extra mile to accommodate to our needs and quick to help us whenever possible."



MORE INFO, PICTURES,
CONTACT ON
OUR WEBSITE



"Vita Properties is a very professional agency. My experience with them was incredible and the entire team was very helpful and kind throughout the renting process. I'd highly recommend!"



SCAN FOR MORE
GOOGLE REVIEWS




Google




4.9 Stars | 132 Reviews

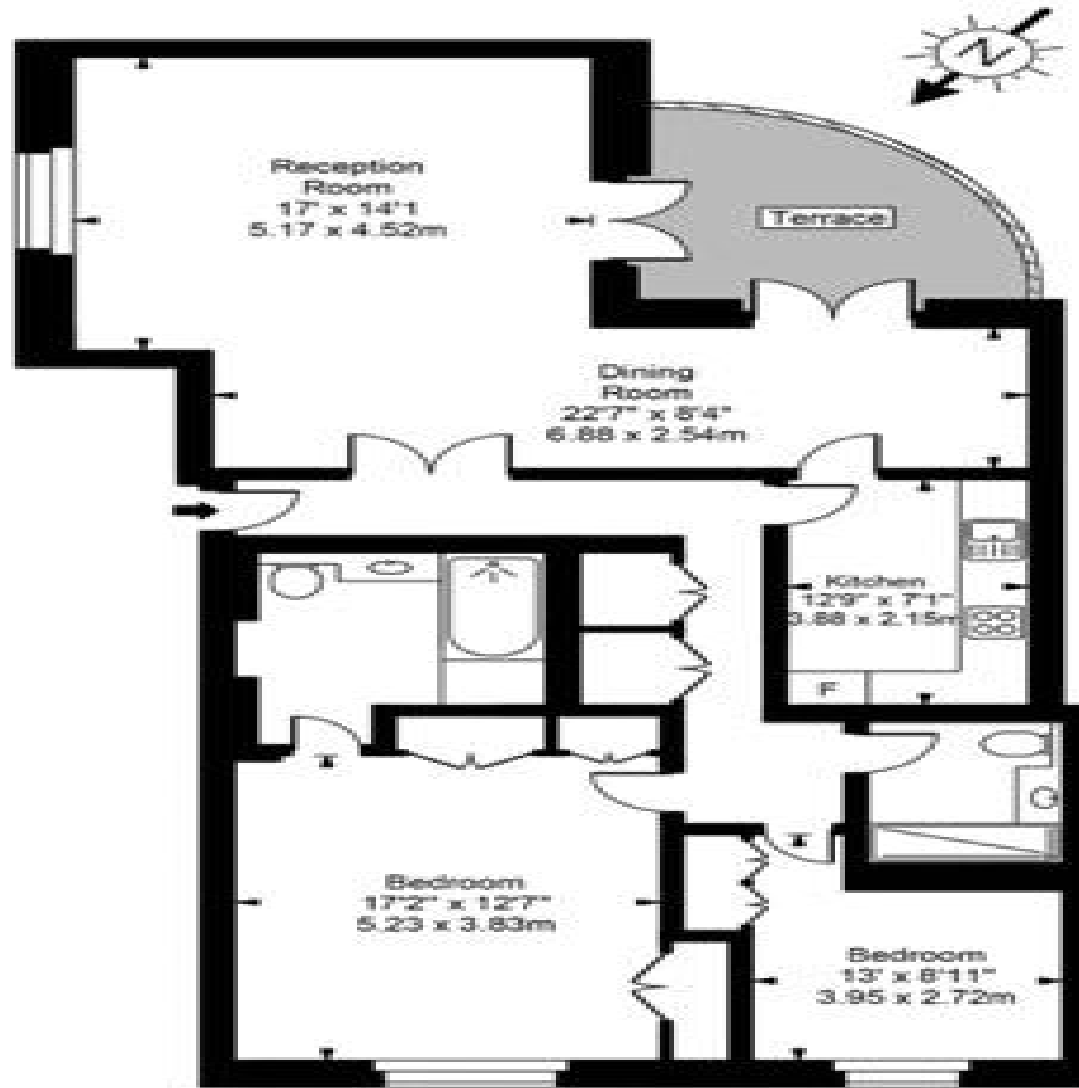
Find us on social media

 vitaproperties

 VitaProperties

 VitaProperties

Wood Mews



Second Floor



Approx Gross Internal Area 1228 Sq Ft - 114.08 Sq M

For Illustration Purposes Only - Not To Scale
Floor plan by www.creativeplanetuk.com