



Park Lane Place, Mayfair, London, W1K. | £5,000,000

- Fully Fitted Kitchen
- Stunning Views
- Wooden Floors
- Modern Bathrooms

- 50% of Gym Membership
- Leasehold; approx 135 years remaining

"Vita Properties have been tremendously helpful throughout the process of securing/renting my flat. Informative about the property, prompt communication, easy to use dashboard for sharing of information, and pleasant to work with. Highly recommend!"

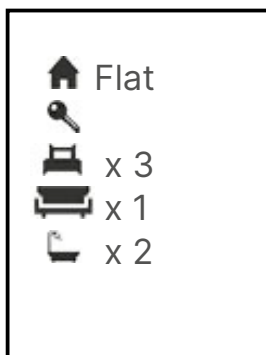
Situated on the fourth floor of a fabulous period building, this stunning two bedroomed apartment is decorated to an extremely high standard and boasts stylish, contemporary interiors and wonderful views of Hyde Park. The property comprises spacious reception room with ample space for separate living and dining areas, well equipped kitchen, master bedroom with en suite bathroom, second bedroom with en suite bathroom, third bedroom/study, separate guest WC and front-aspect balcony spanning the length of the property. Close to the amenities of Piccadilly and the Mayfair area, Park Street is just moments from Hyde Park, a serene green area in the heart of central London. The nearest underground station is Green Park (Jubilee, Victoria and Piccadilly lines), with Hyde Park Corner (Piccadilly Line) and Marble Arch (Central Line) also close by.

Underground Parking & use of the Marriot Hotel facilities



Oliver Kent

✉ [oliver.kent@vitaproperties.uk](mailto:oliver.kent@vitaproperties.uk)  
☎ +4477 7274 0351



"I was very impressed with Vita and their network of buyers. When the sale of my flat fell through (twice) they worked extremely hard to find new buyers in a difficult market - thank you!"

---



"Working with Vita properties has been a smooth experience! No complaints at all. Our letting agent, Diana has been fantastic and very helpful throughout the whole process. I would highly recommend both Vita properties and Diana."

---



"I used Vita properties to find a flat recently and it was an overall professional, personalised and positive experience. Saira went the extra mile to accommodate to our needs and quick to help us whenever possible."

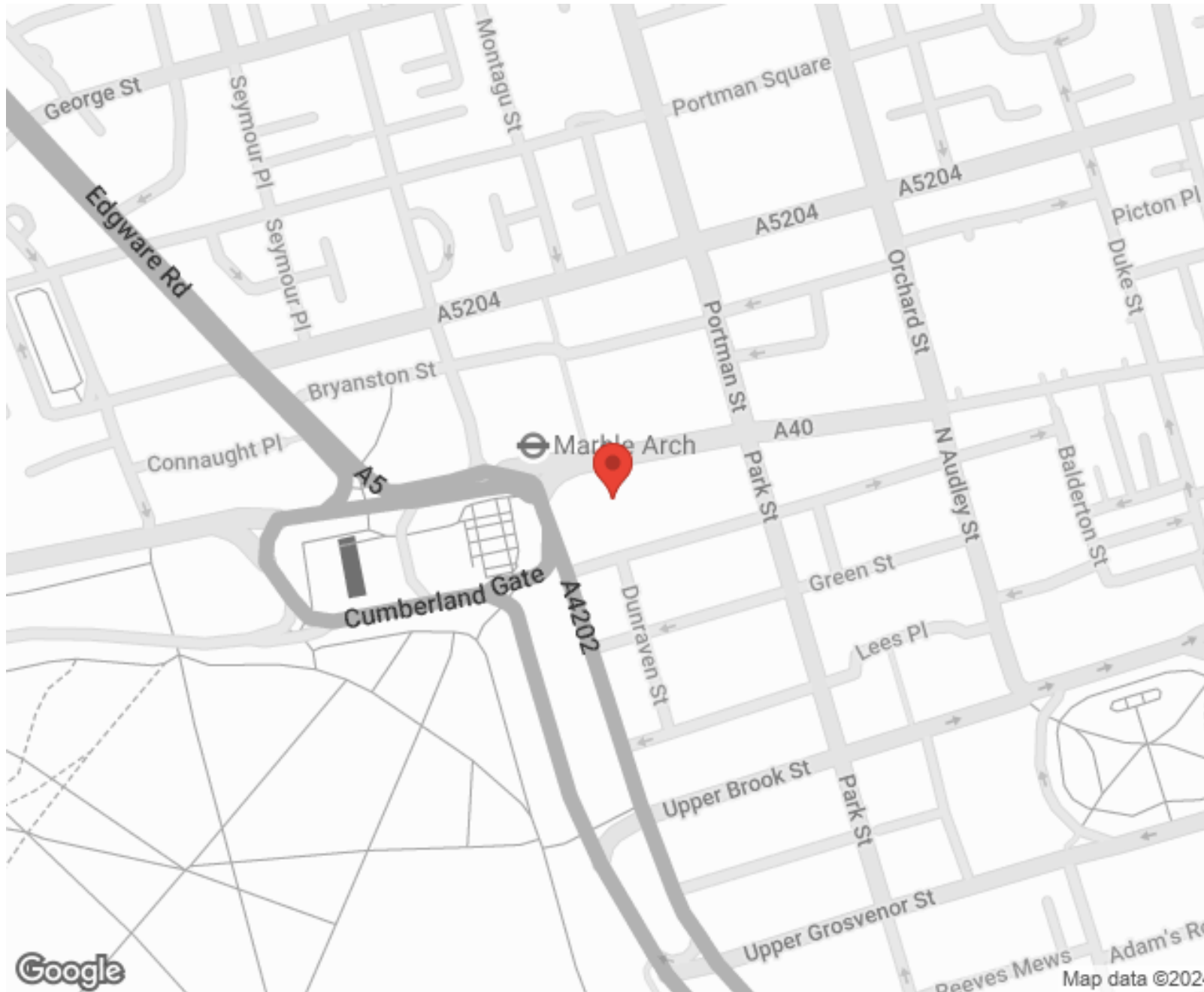
---



**MORE INFO, PICTURES,  
CONTACT ON  
OUR WEBSITE**



"Vita Properties is a very professional agency. My experience with them was incredible and the entire team was very helpful and kind throughout the renting process. I'd highly recommend!"



SCAN FOR MORE  
GOOGLE REVIEWS






Google

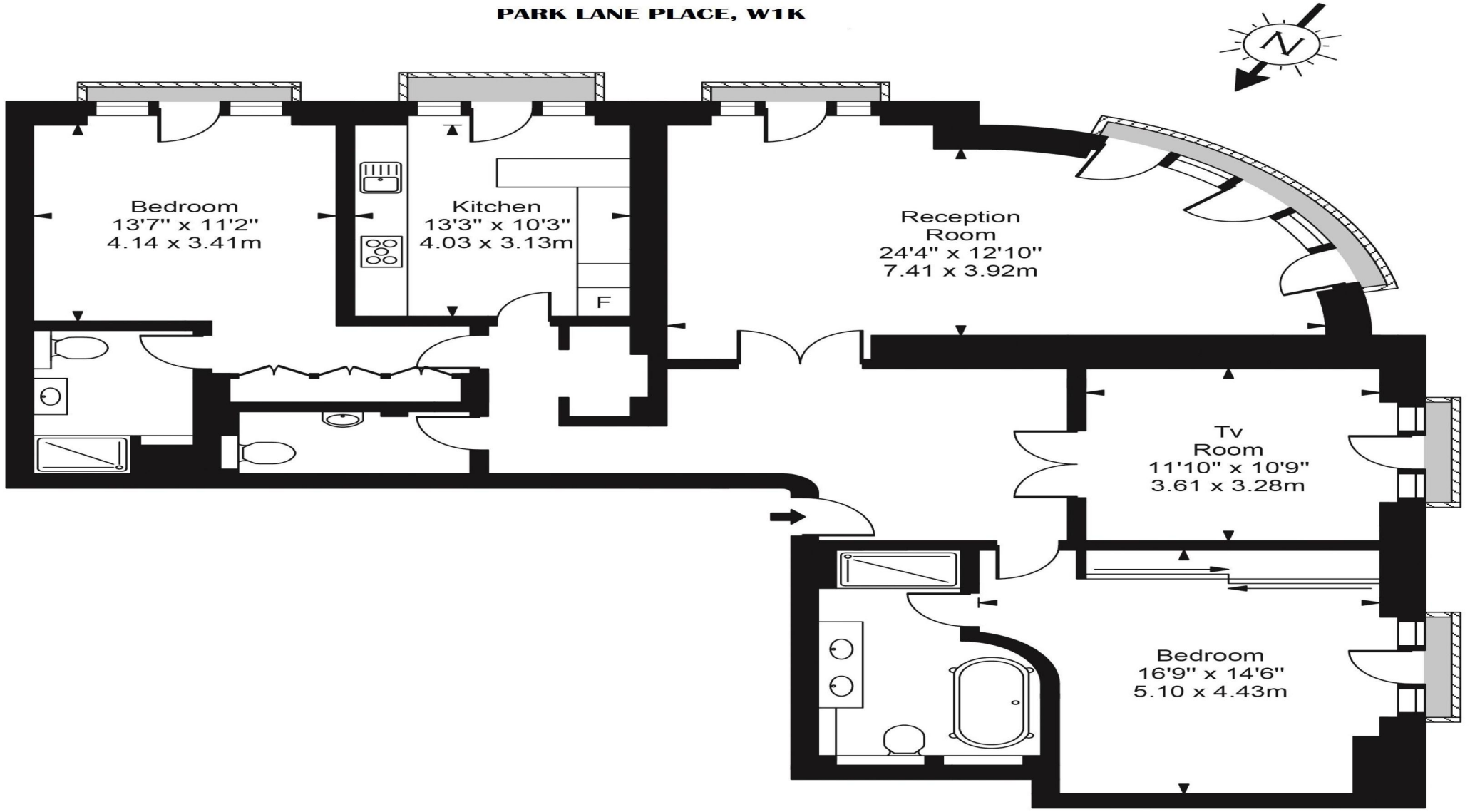


4.9 Stars | 132 Reviews

Find us on social media

-  vitaproperties
-  VitaProperties
-  VitaProperties

**PARK LANE PLACE, W1K**



Sixth Floor

Approx Gross Internal Area **1557 Sq Ft - 144.66 Sq M**

For Illustration Purposes Only - Not To Scale  
Floor plan by [www.creativeplanetlk.com](http://www.creativeplanetlk.com)