



## Clifford Gardens, Kensal Rise, London, NW10 .| £550


- Duplex Apartment
- Two Bathrooms
- Wood Floors
- Available 16th February

- South Facing Balcony
- Kitchen Breakfast Room
- Very Well Presented

"Vita Properties have been tremendously helpful throughout the process of securing/renting my flat. Informative about the property, prompt communication, easy to use dashboard for sharing of information, and pleasant to work with. Highly recommend!"

Available 16th February - A fantastic opportunity to rent this stunning 978 sq ft three bedroom two bathroom duplex apartment with a private South facing balcony set over three floors of this attractive period conversion in Kensal Rise. The property is situated on a quiet one way street in the heart of Kensal Rise and benefits from the transport links, restaurants and shops along Chamberlayne Road

The accommodation comprises entrance on the ground floor then stairs to the first floor; a spacious 16' South facing reception with solid wood floors, feature fireplace and access to the balcony; a modern fitted kitchen with integrated appliances and loft access; bedroom two with fitted wardrobes; a luxury fitted bathroom and bedroom three. The accommodation to the top floor comprises the 19' master bedroom with an ultra modern ensuite showeroom.

	Flat
	Available to Let
	x 3
	x 1
	x 2



Oliver Kent

 [oliver.kent@vitaproperties.uk](mailto:oliver.kent@vitaproperties.uk)  
 +4477 7274 0351



"I was very impressed with Vita and their network of buyers. When the sale of my flat fell through (twice) they worked extremely hard to find new buyers in a difficult market - thank you!"

---



"Working with Vita properties has been a smooth experience! No complaints at all. Our letting agent, Diana has been fantastic and very helpful throughout the whole process. I would highly recommend both Vita properties and Diana."

---



"I used Vita properties to find a flat recently and it was an overall professional, personalised and positive experience. Saira went the extra mile to accommodate to our needs and quick to help us whenever possible."

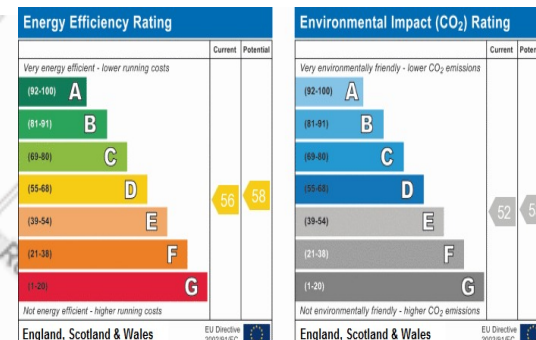
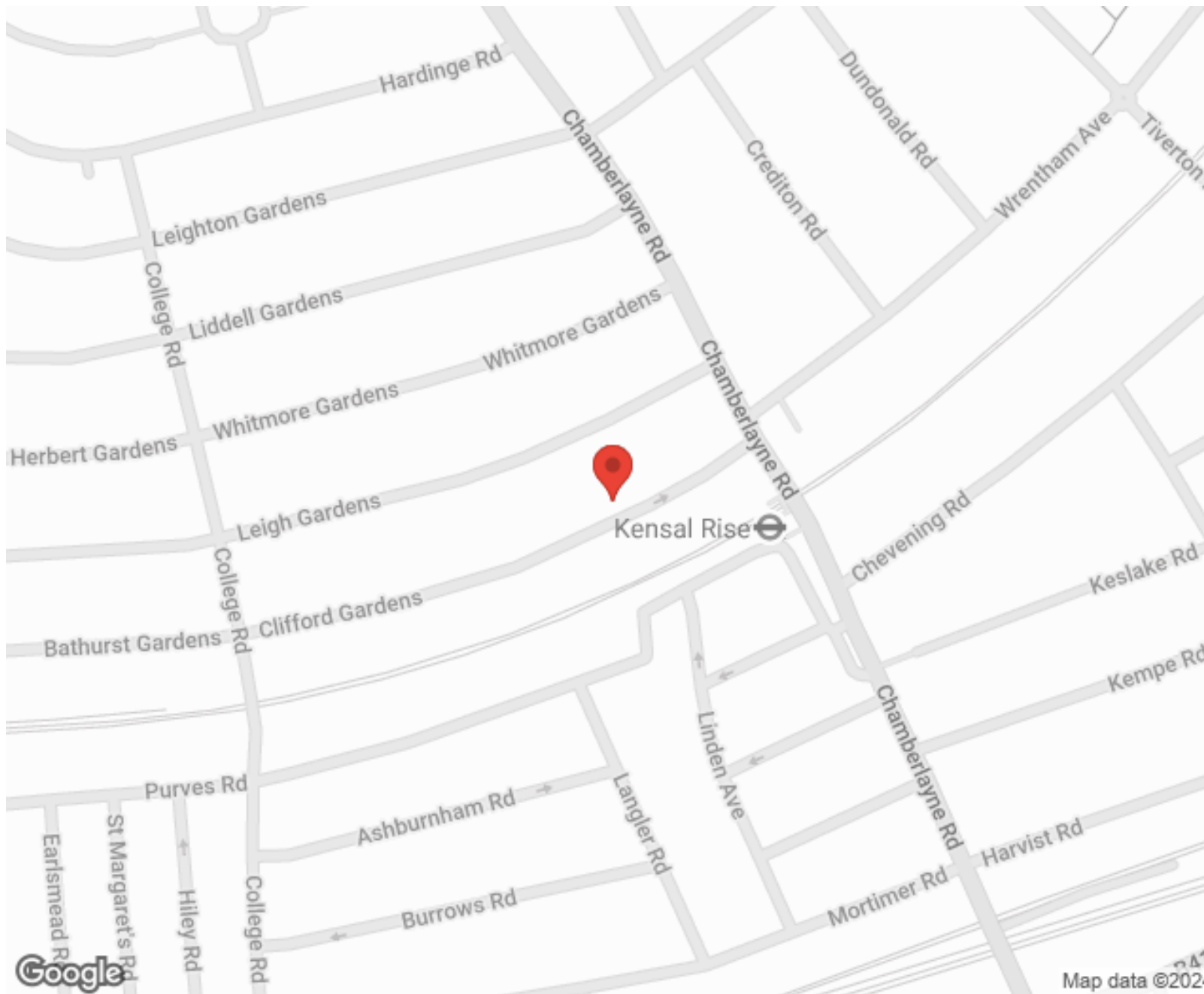
---



**MORE INFO, PICTURES,  
CONTACT ON  
OUR WEBSITE**



"Vita Properties is a very professional agency. My experience with them was incredible and the entire team was very helpful and kind throughout the renting process. I'd highly recommend!"



SCAN FOR MORE  
GOOGLE REVIEWS



Google

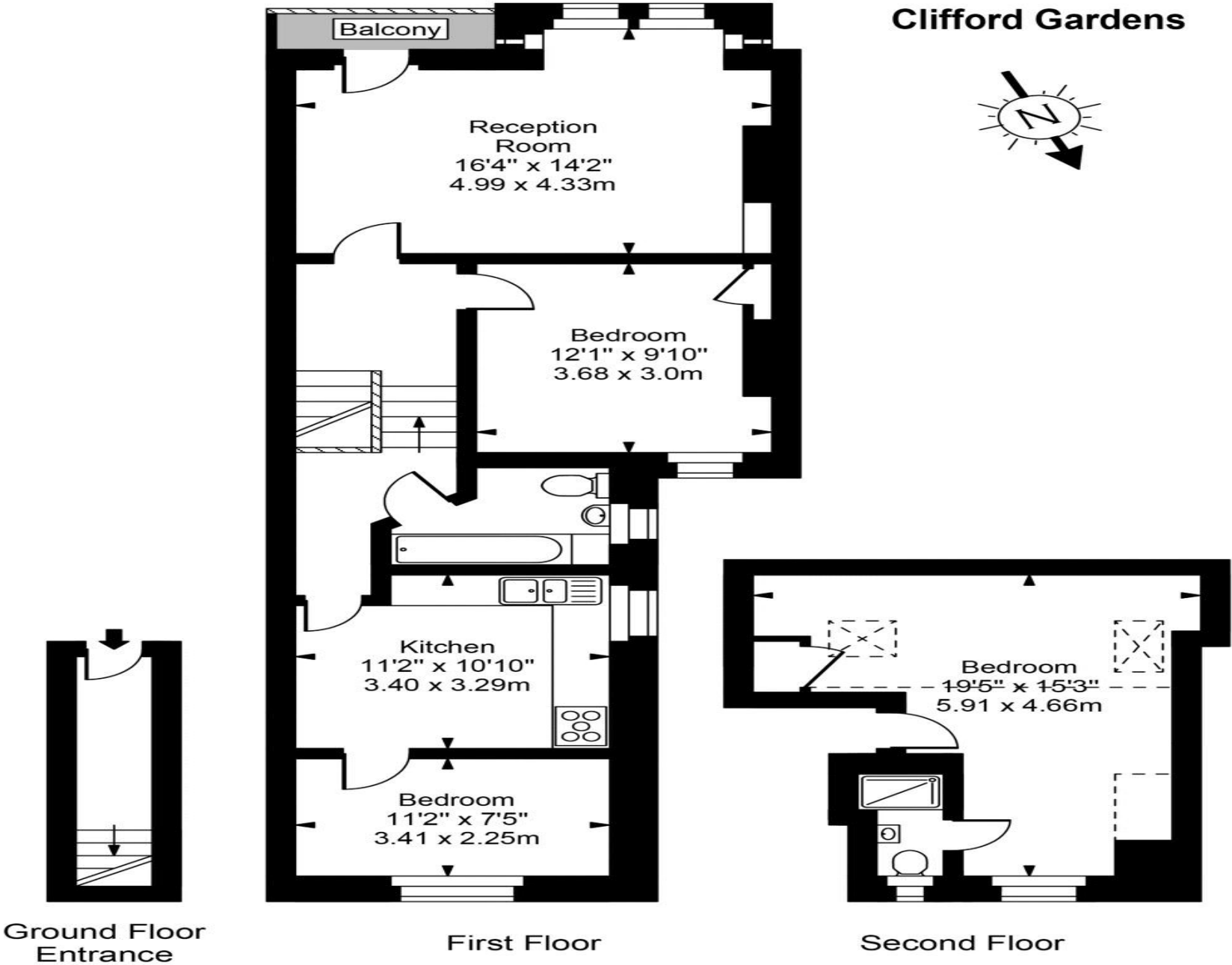
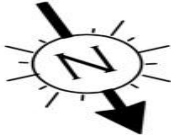


4.9 Stars | 132 Reviews

Find us on social media

- vitaproperties
- VitaProperties
- VitaProperties

**Clifford Gardens**



**Approx Gross Internal Area 978 Sq Ft - 90.82 Sq M**

For Illustration Purposes Only - Not To Scale  
Floor plan by [www.creativeplanettk.com](http://www.creativeplanettk.com)