



Jack Straws Castle, North End Way, Hampstead, London, NW3 .| £550

- Modern
- Fantastic Location
- In House Gym
- Parking

- Moments to Hampstead Village
- Available 09 February 2016
- Council tax - G - £2201 per annum

"Vita Properties have been tremendously helpful throughout the process of securing/renting my flat. Informative about the property, prompt communication, easy to use dashboard for sharing of information, and pleasant to work with. Highly recommend!"

Situated at the highest point in London is this superb two bedroom one bathroom house situated in a land mark development opposite Hampstead Heath.

The house has a number of benefits including off street parking, a spacious living area, master bedroom with fitted wardrobes, a fully modernised kitchen with granite surfaces, an in house gym and is set within walking distance to the tube and amenities of Hampstead, Golders Green.

The M1 and North Circular are within easy access on an unfurnished basis



Oliver Kent

✉ oliver.kent@vitaproperties.uk

☎ +4477 7274 0351



🏠	House
🔑	Available to Let
🛏️	x 2
🛋️	x 1
🚿	x 1



"I was very impressed with Vita and their network of buyers. When the sale of my flat fell through (twice) they worked extremely hard to find new buyers in a difficult market - thank you!"



"Working with Vita properties has been a smooth experience! No complaints at all. Our letting agent, Diana has been fantastic and very helpful throughout the whole process. I would highly recommend both Vita properties and Diana."



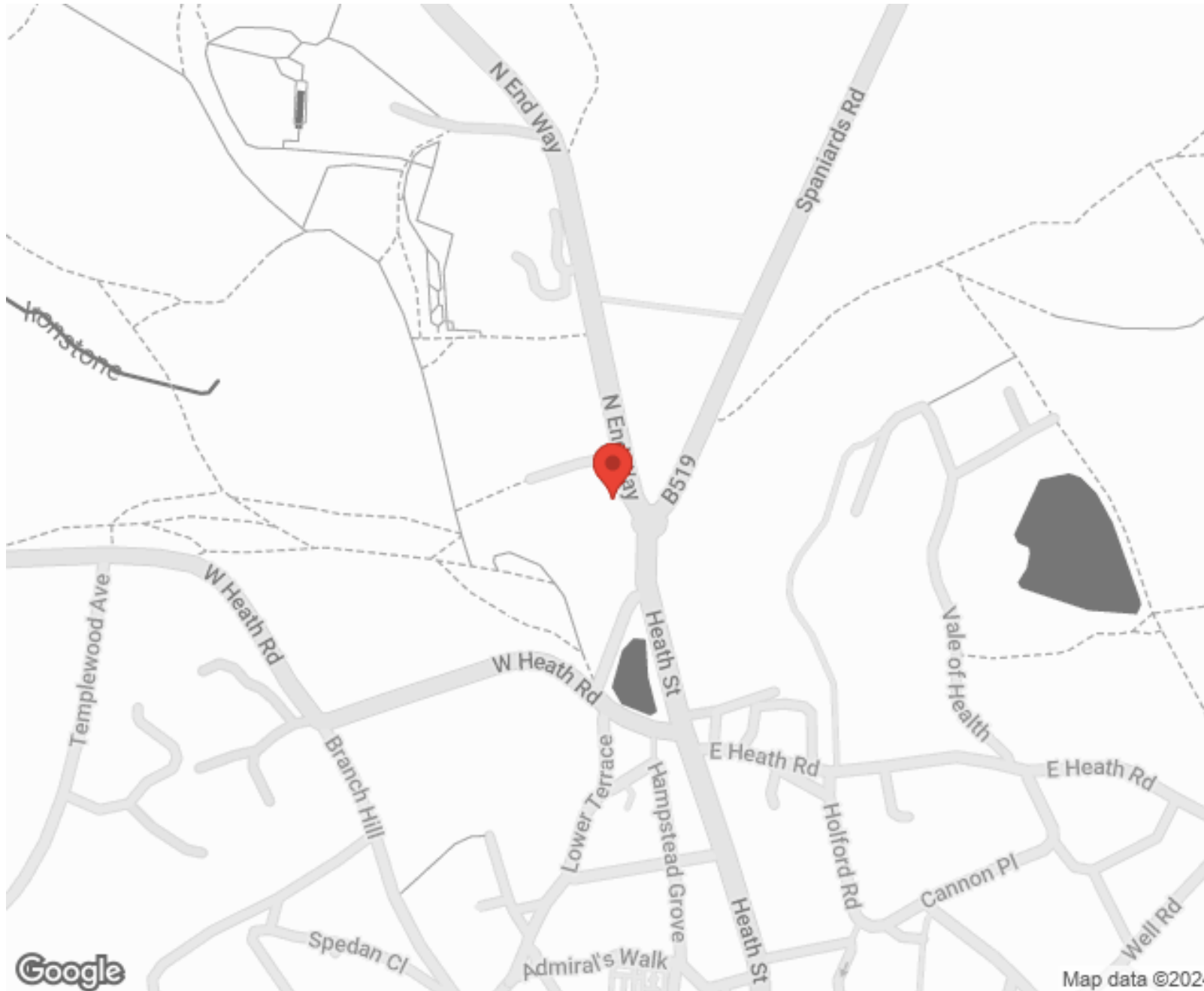
"I used Vita properties to find a flat recently and it was an overall professional, personalised and positive experience. Saira went the extra mile to accommodate to our needs and quick to help us whenever possible."



**MORE INFO, PICTURES,
CONTACT ON
OUR WEBSITE**



"Vita Properties is a very professional agency. My experience with them was incredible and the entire team was very helpful and kind throughout the renting process. I'd highly recommend!"



SCAN FOR MORE
GOOGLE REVIEWS



Google



4.9 Stars | 132 Reviews

Find us on social media

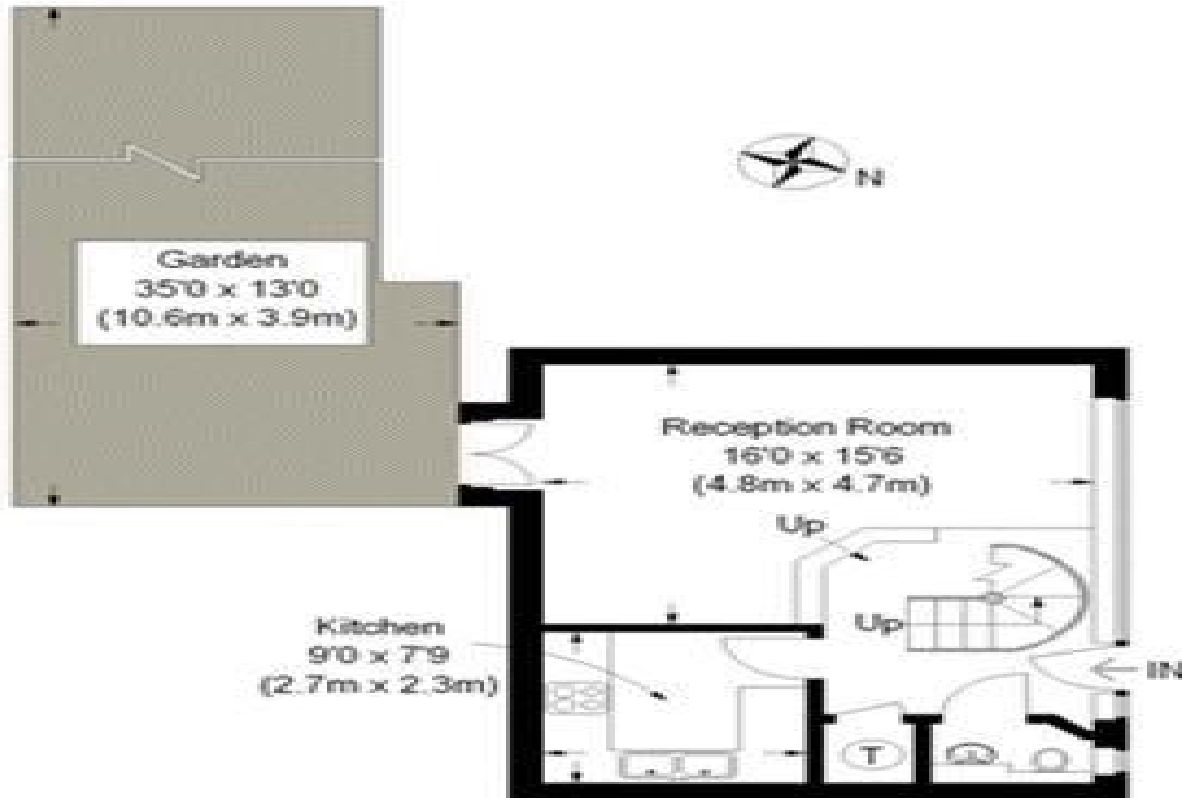
 vitaproperties

 VitaProperties

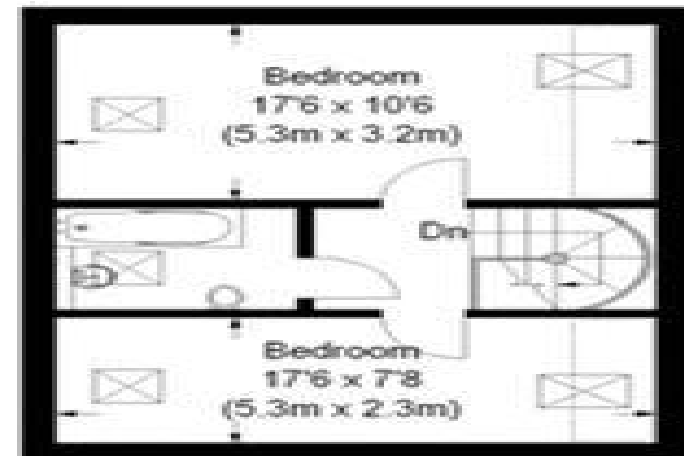
 VitaProperties

Jack Straws Castle, NW3

Approximate Gross Internal Area
839 sq ft / 78 sq m



Ground Floor
Gross Internal
Floor Area:-(441 sq ft)



First Floor
Gross Internal
Floor Area:-(398 sq ft)

▭ = Reduced headroom
below 1.5 m / 5'0"