



Gloucester Place, Marylebone, London, NW1 .| £545

- Newly renovated
- Seconds to transport
- Moments from Baker Street
- Managed

- Available immediately
- Council tax - F - £980 per annum

"Vita Properties have been tremendously helpful throughout the process of securing/renting my flat. Informative about the property, prompt communication, easy to use dashboard for sharing of information, and pleasant to work with. Highly recommend!"

Available immediately is this fully renovated lower ground floor 2 bedroom flat situated moments to local transport, Marylebone and Baker Street, The flat has been renovated to a high standard benefits wooden floors, a fitted kitchen and fully tiled bathrooms.

The flat is perfect for a couple or small family



Oliver Kent

✉ [oliver.kent@vitaproperties.uk](mailto:oliver.kent@vitaproperties.uk)

☎ +4477 7274 0351

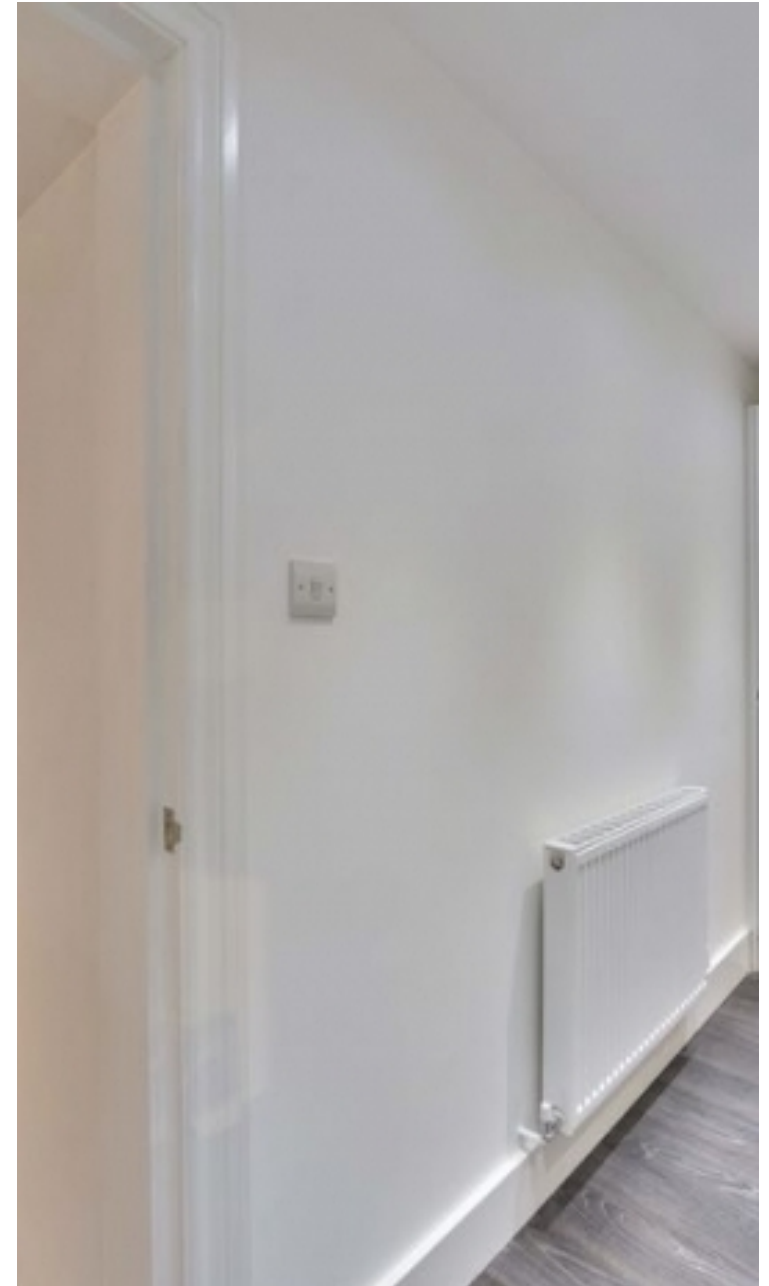


🏠	Flat
🔑	Available to Let
🛏️	x 2
🛋️	x 1
🚿	x 2



"I was very impressed with Vita and their network of buyers. When the sale of my flat fell through (twice) they worked extremely hard to find new buyers in a difficult market - thank you!"

---



"Working with Vita properties has been a smooth experience! No complaints at all. Our letting agent, Diana has been fantastic and very helpful throughout the whole process. I would highly recommend both Vita properties and Diana."

---





"I used Vita properties to find a flat recently and it was an overall professional, personalised and positive experience. Saira went the extra mile to accommodate to our needs and quick to help us whenever possible."

---

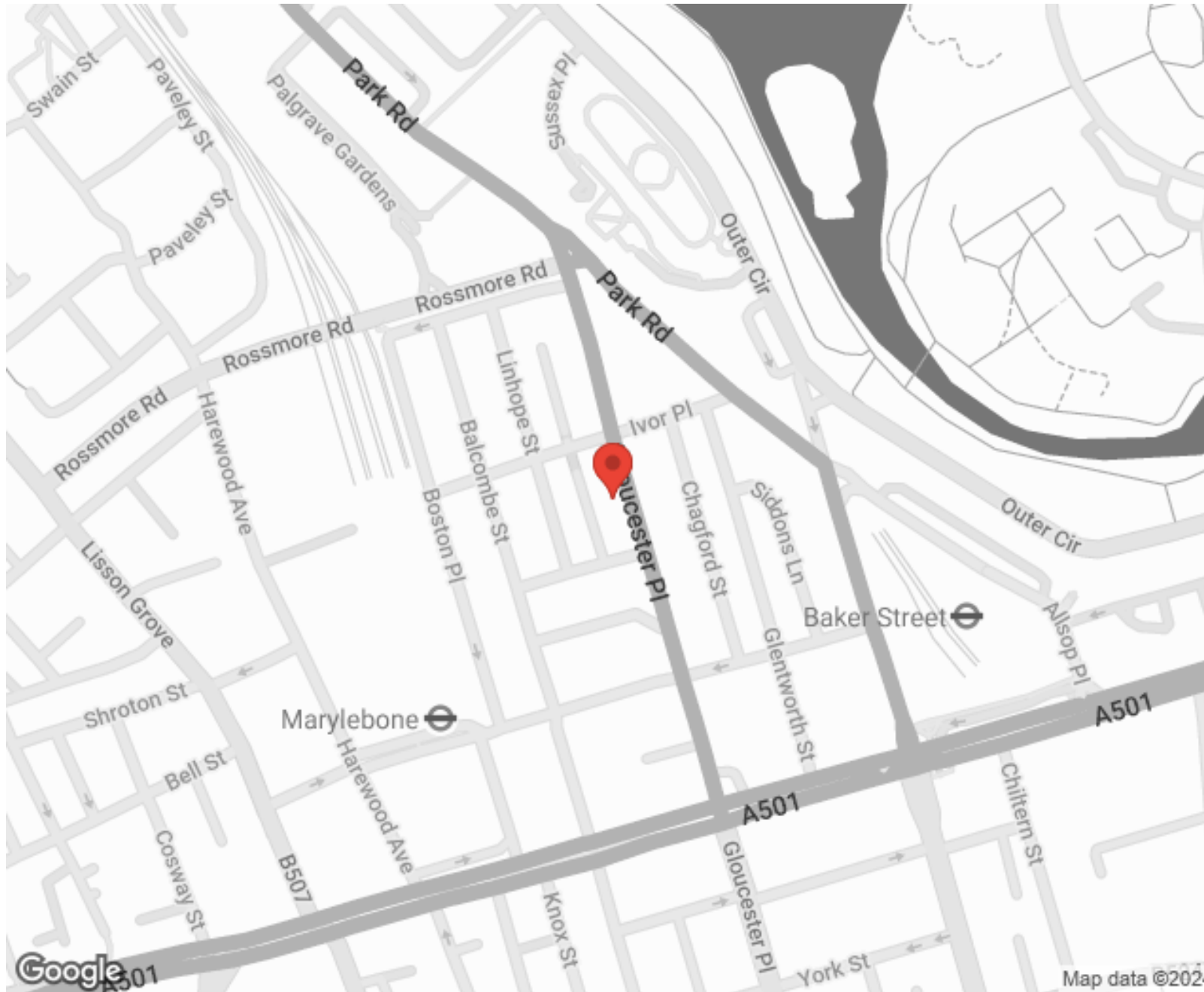


**MORE INFO, PICTURES,  
CONTACT ON  
OUR WEBSITE**



"Vita Properties is a very professional agency. My experience with them was incredible and the entire team was very helpful and kind throughout the renting process. I'd highly recommend!"

---



SCAN FOR MORE  
GOOGLE REVIEWS





Google

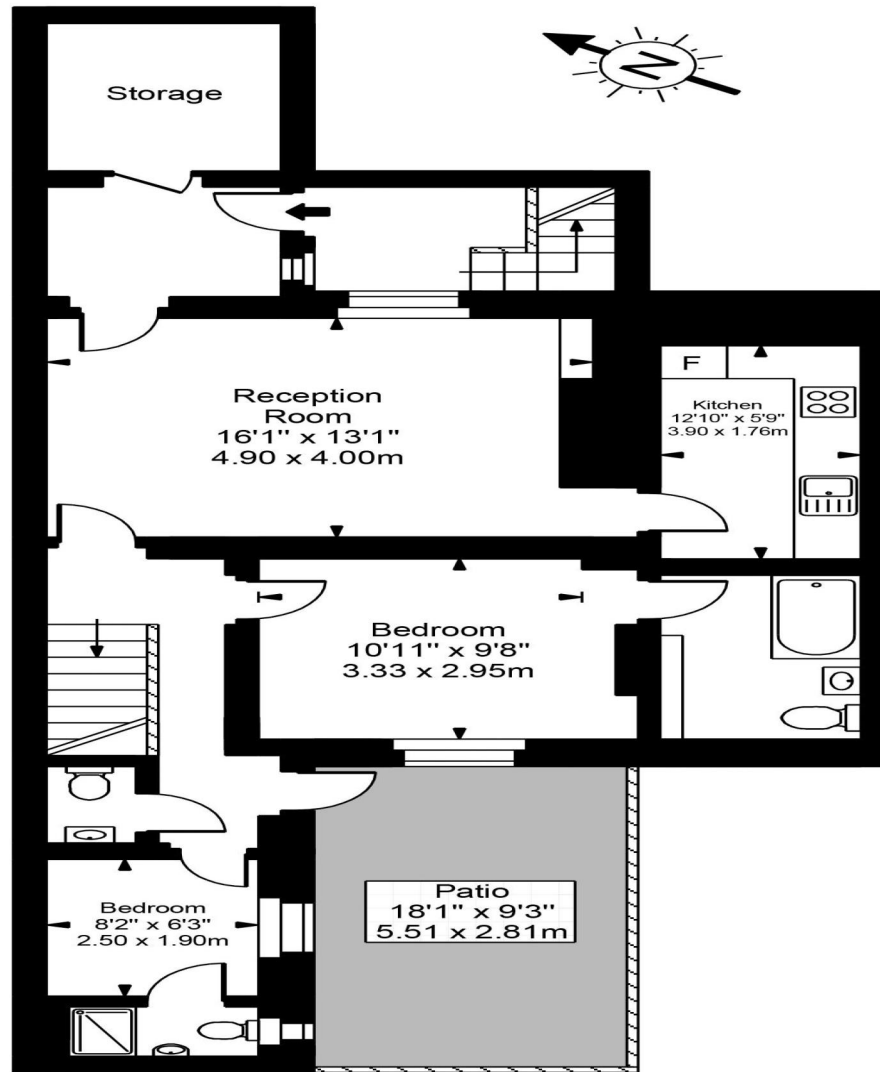


4.9 Stars | 132 Reviews

Find us on social media

-  vitaproperties
-  VitaProperties
-  VitaProperties

# Gloucester Place



Ground Floor

Approx Gross Internal Area **914 Sq Ft - 84.95 Sq M**

For Illustration Purposes Only - Not To Scale  
Floor plan by [www.creativeplanettk.com](http://www.creativeplanettk.com)

