



Gloucester Place, Marylebone, London, NW1. | £380

- Second to transport
- Modern
- Managed
- Within moments of Baker Street and Marylebone

- Available 11 April 2017

"Vita Properties have been tremendously helpful throughout the process of securing/renting my flat. Informative about the property, prompt communication, easy to use dashboard for sharing of information, and pleasant to work with. Highly recommend!"

Available 11 April 2017 - is a modern ground floor 1 bedroom flat located moments to local transport, Marylebone and Baker Street, The flat has been modernised to a fantastic standard benefiting wooden floors, modern furnishing, fitted storage and feature fireplaces. The bathroom and kitchen are fully tiled and private to this property even though they are external from the flat (on the same floor - see floor plan) The flat is perfect for a single person or couple.



Oliver Kent

✉ oliver.kent@vitaproperties.uk

☎ +4477 7274 0351



🏠	Flat
🔑	Available to Let
🛏️	x 1
🚿	x 1
🚻	x 1



"I was very impressed with Vita and their network of buyers. When the sale of my flat fell through (twice) they worked extremely hard to find new buyers in a difficult market - thank you!"



"Working with Vita properties has been a smooth experience! No complaints at all. Our letting agent, Diana has been fantastic and very helpful throughout the whole process. I would highly recommend both Vita properties and Diana."



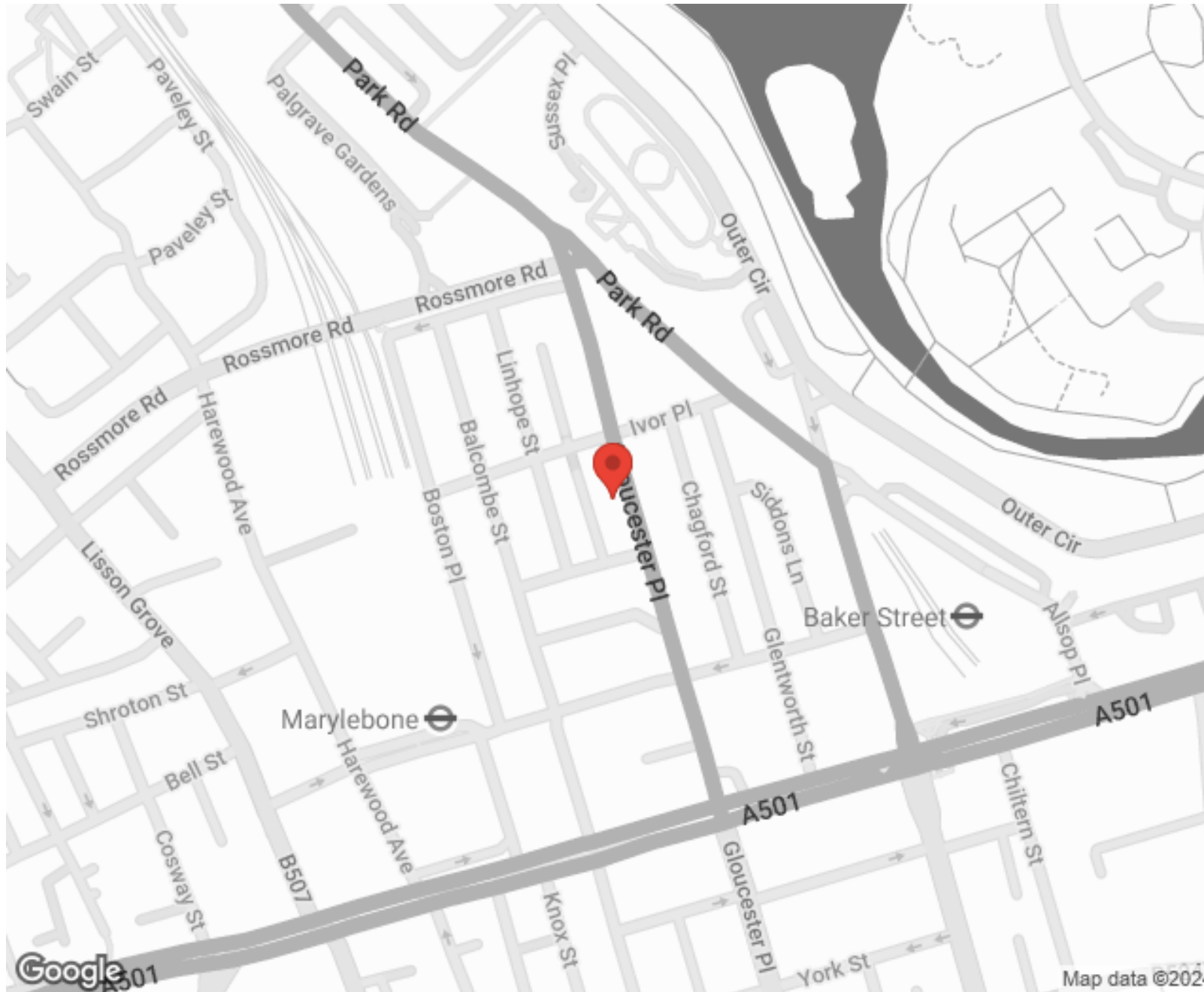
"I used Vita properties to find a flat recently and it was an overall professional, personalised and positive experience. Saira went the extra mile to accommodate to our needs and quick to help us whenever possible."



**MORE INFO, PICTURES,
CONTACT ON
OUR WEBSITE**



"Vita Properties is a very professional agency. My experience with them was incredible and the entire team was very helpful and kind throughout the renting process. I'd highly recommend!"



SCAN FOR MORE
GOOGLE REVIEWS





Google

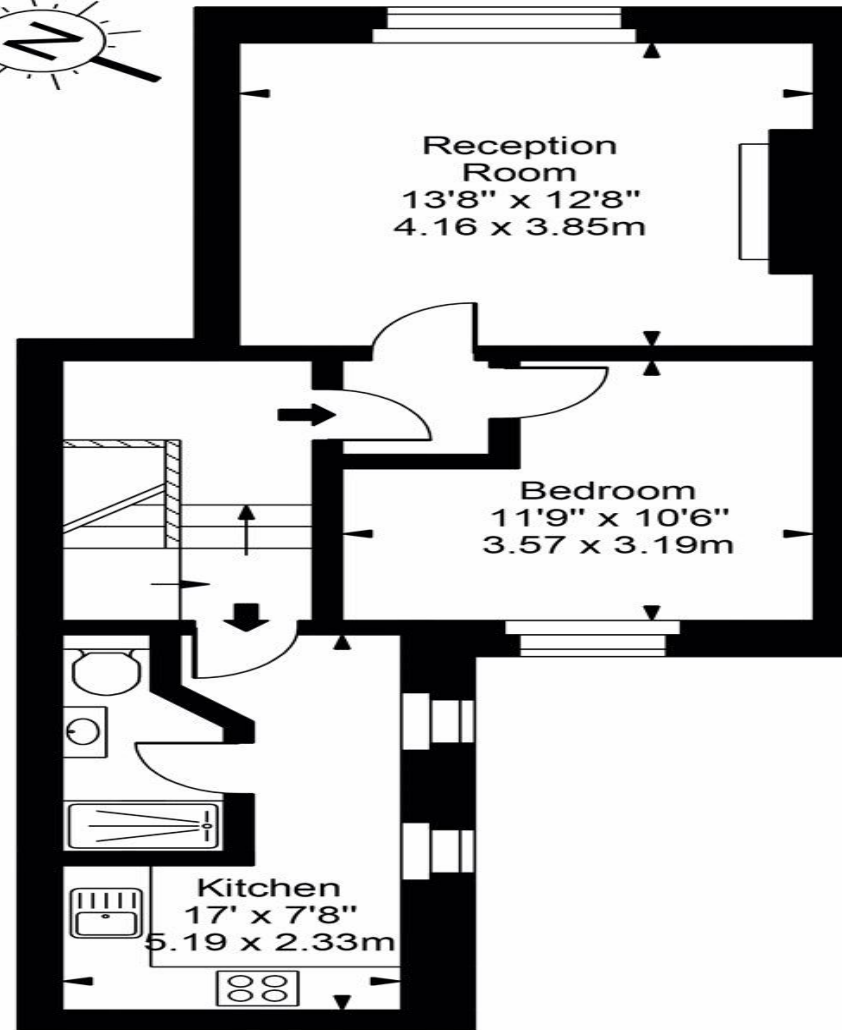
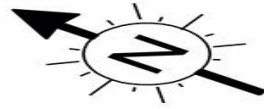


4.9 Stars | 132 Reviews

Find us on social media

-  vitaproperties
-  VitaProperties
-  VitaProperties

Gloucester Place



Ground Floor

Approx Gross Internal Area **516 Sq Ft - 47.94 Sq M**

For Illustration Purposes Only - Not To Scale
Floor plan by www.creativeplanetlk.com

