



Randolph Avenue, Maida Vale, London, W9 .| £575

- 915 sq ft
- Balcony
- Lift
- Well Located

- Available 20th December
- Large dual aspect reception
- Council tax - F - £989 per annum

"Vita Properties have been tremendously helpful throughout the process of securing/renting my flat. Informative about the property, prompt communication, easy to use dashboard for sharing of information, and pleasant to work with. Highly recommend!"

Available immediately is this bright and spacious 4th floor two bedroom flat in this portered purpose built block in the heart of Little Venice with wonderful views over North and West London. Comprising: large dual aspect reception, modern kitchen, two double bedrooms, two bathrooms, balcony and a lift and is ideally located for the shops and Warwick Avenue Underground.

Offered on a furnished or unfurnished basis



Oliver Kent

✉ oliver.kent@vitaproperties.uk

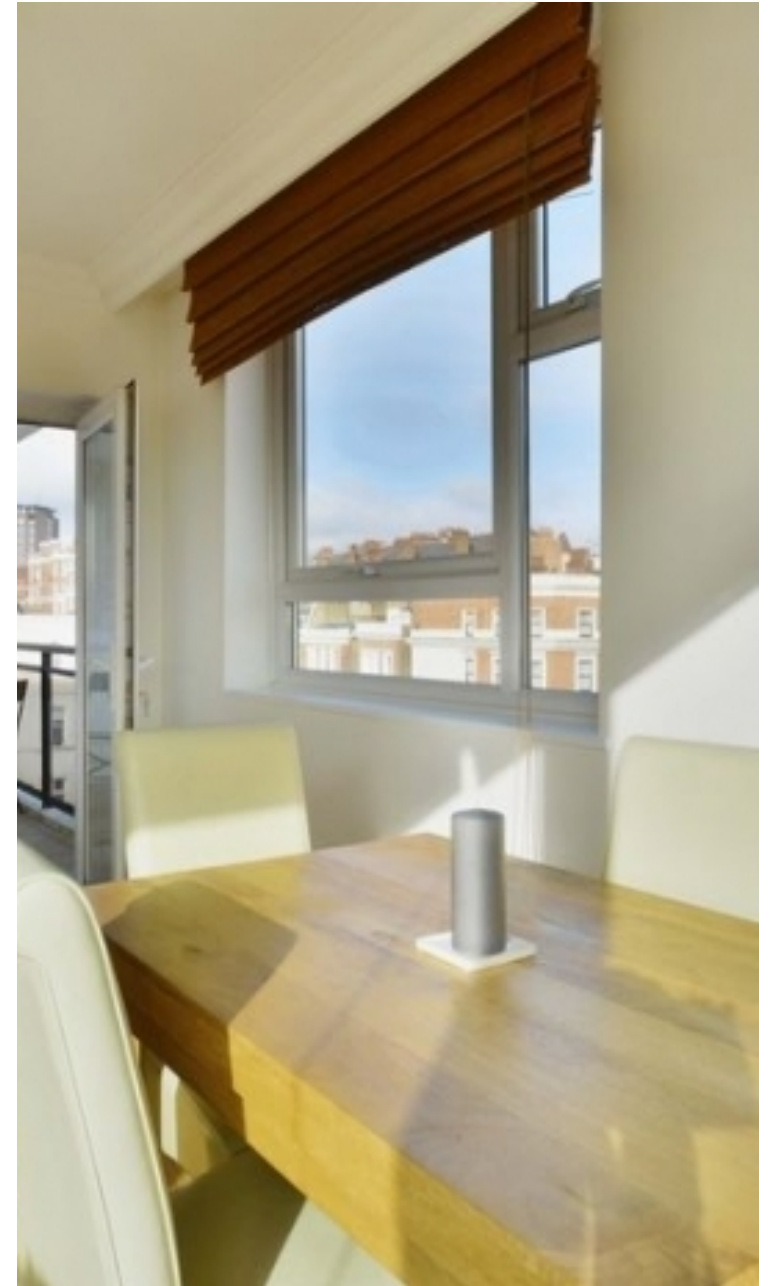
☎ +4477 7274 0351



🏠	Flat
🔑	Under Negotiation
🛏️	x 2
🛁	x 1
🚪	x 2



"I was very impressed with Vita and their network of buyers. When the sale of my flat fell through (twice) they worked extremely hard to find new buyers in a difficult market - thank you!"



"Working with Vita properties has been a smooth experience! No complaints at all. Our letting agent, Diana has been fantastic and very helpful throughout the whole process. I would highly recommend both Vita properties and Diana."



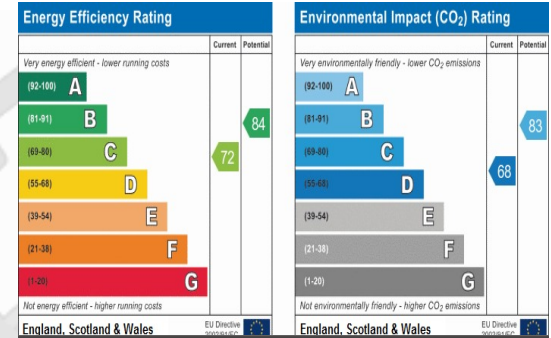
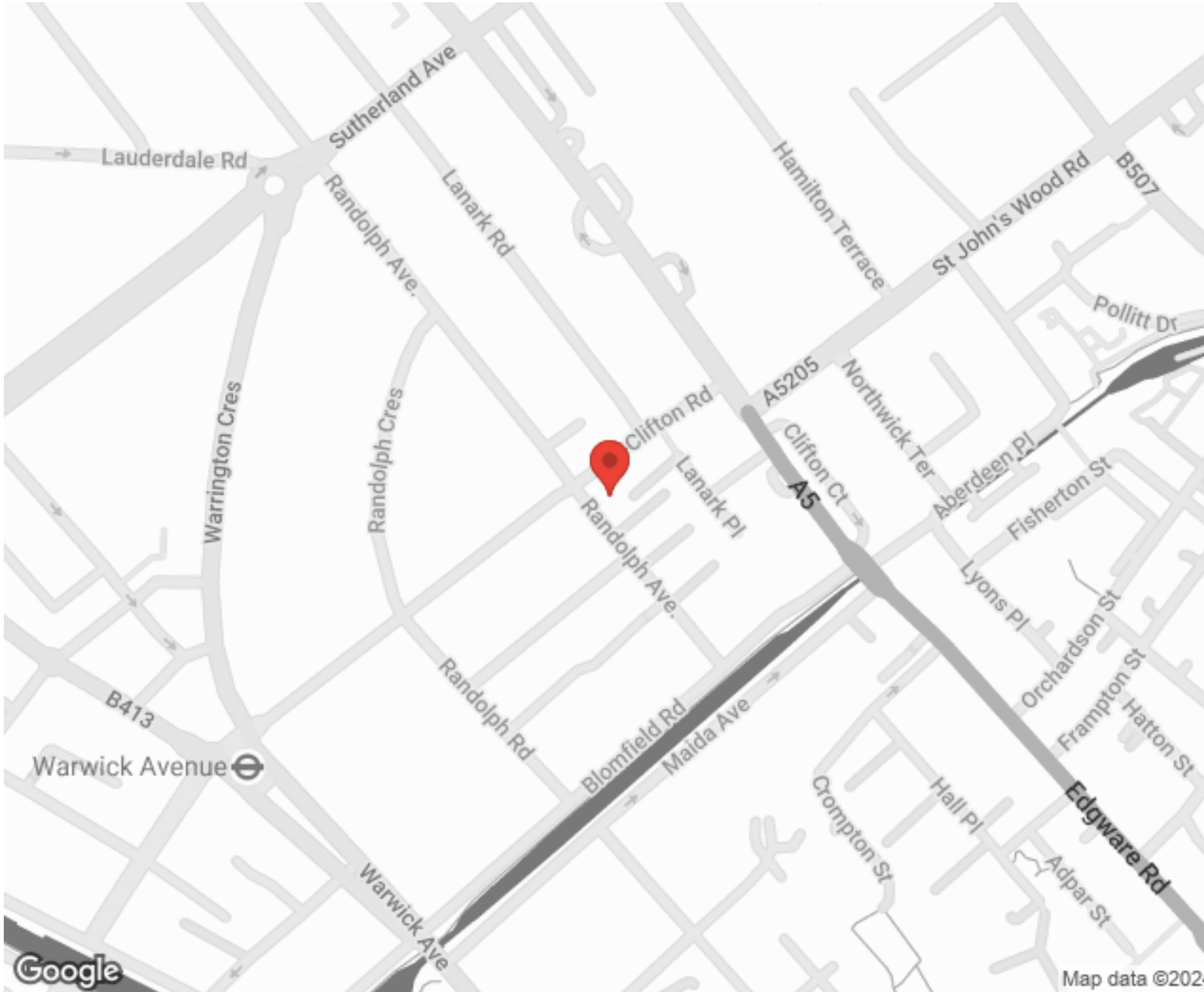
"I used Vita properties to find a flat recently and it was an overall professional, personalised and positive experience. Saira went the extra mile to accommodate to our needs and quick to help us whenever possible."



**MORE INFO, PICTURES,
CONTACT ON
OUR WEBSITE**



"Vita Properties is a very professional agency. My experience with them was incredible and the entire team was very helpful and kind throughout the renting process. I'd highly recommend!"



SCAN FOR MORE
GOOGLE REVIEWS



Google

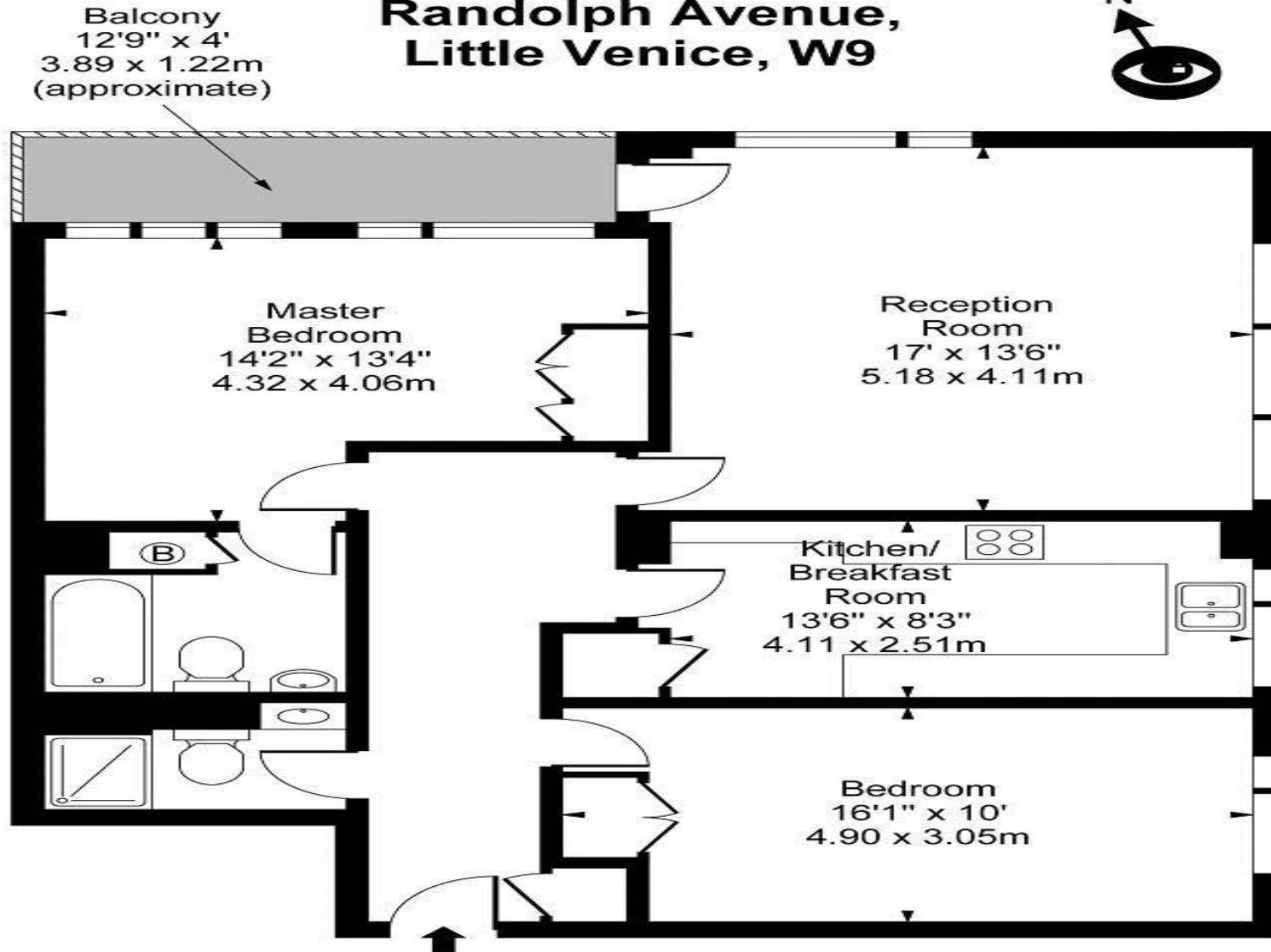


4.9 Stars | 132 Reviews

Find us on social media

- vitaproperties
- VitaProperties
- VitaProperties

**Melbourne Court,
Randolph Avenue,
Little Venice, W9**



Fourth Floor

Approx Gross Internal Area 915 Sq Ft - 85.00 Sq M

For Illustration Purposes Only - Not To Scale

Floor Plan by www.bpmmediagroup.com

Ref: No. P53900