



## Daleham Gardens, Belsize Park, London, NW3 .| £435

- Recently renovated
- Top floor
- An abundance of natural light
- Seconds to Swiss Cottage tube

- Furnished
- Available 01 June
- Council tax - E - £1614 per annum

"Vita Properties have been tremendously helpful throughout the process of securing/renting my flat. Informative about the property, prompt communication, easy to use dashboard for sharing of information, and pleasant to work with. Highly recommend!"

Available 01 June is this large top floor two double bedroom flat in a period house minutes from Swiss Cottage Jubilee Line station and a few minutes walk from Belsize Park village. The property has just been renovated and offers a large living room and bedrooms, 2 bathrooms (1 en suite shower), a newly fitted kitchen and has an abundance of natural light.

Available furnished



Oliver Kent

✉ [oliver.kent@vitaproperties.uk](mailto:oliver.kent@vitaproperties.uk)

☎ +4477 7274 0351



	Flat
	Under Negotiation
	x 2
	x 1
	x 2

"I was very impressed with Vita and their network of buyers. When the sale of my flat fell through (twice) they worked extremely hard to find new buyers in a difficult market - thank you!"

---



"Working with Vita properties has been a smooth experience! No complaints at all. Our letting agent, Diana has been fantastic and very helpful throughout the whole process. I would highly recommend both Vita properties and Diana."

---



"I used Vita properties to find a flat recently and it was an overall professional, personalised and positive experience. Saira went the extra mile to accommodate to our needs and quick to help us whenever possible."

---

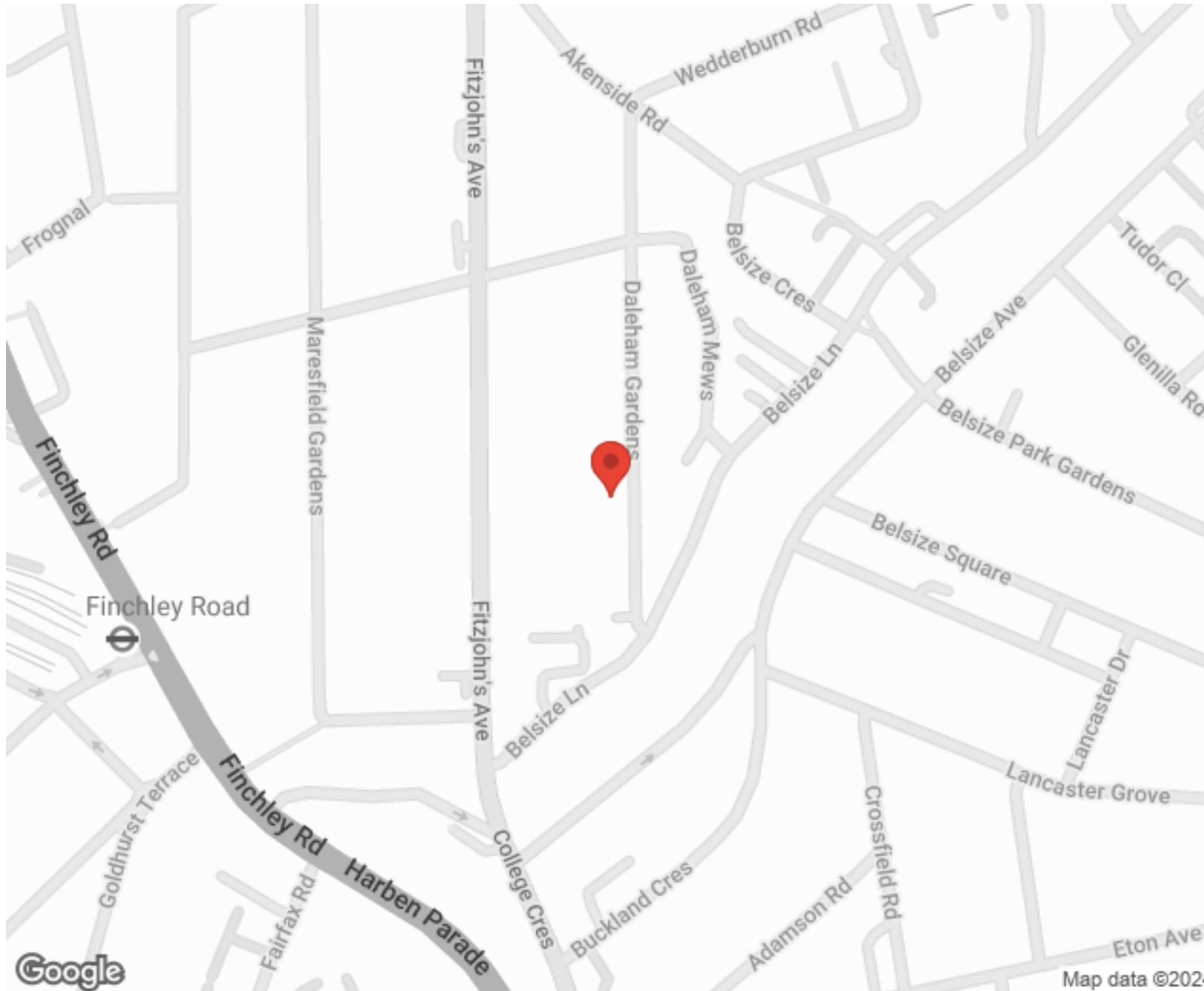


**MORE INFO, PICTURES,  
CONTACT ON  
OUR WEBSITE**



"Vita Properties is a very professional agency. My experience with them was incredible and the entire team was very helpful and kind throughout the renting process. I'd highly recommend!"

---



SCAN FOR MORE  
GOOGLE REVIEWS




Google




4.9 Stars | 132 Reviews

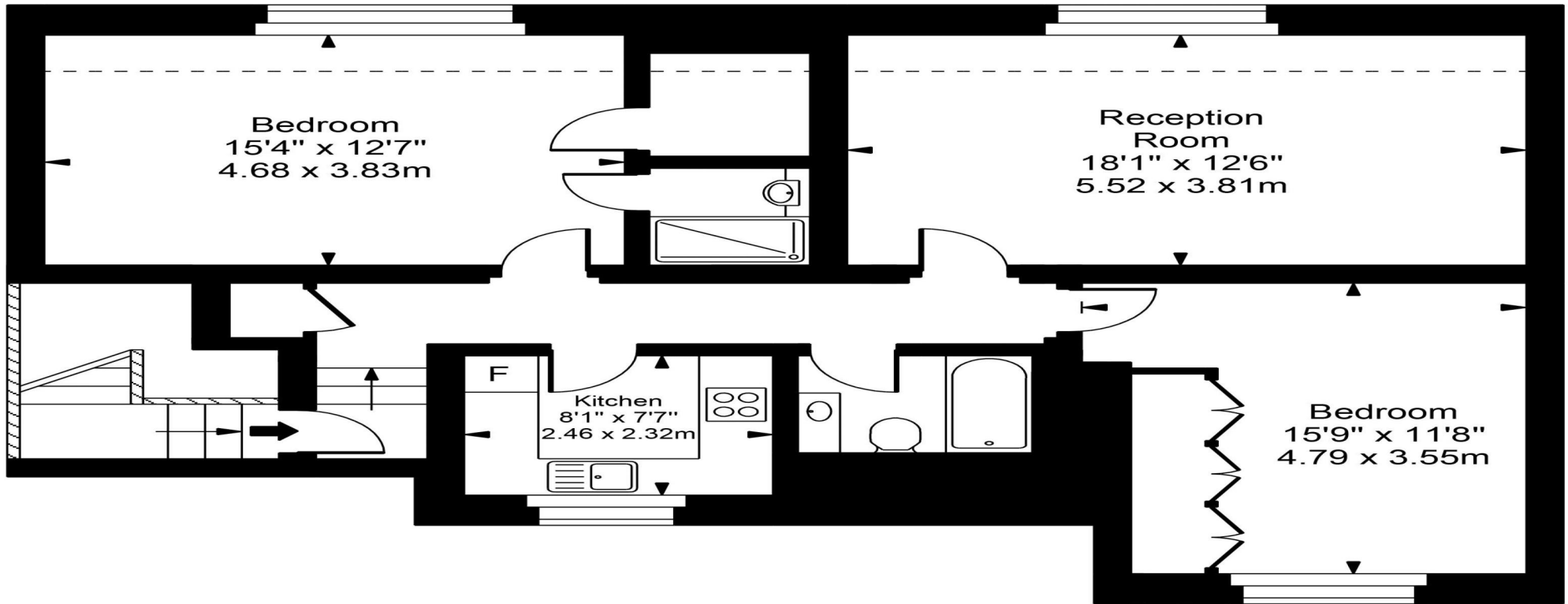
Find us on social media

 vitaproperties

 VitaProperties

 VitaProperties

# Daleham Gardens



Top Floor

Approx Gross Internal Area **989 Sq Ft - 91.87 Sq M**



For Illustration Purposes Only - Not To Scale  
Floor plan by [www.creativeplanetlk.com](http://www.creativeplanetlk.com)