



Priory Road, South Hampstead, London, NW6 .| £495

- Interior Designed
- First Floor
- Modern Fitted Kitchen
- Stunning Conversion

- Managed
- Part Furnished
- Available immediately

"Vita Properties have been tremendously helpful throughout the process of securing/renting my flat. Informative about the property, prompt communication, easy to use dashboard for sharing of information, and pleasant to work with. Highly recommend!"

---

Available immediately - A interior designed two double bedroom first floor flat set within close proximity to West Hampstead underground station and Thameslink station.

The property benefits from a large reception/dining room, two double bedrooms, fully fitted kitchen, modern bathroom suite and the added attraction of high ceilings.

Priory Road is situated off the famous Abbey Road and is within easy walking distance to the local shops and amenities. Please call Vita Properties on 020 7759 2199 for further details.



Oliver Kent

✉ [oliver.kent@vitaproperties.uk](mailto:oliver.kent@vitaproperties.uk)  
☎ +4477 7274 0351

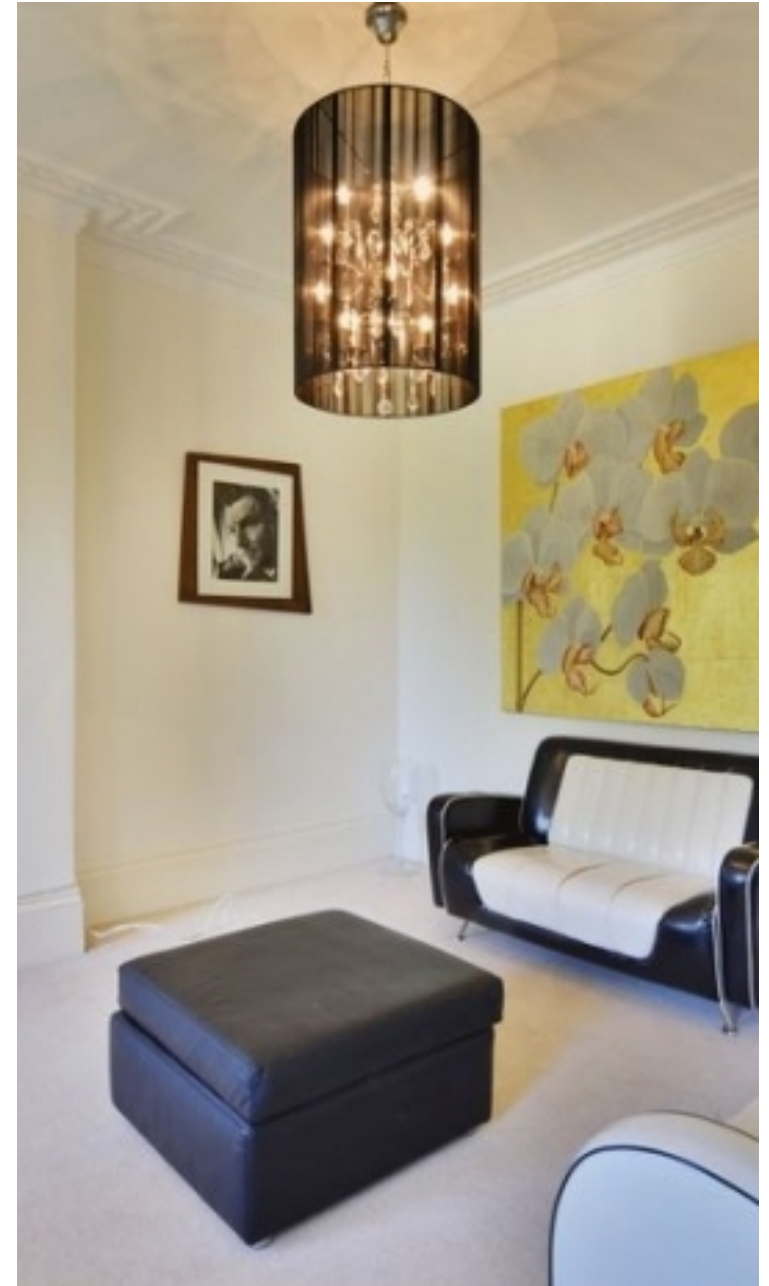


🏠 Flat  
🔑 Available  
to Let  
🛏 x 2  
🛋 x 1  
🚿 x 1



"I was very impressed with Vita and their network of buyers. When the sale of my flat fell through (twice) they worked extremely hard to find new buyers in a difficult market - thank you!"

---



"Working with Vita properties has been a smooth experience! No complaints at all. Our letting agent, Diana has been fantastic and very helpful throughout the whole process. I would highly recommend both Vita properties and Diana."

---





"I used Vita properties to find a flat recently and it was an overall professional, personalised and positive experience. Saira went the extra mile to accommodate to our needs and quick to help us whenever possible."

---

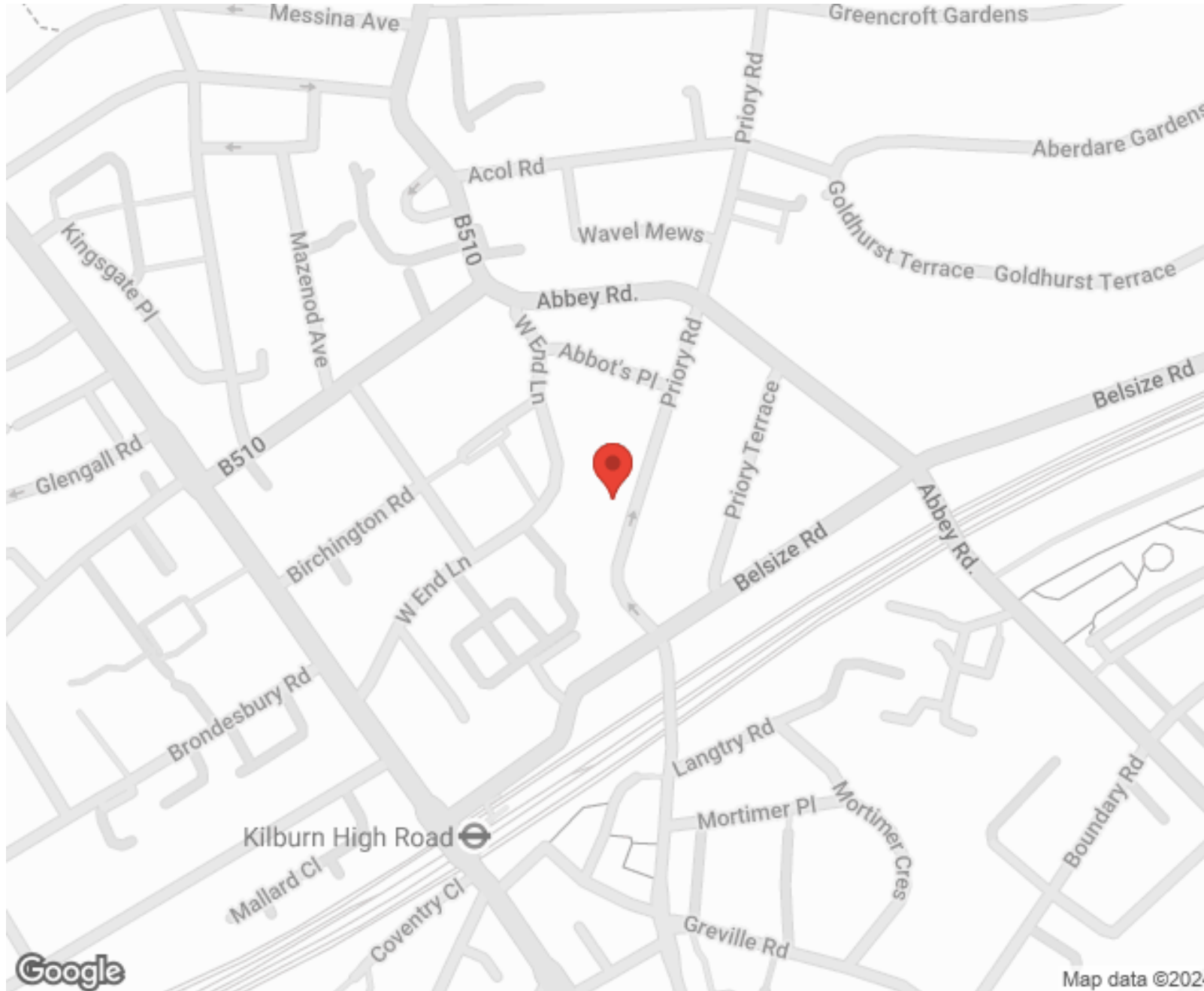


**MORE INFO, PICTURES,  
CONTACT ON  
OUR WEBSITE**



"Vita Properties is a very professional agency. My experience with them was incredible and the entire team was very helpful and kind throughout the renting process. I'd highly recommend!"

---



SCAN FOR MORE  
GOOGLE REVIEWS



Google



4.9 Stars | 132 Reviews

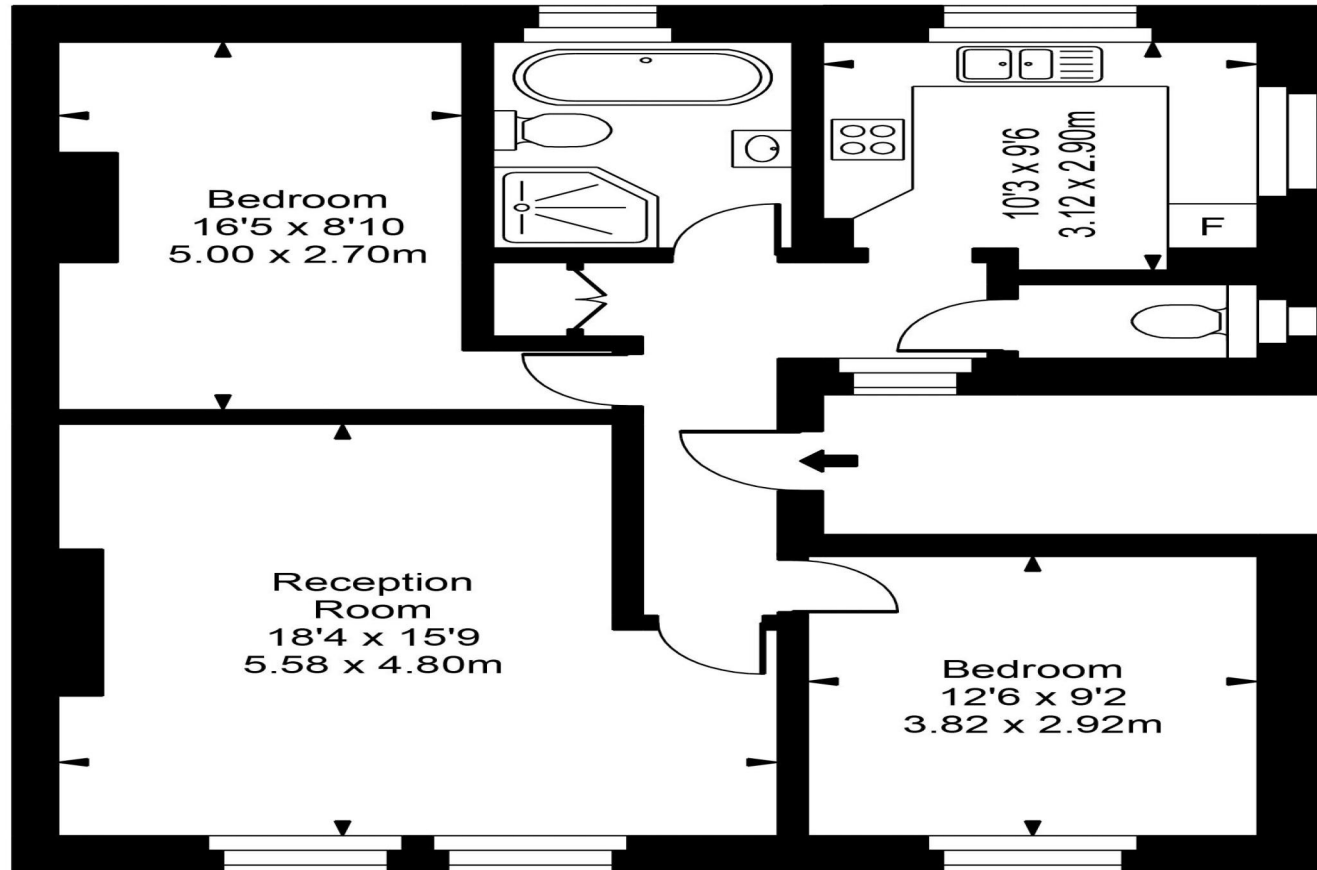
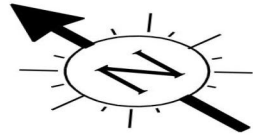
Find us on social media

 vitaproperties

 VitaProperties

 VitaProperties

Priory Road



First Floor



Approx Gross Internal Area

837 Sq Ft - 77.76 Sq M

FOR ILLUSTRATIVE PURPOSES ONLY. NOT TO SCALE.

Whilst every attempt has been made to ensure the accuracy of the floorplan shown, all measurements, positioning, fixtures, fittings and any other data shown are an approximate interpretation for illustrative purposes only and are not to scale. No responsibility is taken for any error, omission, miss-statement or use of data shown.  
Floor plan by [www.bestangle.co.uk](http://www.bestangle.co.uk)