



Lyndhurst Court, Finchley Road, St Johns Wood, London, NW8 .| £650

- Fantastic views across London
- Available 22 November
- Portered
- Moments to Jubilee Line

- Managed
- Council tax - G - £1130 per annum
- Heating and Hot Water is included in the rent
- First come first serve parking

"Vita Properties have been tremendously helpful throughout the process of securing/renting my flat. Informative about the property, prompt communication, easy to use dashboard for sharing of information, and pleasant to work with. Highly recommend!"

Available 22 November - An elegant four bedroom 7th floor apartment situated in this well maintained purpose built block with 24 hour portorage. The property has been fully furnished and boasts 3 good size bedrooms and 1 single, a fully fitted kitchen, a spacious reception with doors opening to a balcony offering fantastic views across London, 2 bathrooms (1 en suite), a guest WC. Lyndhurst Court is located within close proximity to the local amenities and underground stations of both Swiss Cottage and St Johns Wood (Jubilee Line).

Offered furnished or unfurnished - Heating and Hot Water is included in the rent



Oliver Kent

✉ oliver.kent@vitaproperties.uk

☎ +4477 7274 0351



🏠	Flat
🔑	Under Negotiation
🛏️	x 4
🚿	x 1
🚽	x 2



"I was very impressed with Vita and their network of buyers. When the sale of my flat fell through (twice) they worked extremely hard to find new buyers in a difficult market - thank you!"



"Working with Vita properties has been a smooth experience! No complaints at all. Our letting agent, Diana has been fantastic and very helpful throughout the whole process. I would highly recommend both Vita properties and Diana."



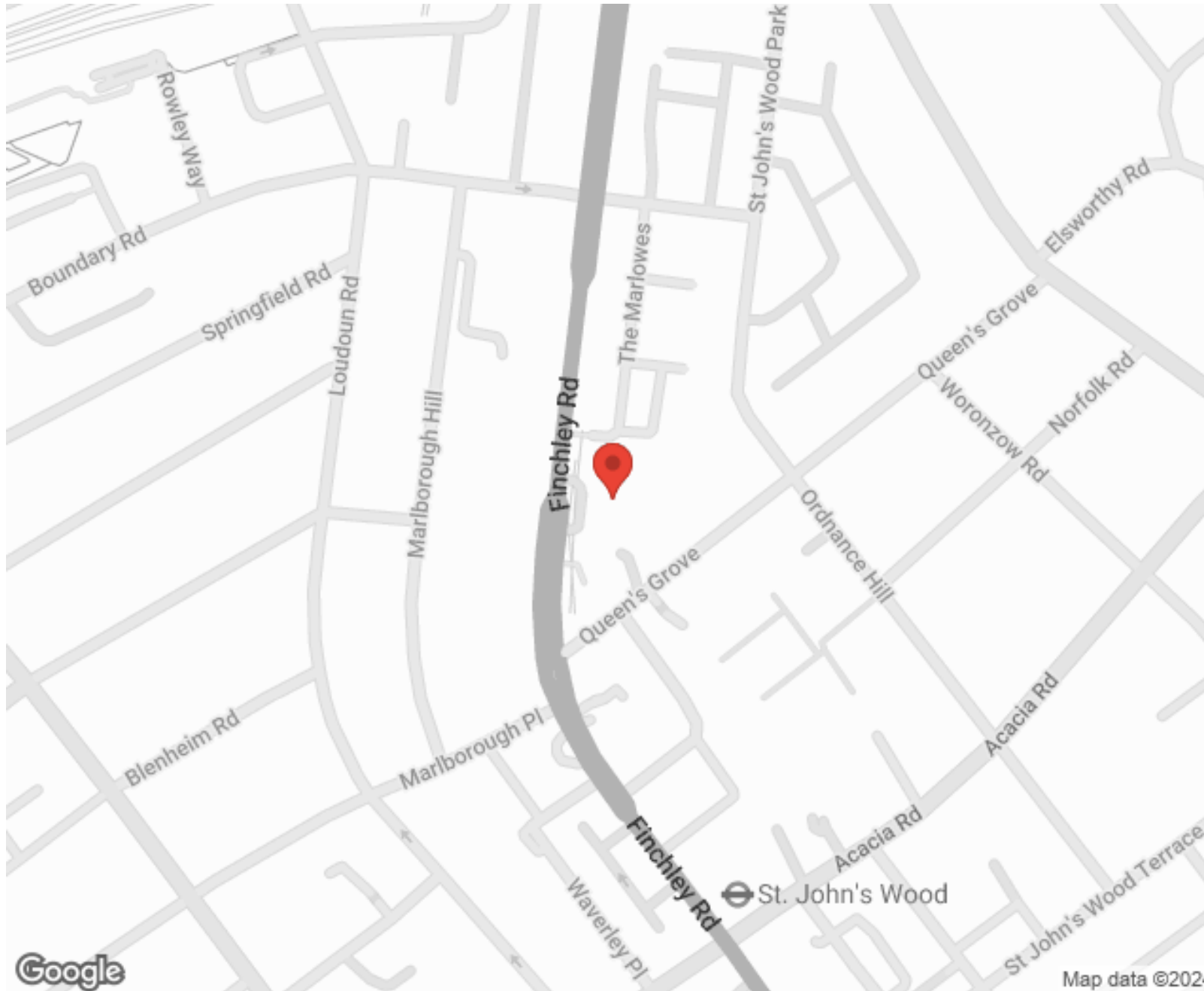
"I used Vita properties to find a flat recently and it was an overall professional, personalised and positive experience. Saira went the extra mile to accommodate to our needs and quick to help us whenever possible."



**MORE INFO, PICTURES,
CONTACT ON
OUR WEBSITE**



"Vita Properties is a very professional agency. My experience with them was incredible and the entire team was very helpful and kind throughout the renting process. I'd highly recommend!"



SCAN FOR MORE
GOOGLE REVIEWS



Google




4.9 Stars | 132 Reviews

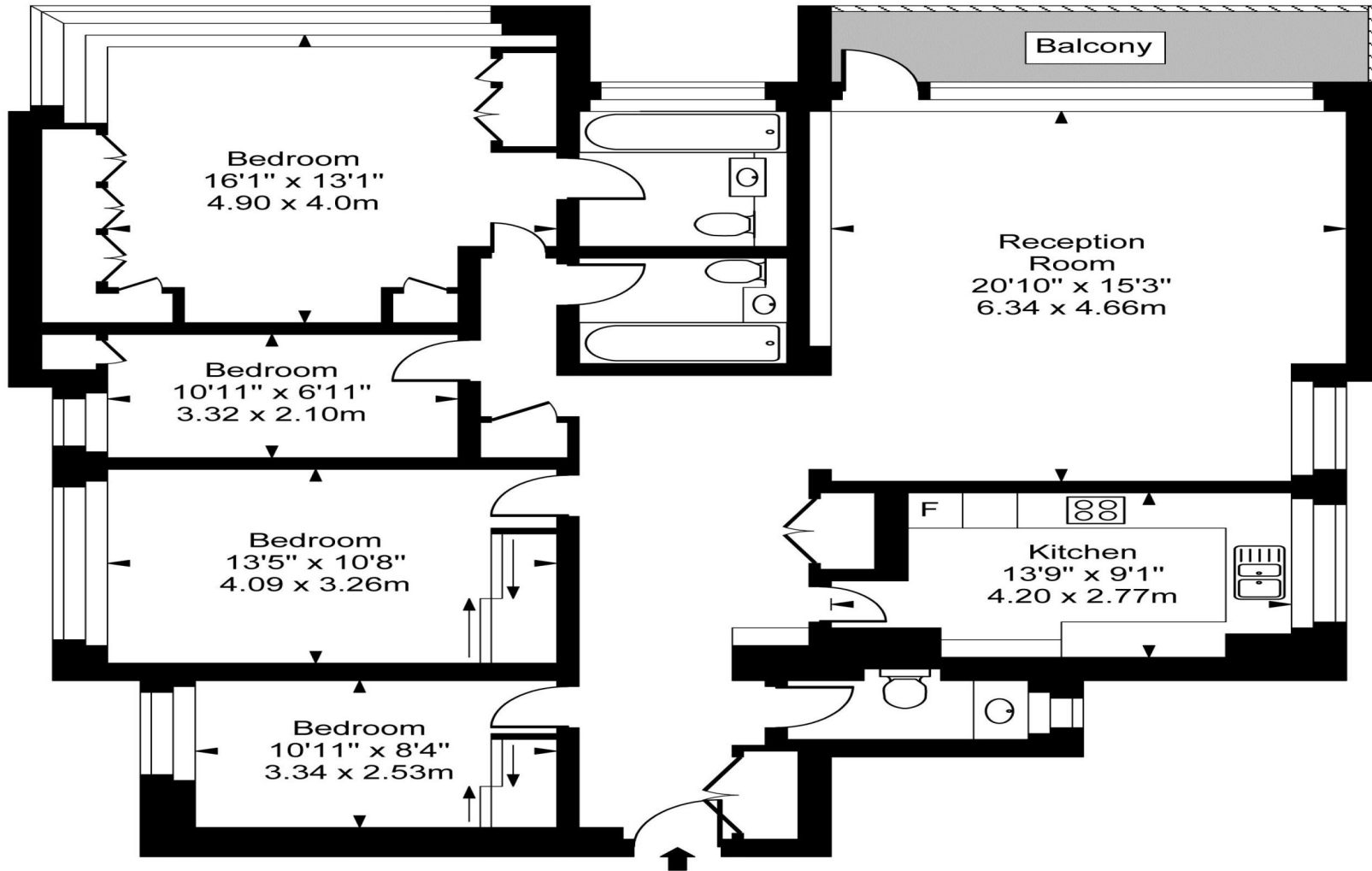
Find us on social media

 vitaproperties

 VitaProperties

 VitaProperties

Lyndshurt Court



Seventh Floor

Approx Gross Internal Area **1443 Sq Ft - 134.09 Sq M**

For Illustration Purposes Only - Not To Scale
Floor plan by www.creativeplanetlk.com