



Belsize Park, Belsize Park, London, NW3 .| £995






- Private roof terrace
- Three bathrooms
- Moments to Swiss Cottage
- Within walking to Belsize Village

- Split level
- Complimentary X-Mas Hamper To All Move In's Before 2019!

"Vita Properties have been tremendously helpful throughout the process of securing/renting my flat. Informative about the property, prompt communication, easy to use dashboard for sharing of information, and pleasant to work with. Highly recommend!"

#### MOVE IN WITH NO TENANT FEE'S -

An exceptionally large, brand newly refurbished four bedroom, three bathroom duplex with a private roof terrace arranged over the second and third floors of an imposing house conversion in the heart of Belsize Park. The property comprises an ample and bright 24' reception room, large separate kitchen, master bedroom with access to terrace, three further bedrooms and three bathrooms (one en-suite). Belsize Park is in a highly desirable area in North central London nestled between Primrose Hill and Hampstead. The area benefits from wide open streets and a village type feel but it is extremely well located for easy access to central London. There is an abundance of parks and open spaces with Hampstead Heath and Primrose Hill both being just a short walk away. The areas many tube stops on both the North and Jubilee lines provide great access to the City & Canary Wharf.

-  Flat
-  Available to Let
-  x 4
-  x 1
-  x 3



Oliver Kent

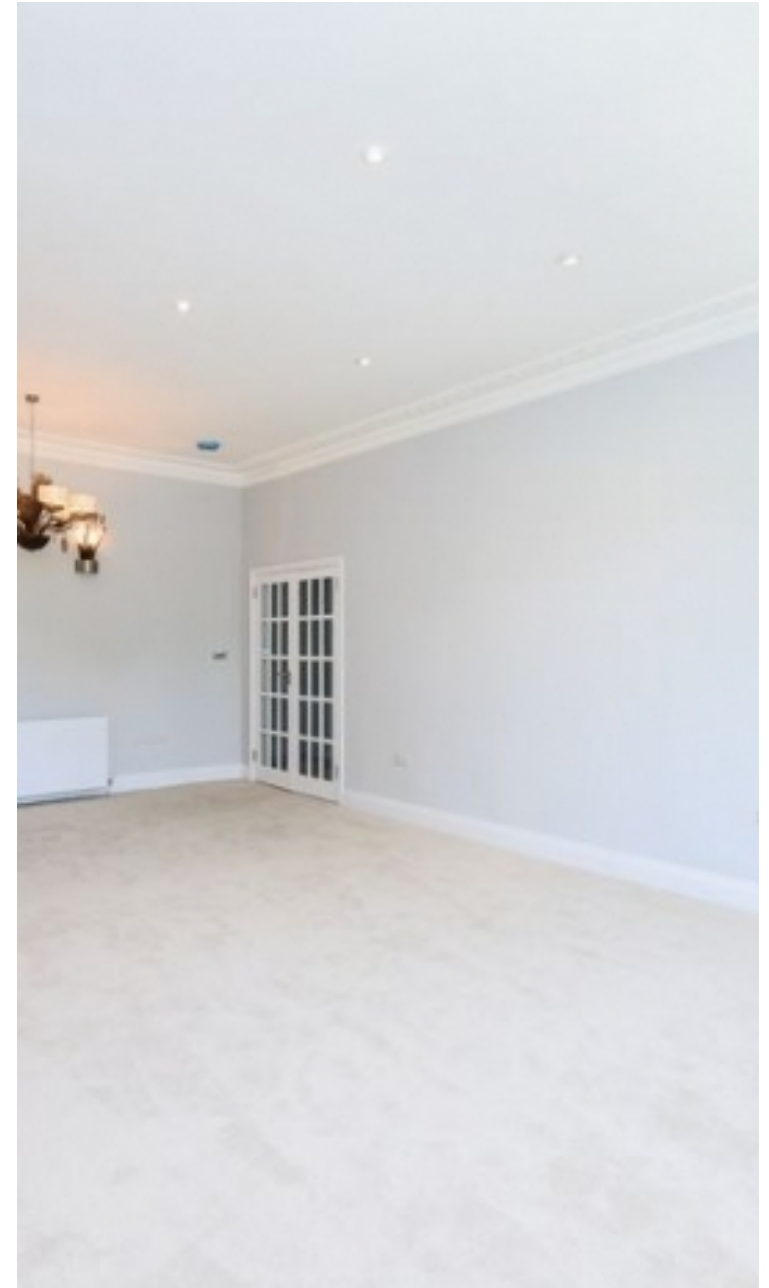
 [oliver.kent@vitaproperties.uk](mailto:oliver.kent@vitaproperties.uk)

 +4477 7274 0351



"I was very impressed with Vita and their network of buyers. When the sale of my flat fell through (twice) they worked extremely hard to find new buyers in a difficult market - thank you!"

---



"Working with Vita properties has been a smooth experience! No complaints at all. Our letting agent, Diana has been fantastic and very helpful throughout the whole process. I would highly recommend both Vita properties and Diana."

---





"I used Vita properties to find a flat recently and it was an overall professional, personalised and positive experience. Saira went the extra mile to accommodate to our needs and quick to help us whenever possible."

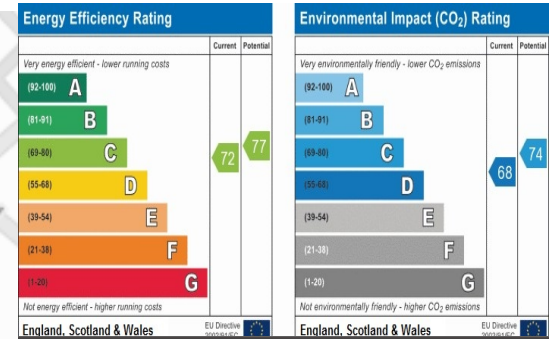
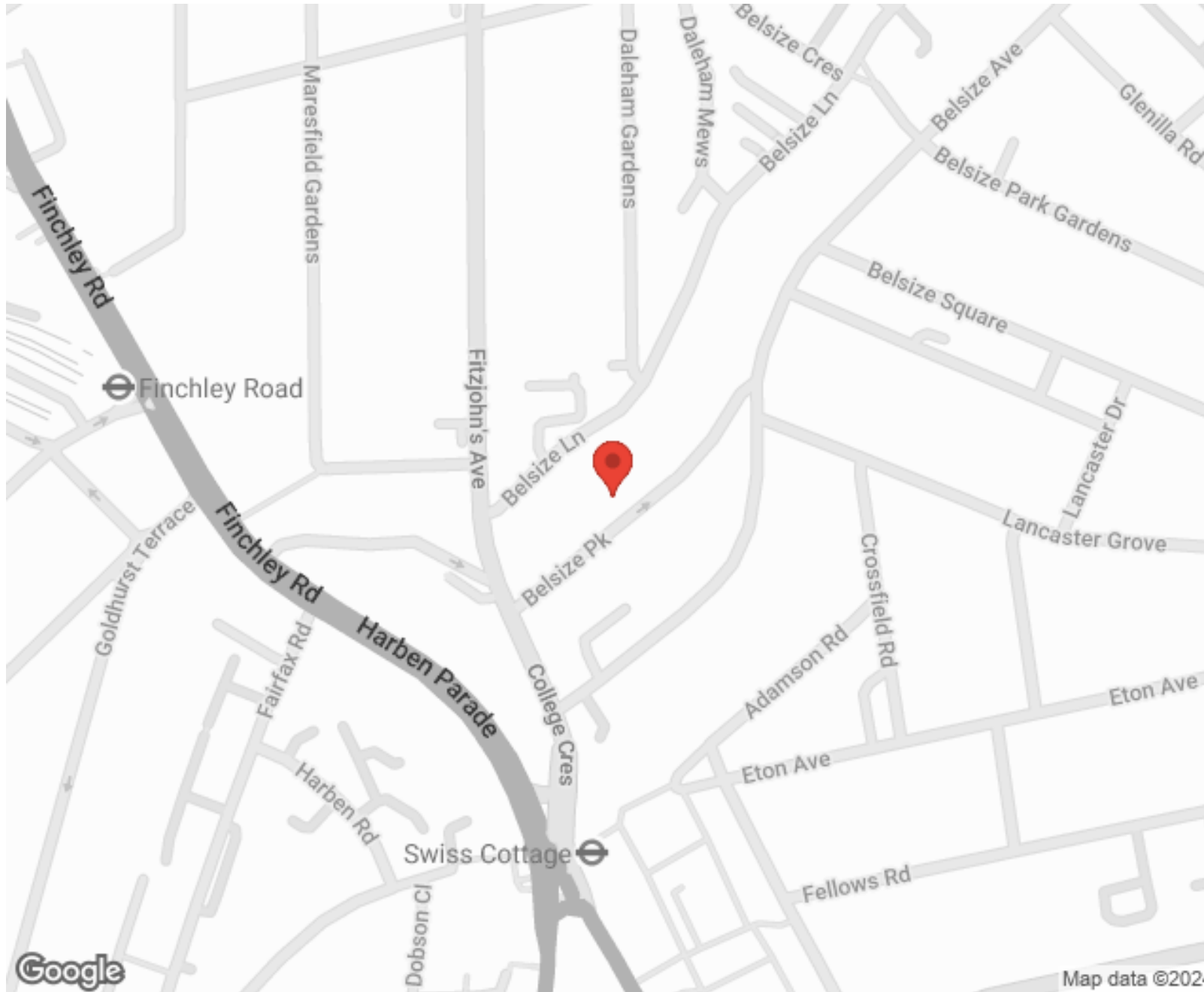
---



**MORE INFO, PICTURES,  
CONTACT ON  
OUR WEBSITE**



"Vita Properties is a very professional agency. My experience with them was incredible and the entire team was very helpful and kind throughout the renting process. I'd highly recommend!"

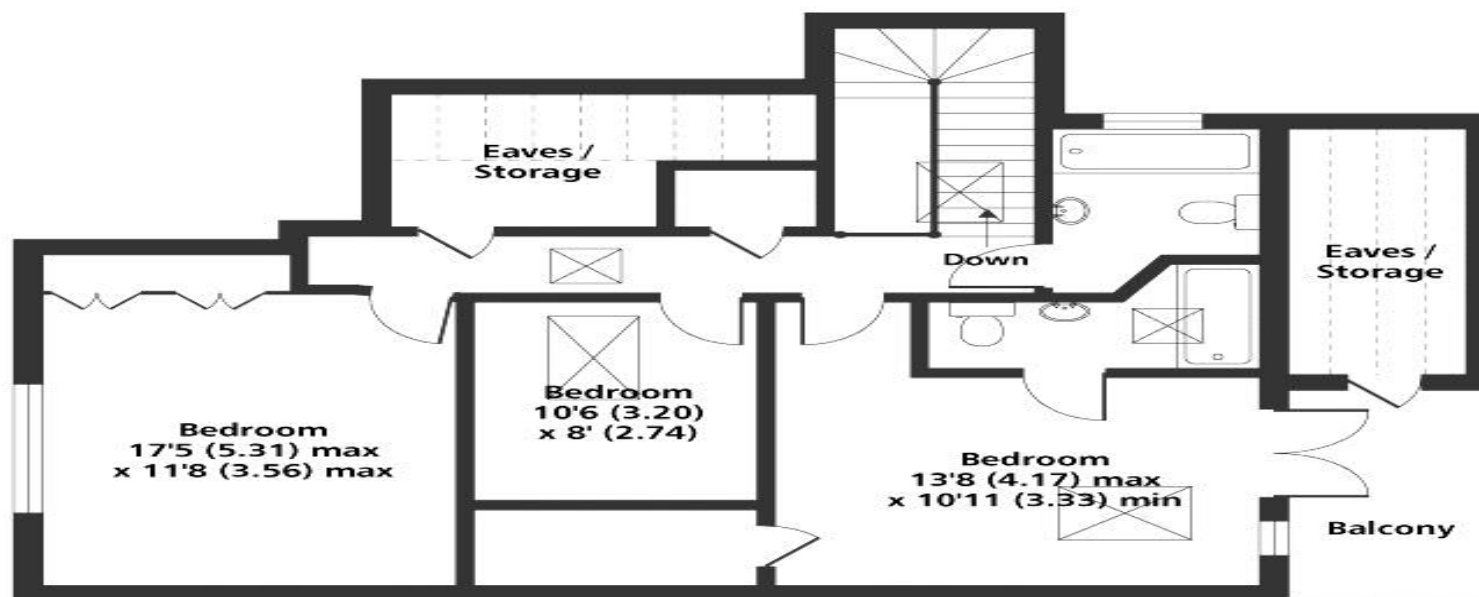


SCAN FOR MORE GOOGLE REVIEWS

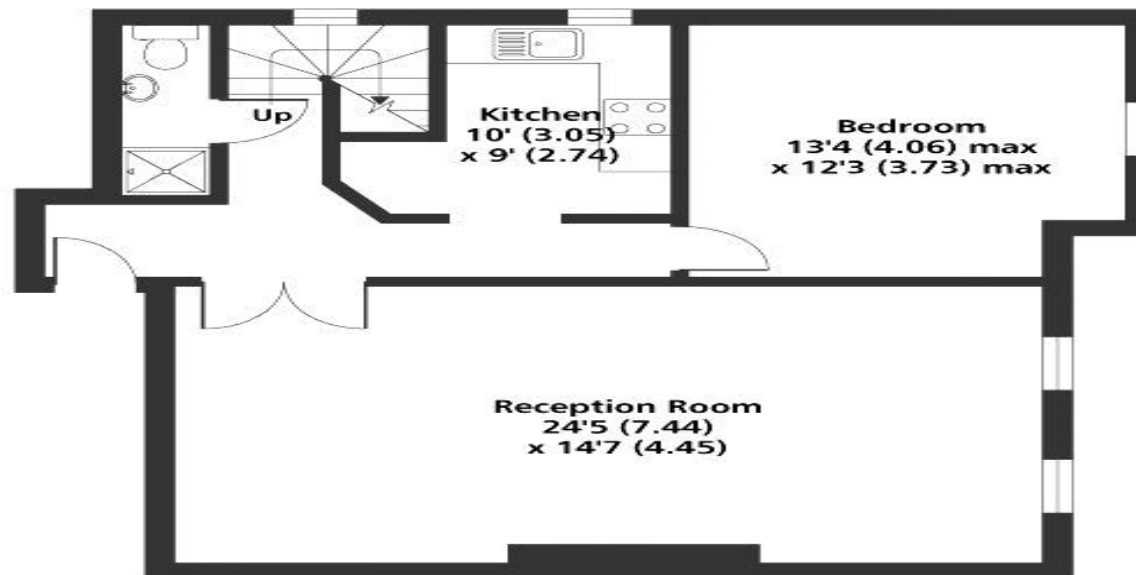
Google  
★★★★★  
4.9 Stars | 132 Reviews

Find us on social media

- vitaproperties
- VitaProperties
- VitaProperties



Third Floor



Second Floor

Denotes restricted head height

**Belsize Park NW3**  
**Total internal floor area (Includes restricted head height)**  
**1645 sq ft 152.8 sq metres**