



Greville Place, Maida Vale, London, NW6 .| £800,000

- Cafe's, restaurants and shop are all within a mins walk
- 76 sq meters
- Lift
- Porter

- Chain free
- Share of freehold

"Vita Properties have been tremendously helpful throughout the process of securing/renting my flat. Informative about the property, prompt communication, easy to use dashboard for sharing of information, and pleasant to work with. Highly recommend!"

This spectacular apartment oozes the WOW factor. Brilliantly designed and refurbished by a renowned designer, this 825 square foot 2 bedroom apartment situated on the first floor of a well regarded mansion block with lift and porter has been totally transformed. Fitted with state of the art bathrooms, the latest appliances, coved ceilings and mood lighting throughout, this apartment offers a bright, modern and stylish finish making it the perfect turnkey property. Natural light, spectacular living areas and unlimited luxury are the hallmarks of this stunning apartment. The lavish master bedroom and ensuite convey consummate comfort along with a second large bedroom with built in robes.

The apartment is conveniently located within easy reach of the Bakerloo (Maida Vale and Kilburn) and Jubilee Lines (St Johns wood), the Overground (Kilburn High road) and the buses on both Maida Vale and Abbey Road.

You will love living in this premier location so close to top schools, bars, cafes, restaurants, St Johns Wood high street and the iconic Paddington Recreation Ground with its children's and sporting facilities.



Oliver Kent

✉ oliver.kent@vitaproperties.uk
☎ +4477 7274 0351



"I was very impressed with Vita and their network of buyers. When the sale of my flat fell through (twice) they worked extremely hard to find new buyers in a difficult market - thank you!"



"Working with Vita properties has been a smooth experience! No complaints at all. Our letting agent, Diana has been fantastic and very helpful throughout the whole process. I would highly recommend both Vita properties and Diana."



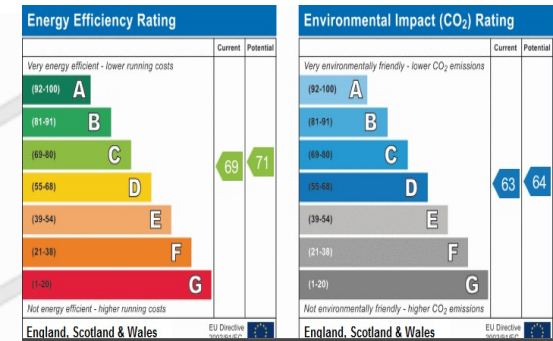
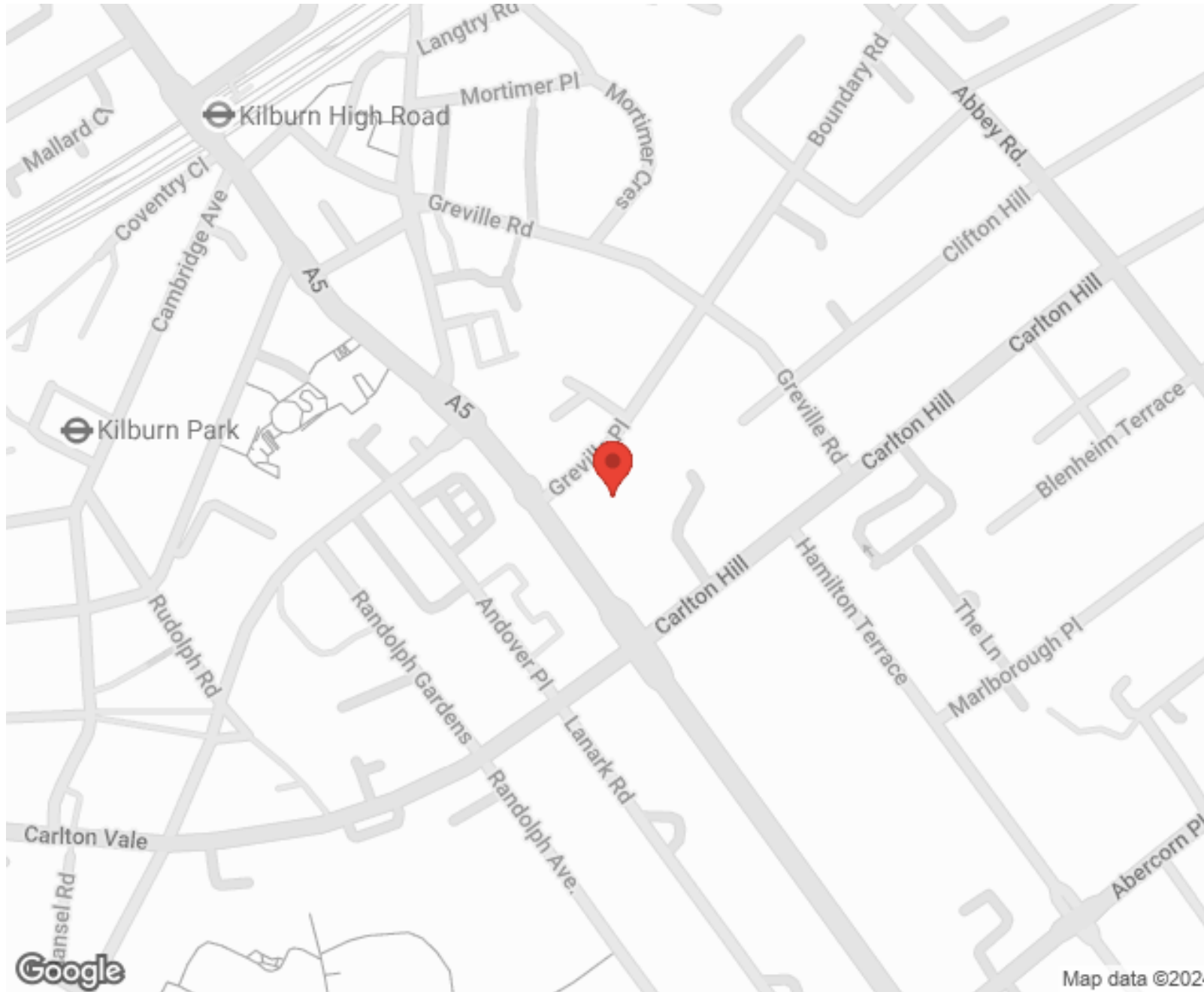
"I used Vita properties to find a flat recently and it was an overall professional, personalised and positive experience. Saira went the extra mile to accommodate to our needs and quick to help us whenever possible."



**MORE INFO, PICTURES,
CONTACT ON
OUR WEBSITE**



"Vita Properties is a very professional agency. My experience with them was incredible and the entire team was very helpful and kind throughout the renting process. I'd highly recommend!"



SCAN FOR MORE
GOOGLE REVIEWS



Google



4.9 Stars | 132 Reviews

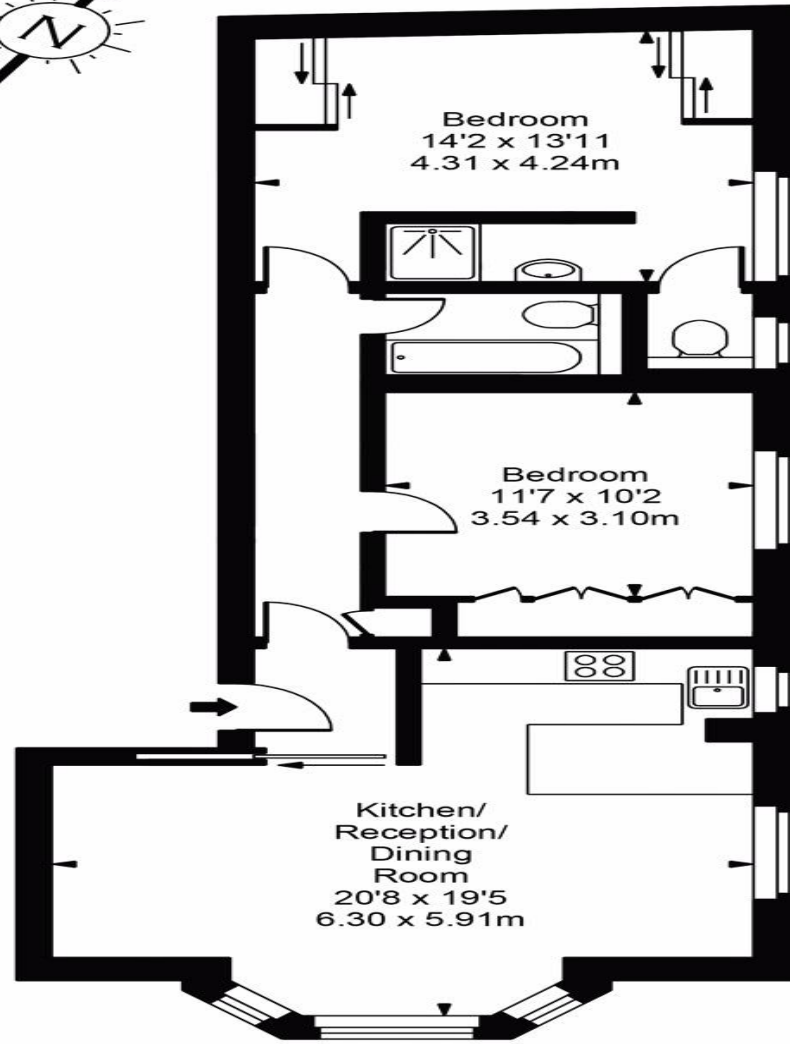
Find us on social media

- vitaproperties
- VitaProperties
- VitaProperties



Map data ©2024

Greville Hall



First Floor



Approx Gross Internal Area **825 Sq Ft - 76.66 Sq M**

For Illustration Purposes Only - Not To Scale
Floor plan by www.bestangle.co.uk