



Yale Court, Honeybourne Road, West Hampstead, London, NW6 .| £485

- Double aspect living room
- Within moments to shops and cafe's of West End Lane
- Offered unfurnished or furnished
- Fitted eat in kitchen

- 5 mins to all West Hampstead's transport links
- Available 15 May

"Vita Properties have been tremendously helpful throughout the process of securing/renting my flat. Informative about the property, prompt communication, easy to use dashboard for sharing of information, and pleasant to work with. Highly recommend!"

Available 15 May - Vita Properties are delighted to present a bright and spacious 2 double bedroom apartment, set on the 1st floor of this prestigious Mansion building in the heart of West Hampstead. Located within under a 3 minute stroll of West End Lane and within 5 minutes of West Hampstead Jubilee Line (zone 2), Thames Link and Silver Link over ground services, accommodation comprises a 14'4 x 13'9 reception/dining room with feature fireplace and alcove shelving, 2 double bedrooms (12'7 x 10'8 and 10'11 x 8'1), fully tiled bathroom and fitted eat-in kitchen. Fitted storage and neutral decor. Offered unfurnished or furnished.



Oliver Kent

✉ oliver.kent@vitaproperties.uk

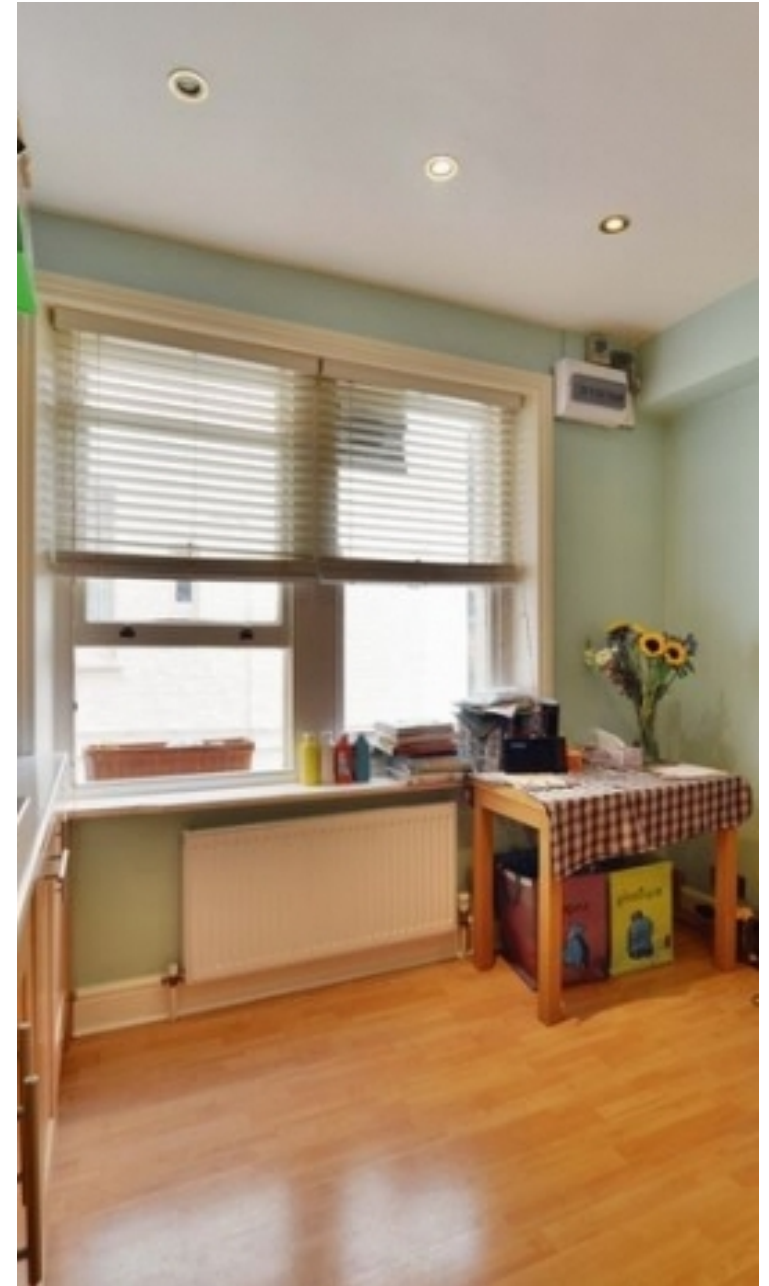
☎ +4477 7274 0351



🏠	Flat
🔑	Available to Let
🛏	x 2
🛋	x 1
🚿	x 1



"I was very impressed with Vita and their network of buyers. When the sale of my flat fell through (twice) they worked extremely hard to find new buyers in a difficult market - thank you!"



"Working with Vita properties has been a smooth experience! No complaints at all. Our letting agent, Diana has been fantastic and very helpful throughout the whole process. I would highly recommend both Vita properties and Diana."



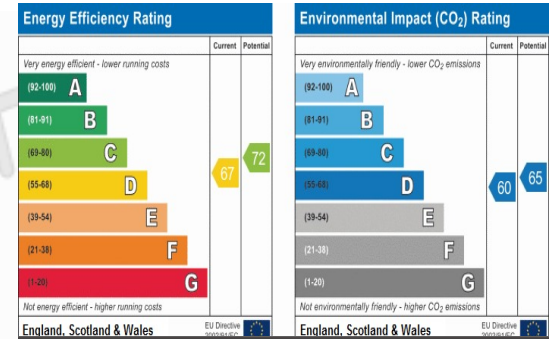
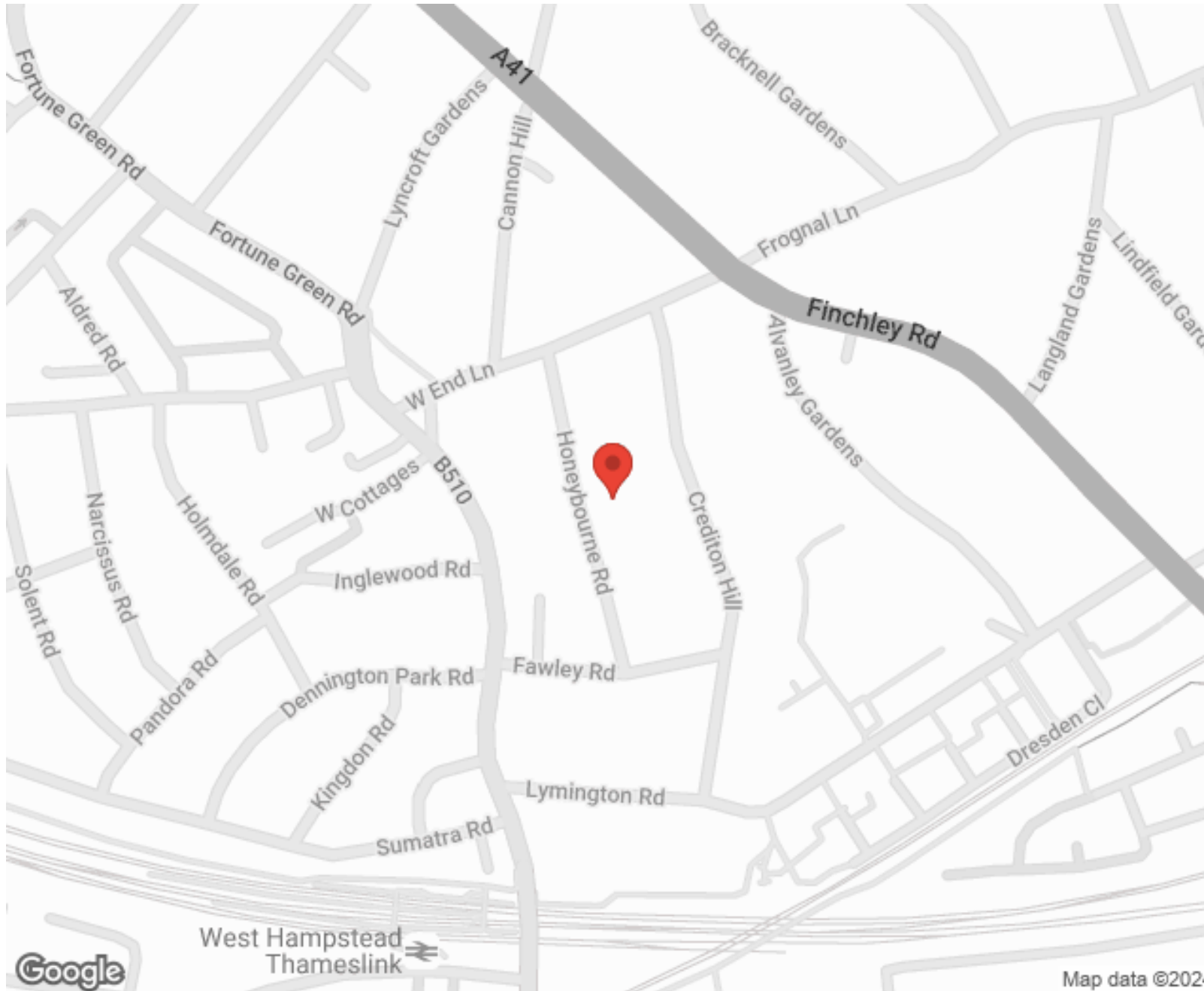
"I used Vita properties to find a flat recently and it was an overall professional, personalised and positive experience. Saira went the extra mile to accommodate to our needs and quick to help us whenever possible."



**MORE INFO, PICTURES,
CONTACT ON
OUR WEBSITE**



"Vita Properties is a very professional agency. My experience with them was incredible and the entire team was very helpful and kind throughout the renting process. I'd highly recommend!"



SCAN FOR MORE
GOOGLE REVIEWS



Google

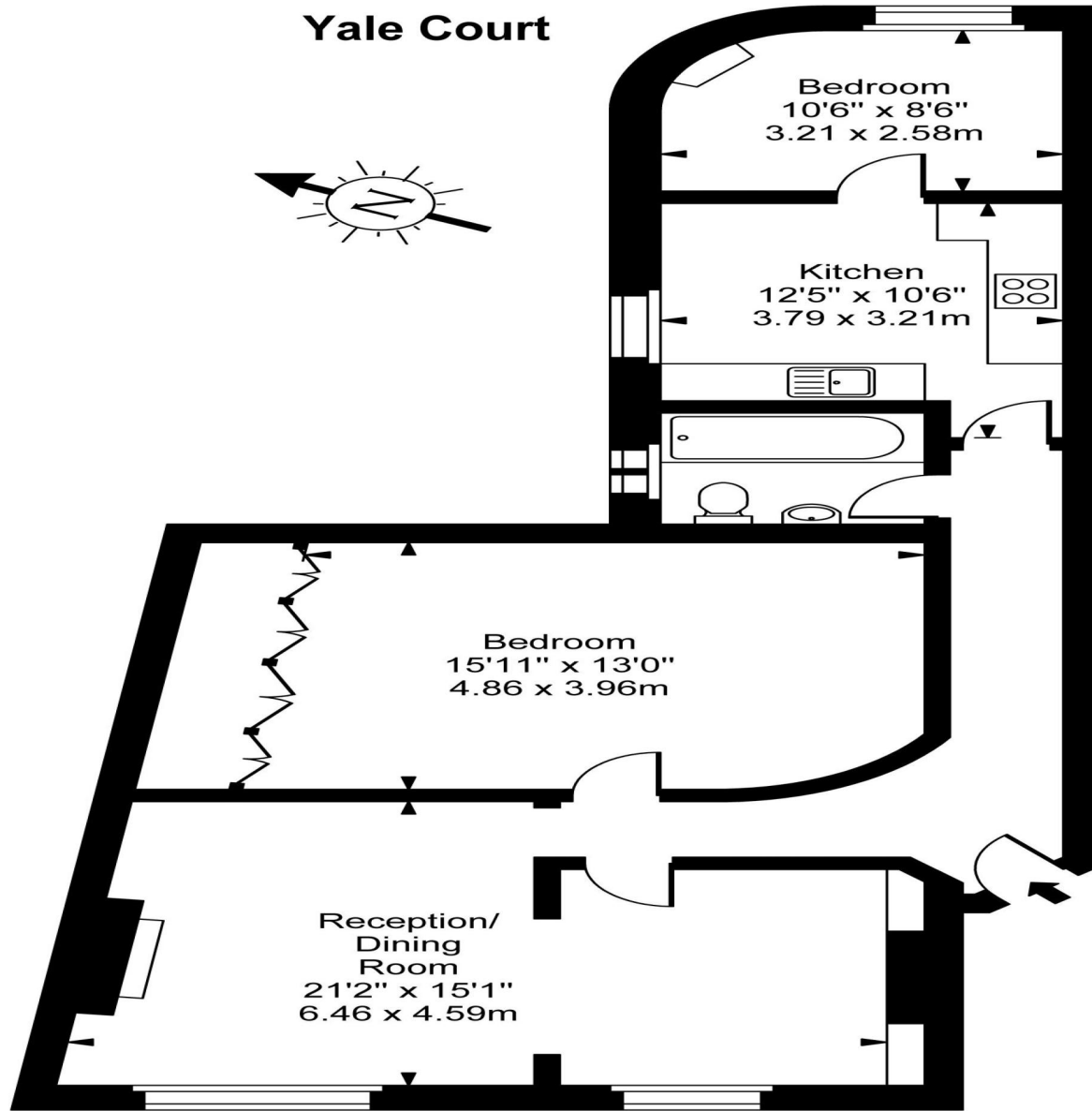
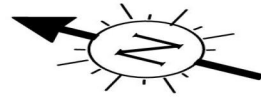


4.9 Stars | 132 Reviews

Find us on social media

- vitaproperties
- VitaProperties
- VitaProperties

Yale Court



Approx Gross Internal Area **946 Sq Ft - 87.88 Sq M**

For Illustration Purposes Only - Not To Scale
Floor plan by www.creativeplanetlk.com