



Chevening Road, Queens Park, London. NW6 .| £385

- 2 Double Bedrooms
- Newly renovated
- Available immediately
- Managed

- Council tax - D - £1358 per annum

"Vita Properties have been tremendously helpful throughout the process of securing/renting my flat. Informative about the property, prompt communication, easy to use dashboard for sharing of information, and pleasant to work with. Highly recommend!"

Available immediately is this two double bedroom flat within a detached Victorian corner house. The property is situated opposite Queens Park and has magnificent views overlooking this beautiful green open space. The flat comprises two double bedrooms, a spacious and bright lounge, fully fitted kitchen, tiled bathroom, entry phone and gas central heating. Queens Park is within a conservation area and Salusbury Road is at the heart of it, with Queens Park tube (Bakerloo line. Zone 2), National Rail and bus routes into the West End.

Offered furnished or unfurnished



Oliver Kent

✉ oliver.kent@vitaproperties.uk

☎ +4477 7274 0351



🏠	Flat
🔑	Available to Let
🛏️	x 2
🛋️	x 1
📞	x 1



"I was very impressed with Vita and their network of buyers. When the sale of my flat fell through (twice) they worked extremely hard to find new buyers in a difficult market - thank you!"



"Working with Vita properties has been a smooth experience! No complaints at all. Our letting agent, Diana has been fantastic and very helpful throughout the whole process. I would highly recommend both Vita properties and Diana."



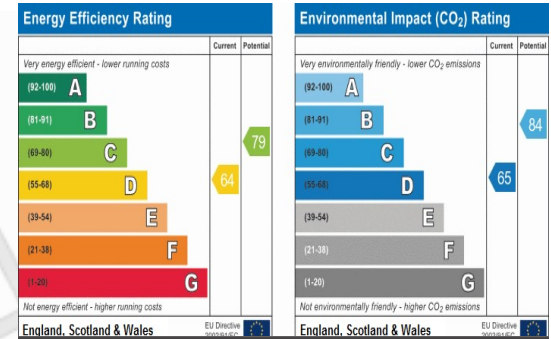
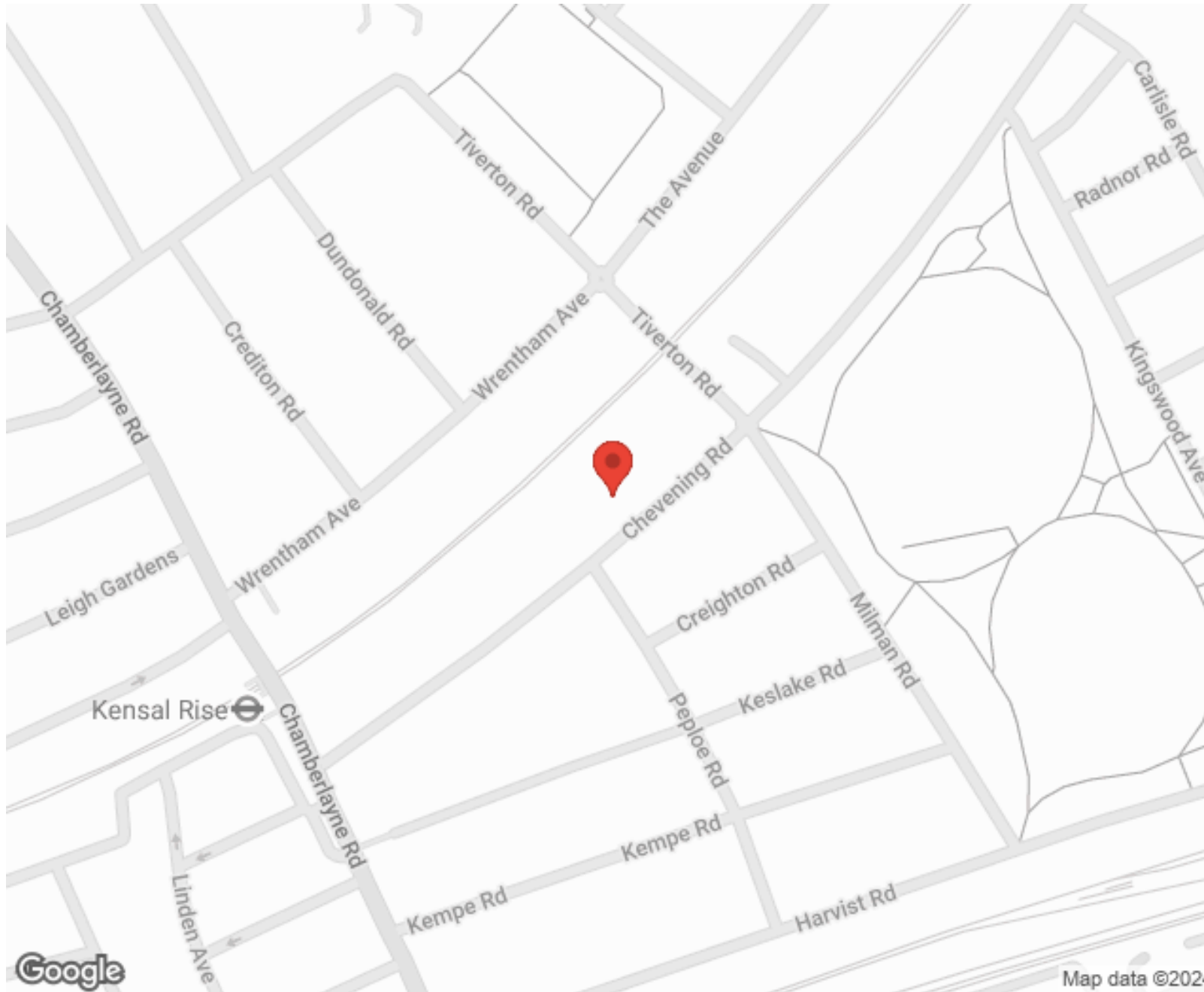
"I used Vita properties to find a flat recently and it was an overall professional, personalised and positive experience. Saira went the extra mile to accommodate to our needs and quick to help us whenever possible."



**MORE INFO, PICTURES,
CONTACT ON
OUR WEBSITE**



"Vita Properties is a very professional agency. My experience with them was incredible and the entire team was very helpful and kind throughout the renting process. I'd highly recommend!"



SCAN FOR MORE
GOOGLE REVIEWS






Google

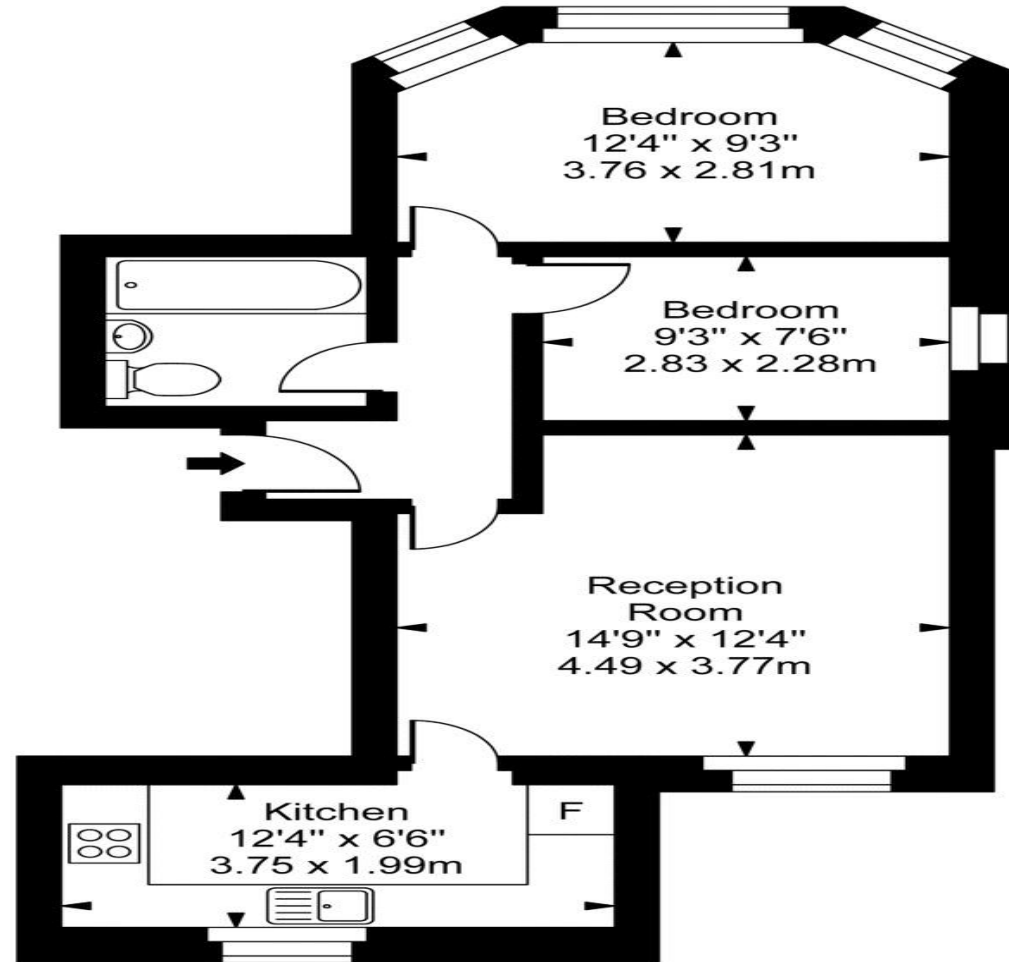


4.9 Stars | 132 Reviews

Find us on social media

-  vitaproperties
-  VitaProperties
-  VitaProperties

Chevening Road



First Floor

Approx Gross Internal Area **548 Sq Ft - 50.94 Sq M**

For Illustration Purposes Only - Not To Scale
Floor plan by www.creativeplanetlk.com