



Redington Road, Hampstead, London, NW3 .| £360

- 1st Floor
- Modern Tiled Bathroom
- Seconds to Hampstead Heath
- Eat in Kitchen with all Mod Cons

- Rental includes water rates
- Council tax band E - £1624 per annum

"Vita Properties have been tremendously helpful throughout the process of securing/renting my flat. Informative about the property, prompt communication, easy to use dashboard for sharing of information, and pleasant to work with. Highly recommend!"

Available 13th October - Furnished -
A super stylish first floor one bedroom apartment set in an immaculate large Victorian house in this prime location close to Hampstead Heath and within walking distance of Hampstead Village. Accommodation comprises entrance hall, reception room, fully fitted kitchen with breakfast bar, master bedroom, en-suite bathroom. Rental includes water rates.



Oliver Kent

✉ oliver.kent@vitaproperties.uk

☎ +4477 7274 0351



- 🏠 Flat
- 🔑 Available to Let
- 🛏 x 1
- 🚿 x 1
- 🚽 x 1



"I was very impressed with Vita and their network of buyers. When the sale of my flat fell through (twice) they worked extremely hard to find new buyers in a difficult market - thank you!"



"Working with Vita properties has been a smooth experience! No complaints at all. Our letting agent, Diana has been fantastic and very helpful throughout the whole process. I would highly recommend both Vita properties and Diana."



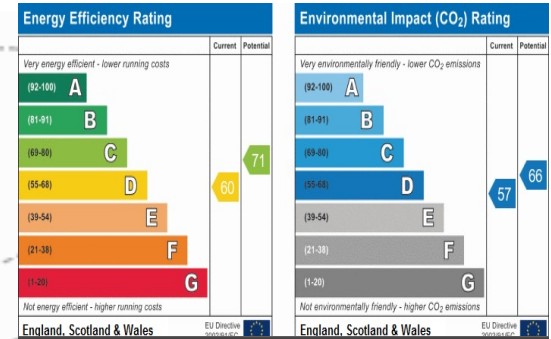
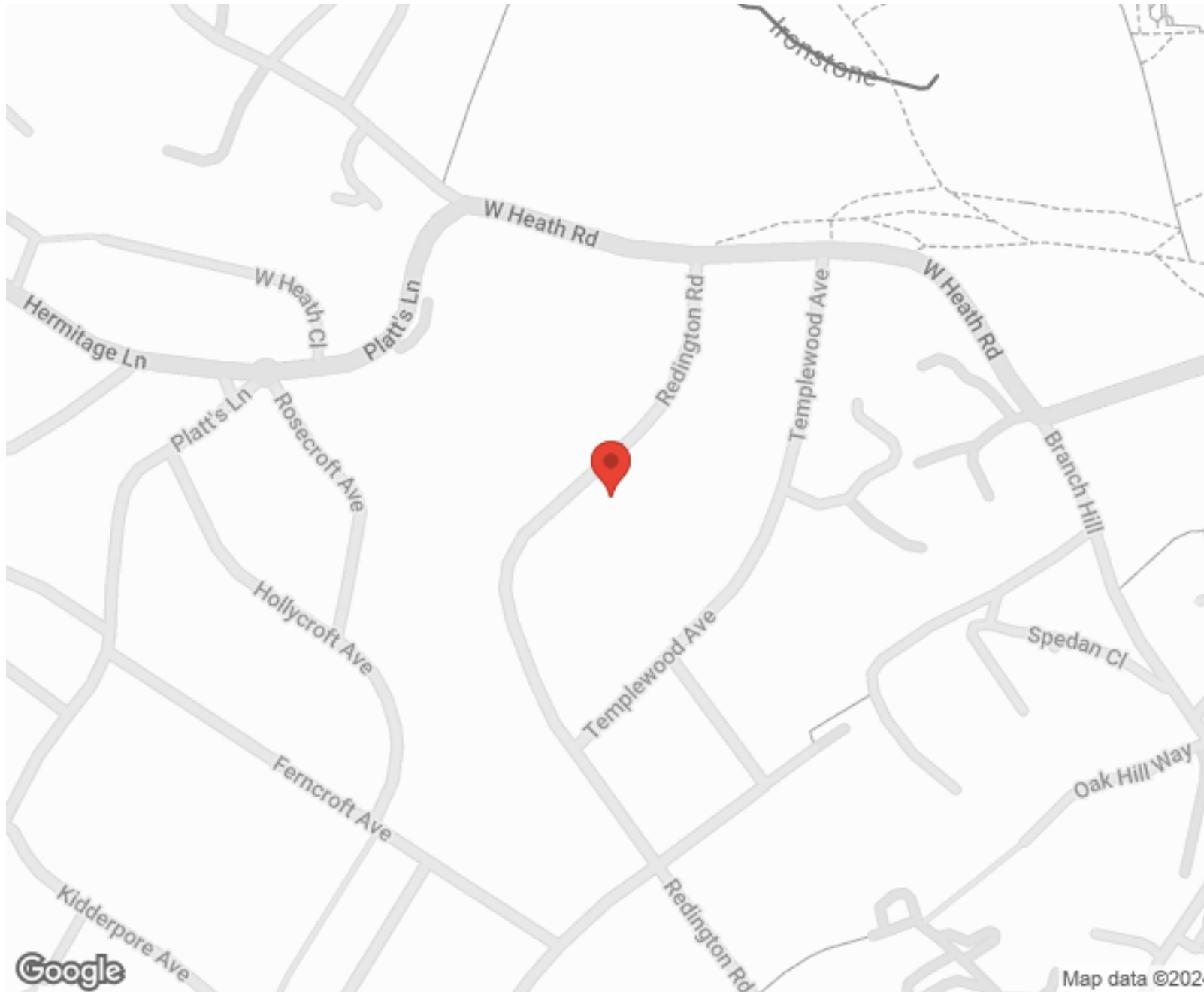
"I used Vita properties to find a flat recently and it was an overall professional, personalised and positive experience. Saira went the extra mile to accommodate to our needs and quick to help us whenever possible."



**MORE INFO, PICTURES,
CONTACT ON
OUR WEBSITE**



"Vita Properties is a very professional agency. My experience with them was incredible and the entire team was very helpful and kind throughout the renting process. I'd highly recommend!"



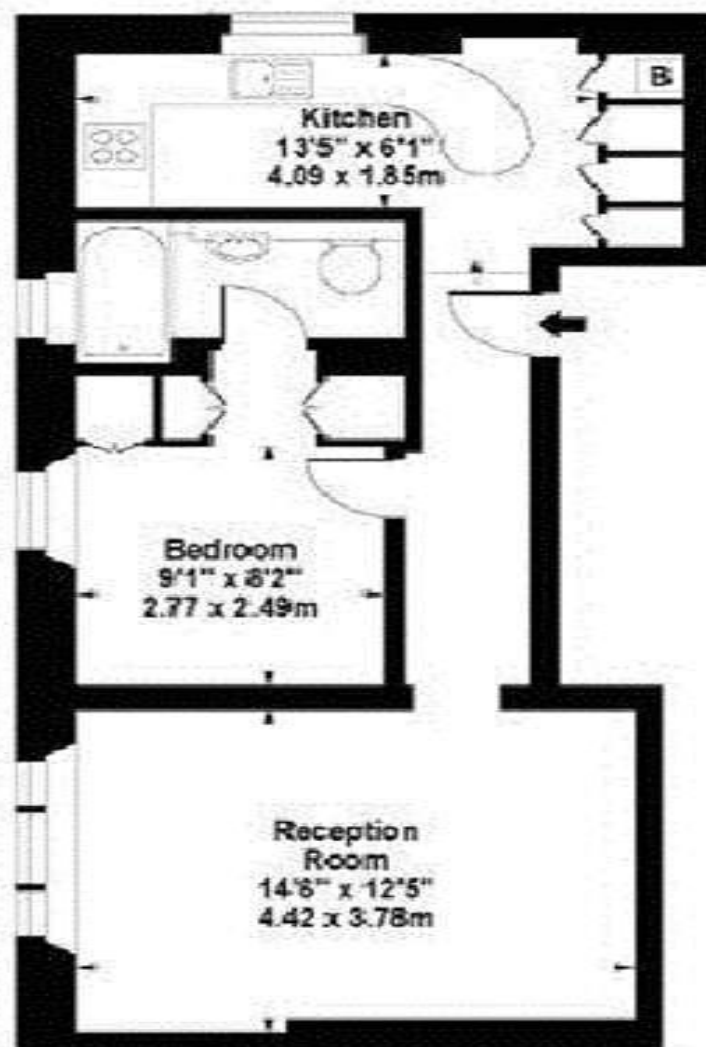
SCAN FOR MORE GOOGLE REVIEWS

Google
★★★★★
4.9 Stars | 132 Reviews

Find us on social media

- vitaproperties
- VitaProperties
- VitaProperties

REDINGTON ROAD, NW3



First Floor

Approx Gross Internal Area 520 Sq Ft - 48.31 Sq M

For Illustration Purposes Only - Not To Scale