



Bracknell Gardens, Hampstead, London, NW3 .| £625

- Modern
- Top Floor
- Wooden Floors
- Moments to Shops and Transport

- Two Double Bedrooms
- Available 07 November 2022

"Vita Properties have been tremendously helpful throughout the process of securing/renting my flat. Informative about the property, prompt communication, easy to use dashboard for sharing of information, and pleasant to work with. Highly recommend!"

A Bright & Spacious - Immaculate
Two Double Bedroom Top Floor Flat
- Two Bathrooms (1 En Suite) -
Located in the quiet back streets
between Hampstead & the Finchley
Road - Wood Floored Reception
Room - Large Modern Open Plan
Kitchen - Available 7th November -
Unfurnished



Oliver Kent

✉ oliver.kent@vitaproperties.uk

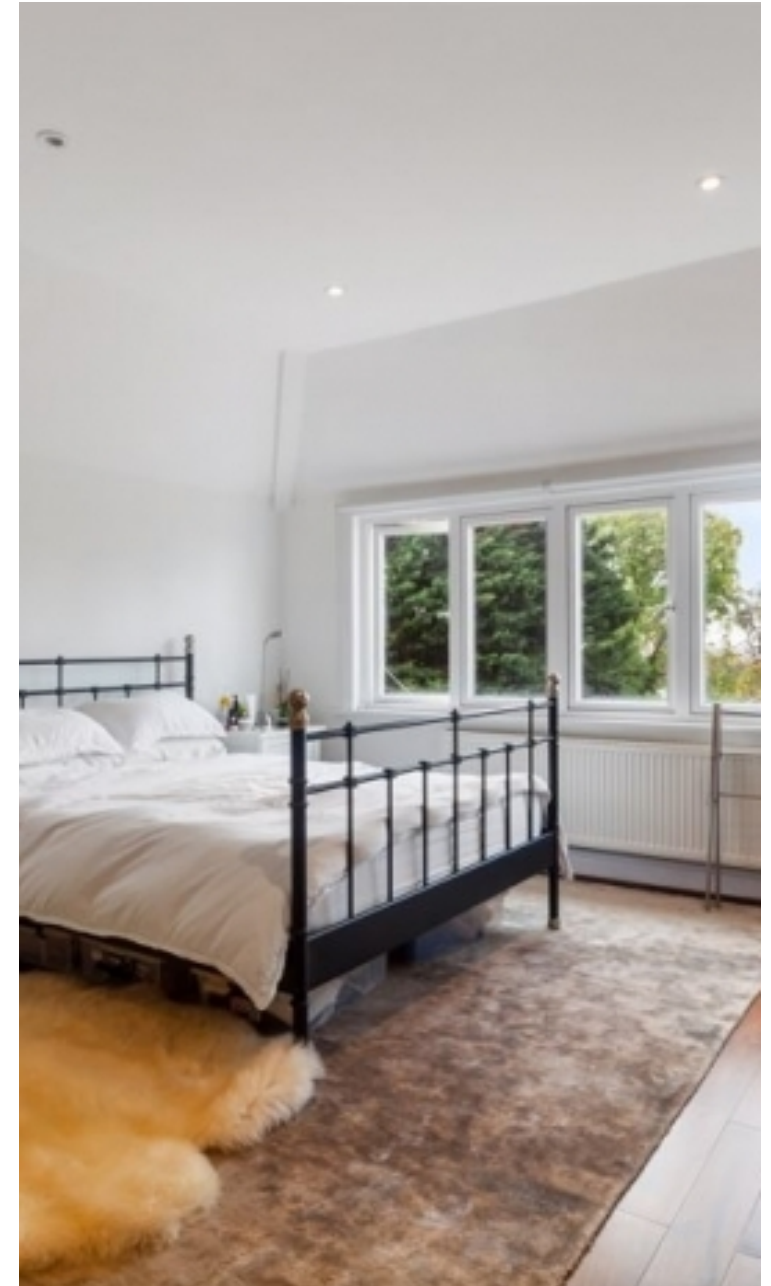
☎ +4477 7274 0351



🏠 Flat
🔑 Under
Negotiation
🛏 x 2
🛏 x 1
🚿 x 2



"I was very impressed with Vita and their network of buyers. When the sale of my flat fell through (twice) they worked extremely hard to find new buyers in a difficult market - thank you!"



"Working with Vita properties has been a smooth experience! No complaints at all. Our letting agent, Diana has been fantastic and very helpful throughout the whole process. I would highly recommend both Vita properties and Diana."



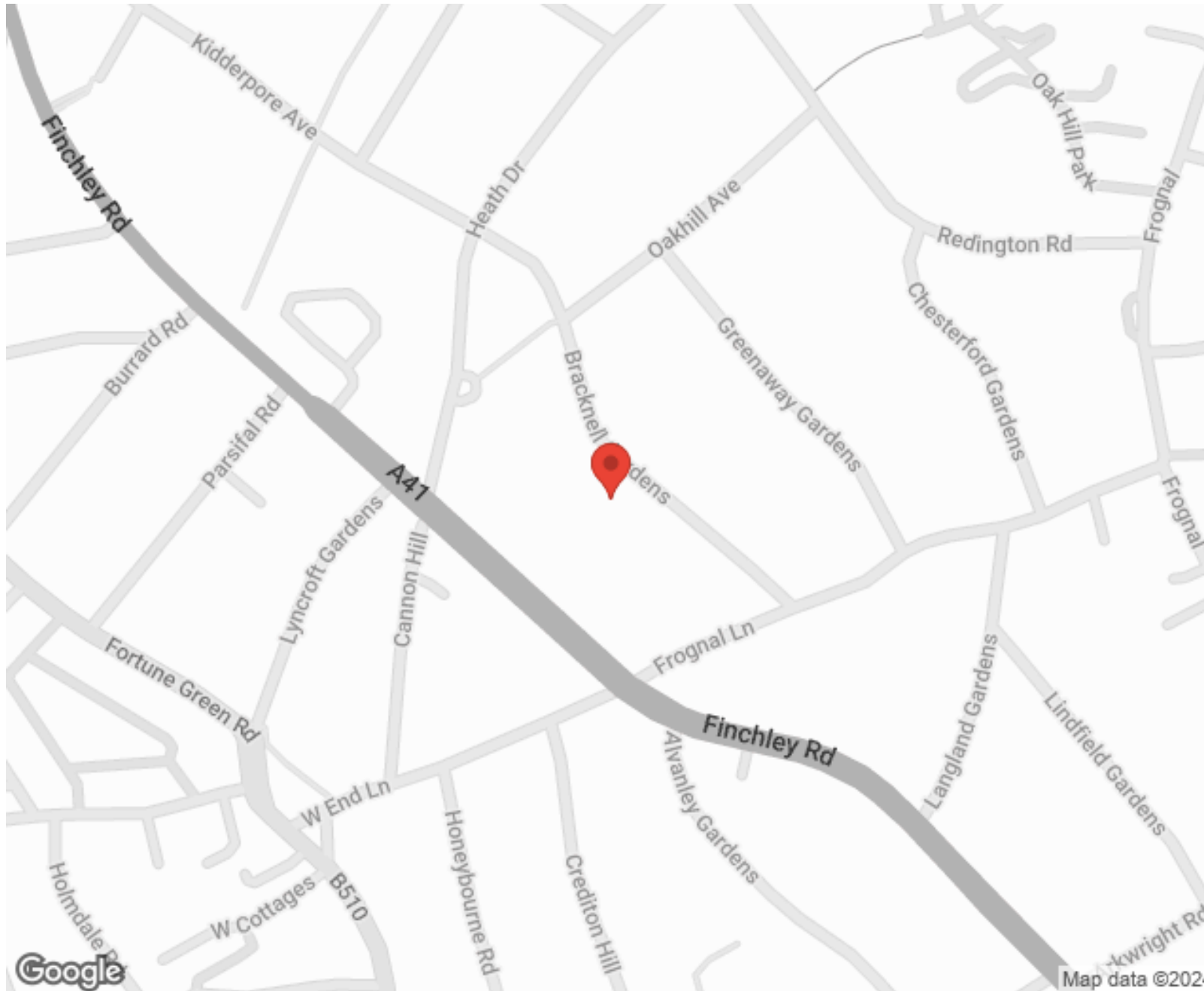
"I used Vita properties to find a flat recently and it was an overall professional, personalised and positive experience. Saira went the extra mile to accommodate to our needs and quick to help us whenever possible."



**MORE INFO, PICTURES,
CONTACT ON
OUR WEBSITE**



"Vita Properties is a very professional agency. My experience with them was incredible and the entire team was very helpful and kind throughout the renting process. I'd highly recommend!"



SCAN FOR MORE
GOOGLE REVIEWS






Google

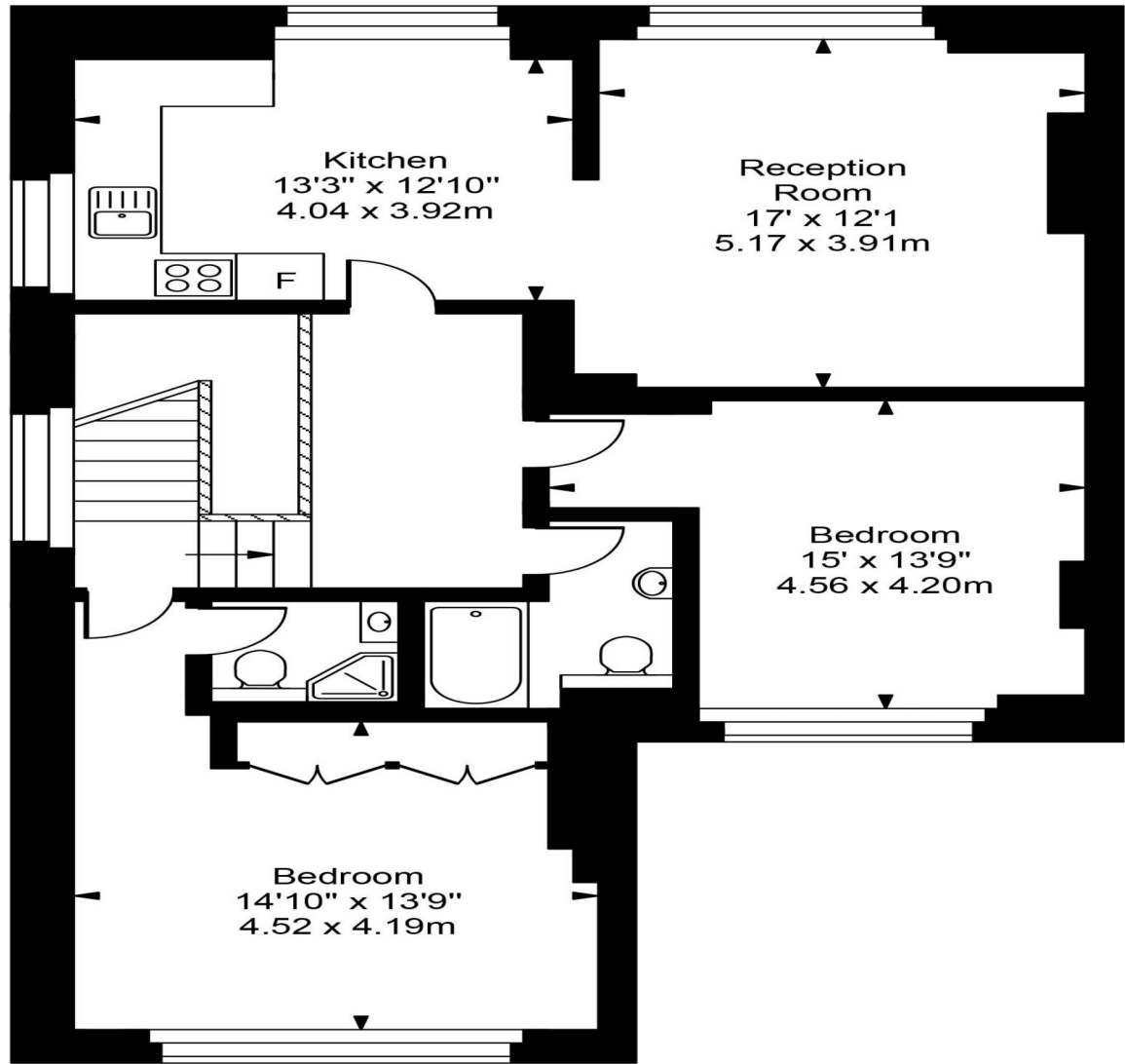
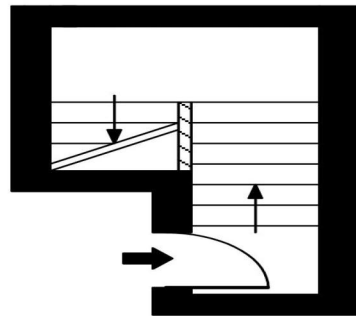
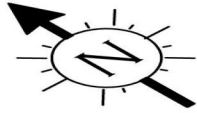


4.9 Stars | 132 Reviews

Find us on social media

-  vitaproperties
-  VitaProperties
-  VitaProperties

Bracknell Gardens



Approx Gross Internal Area **1223 Sq Ft - 113.65 Sq M**

For Illustration Purposes Only - Not To Scale
Floor plan by www.creativeplanetlk.com