



Honeybourne Road, West Hampstead, London, NW6 .| £395

- Set in a sought after location
- Eat in Kitchen
- Managed
- Furnished or unfurnished

- Portered
- Council tax - D - £1321 per annum

"Vita Properties have been tremendously helpful throughout the process of securing/renting my flat. Informative about the property, prompt communication, easy to use dashboard for sharing of information, and pleasant to work with. Highly recommend!"

A Bright and Spacious 2 Bedroom Apartment, set on the 4th floor of a Prestigious Mansion building in the heart of West Hampstead.

The flat benefits High Ceilings - Feature Fireplaces - 14'4 x 13'9 reception/dining room - Master Bedroom 12'7 x 10'8 - 2nd Double Bedroom 10'11 x 8'1 - Fully fitted eat in Kitchen - Tiled Bathroom Suite - Conveniently Located for Easy Access to Shops and Cafes - 5 Minutes Walk to West Hampstead Thameslink, Silverlink and Underground Stations (Jubilee Line) - Available August 5 - Furnished or Unfurnished



Oliver Kent

✉ oliver.kent@vitaproperties.uk
☎ +4477 7274 0351



🏠	Flat
🔑	Available to Let
🛏️	x 2
🛋️	x 1
🪑	x 1



"I was very impressed with Vita and their network of buyers. When the sale of my flat fell through (twice) they worked extremely hard to find new buyers in a difficult market - thank you!"



"Working with Vita properties has been a smooth experience! No complaints at all. Our letting agent, Diana has been fantastic and very helpful throughout the whole process. I would highly recommend both Vita properties and Diana."



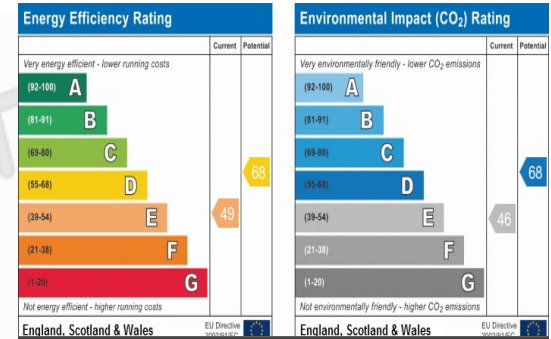
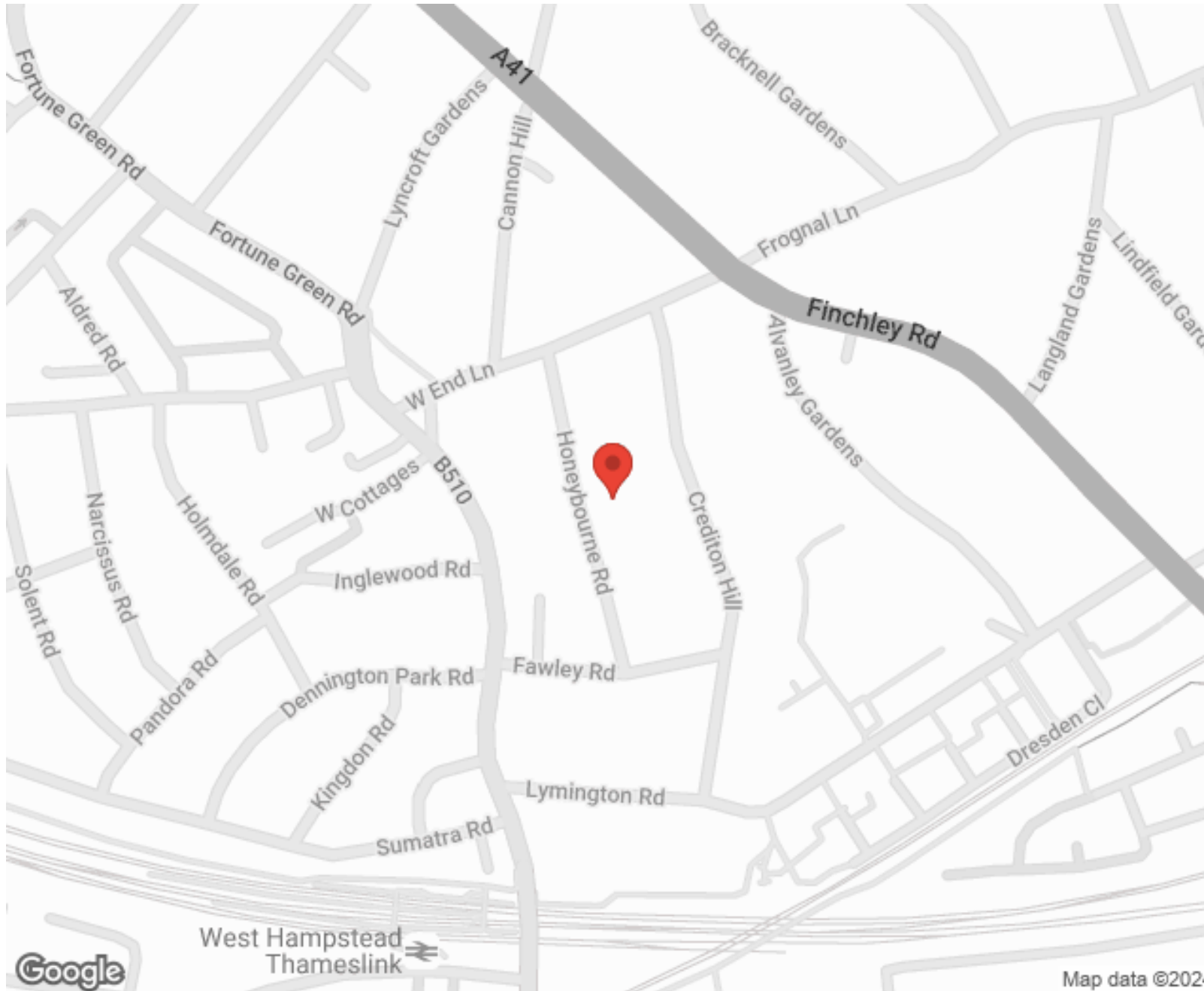
"I used Vita properties to find a flat recently and it was an overall professional, personalised and positive experience. Saira went the extra mile to accommodate to our needs and quick to help us whenever possible."



**MORE INFO, PICTURES,
CONTACT ON
OUR WEBSITE**



"Vita Properties is a very professional agency. My experience with them was incredible and the entire team was very helpful and kind throughout the renting process. I'd highly recommend!"



SCAN FOR MORE
GOOGLE REVIEWS






Google

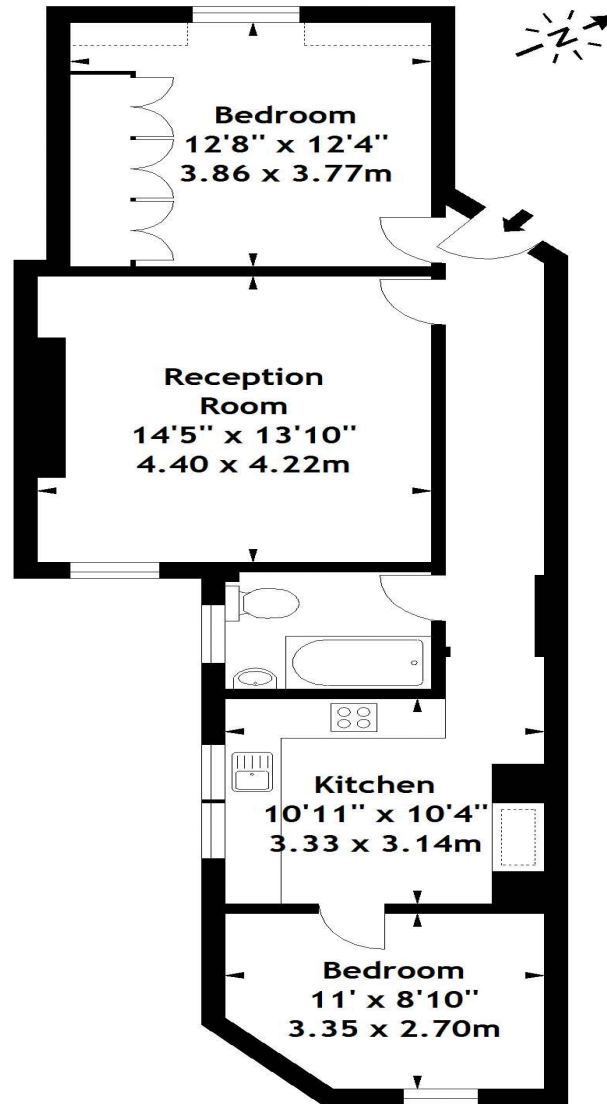


4.9 Stars | 132 Reviews

Find us on social media

-  vitaproperties
-  VitaProperties
-  VitaProperties

Yale Court, NW6
Approx. Gross Internal Area
716 Sq Ft - 66.52 Sq M



Third Floor

Measured in accordance with RICS guidelines. Every attempt is made to ensure accuracy, however all measurements are approximate. This floor plan is for illustrative purposes only and is not to scale.
© Datography Ltd 2014
Photographs * Floorplans * Virtual Tours
Tel: 0845 643 4401 www.datography.com