



## Lanark Mansions, Maida Vale, London, W9 .| £435

- Fitted wardrobes
- Modern kitchen and bathroom
- Within a 5 min walk to Warwick Avenue tube
- Available 4th October

- Council tax - C - £603 per annum

"Vita Properties have been tremendously helpful throughout the process of securing/renting my flat. Informative about the property, prompt communication, easy to use dashboard for sharing of information, and pleasant to work with. Highly recommend!"

Available on 4th October is this beautiful (approx 539 sq ft) second floor one double bedroom apartment in a mansion block in popular Maida Vale. The property has been refurbished and has a very modern feel and been finished to a high specification. Moments from shops and transport the flat is offered furnished.



Oliver Kent

✉ [oliver.kent@vitaproperties.uk](mailto:oliver.kent@vitaproperties.uk)

☎ +4477 7274 0351

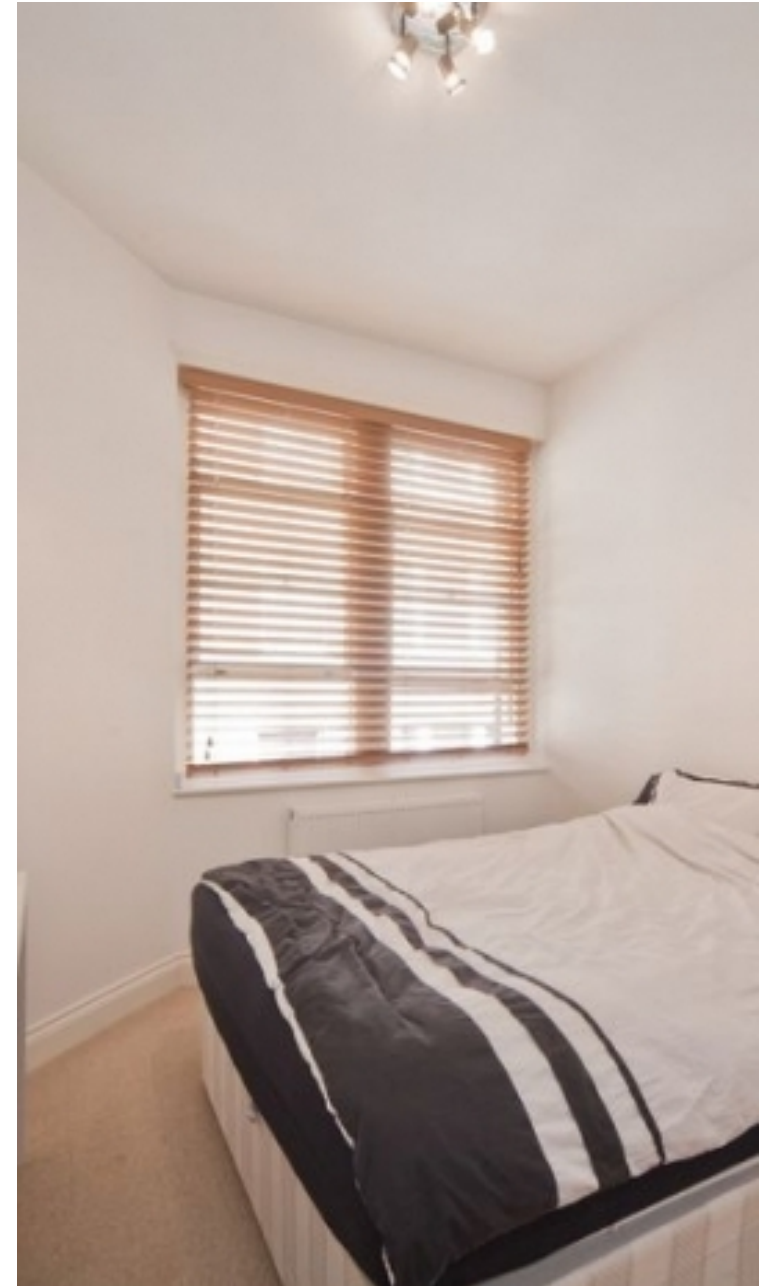


- 🏠 Flat
- 🔑 Available to Let
- 🛏 x 1
- 🛋 x 1
- 🪑 x 1



"I was very impressed with Vita and their network of buyers. When the sale of my flat fell through (twice) they worked extremely hard to find new buyers in a difficult market - thank you!"

---



"Working with Vita properties has been a smooth experience! No complaints at all. Our letting agent, Diana has been fantastic and very helpful throughout the whole process. I would highly recommend both Vita properties and Diana."

---



"I used Vita properties to find a flat recently and it was an overall professional, personalised and positive experience. Saira went the extra mile to accommodate to our needs and quick to help us whenever possible."

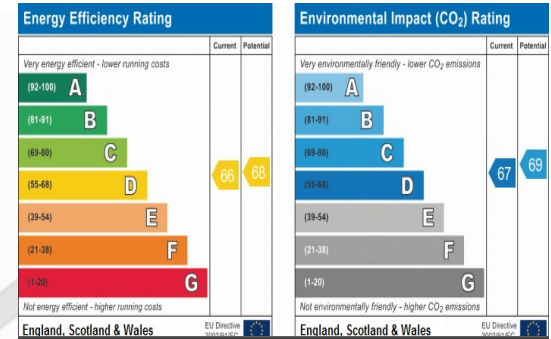
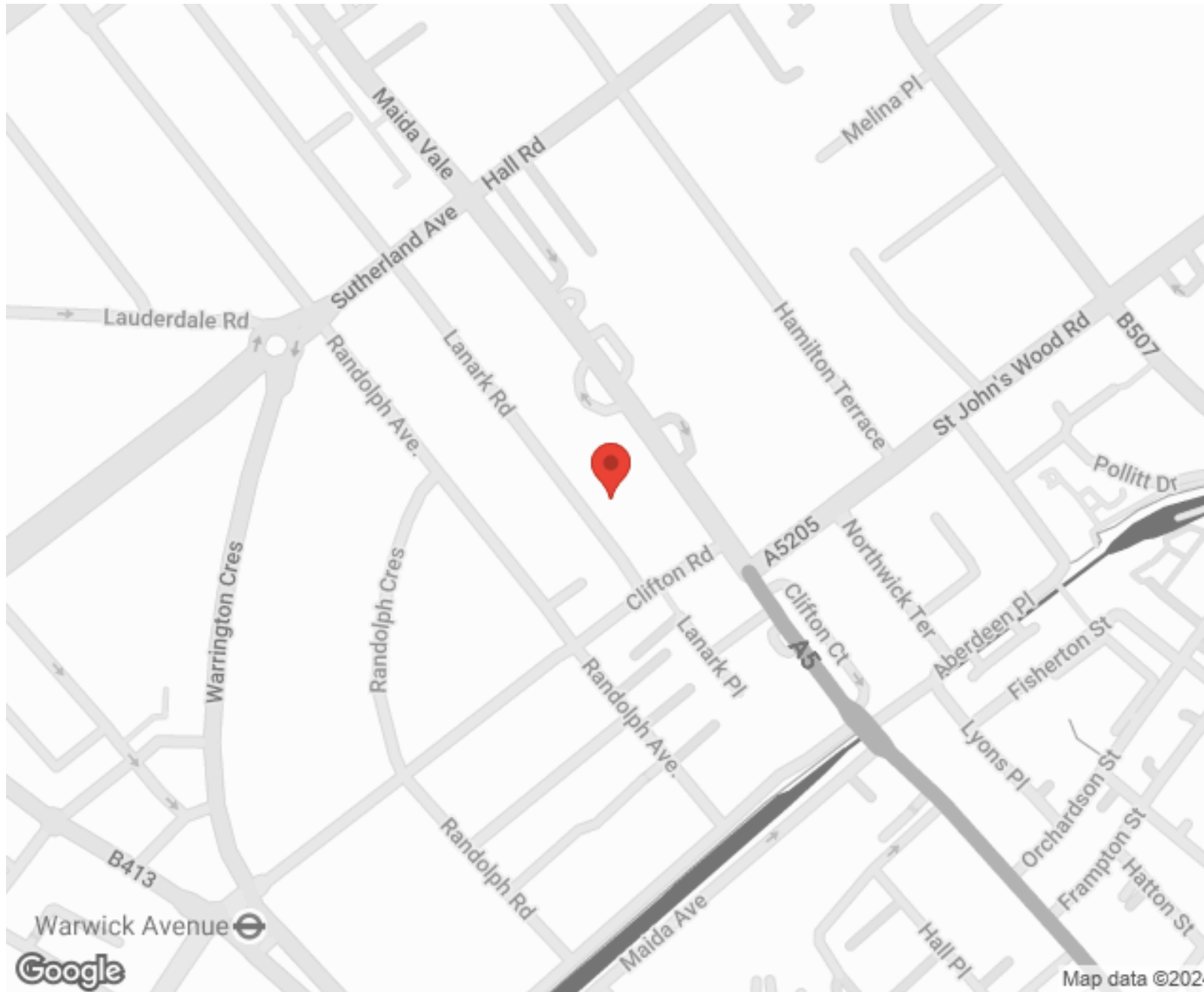
---



**MORE INFO, PICTURES,  
CONTACT ON  
OUR WEBSITE**



"Vita Properties is a very professional agency. My experience with them was incredible and the entire team was very helpful and kind throughout the renting process. I'd highly recommend!"



SCAN FOR MORE  
GOOGLE REVIEWS






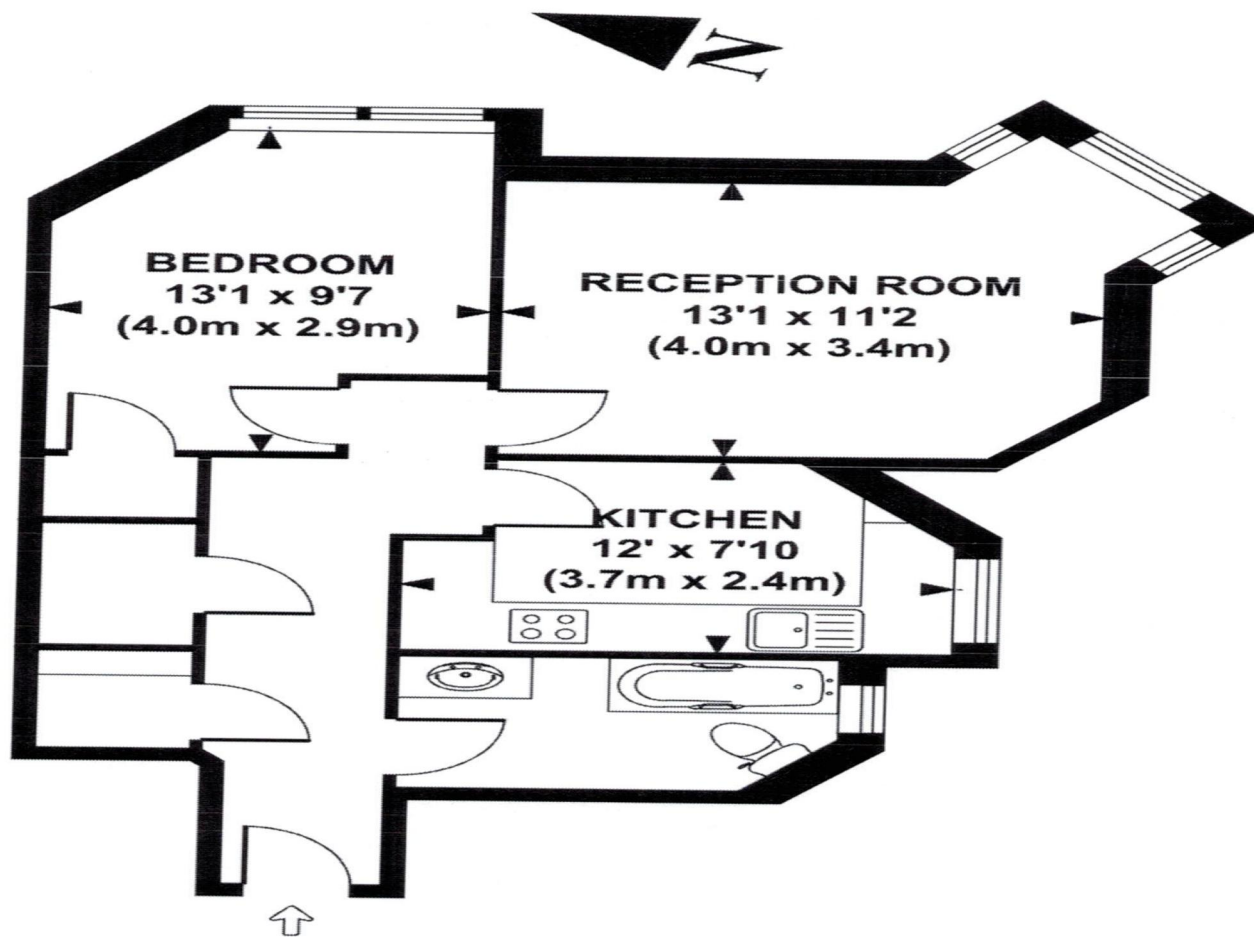
Google



4.9 Stars | 132 Reviews

Find us on social media

-  vitaproperties
-  VitaProperties
-  VitaProperties



**SECOND FLOOR  
GROSS INTERNAL  
FLOOR AREA 539 SQ FT**

**APPROX. GROSS INTERNAL FLOOR AREA 539 SQ FT / 50 SQ M**  
Ref: DP0114 Copyright Delph Properties 2007

This floorplan is for illustration purposes and may not truly reflect design or dimensions and should not be used for valuation or condition purposes