



Pulse Apartments, Lymington Road, Hampstead, London NW6 .| £795

- Modern
- Spacious
- Portered
- Parking

- Piped Surround Music
- Available immediately

"Vita Properties have been tremendously helpful throughout the process of securing/renting my flat. Informative about the property, prompt communication, easy to use dashboard for sharing of information, and pleasant to work with. Highly recommend!"

A three bedroom luxury flat in a modern development on the corner of Lymington Road and Finchley Road. This flat boasts three double bedrooms and two bathrooms and a large modern kitchen. The flat benefits from a spacious lounge surrounded by large windows, master bedroom (ensuite), further 2 bedrooms, a large reception, balcony, porter and parking, under floor heating and a concierge service as well as being a few minutes walk from transport and the O2 Centre.

This property is available immediately and offered on a furnished or an unfurnished basis



Oliver Kent

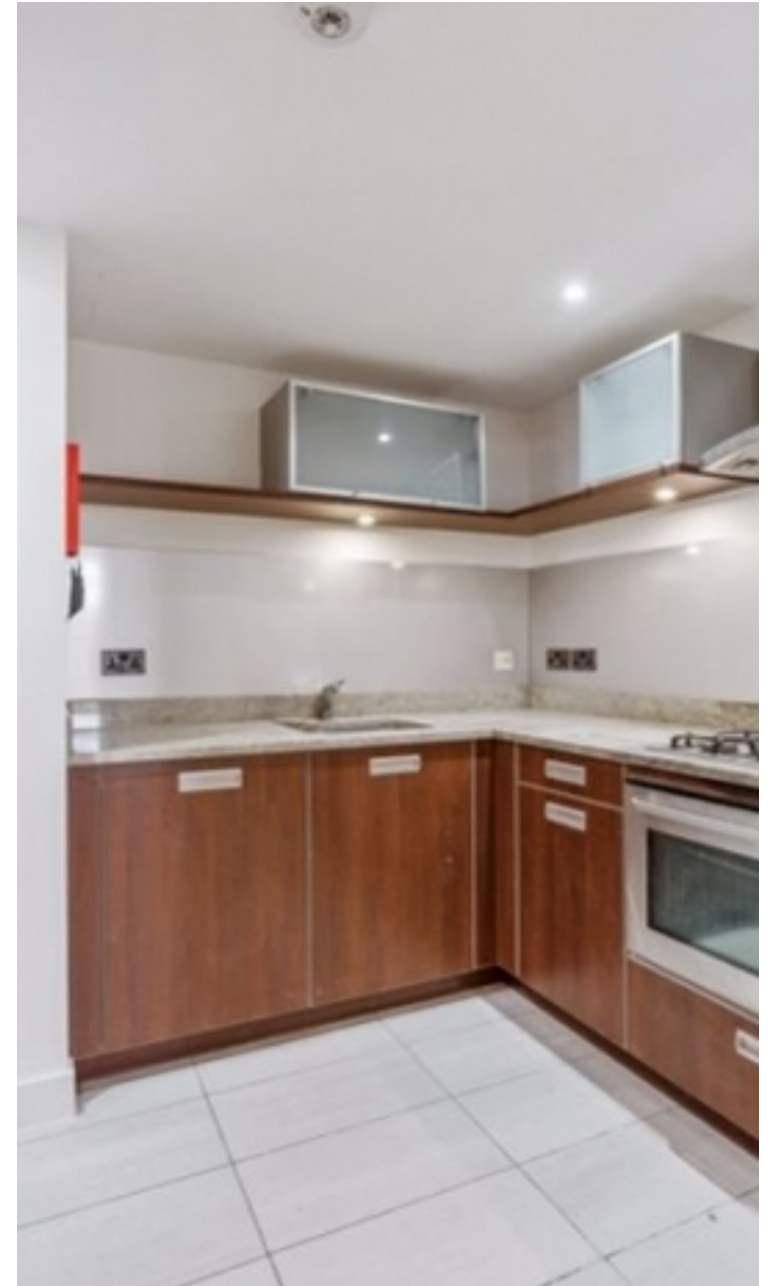
✉ oliver.kent@vitaproperties.uk
☎ +4477 7274 0351



🏠	Flat
🔑	Available to Let
🛏️	x 3
🛁	x 1
🚿	x 2



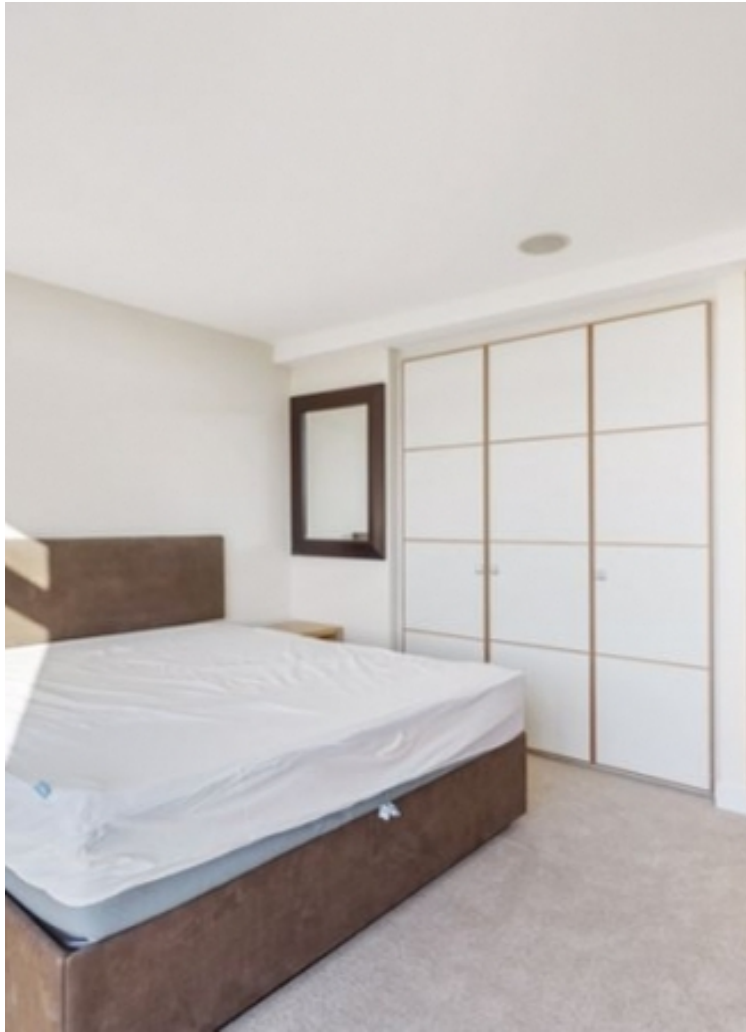
"I was very impressed with Vita and their network of buyers. When the sale of my flat fell through (twice) they worked extremely hard to find new buyers in a difficult market - thank you!"



"Working with Vita properties has been a smooth experience! No complaints at all. Our letting agent, Diana has been fantastic and very helpful throughout the whole process. I would highly recommend both Vita properties and Diana."



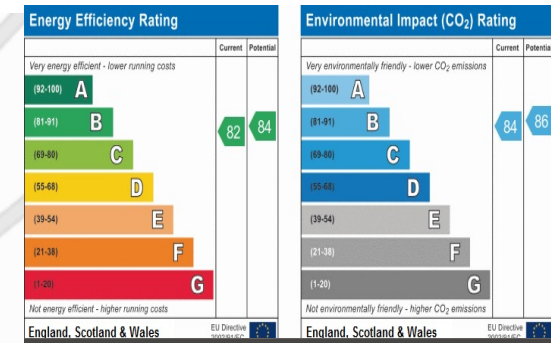
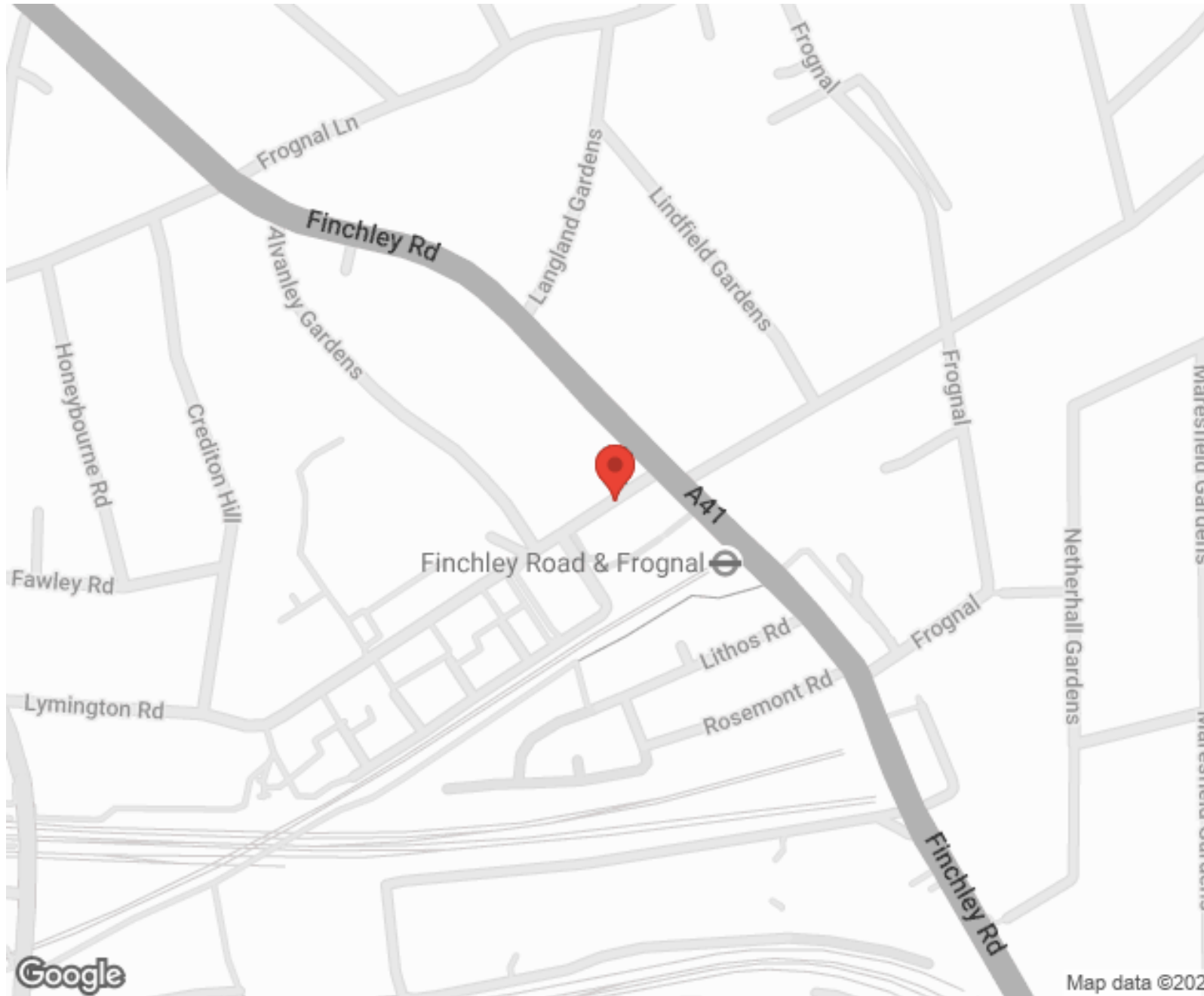
"I used Vita properties to find a flat recently and it was an overall professional, personalised and positive experience. Saira went the extra mile to accommodate to our needs and quick to help us whenever possible."



**MORE INFO, PICTURES,
CONTACT ON
OUR WEBSITE**



"Vita Properties is a very professional agency. My experience with them was incredible and the entire team was very helpful and kind throughout the renting process. I'd highly recommend!"



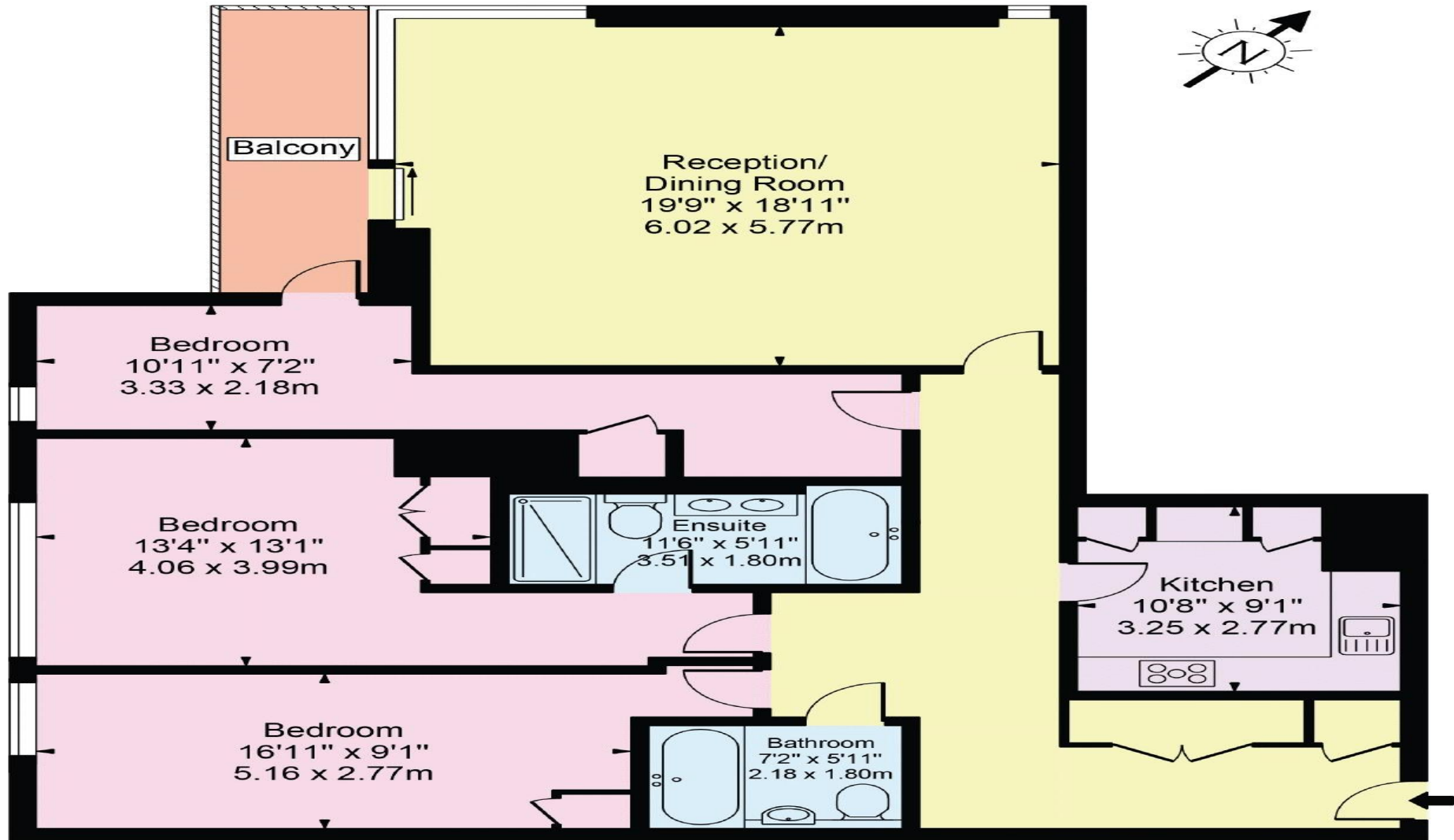
SCAN FOR MORE GOOGLE REVIEWS

Google
★★★★★
4.9 Stars | 132 Reviews

Find us on social media

- vitaproperties
- VitaProperties
- VitaProperties

Pulse Apartments, Lymington Road



Second Floor

Approx. Gross Internal Area 1380 Sq Ft - 128.21 Sq M

For Illustration Purposes Only - Not To Scale

This floor plan should be used as a general outline for guidance only and does not constitute in whole or in part an offer or contract. Any intending purchaser or lessee should satisfy themselves by inspection, searches, enquiries and full survey as to the correctness of each statement. Any areas, measurements or distances quoted are approximate and should not be used to value a property or be the basis of any sale or let.