



West End Lane, West Hampstead, London, NW6 .| £375

- Central location
- Excellent condition
- Gas central heating
- 1st Floor flat

- Fully equipped eat-in kitchen
- Intergrated dishwasher/washing machine
- Council tax - D - £1321 per annum

"Vita Properties have been tremendously helpful throughout the process of securing/renting my flat. Informative about the property, prompt communication, easy to use dashboard for sharing of information, and pleasant to work with. Highly recommend!"

Available NOW - A well proportioned one bedroom flat offering generous living space and a fabulous eat in kitchen. Situated on the 1st floor of a purpose built block. The property comprises reception room, contemporary kitchen/dining room, bedroom with fitted wardrobes, modern bathroom and a guest wc. Located on West End Lane, the property is moments from a wide selection of shops and amenities of West Hampstead (Jubilee Line) (Overland) and for the motorist, the nearby A5 & M1 provides access to routes out of London.

Available furnished



Oliver Kent

✉ oliver.kent@vitaproperties.uk
☎ +4477 7274 0351



🏠	Flat
🔑	Available to Let
🛏️	x 1
🚿	x 1
🚽	x 1



"I was very impressed with Vita and their network of buyers. When the sale of my flat fell through (twice) they worked extremely hard to find new buyers in a difficult market - thank you!"



"Working with Vita properties has been a smooth experience! No complaints at all. Our letting agent, Diana has been fantastic and very helpful throughout the whole process. I would highly recommend both Vita properties and Diana."



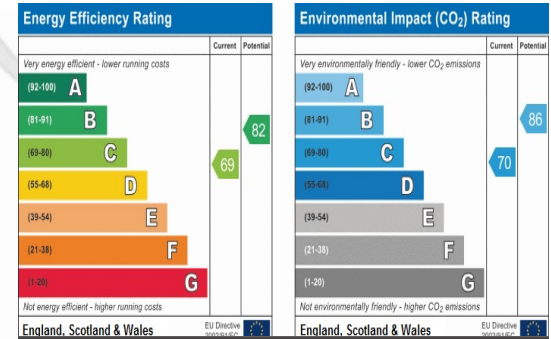
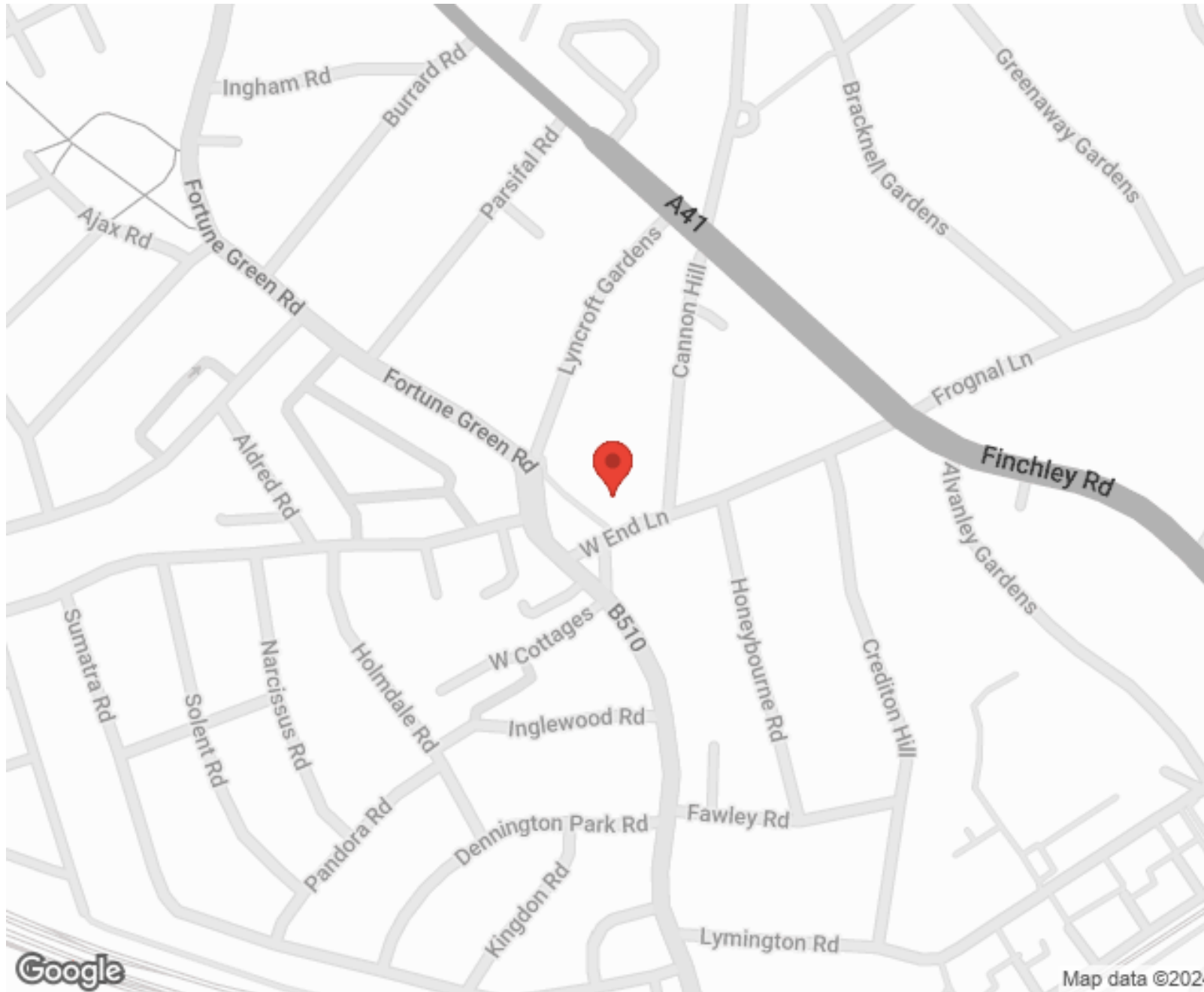
"I used Vita properties to find a flat recently and it was an overall professional, personalised and positive experience. Saira went the extra mile to accommodate to our needs and quick to help us whenever possible."



MORE INFO, PICTURES,
CONTACT ON
OUR WEBSITE



"Vita Properties is a very professional agency. My experience with them was incredible and the entire team was very helpful and kind throughout the renting process. I'd highly recommend!"



SCAN FOR MORE
GOOGLE REVIEWS



Google

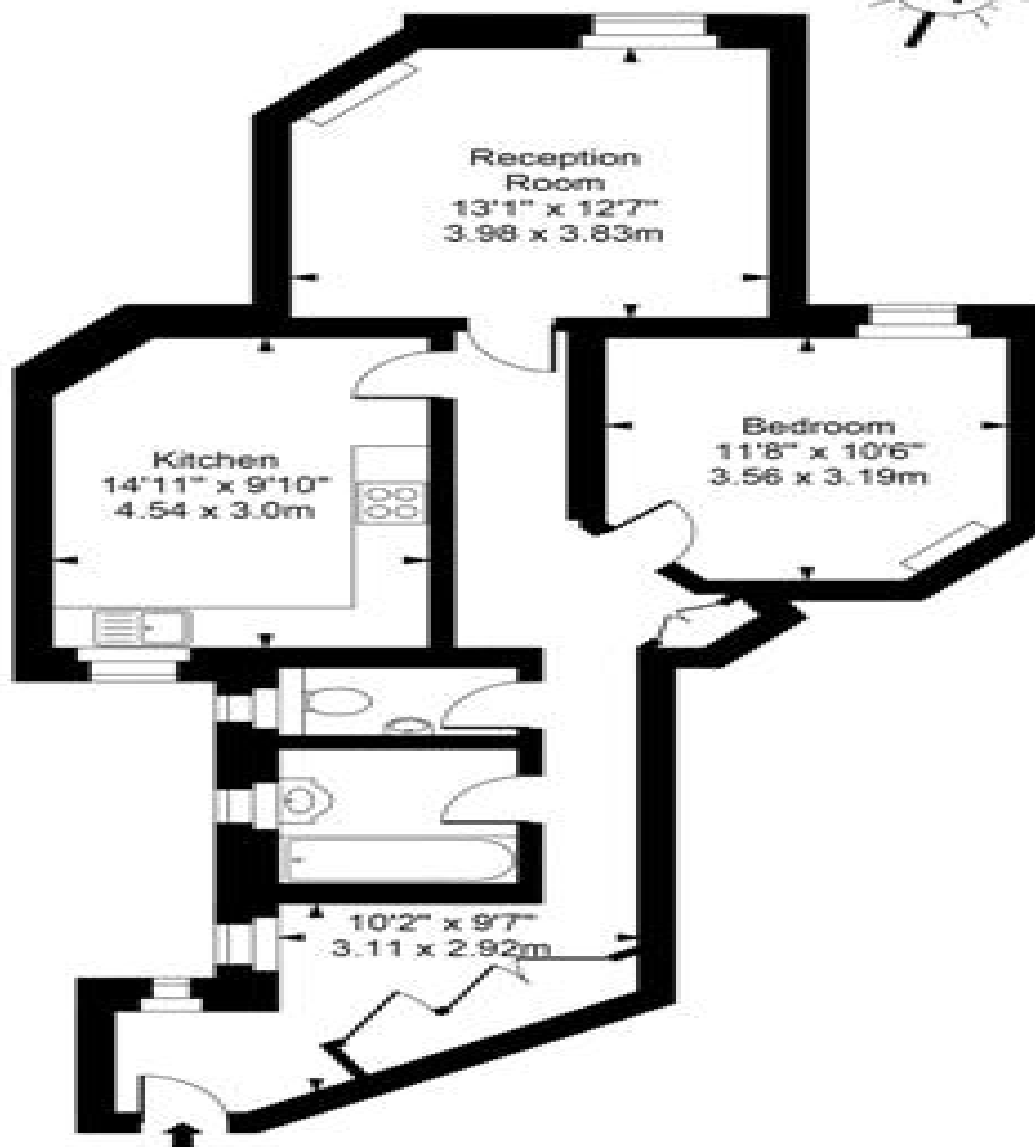


4.9 Stars | 132 Reviews

Find us on social media

- vitaproperties
- VitaProperties
- VitaProperties

Alexandra Mansions



First Floor

Approx Gross Internal Area 719 Sq Ft - 66.83 Sq M

For Illustration Purposes Only - Not To Scale
Floor plan by www.creativeplanettk.com