



Berridge Mews, Hillfield Road, West Hampstead, London, NW6 .| £885

- Kitchen With Dining & Lounge Area
- Managed
- Within walking distance to Mill Lane and West End Lane
- Council tax - G - £2201 per annum

- Available on the 17 August

"Vita Properties have been tremendously helpful throughout the process of securing/renting my flat. Informative about the property, prompt communication, easy to use dashboard for sharing of information, and pleasant to work with. Highly recommend!"

Available 17 August - A beautiful 4 bedroom terraced town house situated in this exclusive gated development within a prime West Hampstead location, offering well proportioned living space over 3 floors. The property comprises: Reception room, large fully fitted eat-in kitchen with french doors leading from a conservatory on to a tiled garden, master bedroom with fitted wardrobes and en suite bathroom, 2 further double bedrooms with fitted wardrobes (1 with en suite shower room), single bedroom, family bathroom, guest WC, private patio garden, garage and off street parking. Berridge Mews is located within walking distance to the cafes, restaurants and underground station of West Hampstead.

Offered unfurnished



Oliver Kent

✉ [oliver.kent@vitaproperties.uk](mailto:oliver.kent@vitaproperties.uk)  
☎ +4477 7274 0351



|    |                  |
|----|------------------|
| 🏠  | House            |
| 🔑  | Available to Let |
| 🛏️ | x 4              |
| 🛋️ | x 2              |
| 🚪  | x 3              |



"I was very impressed with Vita and their network of buyers. When the sale of my flat fell through (twice) they worked extremely hard to find new buyers in a difficult market - thank you!"

---



"Working with Vita properties has been a smooth experience! No complaints at all. Our letting agent, Diana has been fantastic and very helpful throughout the whole process. I would highly recommend both Vita properties and Diana."

---



"I used Vita properties to find a flat recently and it was an overall professional, personalised and positive experience. Saira went the extra mile to accommodate to our needs and quick to help us whenever possible."

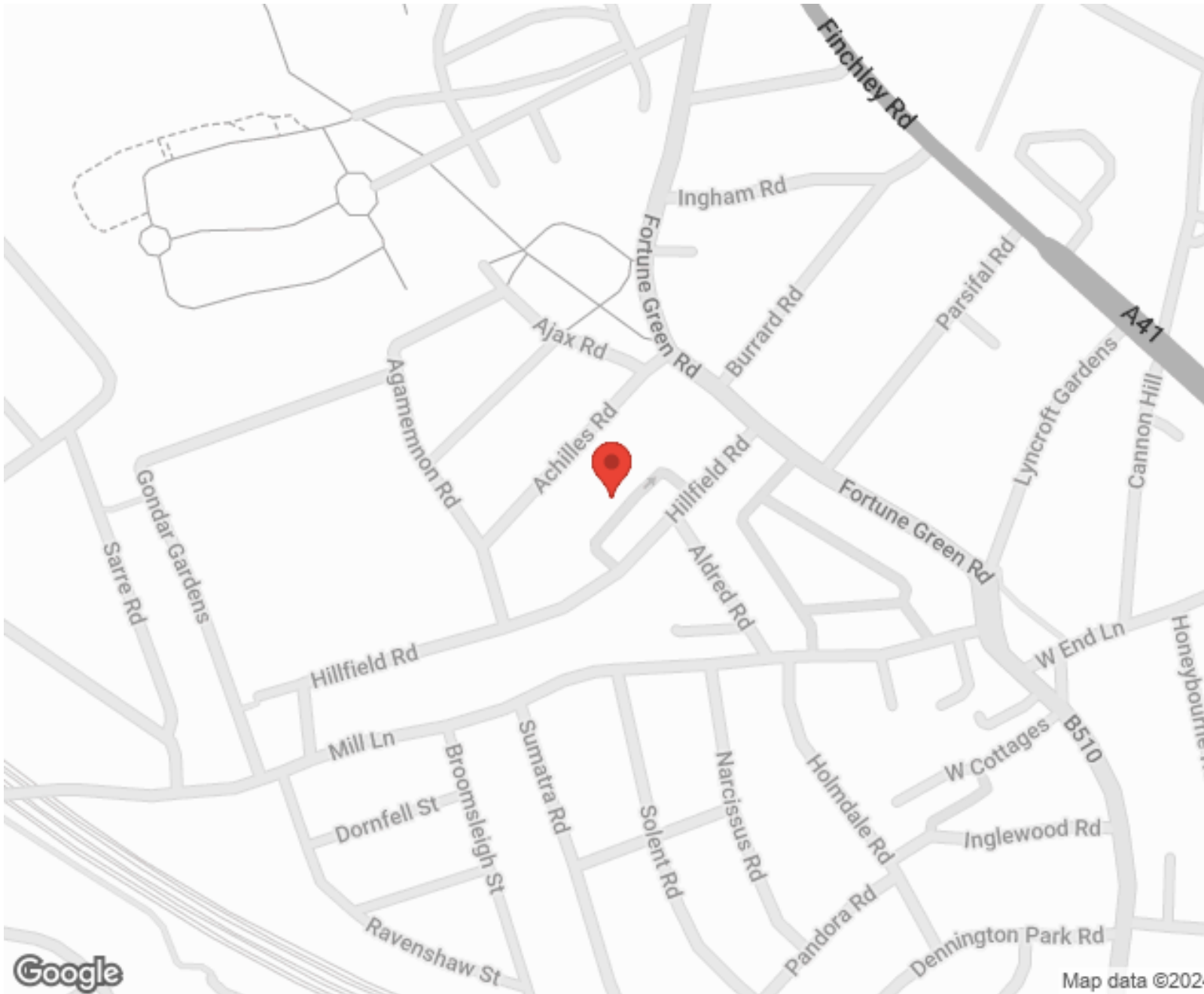
---



**MORE INFO, PICTURES,  
CONTACT ON  
OUR WEBSITE**



"Vita Properties is a very professional agency. My experience with them was incredible and the entire team was very helpful and kind throughout the renting process. I'd highly recommend!"



| Energy Efficiency Rating                    |         | Environmental Impact (CO <sub>2</sub> ) Rating |   |         |           |
|---|---------|--|---|---------|-----------|
| Very energy efficient - lower running costs | Current | Potential                                      | Very environmentally friendly - lower CO <sub>2</sub> emissions | Current | Potential |
| (92-100) <b>A</b>                           |         |  | (92-100) <b>A</b>   |         |           |
| (81-91) <b>B</b>                            |         |  | (81-91) <b>B</b>  |         | 85        |
| (69-80) <b>C</b>                            |         |  | (69-80) <b>C</b>  |         | 75        |
| (55-68) <b>D</b>                            |         |  | (55-68) <b>D</b>  |         |           |
| (39-54) <b>E</b>                            |         |  | (39-54) <b>E</b>  |         |           |
| (21-38) <b>F</b>                            |         |  | (21-38) <b>F</b>  |         |           |
| (1-20) <b>G</b>                             |         |  | (1-20) <b>G</b>   |         |           |
| Not energy efficient - higher running costs |         |  | Not environmentally friendly - higher CO <sub>2</sub> emissions |         |           |
| England, Scotland & Wales                   |         |  | England, Scotland & Wales                                       |         |           |

SCAN FOR MORE  
GOOGLE REVIEWS






Google

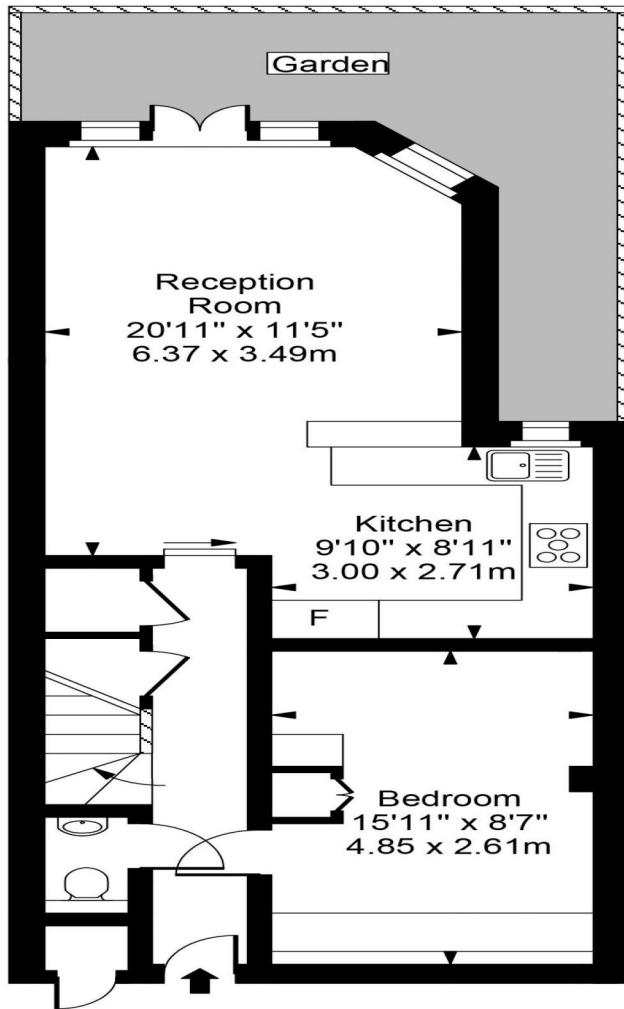


4.9 Stars | 132 Reviews

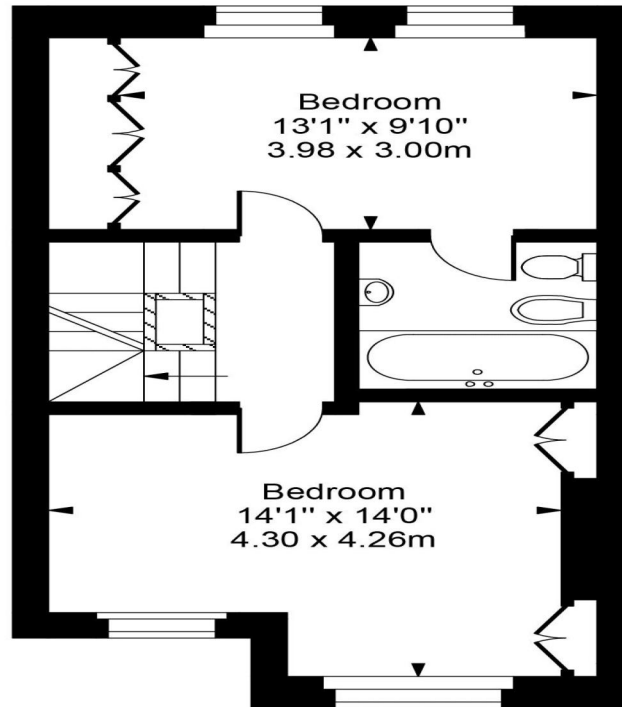
Find us on social media

-  vitaproperties
-  VitaProperties
-  VitaProperties

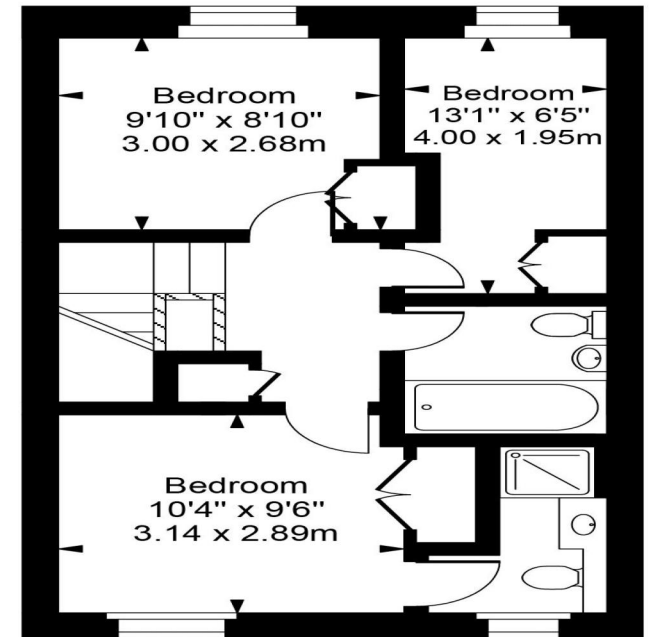
# Berridge Mews



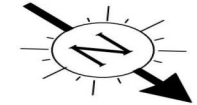
Ground Floor



First Floor



Top Floor



Approx Gross Internal Area **1485 Sq Ft - 137.99 Sq M**

For Illustration Purposes Only - Not To Scale  
Floor plan by [www.creativeplanetlk.com](http://www.creativeplanetlk.com)