



Princess Mews, Belsize Village, London, NW3 .| £1,500

- Brand Newly Refurbished
- Garage
- Guest WC
- Modern & Stylish

- Superb Location
- Available 20 August 2018
- Council tax - G - £2201 per annum


"Vita Properties have been tremendously helpful throughout the process of securing/renting my flat. Informative about the property, prompt communication, easy to use dashboard for sharing of information, and pleasant to work with. Highly recommend!"

Available 20 August 2018 is this newly refurbished and exceptionally stylish three bedroom mews house, offering bright and spacious accommodation arranged over three floors and includes a garage. The property comprises a gorgeous reception room, a guest wc, modern kitchen with integrated appliances, sizeable master bedroom with fitted wardrobes and en suite bathroom and superb second & third bedrooms with fitted wardrobes and en suite bathrooms. The property is situated in one of the most vibrant and desirable areas in London, Belsize Park is a fantastic location offering a wealth of local amenities and easy access to Hampstead. Local transport links include Belsize Park Underground Station (Northern Line). Offered Unfurnished. Early viewings advised. Please call Vita Properties on 020 7759 2199.

	House
	Available to Let
	x 3
	x 1
	x 3



Oliver Kent

 oliver.kent@vitaproperties.uk
 +4477 7274 0351



"I was very impressed with Vita and their network of buyers. When the sale of my flat fell through (twice) they worked extremely hard to find new buyers in a difficult market - thank you!"



"Working with Vita properties has been a smooth experience! No complaints at all. Our letting agent, Diana has been fantastic and very helpful throughout the whole process. I would highly recommend both Vita properties and Diana."



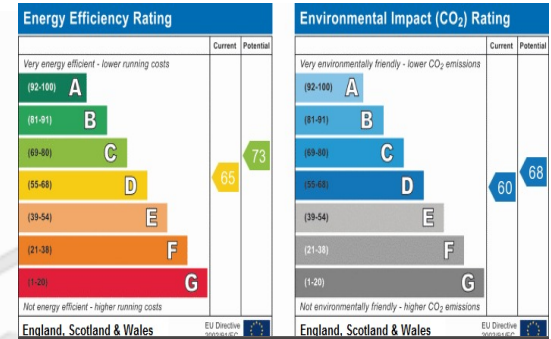
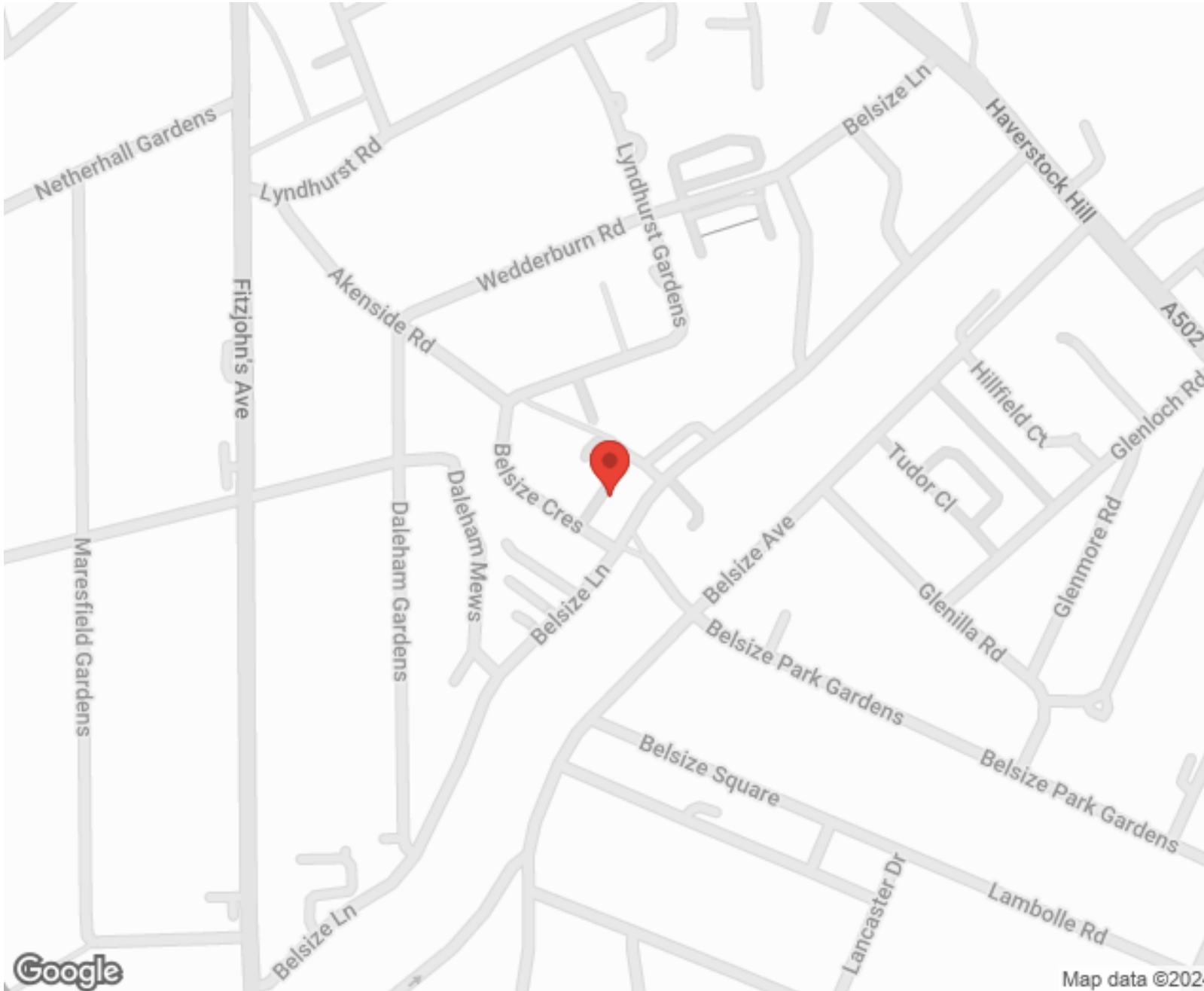
"I used Vita properties to find a flat recently and it was an overall professional, personalised and positive experience. Saira went the extra mile to accommodate to our needs and quick to help us whenever possible."




**MORE INFO, PICTURES,
CONTACT ON
OUR WEBSITE**



"Vita Properties is a very professional agency. My experience with them was incredible and the entire team was very helpful and kind throughout the renting process. I'd highly recommend!"






SCAN FOR MORE GOOGLE REVIEWS



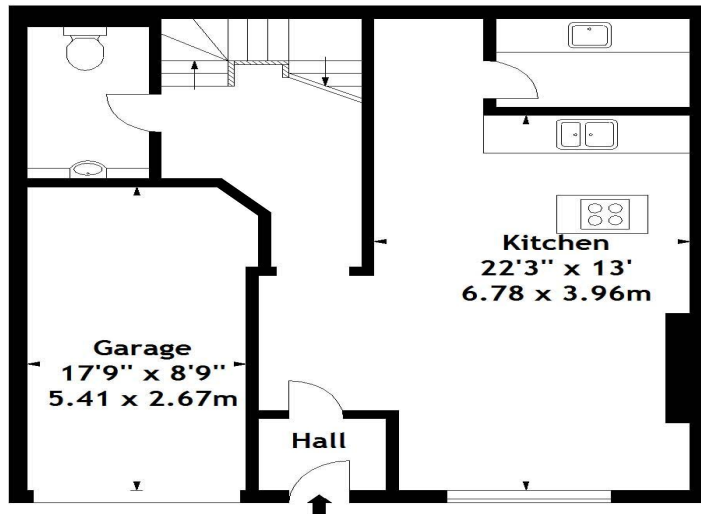
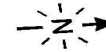
Google
★★★★★
4.9 Stars | 132 Reviews

Find us on social media

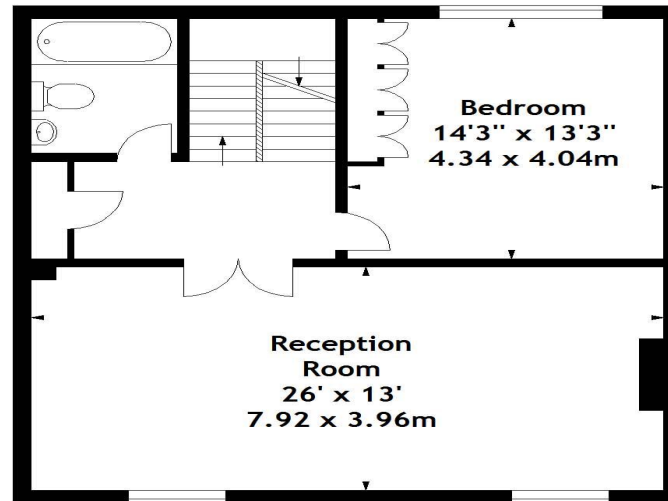
-  vitaproperties
-  VitaProperties
-  VitaProperties

Princes Mews, NW3

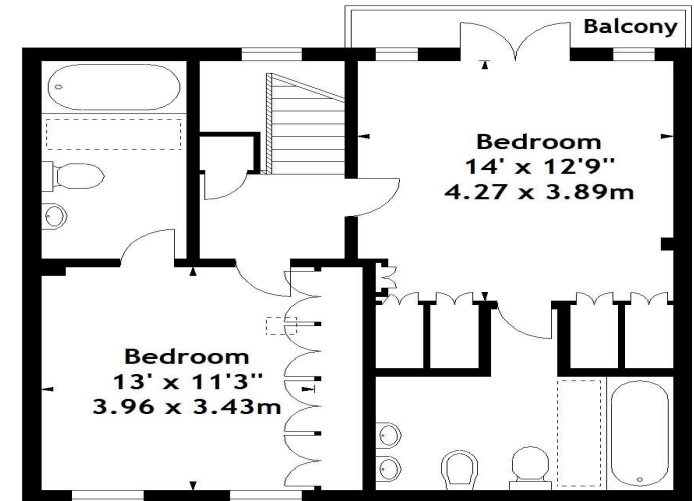
Approx. Gross Internal Area
2151 Sq Ft - 199.83 Sq M
(Including Garage)



Ground Floor



First Floor



Second Floor

Measured in accordance with RICS guidelines. Every attempt is made to ensure accuracy, however all measurements are approximate. This floor plan is for illustrative purposes only and is not to scale.

© Datography Ltd 2014

Photographs * Floorplans * Virtual Tours
Tel: 0845 643 4401 www.datography.com