



Greencroft Gardens, South Hampstead, London, NW6 .| £430

- Large reception
- Large masterbedroom
- High ceilings
- 2nd bedroom/study

- Two bathrooms
- Available 8th August
- Council tax - D - £1321 per annum

"Vita Properties have been tremendously helpful throughout the process of securing/renting my flat. Informative about the property, prompt communication, easy to use dashboard for sharing of information, and pleasant to work with. Highly recommend!"

Available 8th August - Is this well presented two bedroom apartment on the raised ground floor of a conversion. The property offers a spacious reception room with high ceilings and a bay window, two bathrooms (one en-suite) and a fully fitted kitchen. The flat can be found on a quiet tree lined avenue close to the shopping and transport facilities of West Hampstead and the Finchley Road.

Offered furnished or unfurnished



Oliver Kent

✉ oliver.kent@vitaproperties.uk

☎ +4477 7274 0351



🏠	Flat
🔑	Available to Let
🛏	x 2
🛋	x 1
🚿	x 2



"I was very impressed with Vita and their network of buyers. When the sale of my flat fell through (twice) they worked extremely hard to find new buyers in a difficult market - thank you!"



"Working with Vita properties has been a smooth experience! No complaints at all. Our letting agent, Diana has been fantastic and very helpful throughout the whole process. I would highly recommend both Vita properties and Diana."



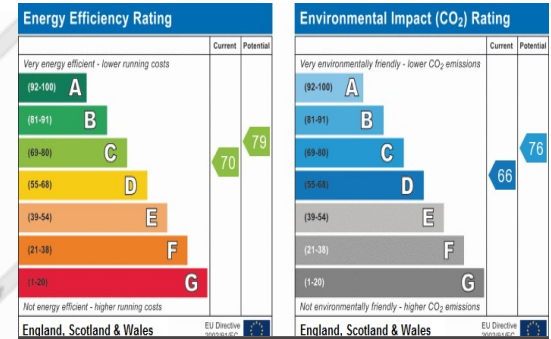
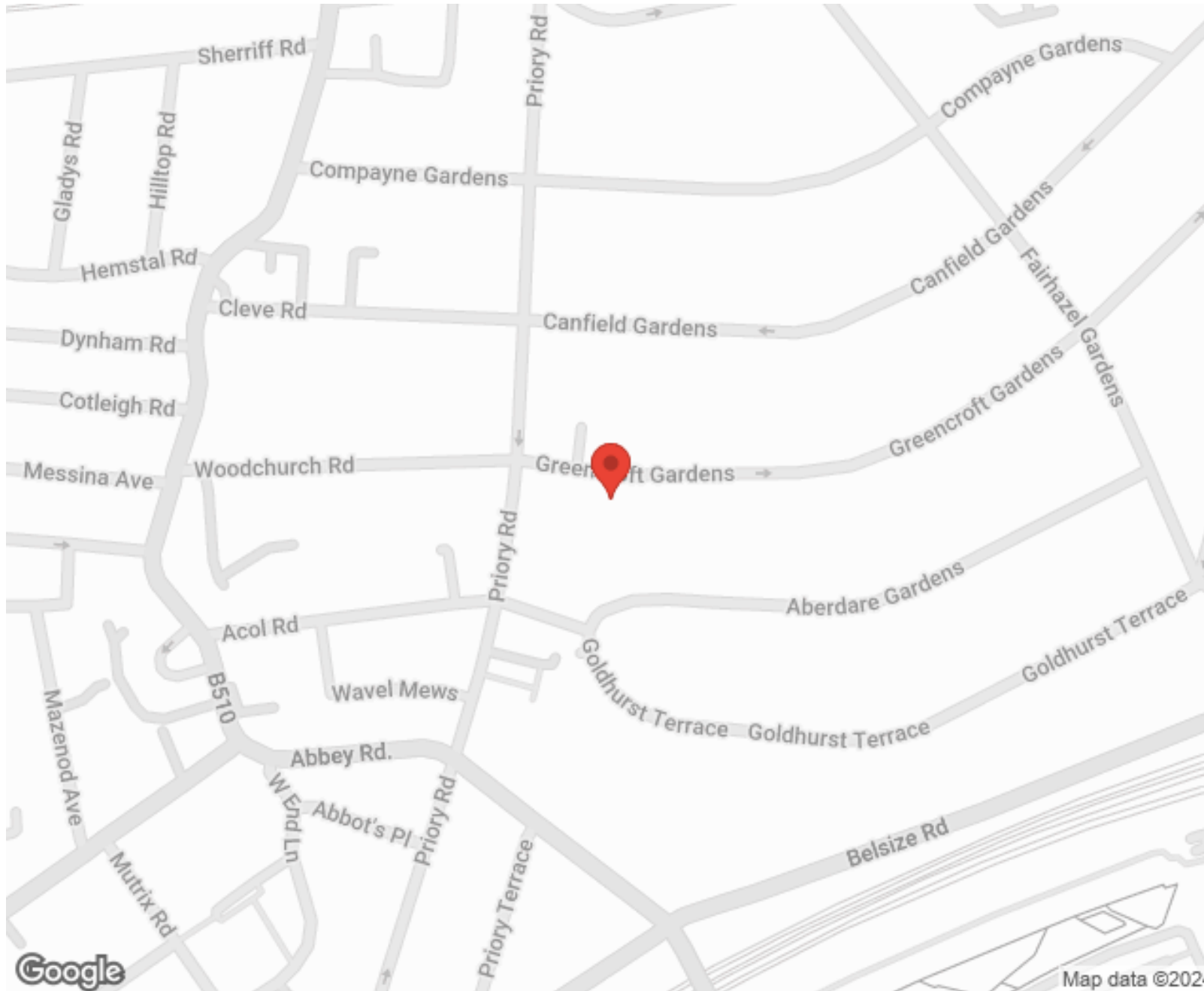
"I used Vita properties to find a flat recently and it was an overall professional, personalised and positive experience. Saira went the extra mile to accommodate to our needs and quick to help us whenever possible."



**MORE INFO, PICTURES,
CONTACT ON
OUR WEBSITE**



"Vita Properties is a very professional agency. My experience with them was incredible and the entire team was very helpful and kind throughout the renting process. I'd highly recommend!"



SCAN FOR MORE
GOOGLE REVIEWS



Google

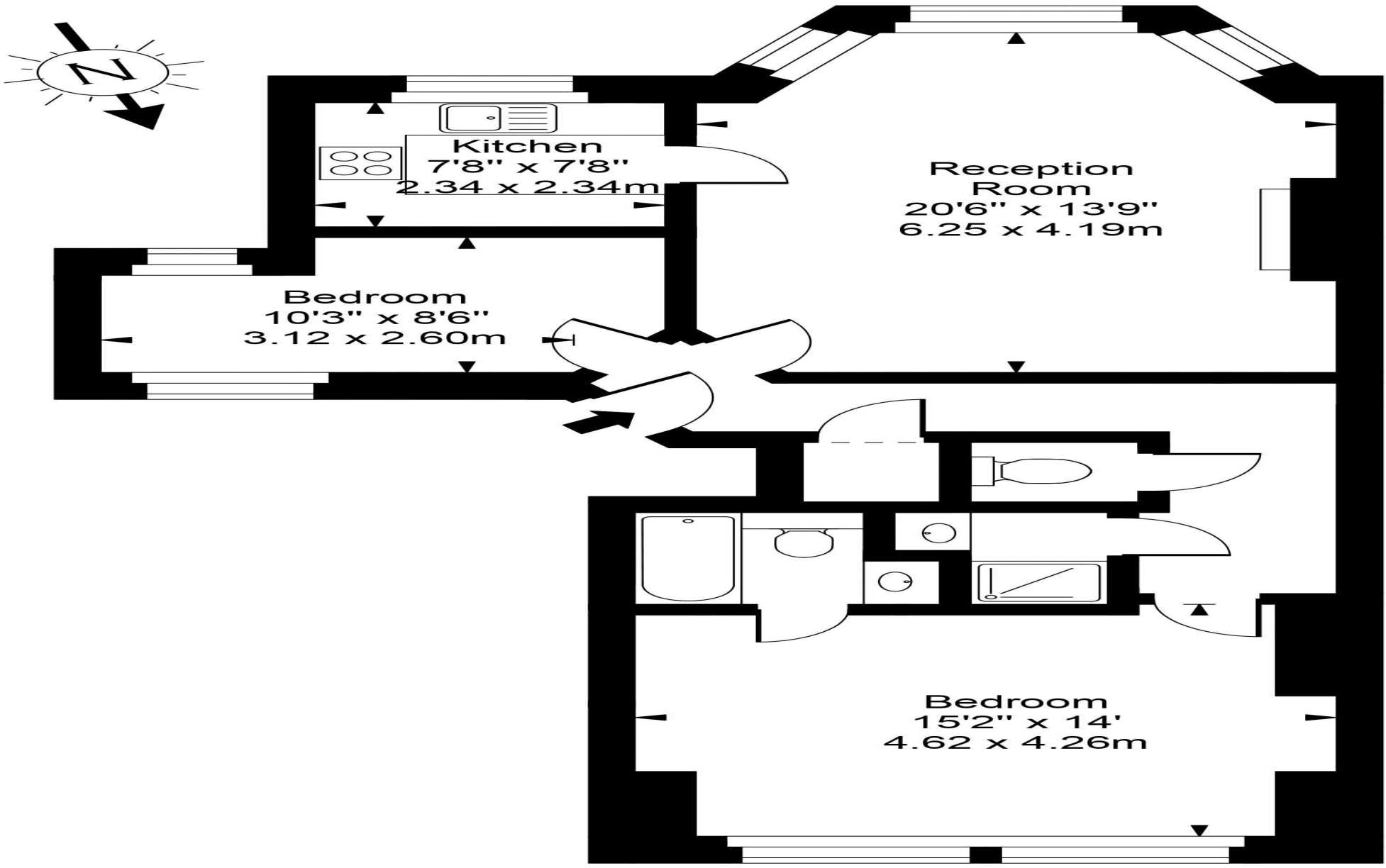


4.9 Stars | 132 Reviews

Find us on social media

- vitaproperties
- VitaProperties
- VitaProperties

Greencroft Gardens



Ground Floor

Approx Gross Internal Area **830 Sq Ft - 77.15 Sq M**



For Illustration Purposes Only - Not To Scale
Floor plan by www.creativeplanetlk.com