



Weymouth Mews, Marylebone, London W1. | £895

- Private Patio
- Modern Condition
- Moments to Marylebone Village
- 4 Double bedrooms

- Available 14 May 2015

"Vita Properties have been tremendously helpful throughout the process of securing/renting my flat. Informative about the property, prompt communication, easy to use dashboard for sharing of information, and pleasant to work with. Highly recommend!"

Newly refurbished apartment to rent in a quiet mews street located just off Portland Place in a fantastic Central London location. The flat comprises of four bedrooms, bathroom, open plan kitchen and reception room area. The property also boasts a patio garden perfect for entertaining guests. The apartment is neutrally decorated to a high standard with wooden flooring. The flat is located closely to Marlyebone village amenities and excellent London transport links. This modern London apartment is available furnished and early viewings are highly recommended.

Available 14 May 2015



Oliver Kent

✉ oliver.kent@vitaproperties.uk
☎ +4477 7274 0351



🏠	Flat
🔑	Available to Let
🛏️	x 4
🛋️	x 1
🚿	x 1

"I was very impressed with Vita and their network of buyers. When the sale of my flat fell through (twice) they worked extremely hard to find new buyers in a difficult market - thank you!"



"Working with Vita properties has been a smooth experience! No complaints at all. Our letting agent, Diana has been fantastic and very helpful throughout the whole process. I would highly recommend both Vita properties and Diana."



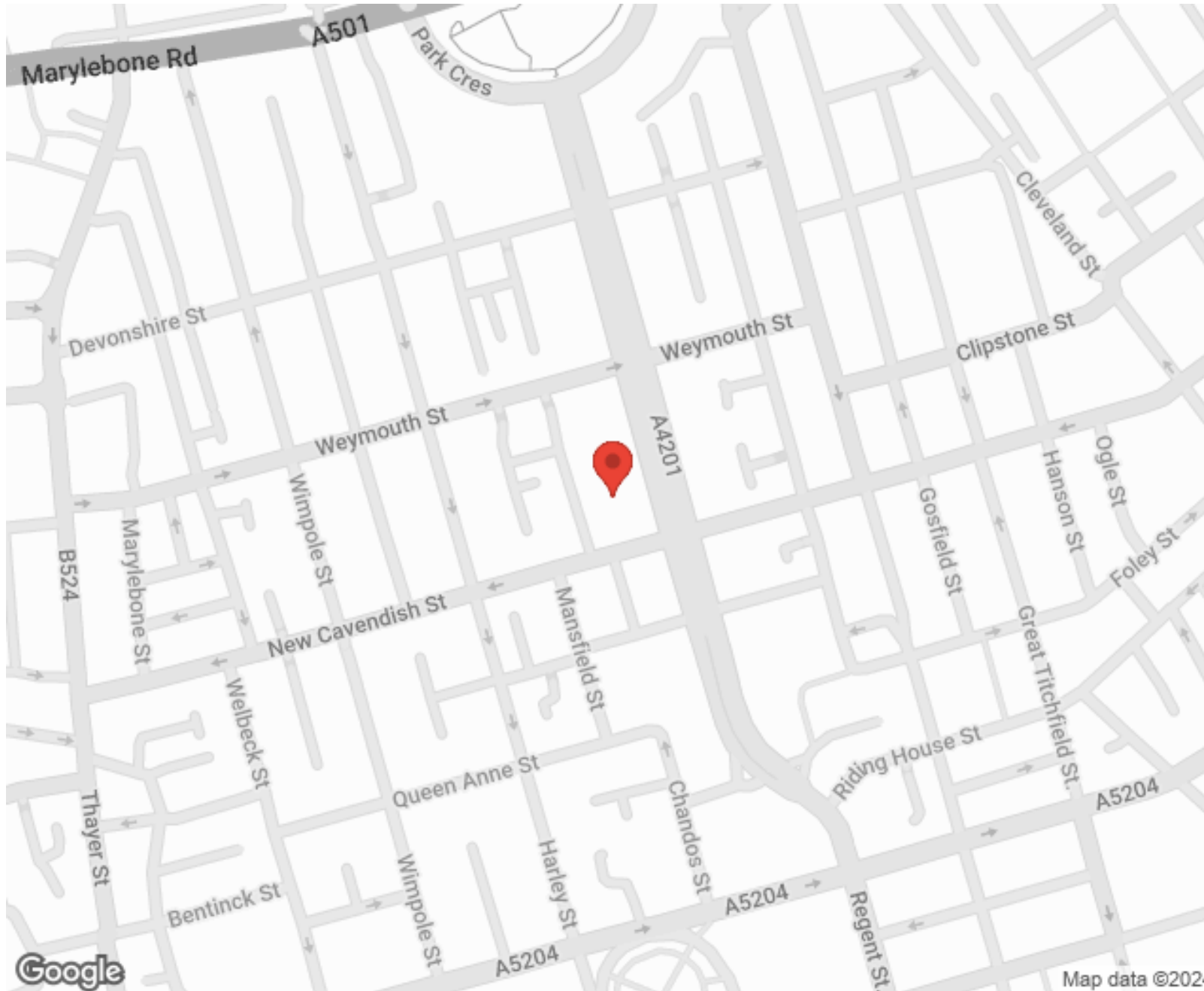
"I used Vita properties to find a flat recently and it was an overall professional, personalised and positive experience. Saira went the extra mile to accommodate to our needs and quick to help us whenever possible."



**MORE INFO, PICTURES,
CONTACT ON
OUR WEBSITE**



"Vita Properties is a very professional agency. My experience with them was incredible and the entire team was very helpful and kind throughout the renting process. I'd highly recommend!"



SCAN FOR MORE
GOOGLE REVIEWS




Google




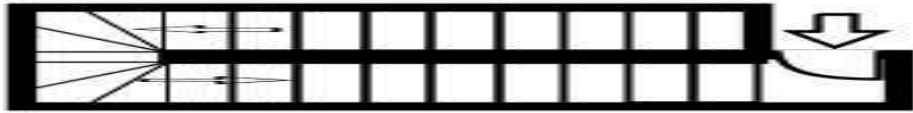
4.9 Stars | 132 Reviews

Find us on social media

 vitaproperties

 VitaProperties

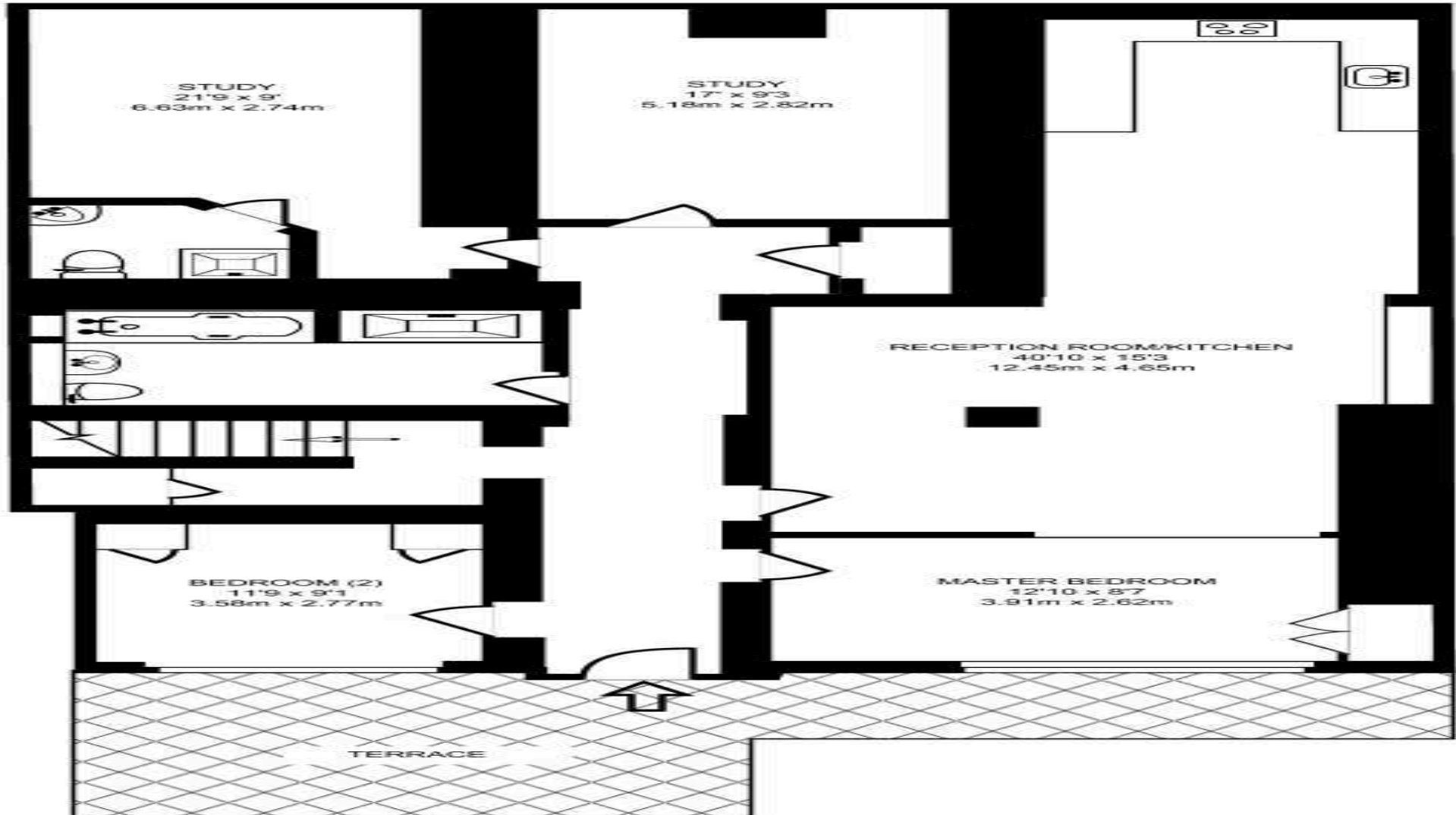
 VitaProperties



GROUND FLOOR

GROSS INTERNAL FLOOR AREA

82 SQ FT/7.63 SQ M



LOWER GROUND FLOOR GROSS INTERNAL FLOOR AREA

1,657 SQ FT/154.05 SQ M