



Belsize Square, Belsize Park, London, NW3 .| £1,250

- Decked Balcony
- Separate WC
- Large reception room and separate dining room
- Eat-in kitchen

- Managed
- Available now

"Vita Properties have been tremendously helpful throughout the process of securing/renting my flat. Informative about the property, prompt communication, easy to use dashboard for sharing of information, and pleasant to work with. Highly recommend!"

Available now is this fantastic four double bedroom flat which has undergone a complete renovation is on the first and second floor of this charming red-brick Victorian house in the heart of Belsize Park. The apartment comprises four double bedrooms with built-in storage, single bedroom/study, three bathrooms, separate WC, eat-in kitchen, large reception room and separate dining room. Located on this quiet residential street just a few minutes from the tube. Offered unfurnished or furnished.



Oliver Kent

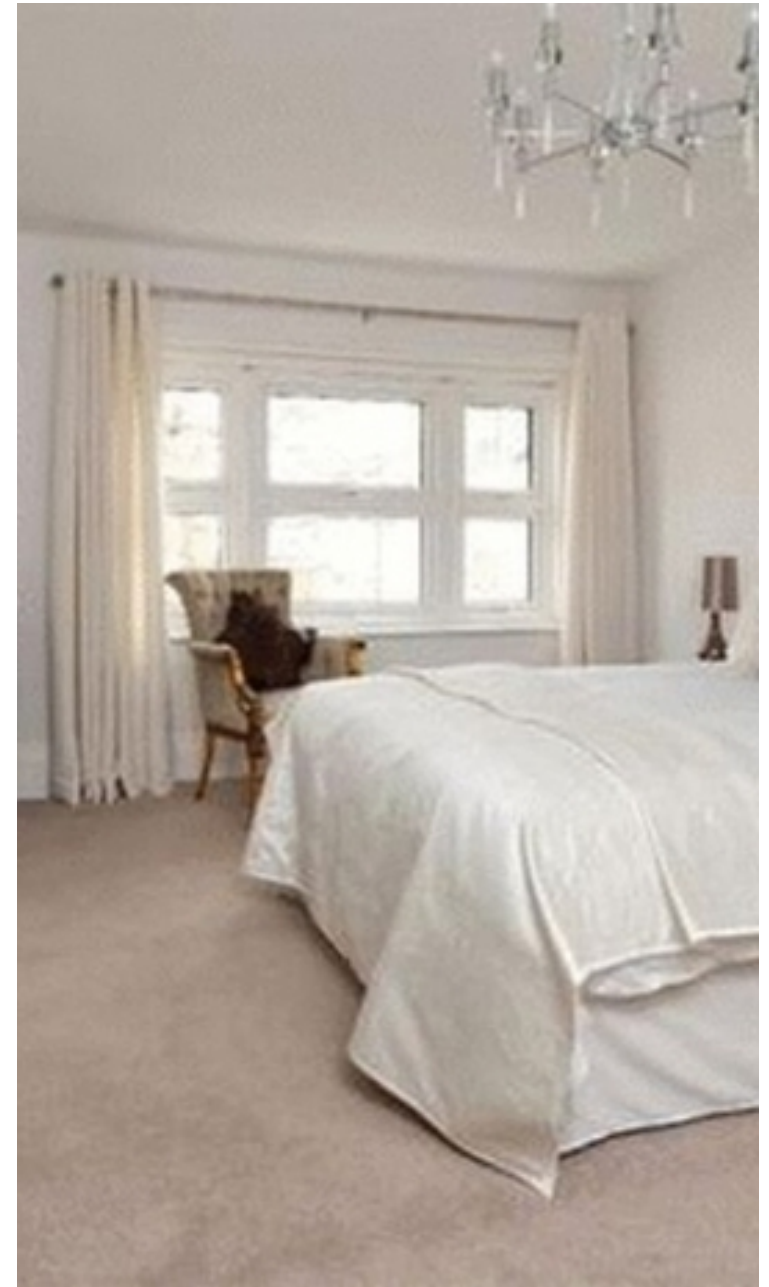
✉ oliver.kent@vitaproperties.uk
☎ +4477 7274 0351



🏠	Flat
🔑	Available to Let
🛏️	x 4
🛋️	x 2
🚿	x 3



"I was very impressed with Vita and their network of buyers. When the sale of my flat fell through (twice) they worked extremely hard to find new buyers in a difficult market - thank you!"



"Working with Vita properties has been a smooth experience! No complaints at all. Our letting agent, Diana has been fantastic and very helpful throughout the whole process. I would highly recommend both Vita properties and Diana."



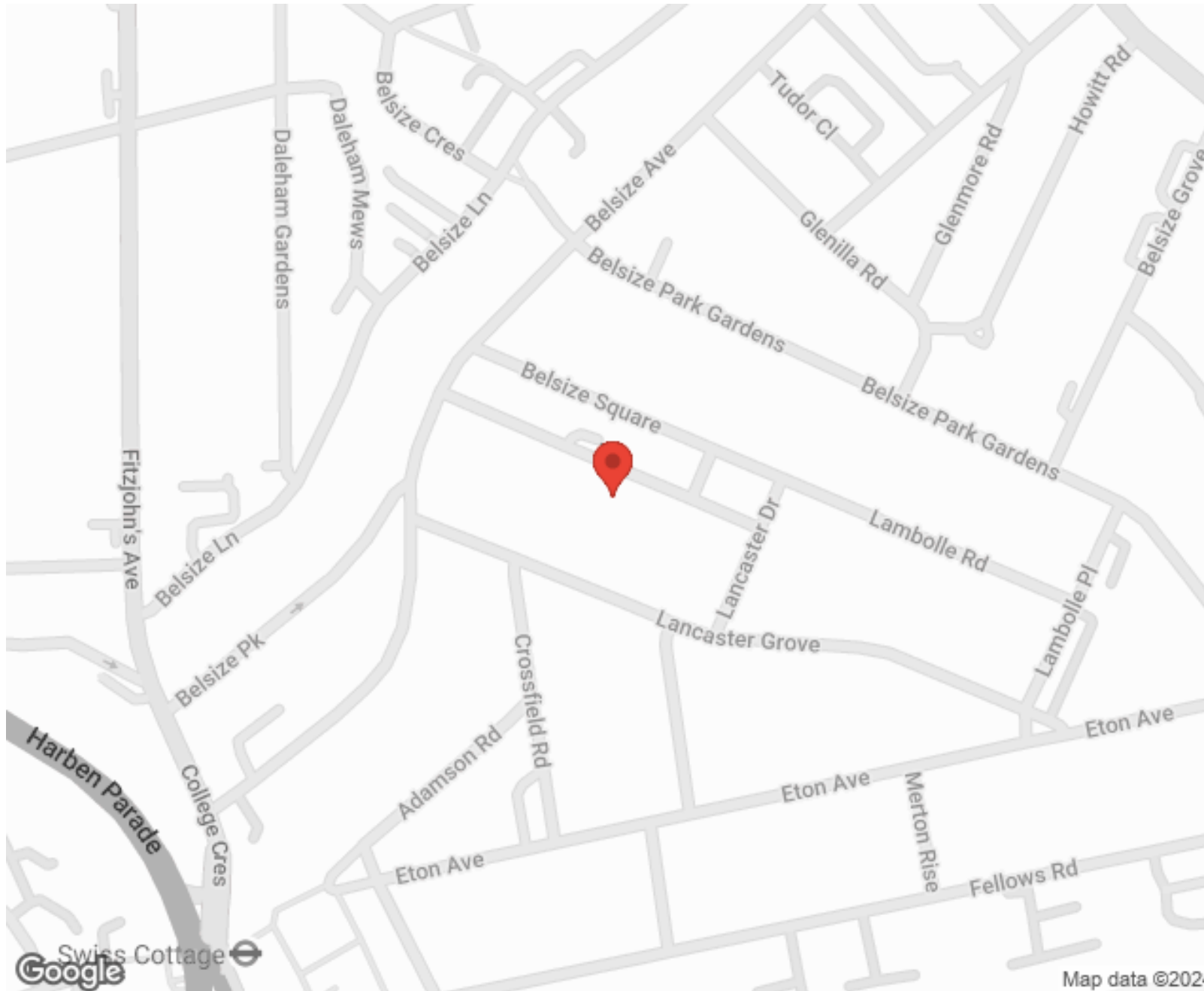
"I used Vita properties to find a flat recently and it was an overall professional, personalised and positive experience. Saira went the extra mile to accommodate to our needs and quick to help us whenever possible."



**MORE INFO, PICTURES,
CONTACT ON
OUR WEBSITE**



"Vita Properties is a very professional agency. My experience with them was incredible and the entire team was very helpful and kind throughout the renting process. I'd highly recommend!"



SCAN FOR MORE
GOOGLE REVIEWS






Google

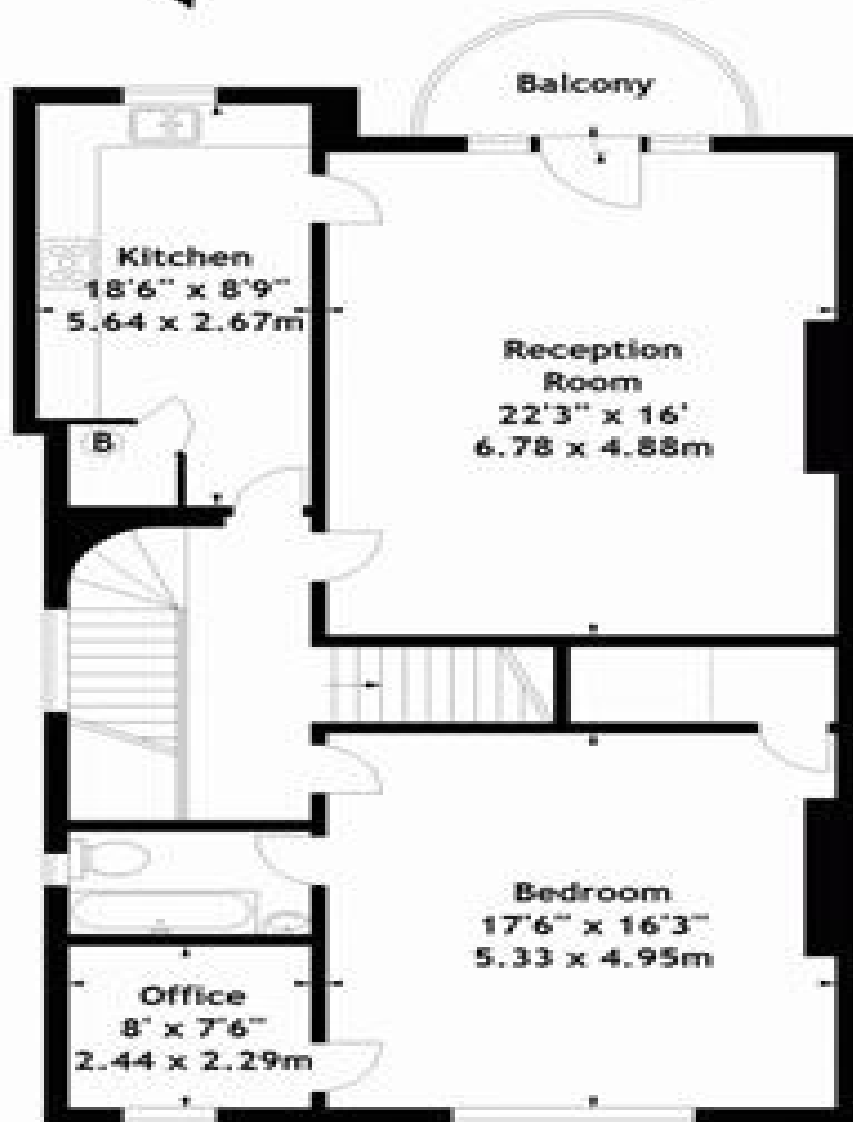


4.9 Stars | 132 Reviews

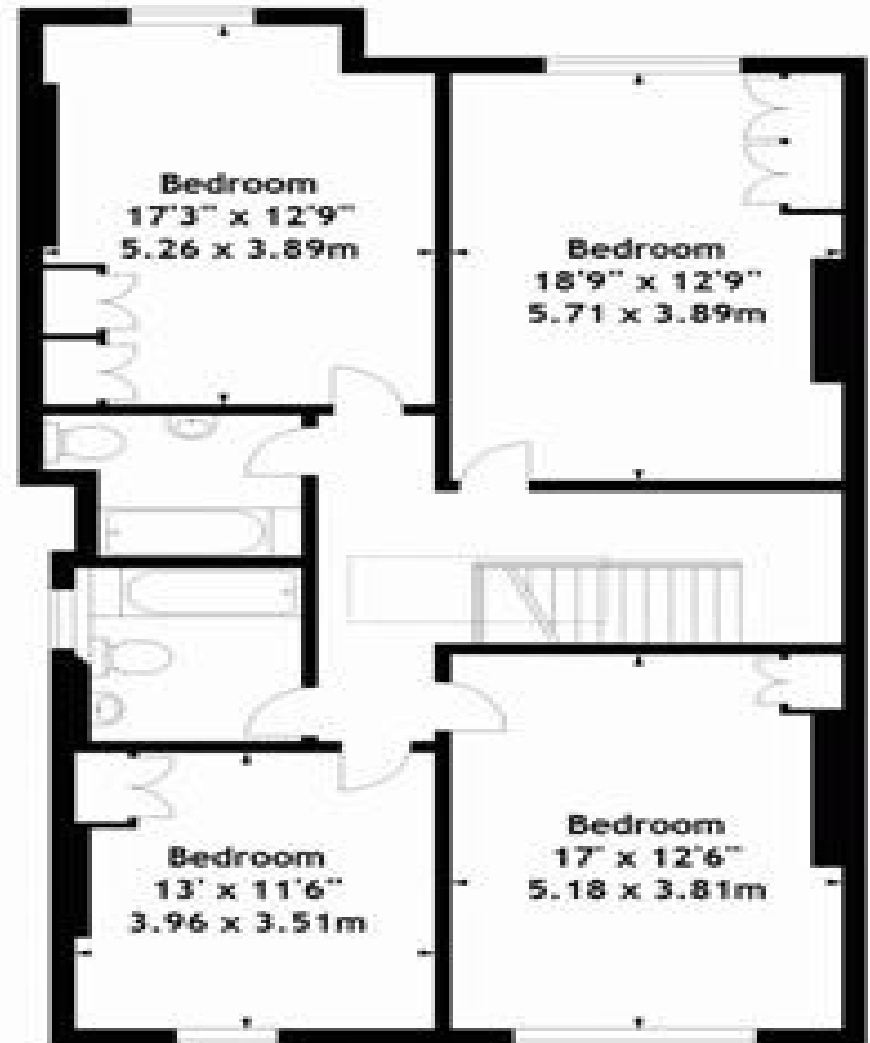
Find us on social media

-  vitaproperties
-  VitaProperties
-  VitaProperties

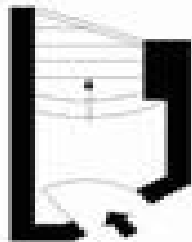
Approx. Gross Internal Area
2257 Sq Ft - 209.68 Sq M



First Floor



Second Floor



Raised
Ground
Floor
Entrance