



Parsifal Road, West Hampstead, London, NW6 .| £950

- Recently Refurbished
- Parking
- Garden
- Semi Detached

- Wooden Floors
- Modern
- Council tax band H - £2657 per annum

"Vita Properties have been tremendously helpful throughout the process of securing/renting my flat. Informative about the property, prompt communication, easy to use dashboard for sharing of information, and pleasant to work with. Highly recommend!"

Located on a beautiful tree lined road just off Fortune Green Road, NW6 is this recently renovated 4 bedroom semi detached house. With open plan living space and modern fittings this house is split over 3 levels and further benefits one off street parking space/patio garden, living room with a separate dining area, a guest WC, 3 bathrooms (two being en suite) & wooden floors. Parsifal Road is only moments to the buzzing West Hampstead high street and a selection of transport links and Hampstead Heath. Unfurnished.

Viewings available through Vita 020 7759 2199



Oliver Kent

✉ [oliver.kent@vitaproperties.uk](mailto:oliver.kent@vitaproperties.uk)  
☎ +4477 7274 0351

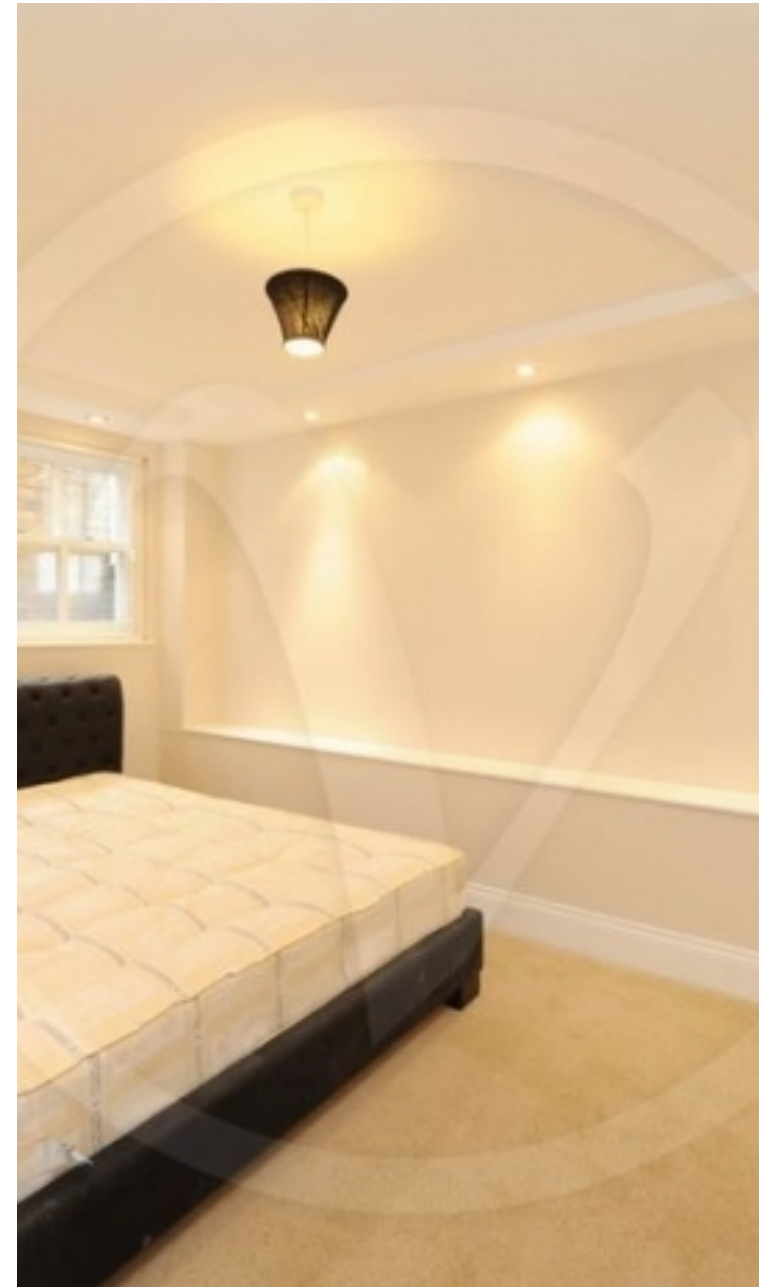


🏠	House
🔑	Available to Let
🛏️	x 4
🚿	x 1
🚽	x 3



"I was very impressed with Vita and their network of buyers. When the sale of my flat fell through (twice) they worked extremely hard to find new buyers in a difficult market - thank you!"

---



"Working with Vita properties has been a smooth experience! No complaints at all. Our letting agent, Diana has been fantastic and very helpful throughout the whole process. I would highly recommend both Vita properties and Diana."

---



"I used Vita properties to find a flat recently and it was an overall professional, personalised and positive experience. Saira went the extra mile to accommodate to our needs and quick to help us whenever possible."

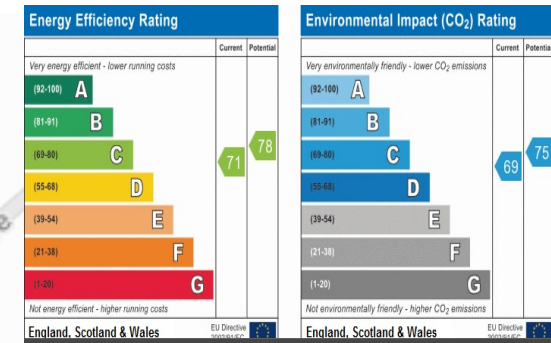
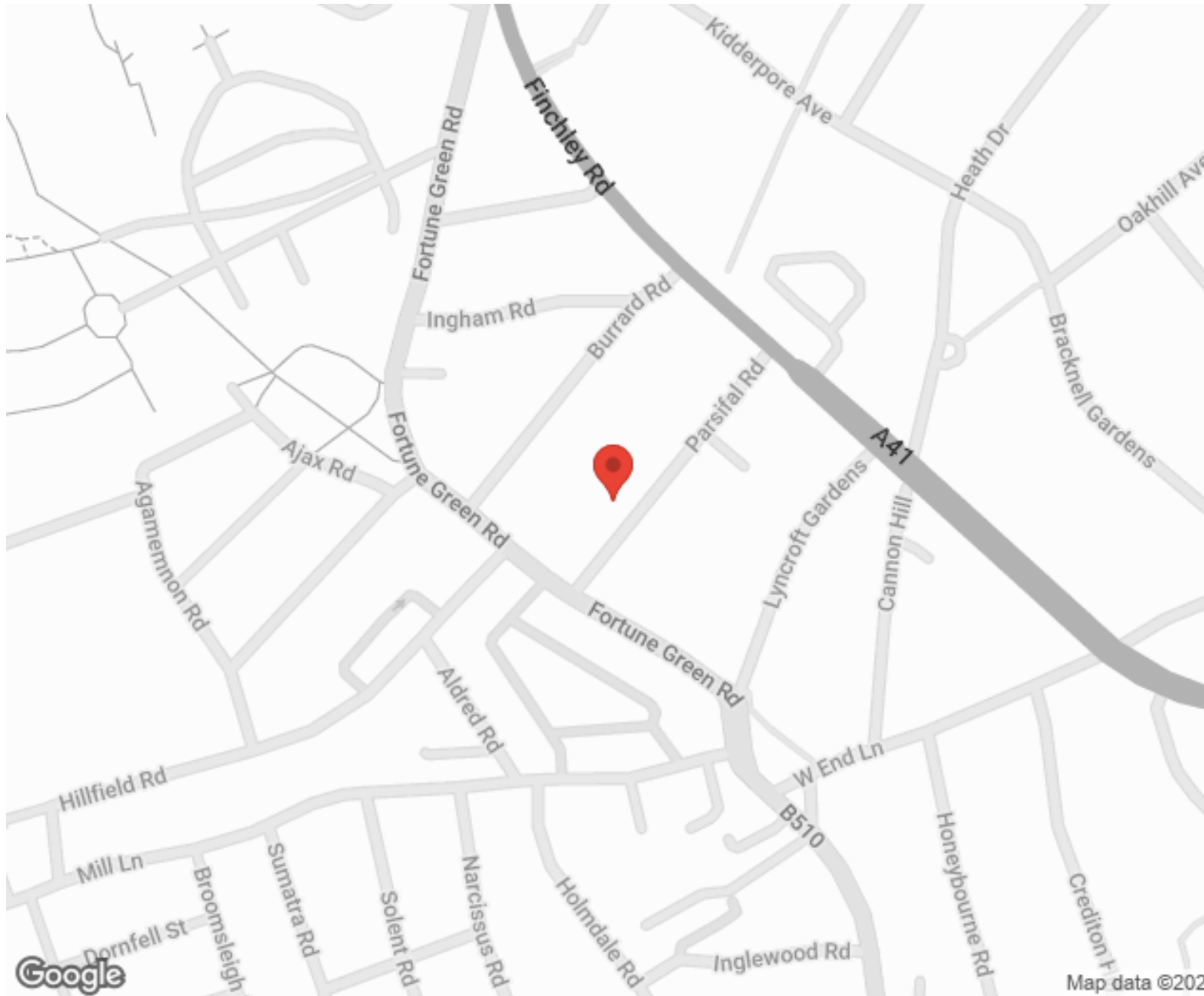
---



**MORE INFO, PICTURES,  
CONTACT ON  
OUR WEBSITE**



"Vita Properties is a very professional agency. My experience with them was incredible and the entire team was very helpful and kind throughout the renting process. I'd highly recommend!"



SCAN FOR MORE GOOGLE REVIEWS

Google  
★★★★★  
4.9 Stars | 132 Reviews

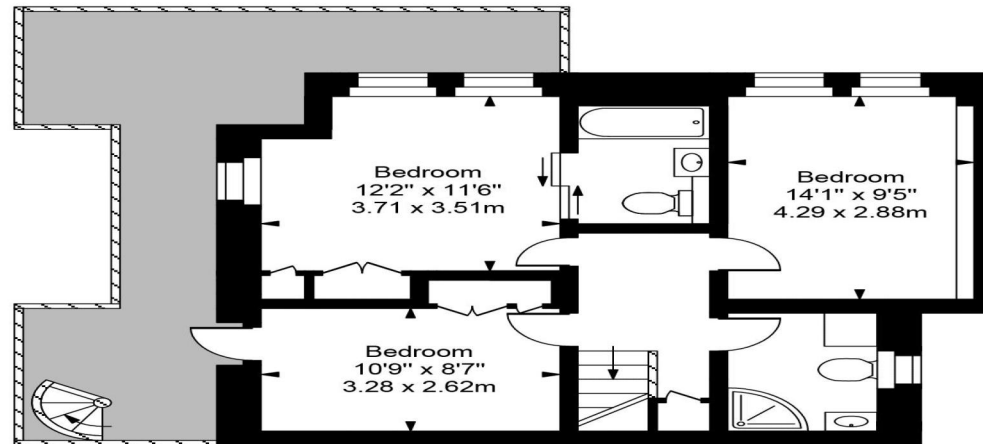
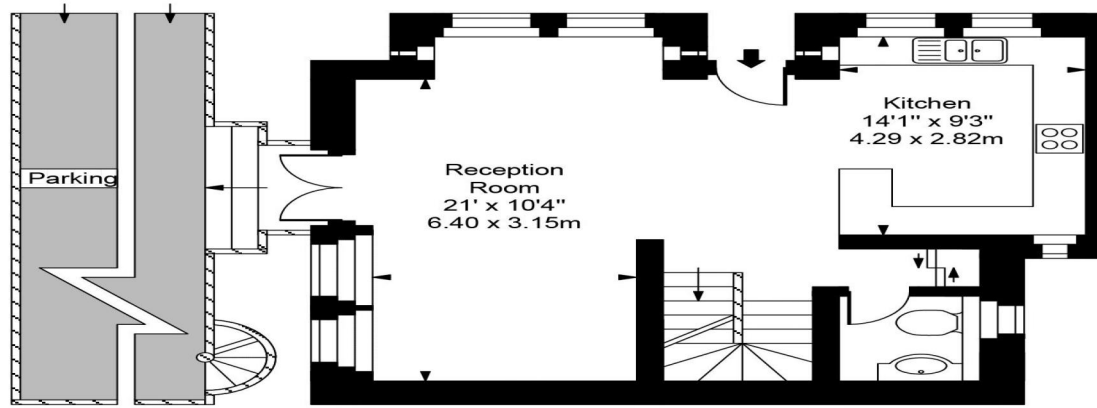
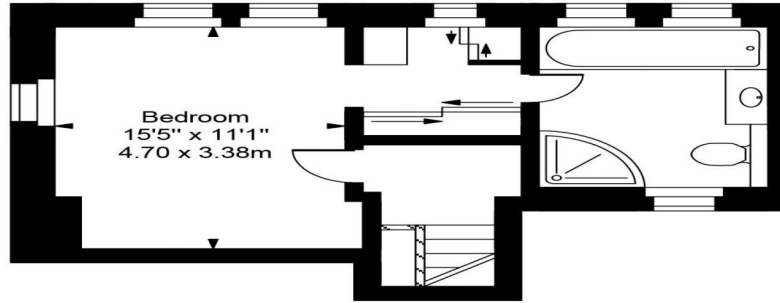
Find us on social media

- vitaproperties
- VitaProperties
- VitaProperties



Map data ©2024

# Parsifal Road



Approx Gross Internal Area **1531 Sq Ft - 142.20 Sq M**

For Illustration Purposes Only - Not To Scale  
Floor plan by [www.creativeplanetlk.com](http://www.creativeplanetlk.com)