



Westbere Road, West Hampstead Borders, London, NW2 .| £400

- Two double bedrooms
- Modern Fitted kitchen
- Fantastic condition
- Tiled bathroom

- Large reception room
- Available immediately
- Brand new carpet and newly decorated

"Vita Properties have been tremendously helpful throughout the process of securing/renting my flat. Informative about the property, prompt communication, easy to use dashboard for sharing of information, and pleasant to work with. Highly recommend!"

Available immediately - An exceptionally, bright and spacious (approx 784 sq ft) two double bedroom 1st floor flat for rent in this period house, situated conveniently for all the local shops, bars, restaurants and transport facilities of Kilburn and Mill lane and a short walk from West Hampsteads tube and shops.

Oliver Kent

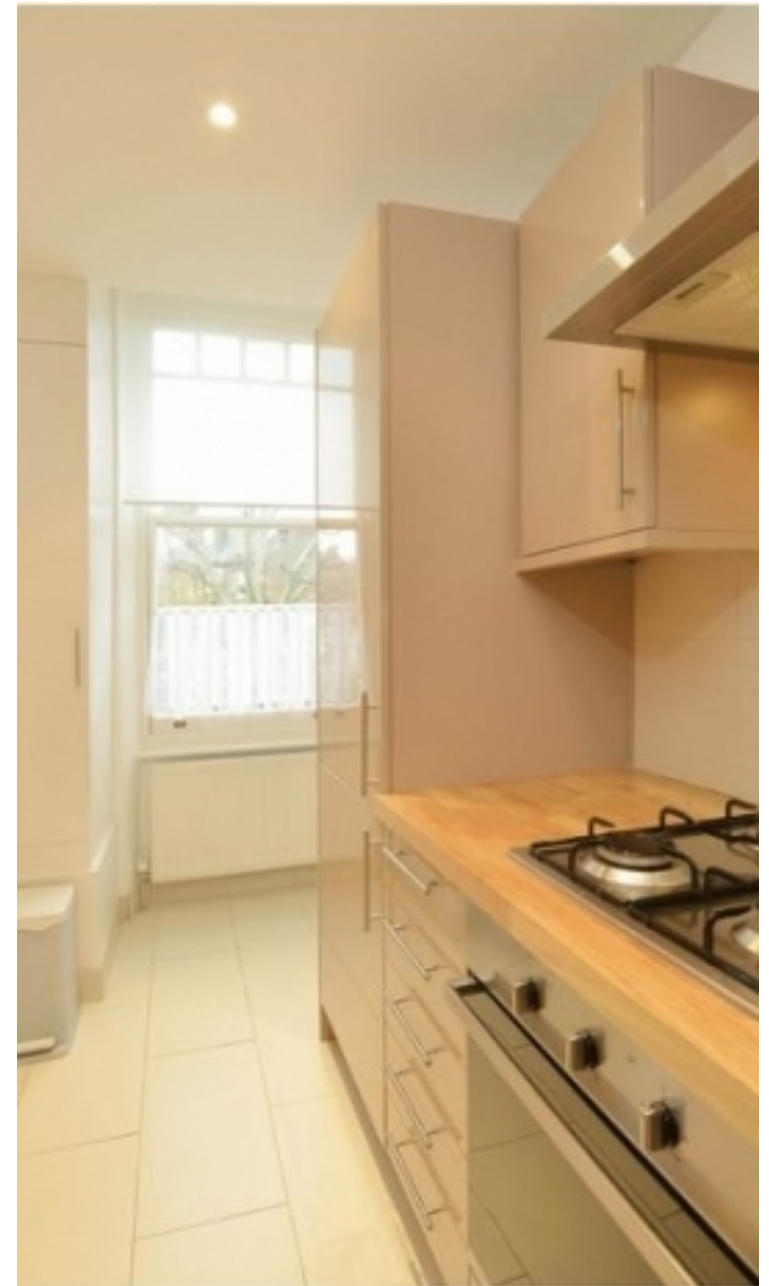
✉ [oliver.kent@vitaproperties.uk](mailto:oliver.kent@vitaproperties.uk)  
☎ +4477 7274 0351

🏠 Flat  
🔑 Available  
to Let  
🛏 x 2  
🛋 x 1  
🚿 x 1



"I was very impressed with Vita and their network of buyers. When the sale of my flat fell through (twice) they worked extremely hard to find new buyers in a difficult market - thank you!"

---



"Working with Vita properties has been a smooth experience! No complaints at all. Our letting agent, Diana has been fantastic and very helpful throughout the whole process. I would highly recommend both Vita properties and Diana."

---



"I used Vita properties to find a flat recently and it was an overall professional, personalised and positive experience. Saira went the extra mile to accommodate to our needs and quick to help us whenever possible."

---




**MORE INFO, PICTURES,  
CONTACT ON  
OUR WEBSITE**


"Vita Properties is a very professional agency. My experience with them was incredible and the entire team was very helpful and kind throughout the renting process. I'd highly recommend!"

---

Find us on social media

 vitaproperties

 VitaProperties

 VitaProperties

