



Aberdare Gardens, South Hampstead, London, NW6 .| £595

- Available 05 April 14
- Furnished
- Modern
- 1 allocated off street parking space
- 2 double bedrooms
- Guest WC
- Council tax - F - £1914 per annum

"Vita Properties have been tremendously helpful throughout the process of securing/renting my flat. Informative about the property, prompt communication, easy to use dashboard for sharing of information, and pleasant to work with. Highly recommend!"

An exceptional two bedroom, two bathroom apartment arranged on the 1st floor of a beautifully maintained conversion in South Hampstead benefiting from off street parking. Presented in excellent condition throughout, the apartment features a bright and spacious 21 ft reception room with a fitted open plan kitchen, two double bedrooms, 2 en suite bathrooms and a guest WC. Aberdare Gardens is conveniently located for access to the shops, restaurants, cafes and transport links at Finchley Road, West Hampstead and Swiss Cottage.

Available 05 April 14 - Furnished



Oliver Kent

✉ oliver.kent@vitaproperties.uk

☎ +4477 7274 0351



🏠	Flat
🔑	Available to Let
🛏️	x 2
🛋️	x 1
🚿	x 2



"I was very impressed with Vita and their network of buyers. When the sale of my flat fell through (twice) they worked extremely hard to find new buyers in a difficult market - thank you!"



"Working with Vita properties has been a smooth experience! No complaints at all. Our letting agent, Diana has been fantastic and very helpful throughout the whole process. I would highly recommend both Vita properties and Diana."



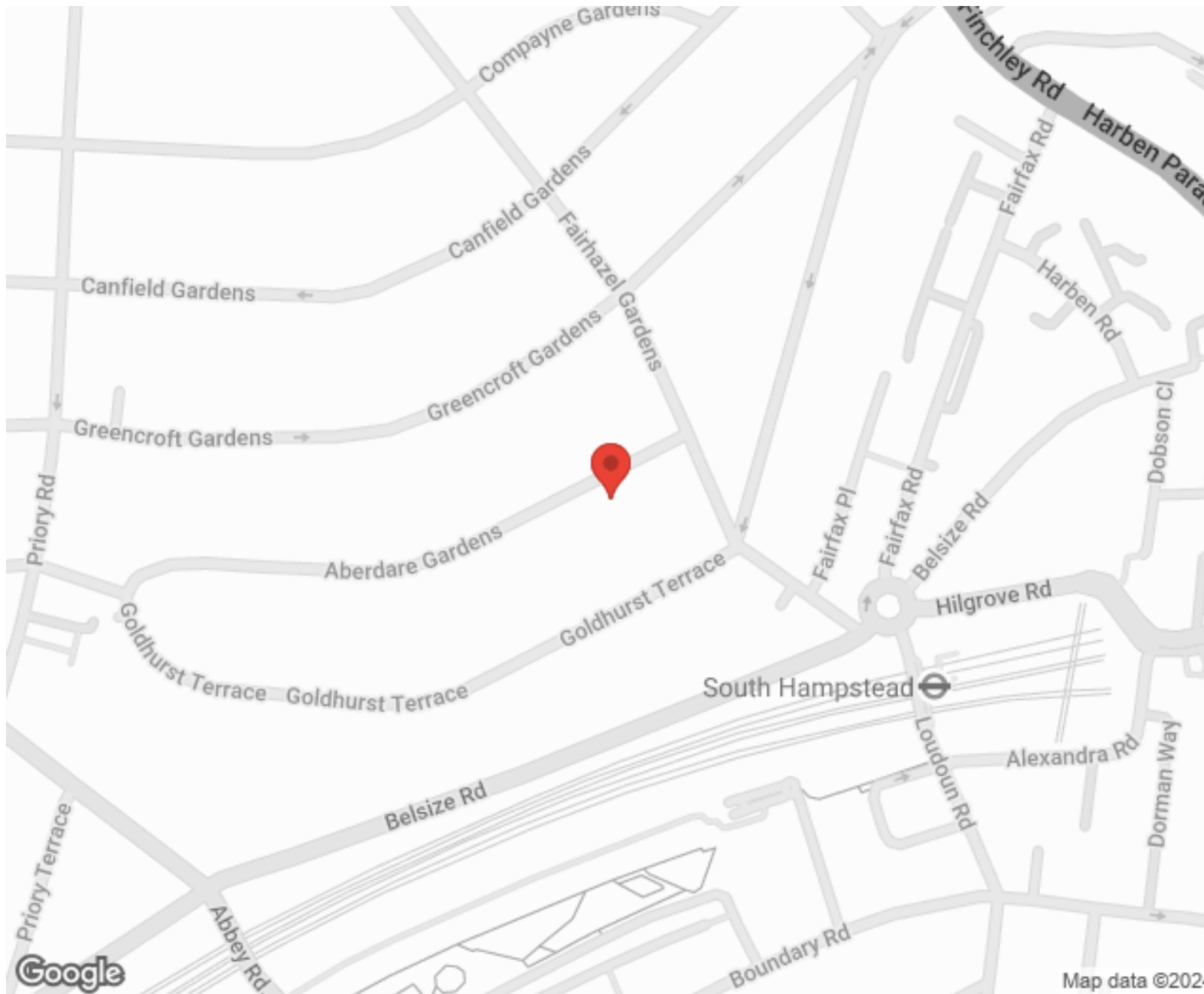
"I used Vita properties to find a flat recently and it was an overall professional, personalised and positive experience. Saira went the extra mile to accommodate to our needs and quick to help us whenever possible."



**MORE INFO, PICTURES,
CONTACT ON
OUR WEBSITE**



"Vita Properties is a very professional agency. My experience with them was incredible and the entire team was very helpful and kind throughout the renting process. I'd highly recommend!"



SCAN FOR MORE
GOOGLE REVIEWS






Google

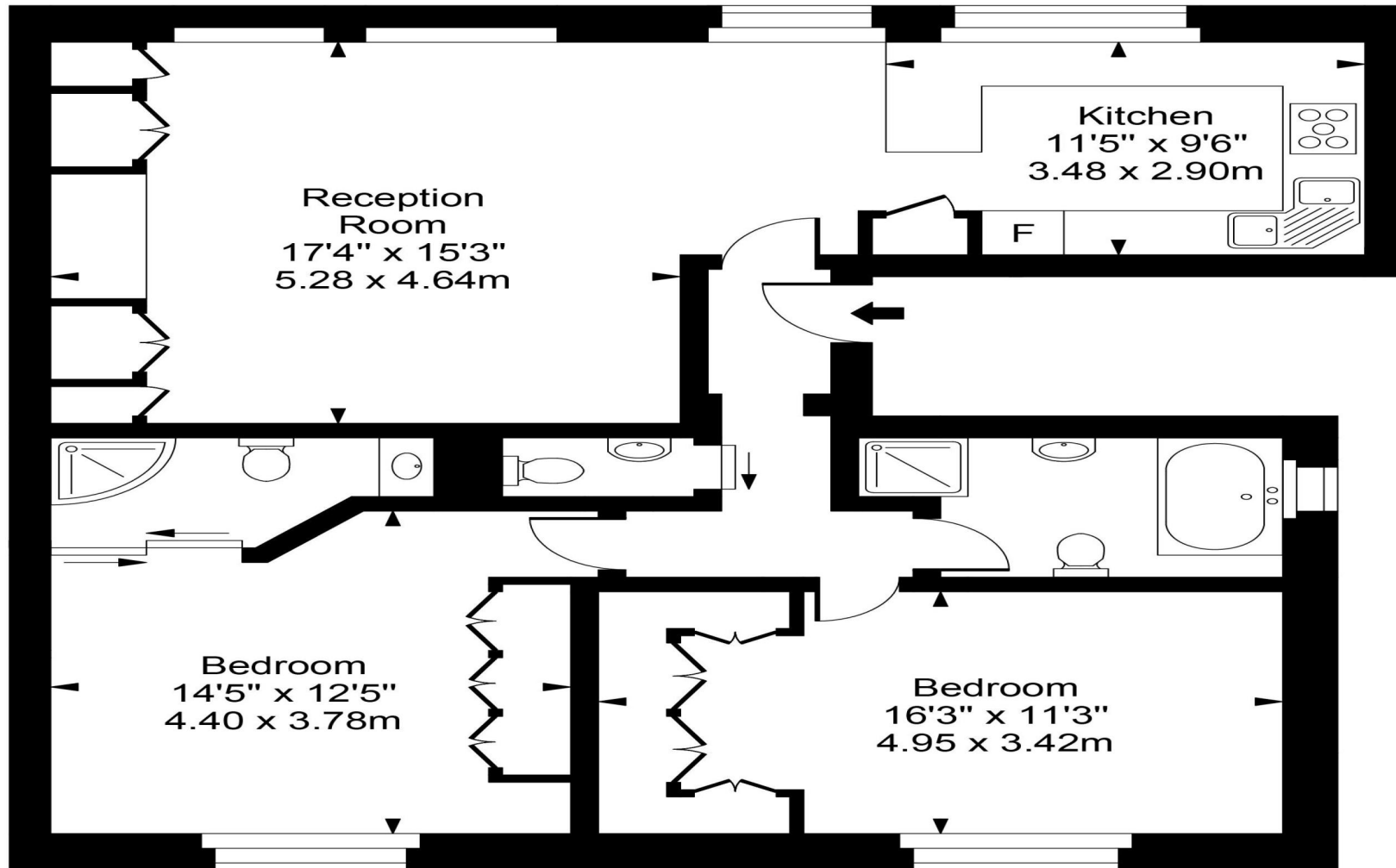
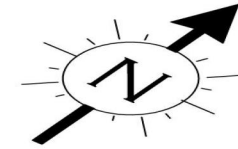


4.9 Stars | 132 Reviews

Find us on social media

-  vitaproperties
-  VitaProperties
-  VitaProperties

Aberdere Gardens



First Floor



Approx Gross Internal Area **976 Sq Ft - 90.69 Sq M**

For Illustration Purposes Only - Not To Scale
Floor plan by www.creativeplanetlk.com