



Aberdare Gardens, South Hapmstead, London, NW6 .| £595

- Perfect for sharers
- Top floor
- Managed
- Modern

- 3 Double bedrooms
- Sought after location
- Council tax - F - £1914 per annum
- Offered Fully Furnished

"Vita Properties have been tremendously helpful throughout the process of securing/renting my flat. Informative about the property, prompt communication, easy to use dashboard for sharing of information, and pleasant to work with. Highly recommend!"

A Top floor 3 double bedroom 2 bathroom (en suite shower) flat in this period converted house on Aberdare Gardens in the heart of the South Hampstead conservation area. Well located near the junction of Fairhazel Gardens with choice of stations Finchley Rd, Swiss Cottage and South Hampstead main line 6 mins from Euston. Excellent accomodation with wood floors, good size reception, kitchen breakfast room. Available 14th May.

Offered Fully Furnished



Oliver Kent

✉ oliver.kent@vitaproperties.uk

☎ +4477 7274 0351



🏠	Flat
🔑	Available to Let
🛏️	x 3
🛋️	x 1
📞	x 2



"I was very impressed with Vita and their network of buyers. When the sale of my flat fell through (twice) they worked extremely hard to find new buyers in a difficult market - thank you!"



"Working with Vita properties has been a smooth experience! No complaints at all. Our letting agent, Diana has been fantastic and very helpful throughout the whole process. I would highly recommend both Vita properties and Diana."



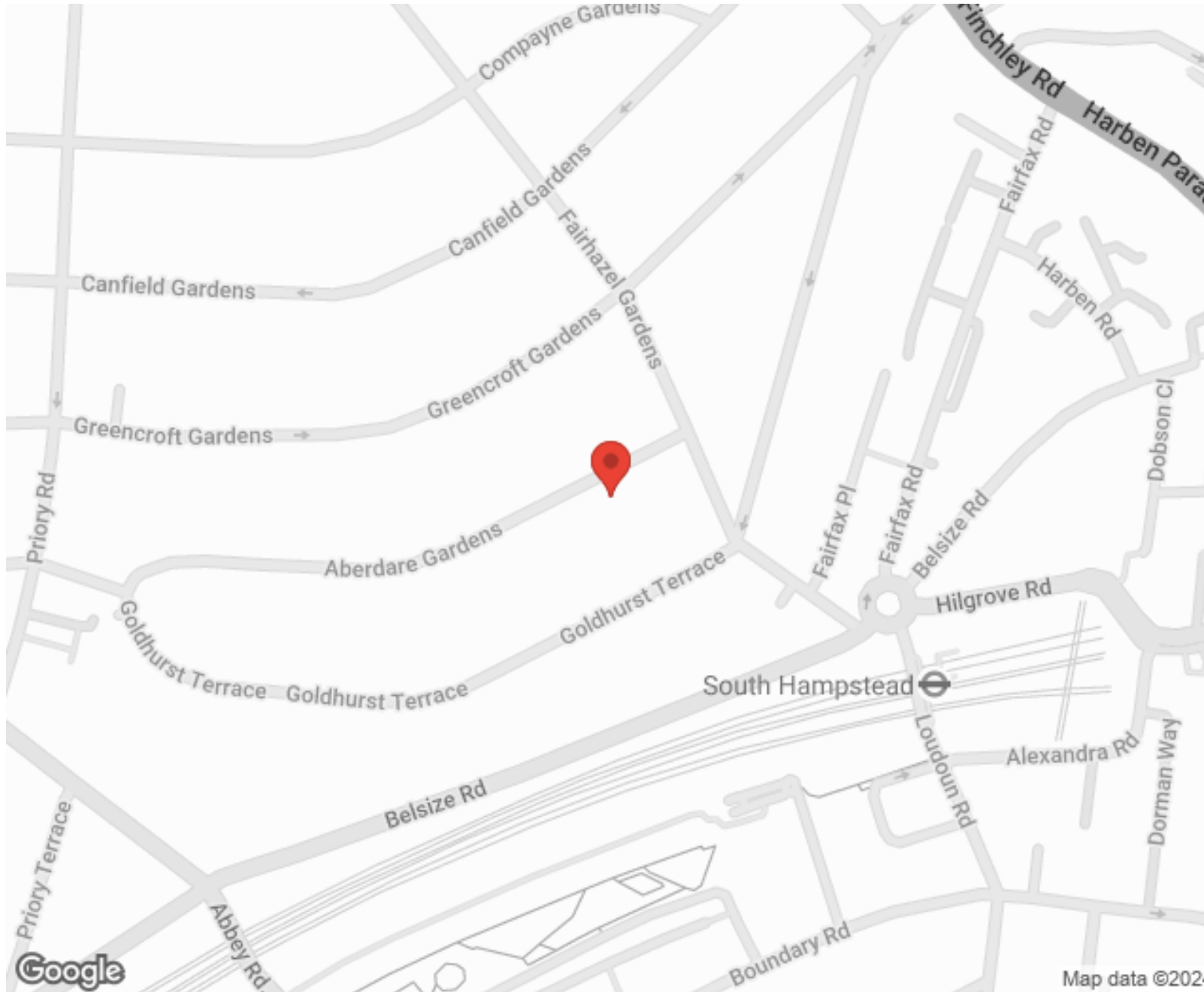
"I used Vita properties to find a flat recently and it was an overall professional, personalised and positive experience. Saira went the extra mile to accommodate to our needs and quick to help us whenever possible."



**MORE INFO, PICTURES,
CONTACT ON
OUR WEBSITE**



"Vita Properties is a very professional agency. My experience with them was incredible and the entire team was very helpful and kind throughout the renting process. I'd highly recommend!"



SCAN FOR MORE
GOOGLE REVIEWS






Google

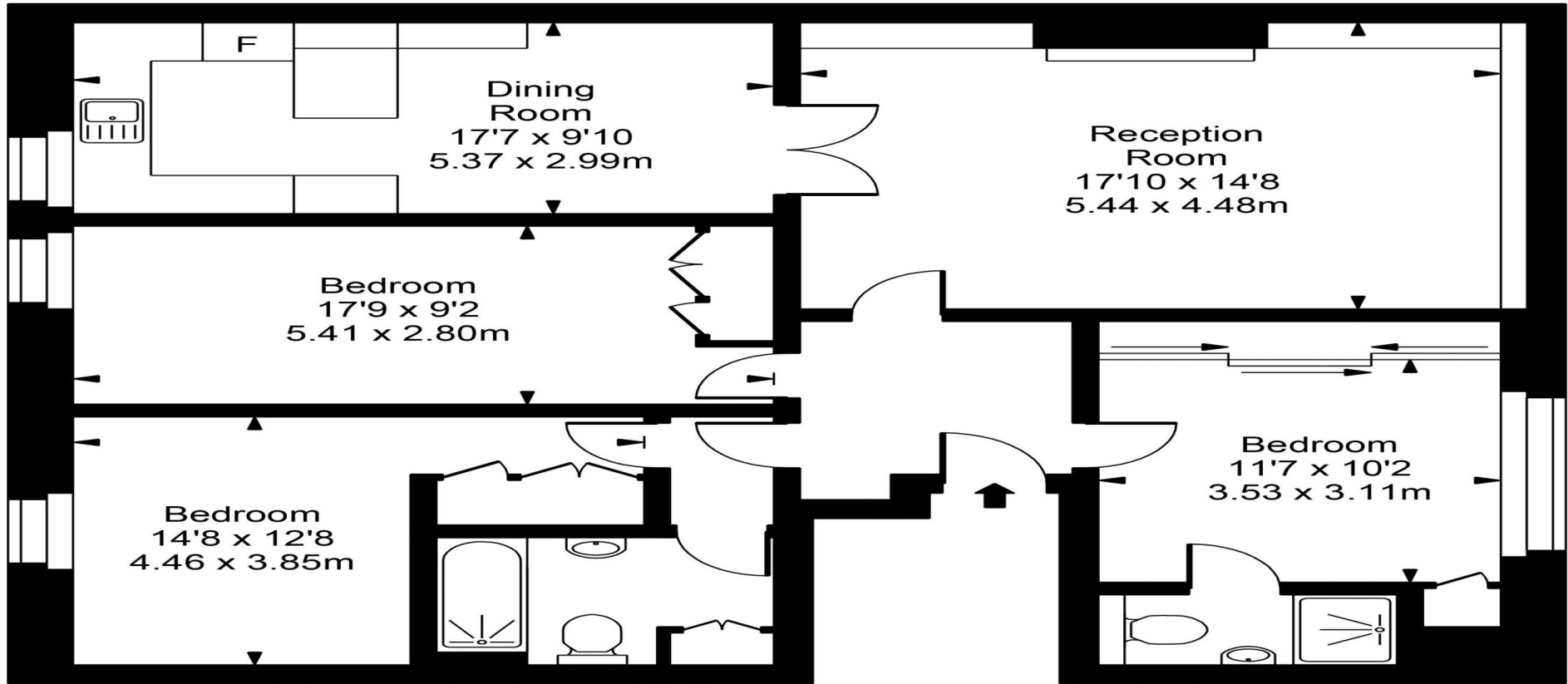
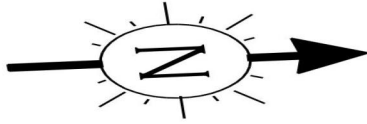


4.9 Stars | 132 Reviews

Find us on social media

-  vitaproperties
-  VitaProperties
-  VitaProperties

Aberdare Gardens



Top Floor



Approx Gross Internal Area **1114 Sq Ft - 103.49 Sq M**

For Illustration Purposes Only - Not To Scale
Floor plan by www.bestangle.co.uk