



Howitt Road, Belsize Park, London, NW3 .| £595

- Private garden
- Refurbished to a high standard
- Located in the heart of Belsize Park
- Wooden floors

- Very spacious
- Council tax - E - £1619 per annum

"Vita Properties have been tremendously helpful throughout the process of securing/renting my flat. Informative about the property, prompt communication, easy to use dashboard for sharing of information, and pleasant to work with. Highly recommend!"

Available immediately is this spacious (892 sq ft approx) one bedroom garden flat which has been recently refurbished to a very high standard. The flat comprises a semi open plan fully equipped kitchen. A beautiful marble tiled bathroom with large walk in shower unit. It also boasts Walnut wood flooring and a private garden with access from the living room and a wall mounted LCD TV in lounge. This stunning flat is available on either a furnished or unfurnished basis.



Oliver Kent

✉ [oliver.kent@vitaproperties.uk](mailto:oliver.kent@vitaproperties.uk)

☎ +4477 7274 0351

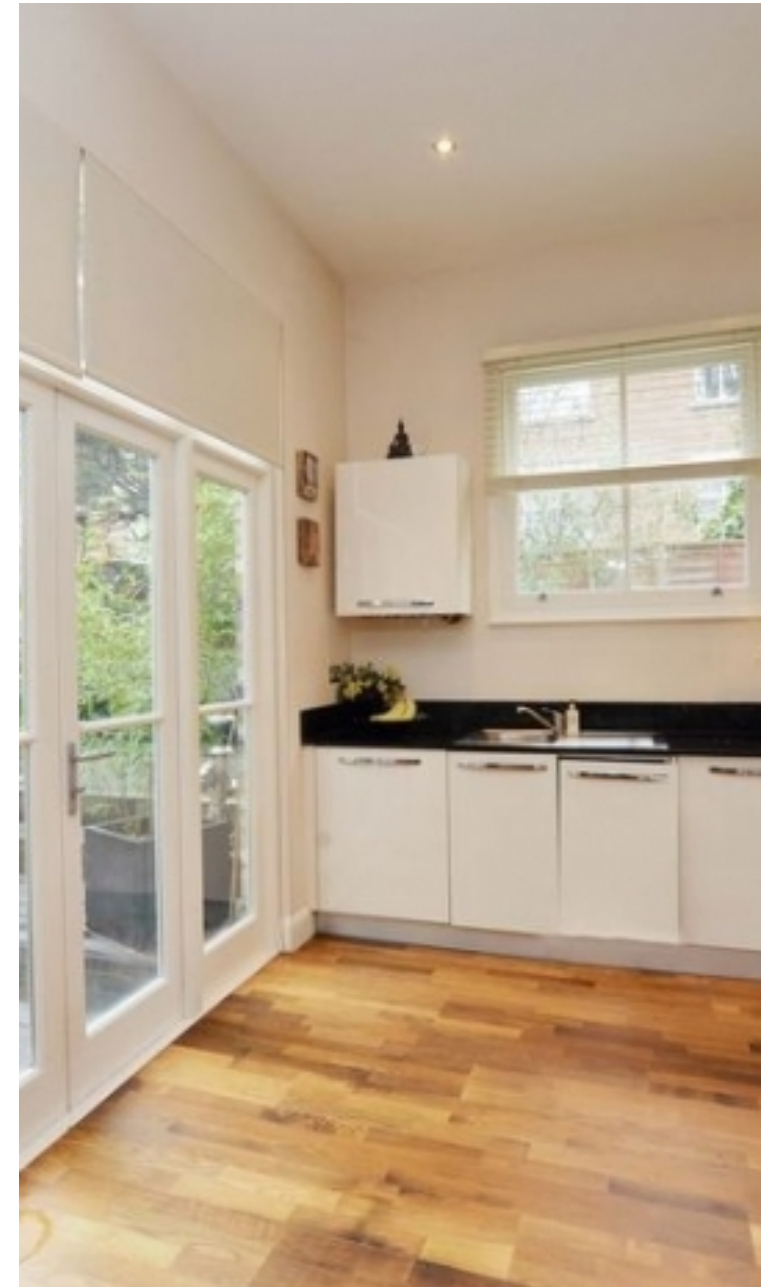


🏠	Flat
🔑	Available to Let
🛏️	x 1
🚿	x 1
📺	x 1



"I was very impressed with Vita and their network of buyers. When the sale of my flat fell through (twice) they worked extremely hard to find new buyers in a difficult market - thank you!"

---



"Working with Vita properties has been a smooth experience! No complaints at all. Our letting agent, Diana has been fantastic and very helpful throughout the whole process. I would highly recommend both Vita properties and Diana."

---





"I used Vita properties to find a flat recently and it was an overall professional, personalised and positive experience. Saira went the extra mile to accommodate to our needs and quick to help us whenever possible."

---

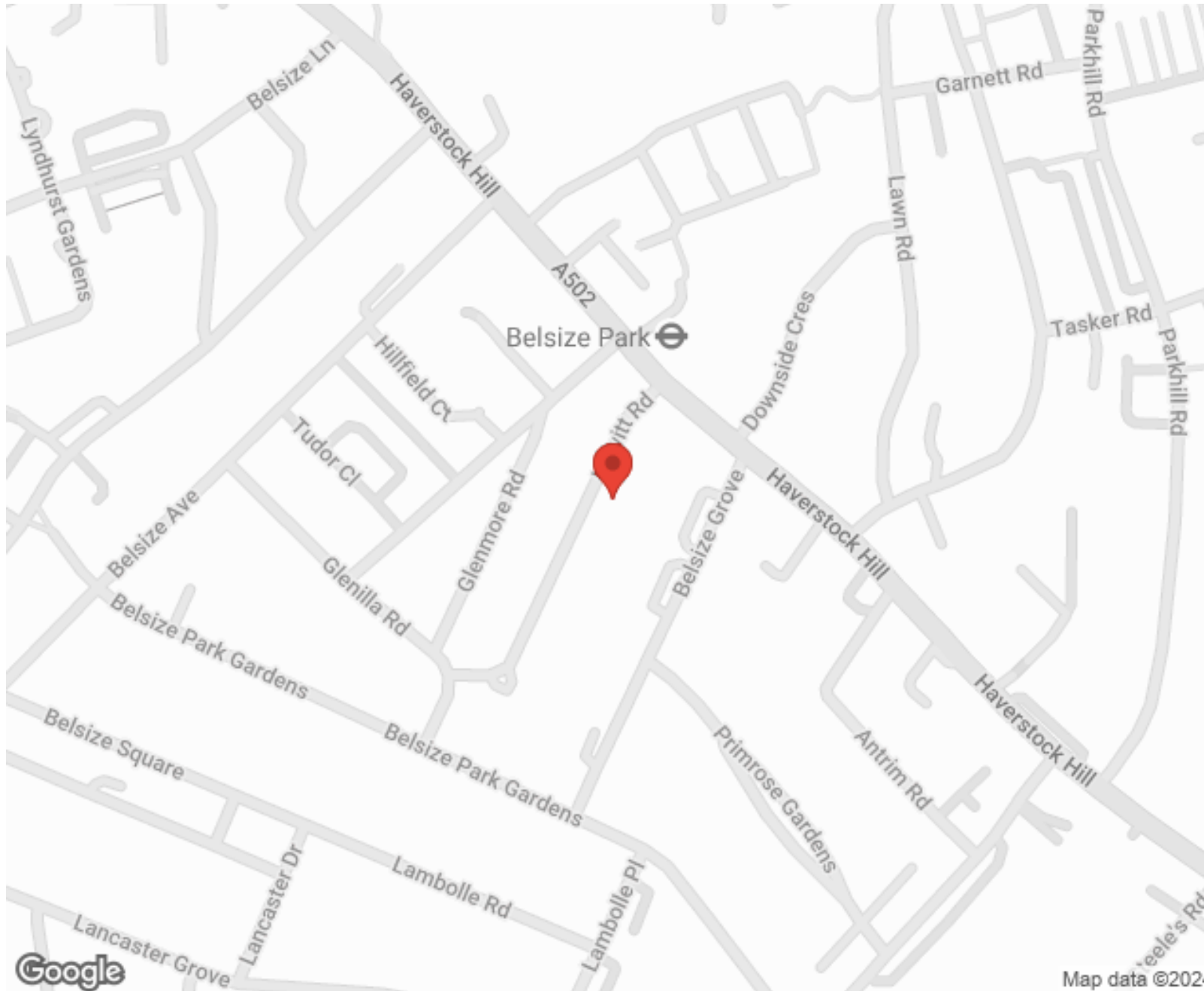


**MORE INFO, PICTURES,  
CONTACT ON  
OUR WEBSITE**



"Vita Properties is a very professional agency. My experience with them was incredible and the entire team was very helpful and kind throughout the renting process. I'd highly recommend!"

---



SCAN FOR MORE  
GOOGLE REVIEWS






Google

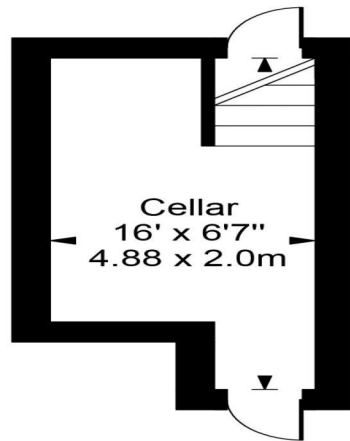
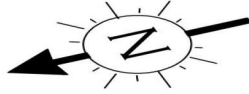


4.9 Stars | 132 Reviews

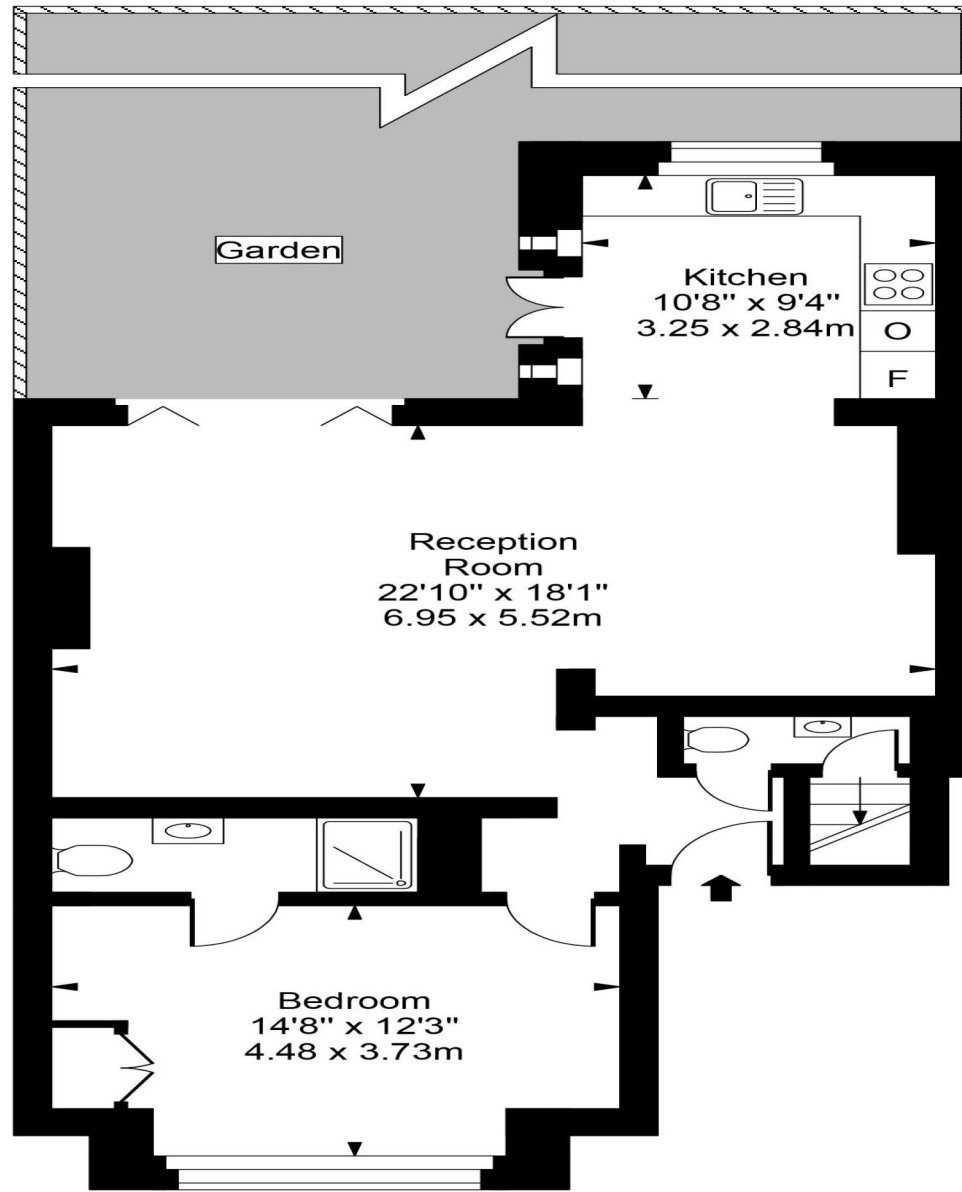
Find us on social media

-  vitaproperties
-  VitaProperties
-  VitaProperties

Howitt Road



Lower Ground Floor  
Entrance



Ground Floor



Approx Gross Internal Area **892 Sq Ft - 82.84 Sq M**

For Illustration Purposes Only - Not To Scale  
Floor plan by [www.creativeplanetlk.com](http://www.creativeplanetlk.com)